

Home report

4951 Warrior Drive, Cherokee Hills, Salem, Roanoke County,
Virginia, United States, 24153



Total Area: 1992 sq. ft
Below Ground: 0 sq. ft, Floor 2: 882 sq. ft, Floor 3: 1110 sq. ft
Excluded: Basement 839 sq. ft, Garage 569 sq. ft, Balcony 118 sq. ft, Porch 33 sq. ft,
Walls: 240 sq. ft

Property summary

 **3** Floors

 **4** Bedrooms

 **2** Bathrooms

Home report

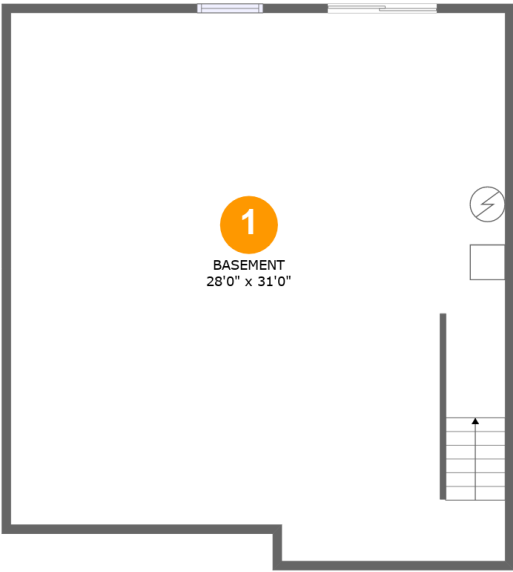
4951 Warrior Drive, Cherokee Hills, Salem, Roanoke County,
Virginia, United States, 24153

 **1**
Half baths

 **1**
Garages

Home report

4951 Warrior Drive, Cherokee Hills, Salem, Roanoke County,
Virginia, United States, 24153



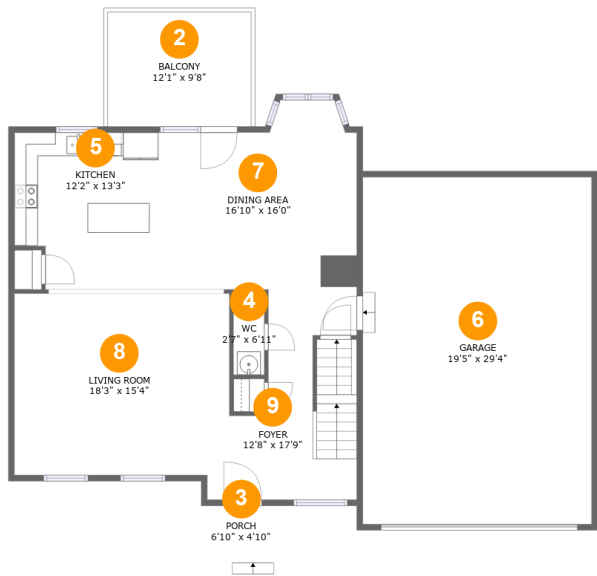
Room dimensions

Floor 1 Below ground Total:0sqft Excluded: 839sqft

#		Max Dimensions	sqft	Included
1	Basement	28'0" x 31'0"	839 sq. ft	No

Home report

4951 Warrior Drive, Cherokee Hills, Salem, Roanoke County,
Virginia, United States, 24153



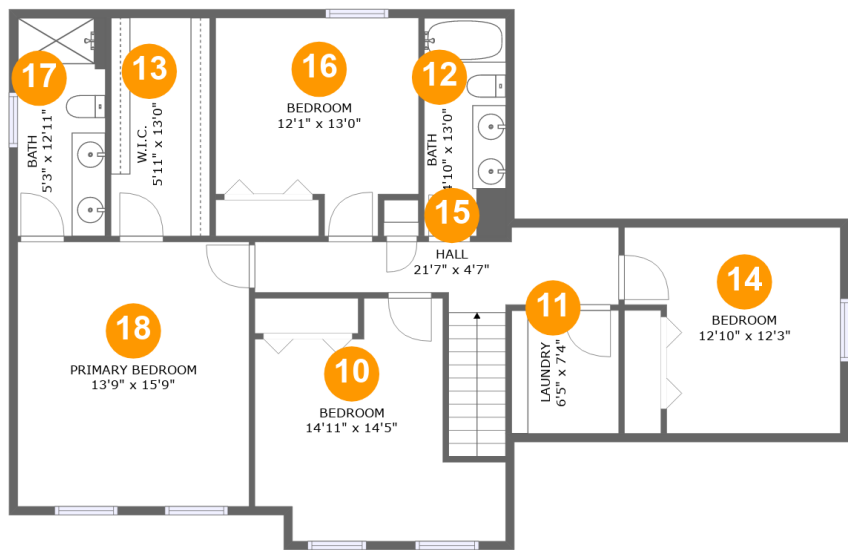
Room dimensions

Floor 2 Total:882sqft Excluded: 720sqft

#		Max Dimensions	sqft	Included
2	Balcony	12'1" x 9'8"	118 sq. ft	No
3	Porch	6'10" x 4'10"	33 sq. ft	No
4	WC	2'7" x 6'11"	18 sq. ft	Yes
5	Kitchen	12'2" x 13'3"	152 sq. ft	Yes
6	Garage	19'5" x 29'4"	569 sq. ft	No
7	Dining Area	16'10" x 16'0"	239 sq. ft	Yes
8	Living Room	18'3" x 15'4"	275 sq. ft	Yes
9	Foyer	12'8" x 17'9"	162 sq. ft	Yes

Home report

4951 Warrior Drive, Cherokee Hills, Salem, Roanoke County,
Virginia, United States, 24153



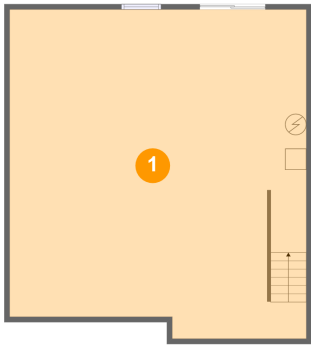
Room dimensions

Floor 3 Total:1110sqft Excluded: 0sqft

#		Max Dimensions	sqft	Included
10	Bedroom	14'11" x 14'5"	158 sq. ft	Yes
11	Laundry	6'5" x 7'4"	47 sq. ft	Yes
12	Bath	4'10" x 13'0"	63 sq. ft	Yes
13	W.I.C.	5'11" x 13'0"	76 sq. ft	Yes
14	Bedroom	12'10" x 12'3"	138 sq. ft	Yes
15	Hall	21'7" x 4'7"	108 sq. ft	Yes
16	Bedroom	12'1" x 13'0"	134 sq. ft	Yes
17	Bath	5'3" x 12'11"	68 sq. ft	Yes
18	Primary Bedroom	13'9" x 15'9"	216 sq. ft	Yes

4951 Warrior Drive, Cherokee Hills, Salem, Roanoke County,
Virginia, United States, 24153

1 Floor 1 - Basement



Max Dimensions: 28'0" x 31'0"
Calculated Area: 839 sq. ft
Included: No

Heated: Yes
Finished: No
Enclosed: Yes
Contiguous: Yes
Permitted: Yes
Wet space: No
Addition: No
Conversion: No

2 Floor 2 - Balcony

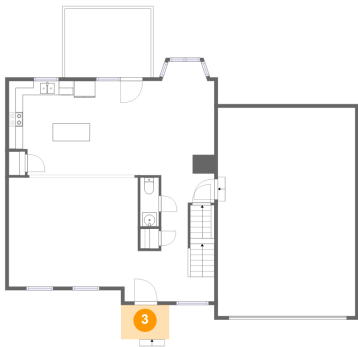


Max Dimensions: 12'1" x 9'8"
Calculated Area: 118 sq. ft
Included: No

Heated: No
Finished: Yes
Enclosed: No
Contiguous: Yes
Permitted: Yes
Wet space: No
Addition: No
Conversion: No

4951 Warrior Drive, Cherokee Hills, Salem, Roanoke County,
Virginia, United States, 24153

3 Floor 2 - Porch



Max Dimensions: 6'10" x 4'10"
Calculated Area: 33 sq. ft
Included: No

Heated: No
Finished: Yes
Enclosed: No
Contiguous: Yes
Permitted: Yes
Wet space: No
Addition: No
Conversion: No

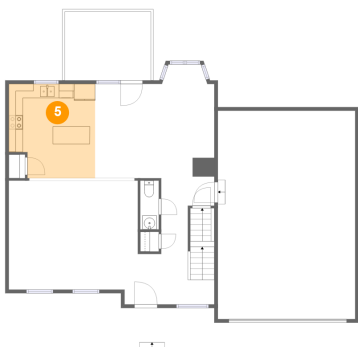
4 Floor 2 - WC



Max Dimensions: 2'7" x 6'11"
Calculated Area: 18 sq. ft
Included: Yes

Heated: Yes
Finished: Yes
Enclosed: Yes
Contiguous: Yes
Permitted: Yes
Wet space: Yes
Addition: No
Conversion: No

5 Floor 2 - Kitchen

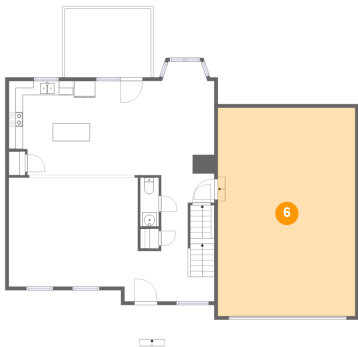


Max Dimensions: 12'2" x 13'3"
Calculated Area: 152 sq. ft
Included: Yes

Heated: Yes
Finished: Yes
Enclosed: Yes
Contiguous: Yes
Permitted: Yes
Wet space: No
Addition: No
Conversion: No

4951 Warrior Drive, Cherokee Hills, Salem, Roanoke County,
Virginia, United States, 24153

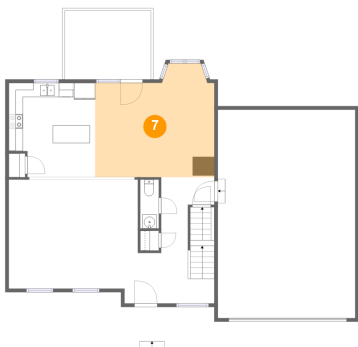
6 Floor 2 - Garage



Max Dimensions: 19'5" x 29'4"
Calculated Area: 569 sq. ft
Included: No

Heated: No
Finished: No
Enclosed: Yes
Contiguous: Yes
Permitted: Yes
Wet space: No
Addition: No
Conversion: No

7 Floor 2 - Dining Area



Max Dimensions: 16'10" x 16'0"
Calculated Area: 239 sq. ft
Included: Yes

Heated: Yes
Finished: Yes
Enclosed: Yes
Contiguous: Yes
Permitted: Yes
Wet space: No
Addition: No
Conversion: No

8 Floor 2 - Living Room



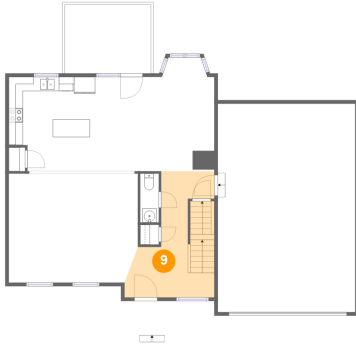
Max Dimensions: 18'3" x 15'4"
Calculated Area: 275 sq. ft
Included: Yes

Heated: Yes
Finished: Yes
Enclosed: Yes
Contiguous: Yes
Permitted: Yes
Wet space: No
Addition: No
Conversion: No

Home report

4951 Warrior Drive, Cherokee Hills, Salem, Roanoke County,
Virginia, United States, 24153

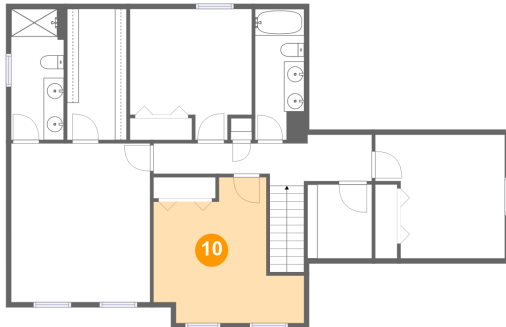
9 Floor 2 - Foyer



Max Dimensions: 12'8" x 17'9"
Calculated Area: 162 sq. ft
Included: Yes

Heated: Yes
Finished: Yes
Enclosed: Yes
Contiguous: Yes
Permitted: Yes
Wet space: No
Addition: No
Conversion: No

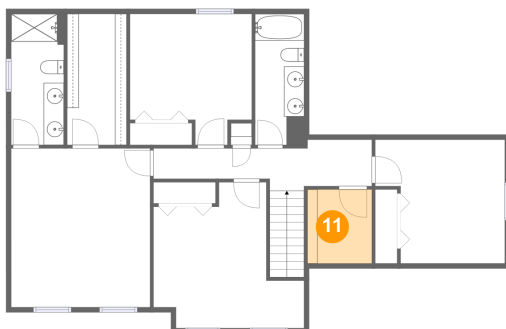
10 Floor 3 - Bedroom



Max Dimensions: 14'11" x 14'5"
Calculated Area: 158 sq. ft
Included: Yes

Heated: Yes
Finished: Yes
Enclosed: Yes
Contiguous: Yes
Permitted: Yes
Wet space: No
Addition: No
Conversion: No

11 Floor 3 - Laundry



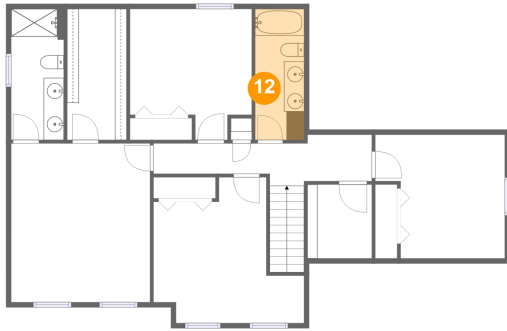
Max Dimensions: 6'5" x 7'4"
Calculated Area: 47 sq. ft
Included: Yes

Heated: Yes
Finished: Yes
Enclosed: Yes
Contiguous: Yes
Permitted: Yes
Wet space: No
Addition: No
Conversion: No

Home report

4951 Warrior Drive, Cherokee Hills, Salem, Roanoke County,
Virginia, United States, 24153

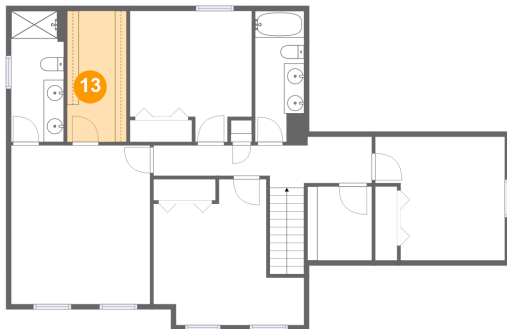
12 Floor 3 - Bath



Max Dimensions: 4'10" x 13'0"
Calculated Area: 63 sq. ft
Included: Yes

Heated: Yes
Finished: Yes
Enclosed: Yes
Contiguous: Yes
Permitted: Yes
Wet space: Yes
Addition: No
Conversion: No

13 Floor 3 - W.I.C.



Max Dimensions: 5'11" x 13'0"
Calculated Area: 76 sq. ft
Included: Yes

Heated: Yes
Finished: Yes
Enclosed: Yes
Contiguous: Yes
Permitted: Yes
Wet space: No
Addition: No
Conversion: No

14 Floor 3 - Bedroom

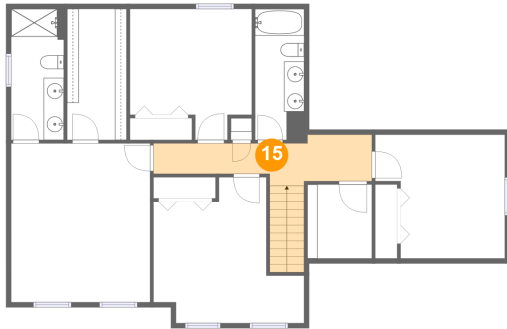


Max Dimensions: 12'10" x 12'3"
Calculated Area: 138 sq. ft
Included: Yes

Heated: Yes
Finished: Yes
Enclosed: Yes
Contiguous: Yes
Permitted: Yes
Wet space: No
Addition: No
Conversion: No

4951 Warrior Drive, Cherokee Hills, Salem, Roanoke County,
Virginia, United States, 24153

15 Floor 3 - Hall



Max Dimensions: 21'7" x 4'7"
Calculated Area: 108 sq. ft
Included: Yes

Heated: Yes
Finished: Yes
Enclosed: Yes
Contiguous: Yes
Permitted: Yes
Wet space: No
Addition: No
Conversion: No

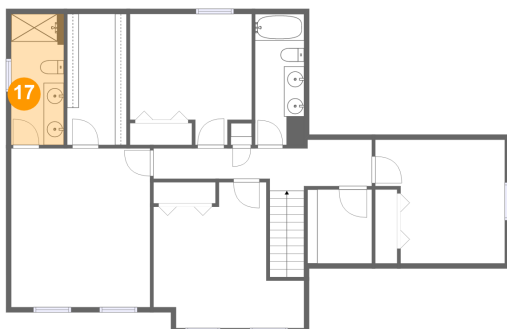
16 Floor 3 - Bedroom



Max Dimensions: 12'1" x 13'0"
Calculated Area: 134 sq. ft
Included: Yes

Heated: Yes
Finished: Yes
Enclosed: Yes
Contiguous: Yes
Permitted: Yes
Wet space: No
Addition: No
Conversion: No

17 Floor 3 - Bath

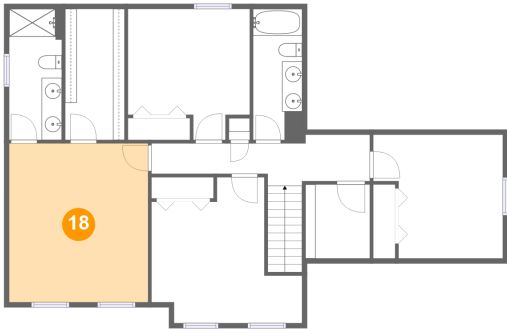


Max Dimensions: 5'3" x 12'11"
Calculated Area: 68 sq. ft
Included: Yes

Heated: Yes
Finished: Yes
Enclosed: Yes
Contiguous: Yes
Permitted: Yes
Wet space: Yes
Addition: No
Conversion: No

4951 Warrior Drive, Cherokee Hills, Salem, Roanoke County,
Virginia, United States, 24153

18 Floor 3 - Primary Bedroom



Max Dimensions: 13'9" x 15'9"
Calculated Area: 216 sq. ft
Included: Yes

Heated: Yes
Finished: Yes
Enclosed: Yes
Contiguous: Yes
Permitted: Yes
Wet space: No
Addition: No
Conversion: No