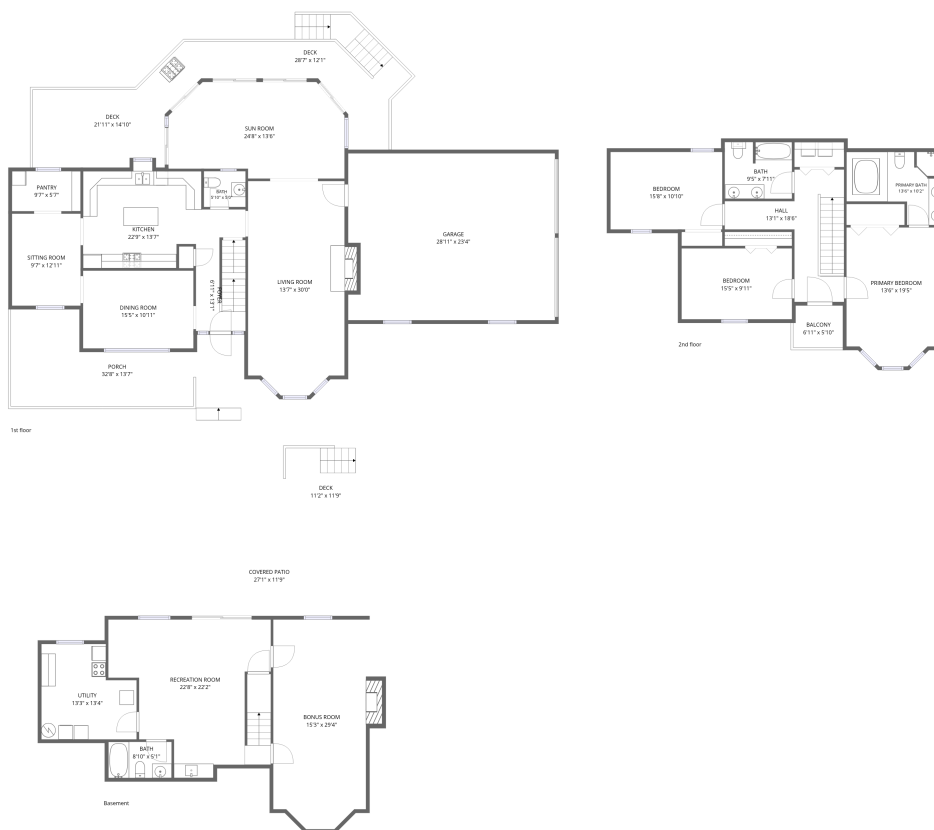


Home data report

419 Willowood Drive, Vinton, Bedford County, Virginia, United States, 24179



Total Area: 3304 sq. ft

Basement: 829 sq. ft, 1st Floor: 1436 sq. ft, 2nd Floor: 1039 sq. ft

Excluded: Utility 156 sq. ft, Covered patio 318 sq. ft, Deck 616 sq. ft, Fireplace 31 sq. ft, Garage 663 sq. ft, Porch 321 sq. ft, Embedded window 5 sq. ft, Balcony 40 sq. ft, Walls: 276 sq. ft

Property summary



Home data report

419 Willowood Drive, Vinton, Bedford County, Virginia, United States, 24179



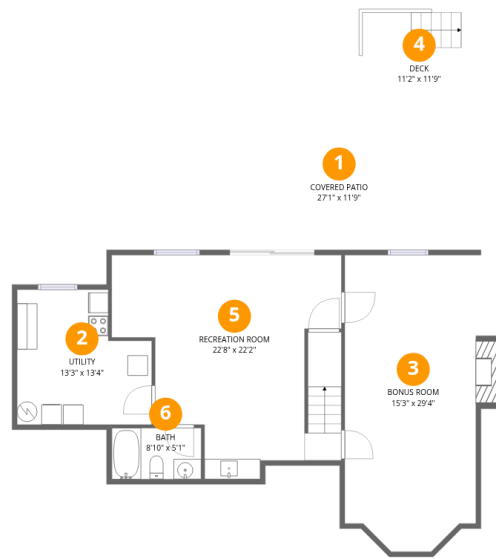
1
Half baths



1
Garages

Home data report

419 Willowood Drive, Vinton, Bedford County, Virginia, United States, 24179



Room dimensions

Floor 1 Below grade

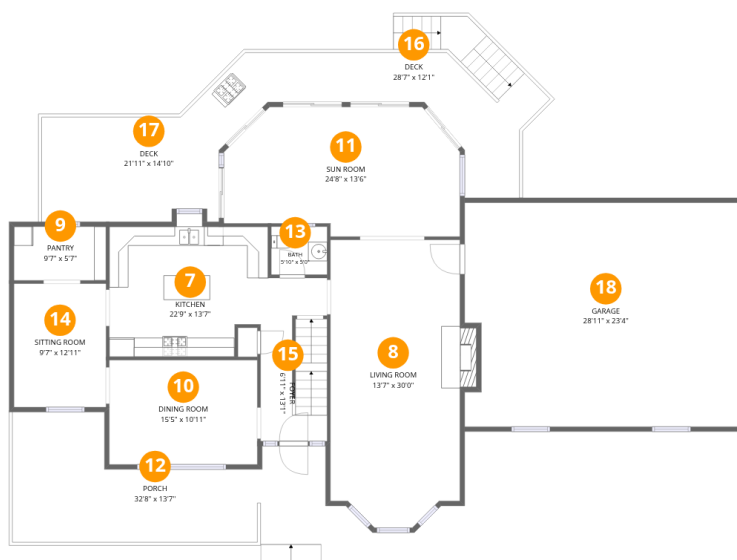
Total:829sqft

Excluded: 624sqft

#		Dimensions	sqft	Counted as living area
1	Covered Patio	27'1" x 11'9"	318 sq. ft	No
2	Utility	13'3" x 13'4"	156 sq. ft	No
3	Bonus Room	15'3" x 29'4"	377 sq. ft	Yes
4	Deck	11'2" x 11'9"	132 sq. ft	No
5	Recreation Room	22'8" x 22'2"	398 sq. ft	Yes
6	Bath	8'10" x 5'1"	45 sq. ft	Yes

Home data report

419 Willowood Drive, Vinton, Bedford County, Virginia, United States, 24179



Room dimensions

Floor 2

Total:1436sqft

Excluded: 1486sqft

#		Dimensions	sqft	Counted as living area
7	Kitchen	22'9" x 13'7"	237 sq. ft	Yes
8	Living Room	13'7" x 30'0"	397 sq. ft	Yes
9	Pantry	9'7" x 5'7"	54 sq. ft	Yes
10	Dining Room	15'5" x 10'11"	168 sq. ft	Yes
11	Sun Room	24'8" x 13'6"	297 sq. ft	Yes
12	Porch	32'8" x 13'7"	321 sq. ft	No
13	Bath	5'10" x 5'0"	29 sq. ft	Yes
14	Sitting Room	9'7" x 12'11"	124 sq. ft	Yes
15	Foyer	6'11" x 13'1"	87 sq. ft	Yes
16	Deck	28'7" x 12'1"	244 sq. ft	No
17	Deck	21'11" x 14'10"	245 sq. ft	No

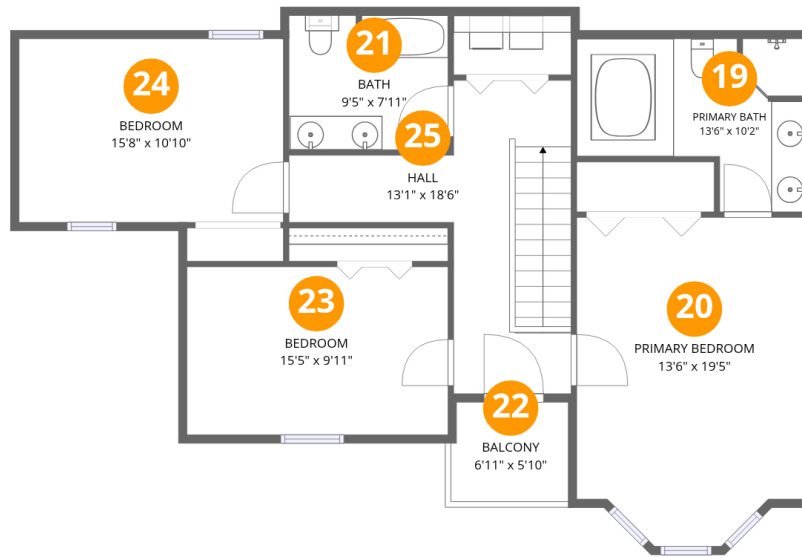
Home data report

419 Willowood Drive, Vinton, Bedford County, Virginia, United States, 24179

#		Dimensions	sqft	Counted as living area
18	Garage	28'11" x 23'4"	663 sq. ft	No

Home data report

419 Willowood Drive, Vinton, Bedford County, Virginia, United States, 24179



Room dimensions

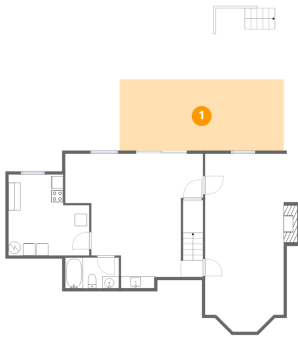
Floor 3

Total:1039sqft

Excluded: 40sqft

#		Dimensions	sqft	Counted as living area
19	Primary Bath	13'6" x 10'2"	109 sq. ft	Yes
20	Primary Bedroom	13'6" x 19'5"	244 sq. ft	Yes
21	Bath	9'5" x 7'11"	74 sq. ft	Yes
22	Balcony	6'11" x 5'10"	40 sq. ft	No
23	Bedroom	15'5" x 9'11"	153 sq. ft	Yes
24	Bedroom	15'8" x 10'10"	170 sq. ft	Yes
25	Hall	13'1" x 18'6"	167 sq. ft	Yes

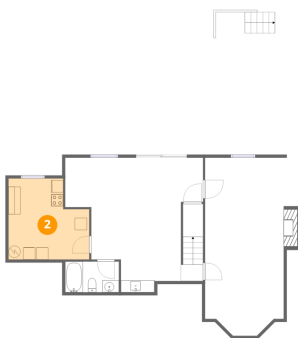
1 Floor 1 - Covered Patio



Dimensions: 27'1" x 11'9"
Area: 318 sq. ft
Counted as living area: No

Heated: No
Finished: No
Enclosed: No
Contiguous: Yes
Permitted: Yes
Wet space: No
Addition: No
Conversion: No

2 Floor 1 - Utility



Dimensions: 13'3" x 13'4"
Area: 156 sq. ft
Counted as living area: No

Heated: Yes
Finished: No
Enclosed: Yes
Contiguous: Yes
Permitted: Yes
Wet space: No
Addition: No
Conversion: No

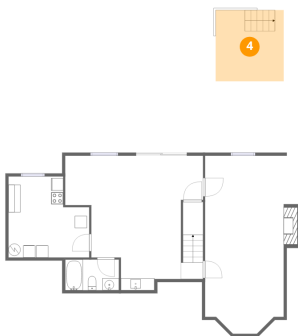
3 Floor 1 - Bonus Room



Dimensions: 15'3" x 29'4"
Area: 377 sq. ft
Counted as living area: Yes

Heated: Yes
Finished: Yes
Enclosed: Yes
Contiguous: Yes
Permitted: Yes
Wet space: No
Addition: No
Conversion: No

4 Floor 1 - Deck



Dimensions: 11'2" x 11'9"
Area: 132 sq. ft
Counted as living area: No

Heated: No
Finished: No
Enclosed: No
Contiguous: Yes
Permitted: Yes
Wet space: No
Addition: No
Conversion: No

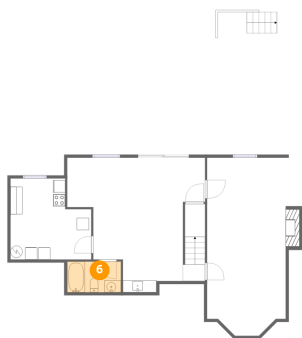
5 Floor 1 - Recreation Room



Dimensions: 22'8" x 22'2"
Area: 398 sq. ft
Counted as living area: Yes

Heated: Yes
Finished: Yes
Enclosed: Yes
Contiguous: Yes
Permitted: Yes
Wet space: No
Addition: No
Conversion: No

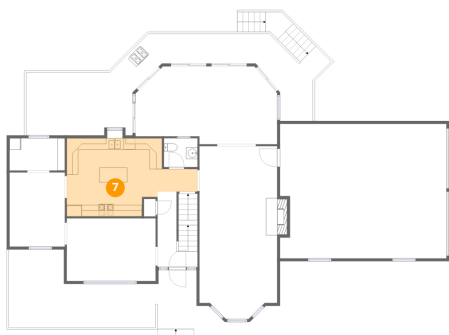
6 Floor 1 - Bath



Dimensions: 8'10" x 5'1"
Area: 45 sq. ft
Counted as living area: Yes

Heated: Yes
Finished: Yes
Enclosed: Yes
Contiguous: Yes
Permitted: Yes
Wet space: Yes
Addition: No
Conversion: No

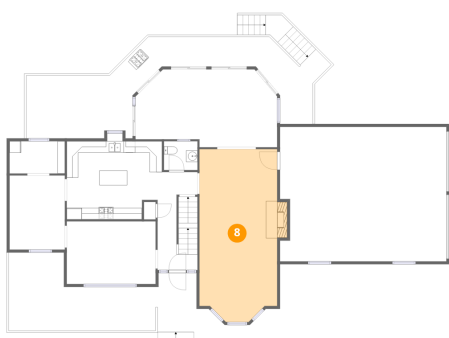
7 Floor 2 - Kitchen



Dimensions: 22'9" x 13'7"
Area: 237 sq. ft
Counted as living area: Yes

Heated: Yes
Finished: Yes
Enclosed: Yes
Contiguous: Yes
Permitted: Yes
Wet space: No
Addition: No
Conversion: No

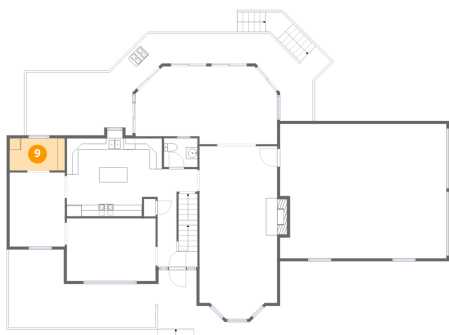
8 Floor 2 - Living Room



Dimensions: 13'7" x 30'0"
Area: 397 sq. ft
Counted as living area: Yes

Heated: Yes
Finished: Yes
Enclosed: Yes
Contiguous: Yes
Permitted: Yes
Wet space: No
Addition: No
Conversion: No

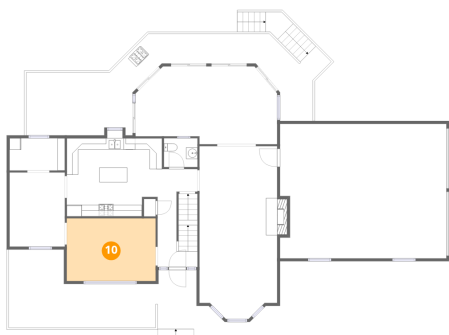
9 Floor 2 - Pantry



Dimensions: 9'7" x 5'7"
Area: 54 sq. ft
Counted as living area: Yes

Heated: Yes
Finished: Yes
Enclosed: Yes
Contiguous: Yes
Permitted: Yes
Wet space: No
Addition: No
Conversion: No

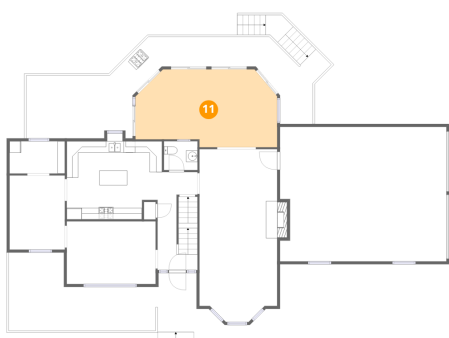
10 Floor 2 - Dining Room



Dimensions: 15'5" x 10'11"
Area: 168 sq. ft
Counted as living area: Yes

Heated: Yes
Finished: Yes
Enclosed: Yes
Contiguous: Yes
Permitted: Yes
Wet space: No
Addition: No
Conversion: No

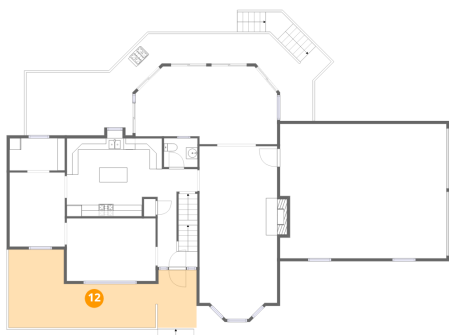
11 Floor 2 - Sun Room



Dimensions: 24'8" x 13'6"
Area: 297 sq. ft
Counted as living area: Yes

Heated: Yes
Finished: Yes
Enclosed: Yes
Contiguous: Yes
Permitted: Yes
Wet space: No
Addition: No
Conversion: No

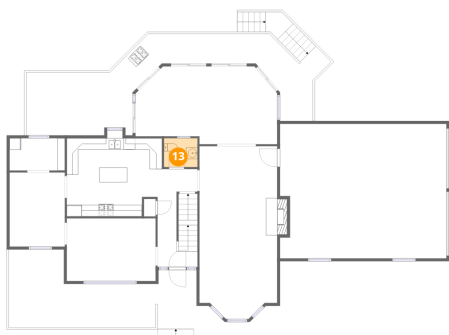
12 Floor 2 - Porch



Dimensions: 32'8" x 13'7"
Area: 321 sq. ft
Counted as living area: No

Heated: No
Finished: No
Enclosed: No
Contiguous: Yes
Permitted: Yes
Wet space: No
Addition: No
Conversion: No

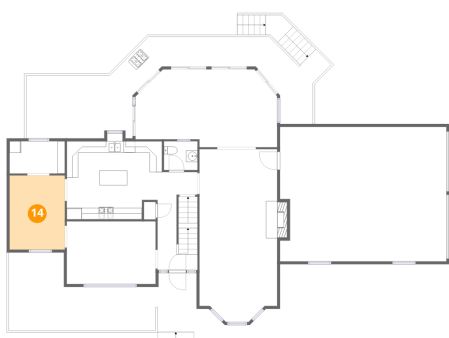
13 Floor 2 - Bath



Dimensions: 5'10" x 5'0"
Area: 29 sq. ft
Counted as living area: Yes

Heated: Yes
Finished: Yes
Enclosed: Yes
Contiguous: Yes
Permitted: Yes
Wet space: Yes
Addition: No
Conversion: No

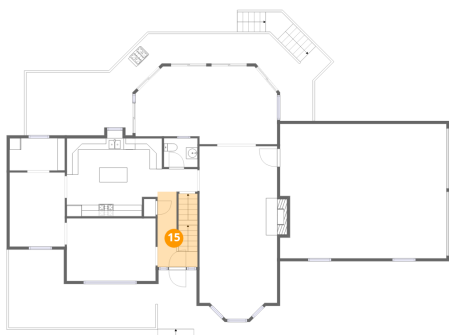
14 Floor 2 - Sitting Room



Dimensions: 9'7" x 12'11"
Area: 124 sq. ft
Counted as living area: Yes

Heated: Yes
Finished: Yes
Enclosed: Yes
Contiguous: Yes
Permitted: Yes
Wet space: No
Addition: No
Conversion: No

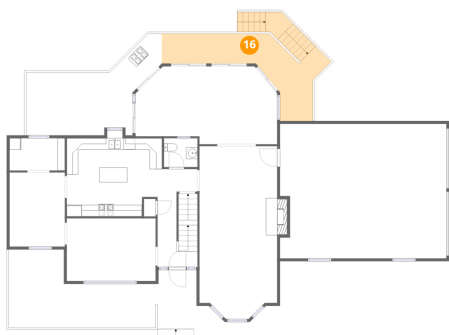
15 Floor 2 - Foyer



Dimensions: 6'11" x 13'1"
Area: 87 sq. ft
Counted as living area: Yes

Heated: Yes
Finished: Yes
Enclosed: Yes
Contiguous: Yes
Permitted: Yes
Wet space: No
Addition: No
Conversion: No

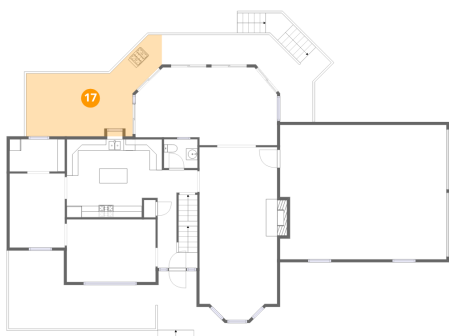
16 Floor 2 - Deck



Dimensions: 28'7" x 12'1"
Area: 244 sq. ft
Counted as living area: No

Heated: No
Finished: No
Enclosed: No
Contiguous: Yes
Permitted: Yes
Wet space: No
Addition: No
Conversion: No

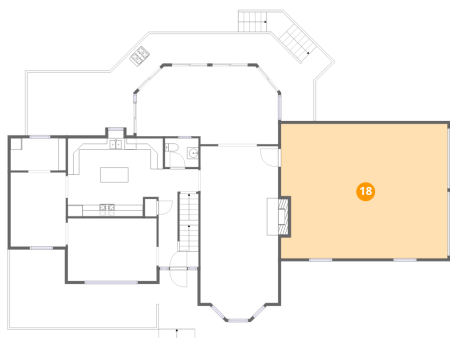
17 Floor 2 - Deck



Dimensions: 21'11" x 14'10"
Area: 245 sq. ft
Counted as living area: No

Heated: No
Finished: No
Enclosed: No
Contiguous: Yes
Permitted: Yes
Wet space: No
Addition: No
Conversion: No

18 Floor 2 - Garage



Dimensions: 28'11" x 23'4"

Area: 663 sq. ft

Counted as living area: No

Heated: No

Finished: No

Enclosed: Yes

Contiguous: Yes

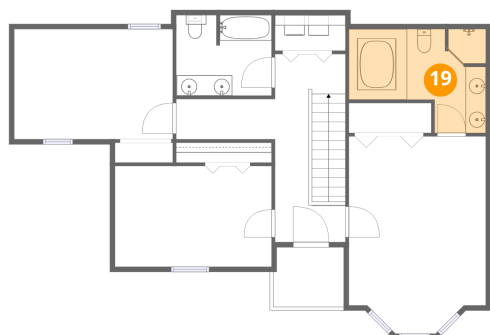
Permitted: Yes

Wet space: No

Addition: No

Conversion: No

19 Floor 3 - Primary Bath



Dimensions: 13'6" x 10'2"

Area: 109 sq. ft

Counted as living area: Yes

Heated: Yes

Finished: Yes

Enclosed: Yes

Contiguous: Yes

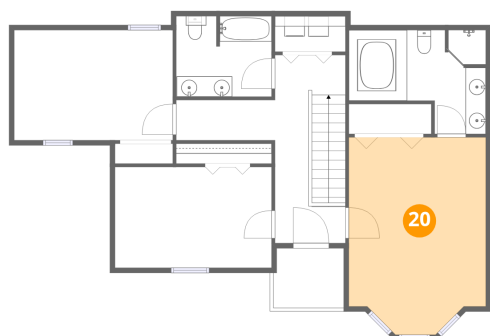
Permitted: Yes

Wet space: Yes

Addition: No

Conversion: No

20 Floor 3 - Primary Bedroom



Dimensions: 13'6" x 19'5"

Area: 244 sq. ft

Counted as living area: Yes

Heated: Yes

Finished: Yes

Enclosed: Yes

Contiguous: Yes

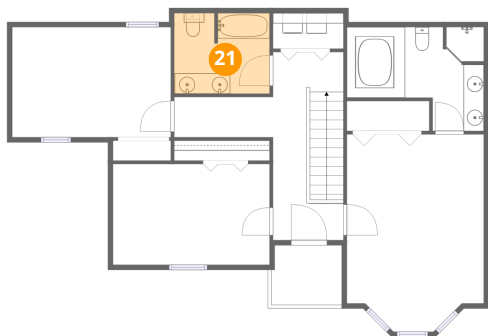
Permitted: Yes

Wet space: No

Addition: No

Conversion: No

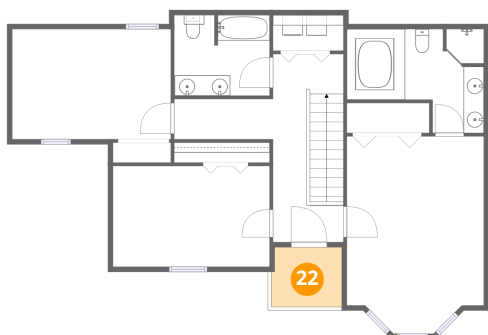
21 Floor 3 - Bath



Dimensions: 9'5" x 7'11"
Area: 74 sq. ft
Counted as living area: Yes

Heated: Yes
Finished: Yes
Enclosed: Yes
Contiguous: Yes
Permitted: Yes
Wet space: Yes
Addition: No
Conversion: No

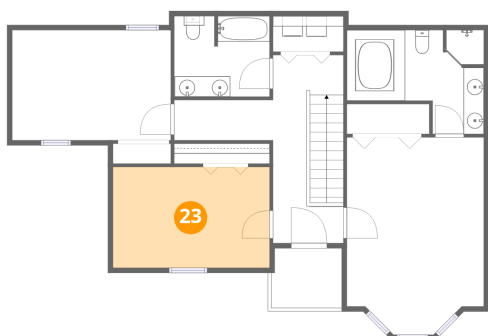
22 Floor 3 - Balcony



Dimensions: 6'11" x 5'10"
Area: 40 sq. ft
Counted as living area: No

Heated: No
Finished: No
Enclosed: No
Contiguous: Yes
Permitted: Yes
Wet space: No
Addition: No
Conversion: No

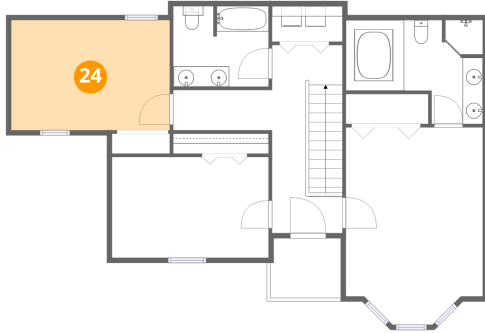
23 Floor 3 - Bedroom



Dimensions: 15'5" x 9'11"
Area: 153 sq. ft
Counted as living area: Yes

Heated: Yes
Finished: Yes
Enclosed: Yes
Contiguous: Yes
Permitted: Yes
Wet space: No
Addition: No
Conversion: No

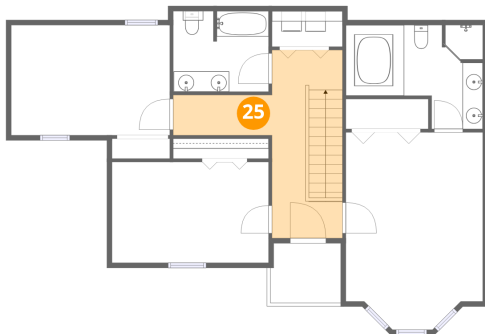
24 Floor 3 - Bedroom



Dimensions: 15'8" x 10'10"
Area: 170 sq. ft
Counted as living area: Yes

Heated: Yes
Finished: Yes
Enclosed: Yes
Contiguous: Yes
Permitted: Yes
Wet space: No
Addition: No
Conversion: No

25 Floor 3 - Hall



Dimensions: 13'1" x 18'6"
Area: 167 sq. ft
Counted as living area: Yes

Heated: Yes
Finished: Yes
Enclosed: Yes
Contiguous: Yes
Permitted: Yes
Wet space: No
Addition: No
Conversion: No