

Home data report

2230 Calais Dr, Unit A, Longmont, CO, US, Unit A



Total Area: 1428 sq. ft


Basement: 0 sq. ft, 1st Floor: 870 sq. ft, 2nd Floor: 558 sq. ft

Excluded: Basement 870 sq. ft, Garage 367 sq. ft, Deck 94 sq. ft, Open to below 344 sq. ft,

Walls: 195 sq. ft

Property summary

 **3** Floors

 **3** Bedrooms

 **2** Bathrooms

Home data report

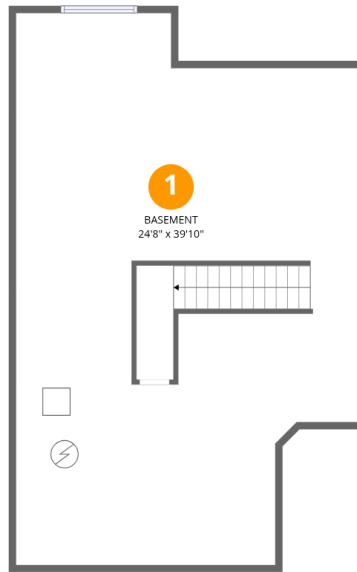
2230 Calais Dr, Unit A, Longmont, CO, US, Unit A

 **1**
Half baths

 **1**
Garages

Home data report

2230 Calais Dr, Unit A, Longmont, CO, US, Unit A



Room dimensions

Floor 1 Below grade

Total: 0sqft

Excluded: 870sqft

#		Dimensions	sqft	Counted as living area
1	Basement	24'8" x 39'10"	983 sq. ft	No

Home data report

2230 Calais Dr, Unit A, Longmont, CO, US, Unit A



Room dimensions

Floor 2

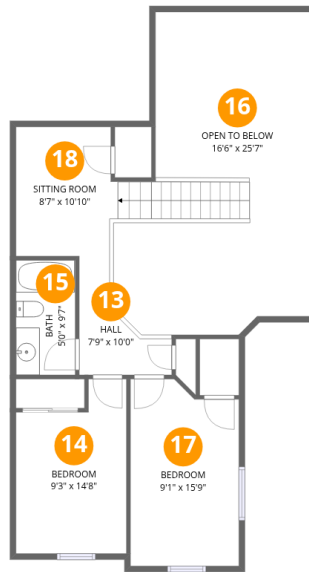
Total:870sqft

Excluded: 461sqft

#		Dimensions	sqft	Counted as living area
2	Foyer	4'5" x 11'7"	52 sq. ft	Yes
3	Living Room	13'6" x 13'11"	188 sq. ft	Yes
4	W.I.C.	7'4" x 5'5"	39 sq. ft	Yes
5	Garage	18'9" x 19'7"	367 sq. ft	No
6	Laundry	5'5" x 6'11"	38 sq. ft	Yes
7	Bath	5'5" x 4'5"	24 sq. ft	Yes
8	Deck	13'2" x 5'8"	74 sq. ft	No
9	Kitchen	12'11" x 10'4"	133 sq. ft	Yes
10	Dining Area	12'7" x 7'10"	99 sq. ft	Yes
11	Primary Bath	8'4" x 8'7"	72 sq. ft	Yes
12	Primary Bedroom	11'3" x 13'1"	147 sq. ft	Yes

Home data report

2230 Calais Dr, Unit A, Longmont, CO, US, Unit A



Room dimensions

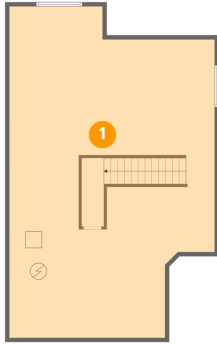
Floor 3

Total: 558sqft

Excluded: 344sqft

#		Dimensions	sqft	Counted as living area
13	Hall	7'9" x 10'0"	78 sq. ft	Yes
14	Bedroom	9'3" x 14'8"	136 sq. ft	Yes
15	Bath	5'0" x 9'7"	48 sq. ft	Yes
16	Open To Below	16'6" x 25'7"	422 sq. ft	No
17	Bedroom	9'1" x 15'9"	143 sq. ft	Yes
18	Sitting Room	8'7" x 10'10"	93 sq. ft	Yes

1 Floor 1 - Basement



Dimensions: 24'8" x 39'10"
Area: 983 sq. ft
Counted as living area: No

Heated: Yes
Finished: No
Enclosed: Yes
Contiguous: Yes
Permitted: Yes
Wet space: No
Addition: No
Conversion: No

2 Floor 2 - Foyer



Dimensions: 4'5" x 11'7"
Area: 52 sq. ft
Counted as living area: Yes

Heated: Yes
Finished: Yes
Enclosed: Yes
Contiguous: Yes
Permitted: Yes
Wet space: No
Addition: No
Conversion: No

3 Floor 2 - Living Room



Dimensions: 13'6" x 13'11"
Area: 188 sq. ft
Counted as living area: Yes

Heated: Yes
Finished: Yes
Enclosed: Yes
Contiguous: Yes
Permitted: Yes
Wet space: No
Addition: No
Conversion: No

4 Floor 2 - W.I.C.



Dimensions: 7'4" x 5'5"
Area: 39 sq. ft
Counted as living area: Yes

Heated: Yes
Finished: Yes
Enclosed: Yes
Contiguous: Yes
Permitted: Yes
Wet space: No
Addition: No
Conversion: No

5 Floor 2 - Garage



Dimensions: 18'9" x 19'7"
Area: 367 sq. ft
Counted as living area: No

Heated: No
Finished: No
Enclosed: Yes
Contiguous: Yes
Permitted: Yes
Wet space: No
Addition: No
Conversion: No

6 Floor 2 - Laundry



Dimensions: 5'5" x 6'11"
Area: 38 sq. ft
Counted as living area: Yes

Heated: Yes
Finished: Yes
Enclosed: Yes
Contiguous: Yes
Permitted: Yes
Wet space: No
Addition: No
Conversion: No

7 Floor 2 - Bath



Dimensions: 5'5" x 4'5"
Area: 24 sq. ft
Counted as living area: Yes

Heated: Yes
Finished: Yes
Enclosed: Yes
Contiguous: Yes
Permitted: Yes
Wet space: Yes
Addition: No
Conversion: No

8 Floor 2 - Deck



Dimensions: 13'2" x 5'8"
Area: 74 sq. ft
Counted as living area: No

Heated: No
Finished: No
Enclosed: No
Contiguous: Yes
Permitted: Yes
Wet space: No
Addition: No
Conversion: No

9 Floor 2 - Kitchen



Dimensions: 12'11" x 10'4"
Area: 133 sq. ft
Counted as living area: Yes

Heated: Yes
Finished: Yes
Enclosed: Yes
Contiguous: Yes
Permitted: Yes
Wet space: No
Addition: No
Conversion: No

10 Floor 2 - Dining Area



Dimensions: 12'7" x 7'10"
Area: 99 sq. ft
Counted as living area: Yes

Heated: Yes
Finished: Yes
Enclosed: Yes
Contiguous: Yes
Permitted: Yes
Wet space: No
Addition: No
Conversion: No

11 Floor 2 - Primary Bath



Dimensions: 8'4" x 8'7"
Area: 72 sq. ft
Counted as living area: Yes

Heated: Yes
Finished: Yes
Enclosed: Yes
Contiguous: Yes
Permitted: Yes
Wet space: Yes
Addition: No
Conversion: No

12 Floor 2 - Primary Bedroom



Dimensions: 11'3" x 13'1"
Area: 147 sq. ft
Counted as living area: Yes

Heated: Yes
Finished: Yes
Enclosed: Yes
Contiguous: Yes
Permitted: Yes
Wet space: No
Addition: No
Conversion: No

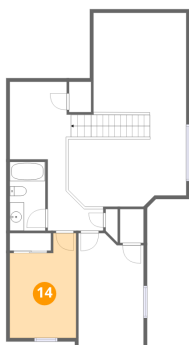
13 Floor 3 - Hall



Dimensions: 7'9" x 10'0"
Area: 78 sq. ft
Counted as living area: Yes

Heated: Yes
Finished: Yes
Enclosed: Yes
Contiguous: Yes
Permitted: Yes
Wet space: No
Addition: No
Conversion: No

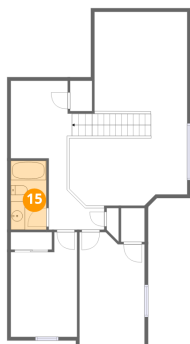
14 Floor 3 - Bedroom



Dimensions: 9'3" x 14'8"
Area: 136 sq. ft
Counted as living area: Yes

Heated: Yes
Finished: Yes
Enclosed: Yes
Contiguous: Yes
Permitted: Yes
Wet space: No
Addition: No
Conversion: No

15 Floor 3 - Bath



Dimensions: 5'0" x 9'7"
Area: 48 sq. ft
Counted as living area: Yes

Heated: Yes
Finished: Yes
Enclosed: Yes
Contiguous: Yes
Permitted: Yes
Wet space: Yes
Addition: No
Conversion: No

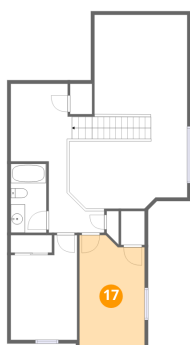
16 Floor 3 - Open To Below



Dimensions: 16'6" x 25'7"
Area: 422 sq. ft
Counted as living area: No

Heated: No
Finished: No
Enclosed: No
Contiguous: Yes
Permitted: No
Wet space: No
Addition: No
Conversion: No

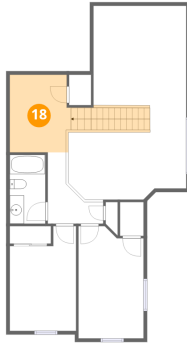
17 Floor 3 - Bedroom



Dimensions: 9'1" x 15'9"
Area: 143 sq. ft
Counted as living area: Yes

Heated: Yes
Finished: Yes
Enclosed: Yes
Contiguous: Yes
Permitted: Yes
Wet space: No
Addition: No
Conversion: No

18 Floor 3 - Sitting Room



Dimensions: 8'7" x 10'10"
Area: 93 sq. ft
Counted as living area: Yes

Heated: Yes
Finished: Yes
Enclosed: Yes
Contiguous: Yes
Permitted: Yes
Wet space: No
Addition: No
Conversion: No