

Home data report

2708 Boulder Circle Southeast, Huntsville, Madison County, Alabama, United States, 35801



Total Area: 3592 sq. ft
1st Floor: 2319 sq. ft, 2nd Floor: 1273 sq. ft
Excluded: Garage 508 sq. ft, Screened porch 223 sq. ft, Open to below 308 sq. ft, Walls: 292 sq. ft

Property summary

**2** Floors

**4** Bedrooms

**4** Bathrooms

**1** Garages

2708 Boulder Circle Southeast, Huntsville, Madison County, Alabama, United States, 35801



Room dimensions

Floor 1 Total:2319sqft Excluded: 731sqft

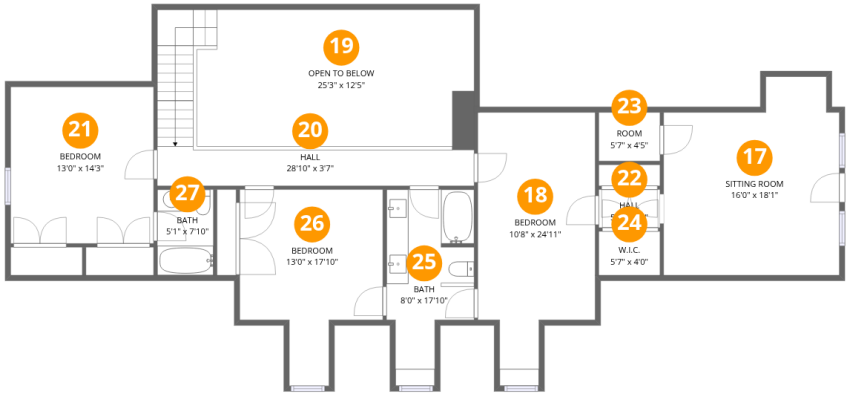
#		Dimensions	sqft	Counted as living area
1	W.I.C.	13'0" x 12'3"	160 sq. ft	Yes
2	Bath	2'10" x 4'3"	12 sq. ft	Yes
3	Screened Porch	19'4" x 11'6"	223 sq. ft	No
4	Office	6'1" x 4'6"	27 sq. ft	Yes
5	Bath	7'2" x 15'7"	112 sq. ft	Yes
6	Bath	8'6" x 5'0"	43 sq. ft	Yes
7	Primary Bedroom	13'0" x 24'11"	324 sq. ft	Yes
8	Office	12'8" x 13'11"	176 sq. ft	Yes
9	Laundry	6'11" x 8'1"	56 sq. ft	Yes
10	Living Room	26'10" x 23'6"	631 sq. ft	Yes
11	Hall	6'5" x 3'3"	21 sq. ft	Yes

Home data report

**2708 Boulder Circle Southeast, Huntsville, Madison County,
Alabama, United States, 35801**

#		Dimensions	sqft	Counted as living area
12	Wet Bar	10'7" x 2'7"	28 sq. ft	Yes
13	Dining Room	12'11" x 18'5"	238 sq. ft	Yes
14	Eat-in Kitchen	21'7" x 26'8"	575 sq. ft	Yes
15	Garage	21'9" x 23'4"	507 sq. ft	No
16	Foyer	6'1" x 13'11"	84 sq. ft	Yes

2708 Boulder Circle Southeast, Huntsville, Madison County, Alabama, United States, 35801



Room dimensions

Floor 2 Total:1273sqft Excluded: 308sqft

#		Dimensions	sqft	Counted as living area
17	Sitting Room	16'0" x 18'1"	289 sq. ft	Yes
18	Bedroom	10'8" x 24'11"	266 sq. ft	Yes
19	Open To Below	25'3" x 12'5"	314 sq. ft	No
20	Hall	28'10" x 3'7"	103 sq. ft	Yes
21	Bedroom	13'0" x 14'3"	186 sq. ft	Yes
22	Hall	5'7" x 3'6"	19 sq. ft	Yes
23	Room	5'7" x 4'5"	25 sq. ft	Yes
24	W.I.C.	5'7" x 4'0"	22 sq. ft	Yes
25	Bath	8'0" x 17'10"	143 sq. ft	Yes
26	Bedroom	13'0" x 17'10"	233 sq. ft	Yes
27	Bath	5'1" x 7'10"	40 sq. ft	Yes

2708 Boulder Circle Southeast, Huntsville, Madison County,
Alabama, United States, 35801

1 Floor 1 - W.I.C.



Dimensions: 13'0" x 12'3"
Area: 160 sq. ft
Counted as living area: Yes

Heated: Yes
Finished: Yes
Enclosed: Yes
Contiguous: Yes
Permitted: Yes
Wet space: No
Addition: No
Conversion: No

2 Floor 1 - Bath



Dimensions: 2'10" x 4'3"
Area: 12 sq. ft
Counted as living area: Yes

Heated: Yes
Finished: Yes
Enclosed: Yes
Contiguous: Yes
Permitted: Yes
Wet space: No
Addition: No
Conversion: No

2708 Boulder Circle Southeast, Huntsville, Madison County,
Alabama, United States, 35801

3 Floor 1 - Screened Porch



Dimensions: 19'4" x 11'6"
Area: 223 sq. ft
Counted as living area: No

Heated: No
Finished: No
Enclosed: No
Contiguous: Yes
Permitted: Yes
Wet space: No
Addition: No
Conversion: No

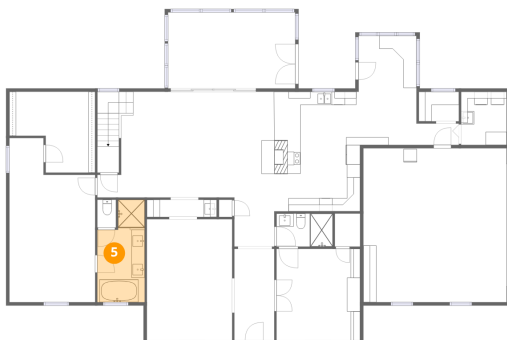
4 Floor 1 - Office



Dimensions: 6'1" x 4'6"
Area: 27 sq. ft
Counted as living area: Yes

Heated: Yes
Finished: Yes
Enclosed: Yes
Contiguous: Yes
Permitted: Yes
Wet space: No
Addition: No
Conversion: No

5 Floor 1 - Bath



Dimensions: 7'2" x 15'7"
Area: 112 sq. ft
Counted as living area: Yes

Heated: Yes
Finished: Yes
Enclosed: Yes
Contiguous: Yes
Permitted: Yes
Wet space: Yes
Addition: No
Conversion: No

Home data report

2708 Boulder Circle Southeast, Huntsville, Madison County,
Alabama, United States, 35801

6 Floor 1 - Bath



Dimensions: 8'6" x 5'0"
Area: 43 sq. ft
Counted as living area: Yes

Heated: Yes
Finished: Yes
Enclosed: Yes
Contiguous: Yes
Permitted: Yes
Wet space: Yes
Addition: No
Conversion: No

7 Floor 1 - Primary Bedroom



Dimensions: 13'0" x 24'11"
Area: 324 sq. ft
Counted as living area: Yes

Heated: Yes
Finished: Yes
Enclosed: Yes
Contiguous: Yes
Permitted: Yes
Wet space: No
Addition: No
Conversion: No

8 Floor 1 - Office



Dimensions: 12'8" x 13'11"
Area: 176 sq. ft
Counted as living area: Yes

Heated: Yes
Finished: Yes
Enclosed: Yes
Contiguous: Yes
Permitted: Yes
Wet space: No
Addition: No
Conversion: No

2708 Boulder Circle Southeast, Huntsville, Madison County,
Alabama, United States, 35801

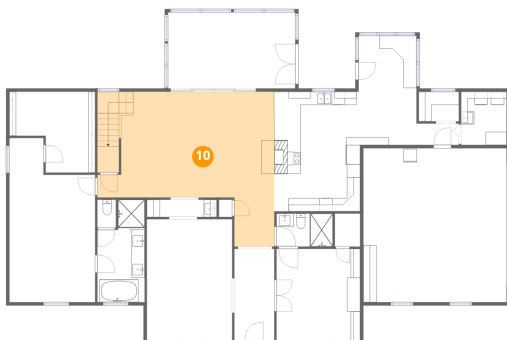
9 Floor 1 - Laundry



Dimensions: 6'11" x 8'1"
Area: 56 sq. ft
Counted as living area: Yes

Heated: Yes
Finished: Yes
Enclosed: Yes
Contiguous: Yes
Permitted: Yes
Wet space: No
Addition: No
Conversion: No

10 Floor 1 - Living Room



Dimensions: 26'10" x 23'6"
Area: 631 sq. ft
Counted as living area: Yes

Heated: Yes
Finished: Yes
Enclosed: Yes
Contiguous: Yes
Permitted: Yes
Wet space: No
Addition: No
Conversion: No

11 Floor 1 - Hall



Dimensions: 6'5" x 3'3"
Area: 21 sq. ft
Counted as living area: Yes

Heated: Yes
Finished: Yes
Enclosed: Yes
Contiguous: Yes
Permitted: Yes
Wet space: No
Addition: No
Conversion: No

2708 Boulder Circle Southeast, Huntsville, Madison County,
Alabama, United States, 35801

12 Floor 1 - Wet Bar



Dimensions: 10'7" x 2'7"
Area: 28 sq. ft
Counted as living area: Yes

Heated: Yes
Finished: Yes
Enclosed: Yes
Contiguous: Yes
Permitted: Yes
Wet space: No
Addition: No
Conversion: No

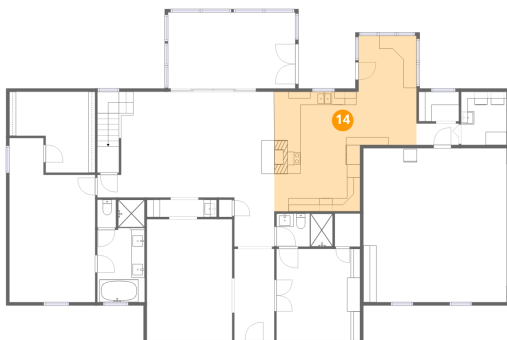
13 Floor 1 - Dining Room



Dimensions: 12'11" x 18'5"
Area: 238 sq. ft
Counted as living area: Yes

Heated: Yes
Finished: Yes
Enclosed: Yes
Contiguous: Yes
Permitted: Yes
Wet space: No
Addition: No
Conversion: No

14 Floor 1 - Eat-in Kitchen



Dimensions: 21'7" x 26'8"
Area: 575 sq. ft
Counted as living area: Yes

Heated: Yes
Finished: Yes
Enclosed: Yes
Contiguous: Yes
Permitted: Yes
Wet space: No
Addition: No
Conversion: No

Home data report

2708 Boulder Circle Southeast, Huntsville, Madison County,
Alabama, United States, 35801

15 Floor 1 - Garage



Dimensions: 21'9" x 23'4"
Area: 507 sq. ft
Counted as living area: No

Heated: No
Finished: No
Enclosed: Yes
Contiguous: Yes
Permitted: Yes
Wet space: No
Addition: No
Conversion: No

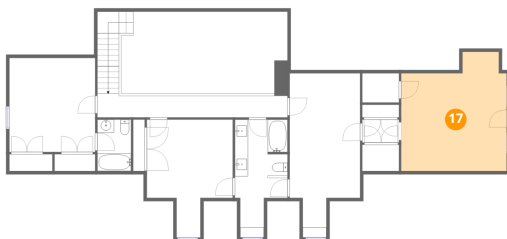
16 Floor 1 - Foyer



Dimensions: 6'1" x 13'11"
Area: 84 sq. ft
Counted as living area: Yes

Heated: Yes
Finished: Yes
Enclosed: Yes
Contiguous: Yes
Permitted: Yes
Wet space: No
Addition: No
Conversion: No

17 Floor 2 - Sitting Room

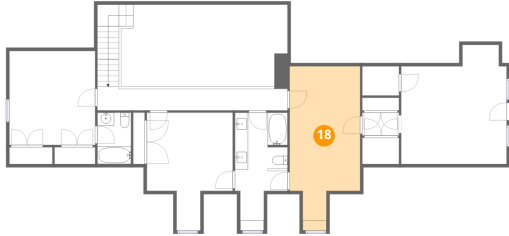


Dimensions: 16'0" x 18'1"
Area: 289 sq. ft
Counted as living area: Yes

Heated: Yes
Finished: Yes
Enclosed: Yes
Contiguous: Yes
Permitted: Yes
Wet space: No
Addition: No
Conversion: No

2708 Boulder Circle Southeast, Huntsville, Madison County,
Alabama, United States, 35801

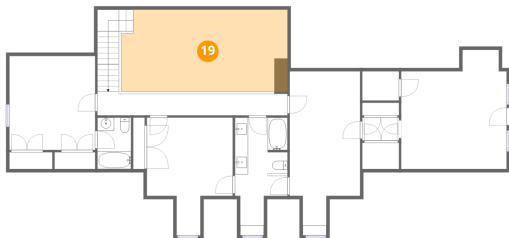
18 Floor 2 - Bedroom



Dimensions: 10'8" x 24'11"
Area: 266 sq. ft
Counted as living area: Yes

Heated: Yes
Finished: Yes
Enclosed: Yes
Contiguous: Yes
Permitted: Yes
Wet space: No
Addition: No
Conversion: No

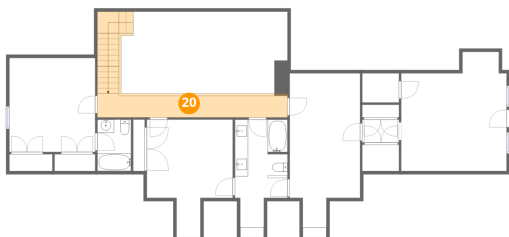
19 Floor 2 - Open To Below



Dimensions: 25'3" x 12'5"
Area: 314 sq. ft
Counted as living area: No

Heated: No
Finished: No
Enclosed: No
Contiguous: Yes
Permitted: No
Wet space: No
Addition: No
Conversion: No

20 Floor 2 - Hall

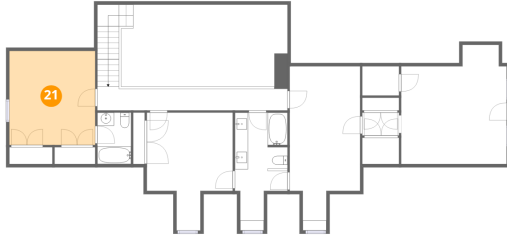


Dimensions: 28'10" x 3'7"
Area: 103 sq. ft
Counted as living area: Yes

Heated: Yes
Finished: Yes
Enclosed: Yes
Contiguous: Yes
Permitted: Yes
Wet space: No
Addition: No
Conversion: No

2708 Boulder Circle Southeast, Huntsville, Madison County,
Alabama, United States, 35801

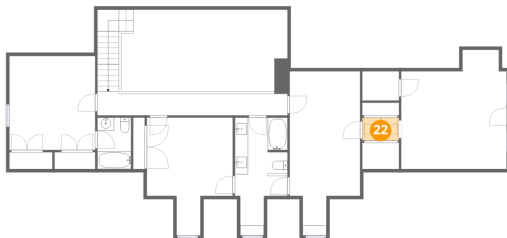
21 Floor 2 - Bedroom



Dimensions: 13'0" x 14'3"
Area: 186 sq. ft
Counted as living area: Yes

Heated: Yes
Finished: Yes
Enclosed: Yes
Contiguous: Yes
Permitted: Yes
Wet space: No
Addition: No
Conversion: No

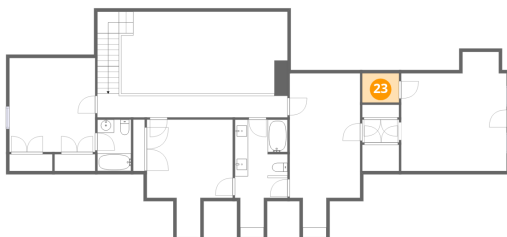
22 Floor 2 - Hall



Dimensions: 5'7" x 3'6"
Area: 19 sq. ft
Counted as living area: Yes

Heated: Yes
Finished: Yes
Enclosed: Yes
Contiguous: Yes
Permitted: Yes
Wet space: No
Addition: No
Conversion: No

23 Floor 2 - Room

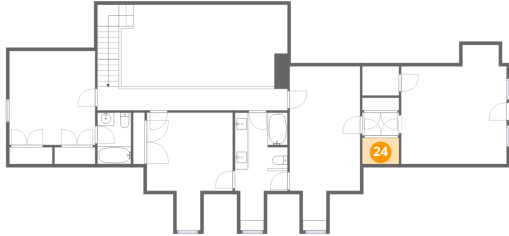


Dimensions: 5'7" x 4'5"
Area: 25 sq. ft
Counted as living area: Yes

Heated: Yes
Finished: Yes
Enclosed: Yes
Contiguous: Yes
Permitted: Yes
Wet space: No
Addition: No
Conversion: No

2708 Boulder Circle Southeast, Huntsville, Madison County,
Alabama, United States, 35801

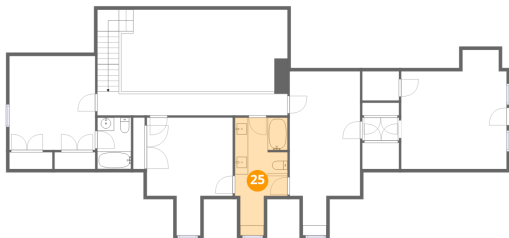
24 Floor 2 - W.I.C.



Dimensions: 5'7" x 4'0"
Area: 22 sq. ft
Counted as living area: Yes

Heated: Yes
Finished: Yes
Enclosed: Yes
Contiguous: Yes
Permitted: Yes
Wet space: No
Addition: No
Conversion: No

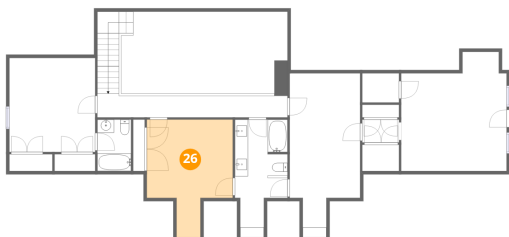
25 Floor 2 - Bath



Dimensions: 8'0" x 17'10"
Area: 143 sq. ft
Counted as living area: Yes

Heated: Yes
Finished: Yes
Enclosed: Yes
Contiguous: Yes
Permitted: Yes
Wet space: Yes
Addition: No
Conversion: No

26 Floor 2 - Bedroom

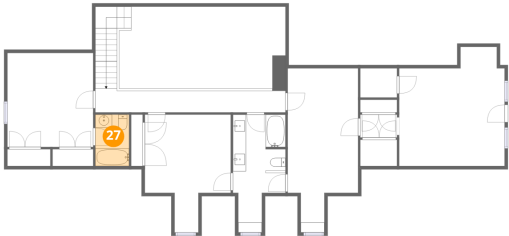


Dimensions: 13'0" x 17'10"
Area: 233 sq. ft
Counted as living area: Yes

Heated: Yes
Finished: Yes
Enclosed: Yes
Contiguous: Yes
Permitted: Yes
Wet space: No
Addition: No
Conversion: No

2708 Boulder Circle Southeast, Huntsville, Madison County,
Alabama, United States, 35801

27 Floor 2 - Bath



Dimensions: 5'1" x 7'10"
Area: 40 sq. ft
Counted as living area: Yes

Heated: Yes
Finished: Yes
Enclosed: Yes
Contiguous: Yes
Permitted: Yes
Wet space: Yes
Addition: No
Conversion: No