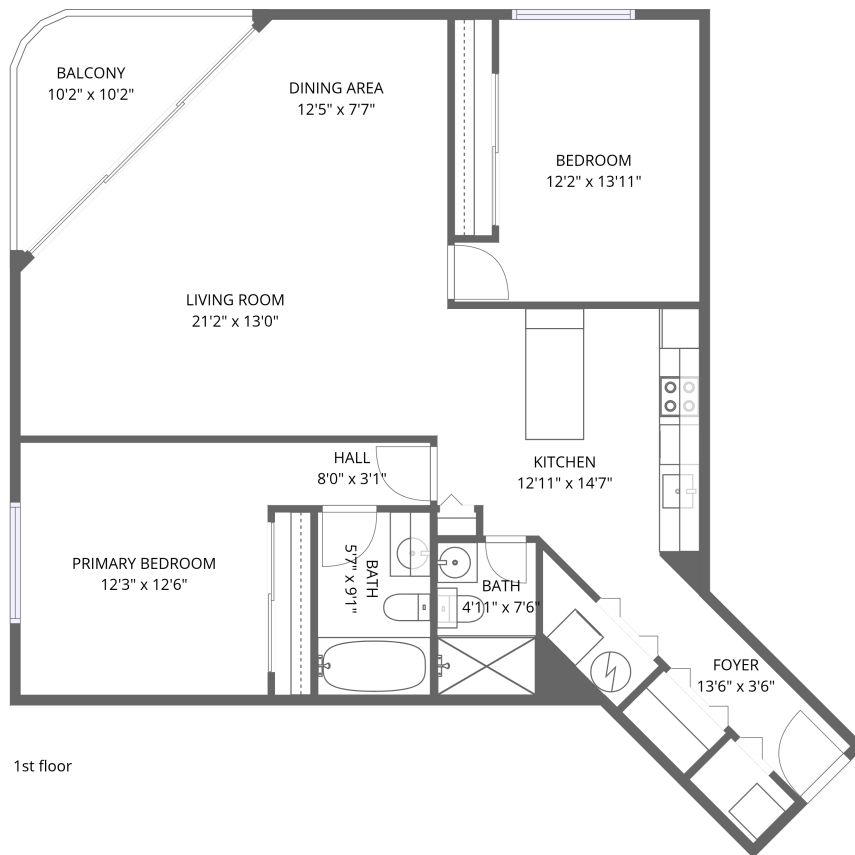


Home data report

10300 Coastal Hwy unit 1006, Ocean City, MD, US



1st floor


**Total Area: 1105 sq. ft**


1st Floor: 1105 sq. ft

Excluded: Balcony 71 sq. ft, Walls: 0 sq. ft

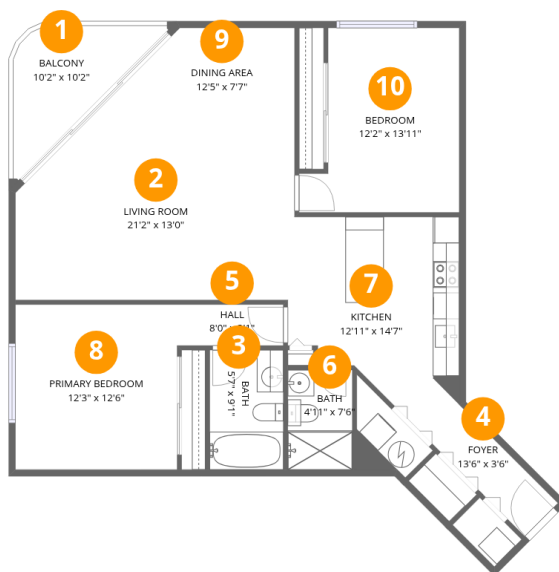
## Property summary

 **1** Floors

 **2** Bedrooms

 **2** Bathrooms

# 10300 Coastal Hwy unit 1006, Ocean City, MD, US



## Room dimensions

Floor 1

Total: 1105 sqft Excluded: 71 sqft

#		Dimensions	sqft	Counted as living area
1	Balcony	10'2" x 10'2"	104 sq. ft	No
2	Living Room	21'2" x 13'0"	275 sq. ft	Yes
3	Bath	5'7" x 9'1"	50 sq. ft	Yes
4	Foyer	13'6" x 3'6"	47 sq. ft	Yes
5	Hall	8'0" x 3'1"	25 sq. ft	Yes
6	Bath	4'11" x 7'6"	37 sq. ft	Yes
7	Kitchen	12'11" x 14'7"	189 sq. ft	Yes
8	Primary Bedroom	12'3" x 12'6"	153 sq. ft	Yes
9	Dining Area	12'5" x 7'7"	94 sq. ft	Yes
10	Bedroom	12'2" x 13'11"	169 sq. ft	Yes

## 1 Floor 1 - Balcony



Dimensions: 10'2" x 10'2"  
Area: 104 sq. ft  
Counted as living area: No

Heated: No  
Finished: No  
Enclosed: No  
Contiguous: Yes  
Permitted: Yes  
Wet space: No  
Addition: No  
Conversion: No

## 2 Floor 1 - Living Room



Dimensions: 21'2" x 13'0"  
Area: 275 sq. ft  
Counted as living area: Yes

Heated: Yes  
Finished: Yes  
Enclosed: Yes  
Contiguous: Yes  
Permitted: Yes  
Wet space: No  
Addition: No  
Conversion: No

### 3 Floor 1 - Bath



Dimensions: 5'7" x 9'1"  
Area: 50 sq. ft  
Counted as living area: Yes

Heated: Yes  
Finished: Yes  
Enclosed: Yes  
Contiguous: Yes  
Permitted: Yes  
Wet space: Yes  
Addition: No  
Conversion: No

### 4 Floor 1 - Foyer



Dimensions: 13'6" x 3'6"  
Area: 47 sq. ft  
Counted as living area: Yes

Heated: Yes  
Finished: Yes  
Enclosed: Yes  
Contiguous: Yes  
Permitted: Yes  
Wet space: No  
Addition: No  
Conversion: No

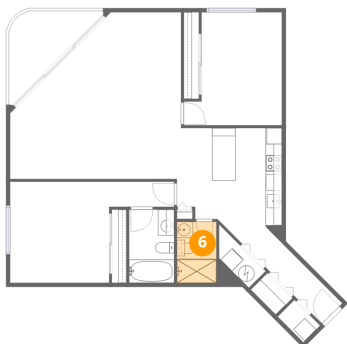
### 5 Floor 1 - Hall



Dimensions: 8'0" x 3'1"  
Area: 25 sq. ft  
Counted as living area: Yes

Heated: Yes  
Finished: Yes  
Enclosed: Yes  
Contiguous: Yes  
Permitted: Yes  
Wet space: No  
Addition: No  
Conversion: No

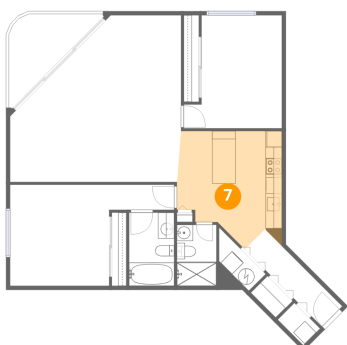
### 6 Floor 1 - Bath



Dimensions: 4'11" x 7'6"  
Area: 37 sq. ft  
Counted as living area: Yes

Heated: Yes  
Finished: Yes  
Enclosed: Yes  
Contiguous: Yes  
Permitted: Yes  
Wet space: Yes  
Addition: No  
Conversion: No

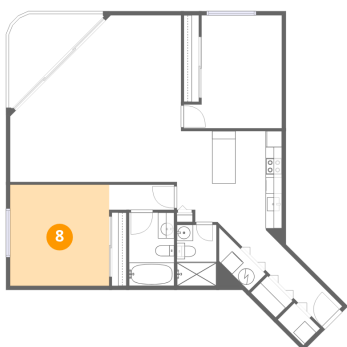
### 7 Floor 1 - Kitchen



Dimensions: 12'11" x 14'7"  
Area: 189 sq. ft  
Counted as living area: Yes

Heated: Yes  
Finished: Yes  
Enclosed: Yes  
Contiguous: Yes  
Permitted: Yes  
Wet space: No  
Addition: No  
Conversion: No

### 8 Floor 1 - Primary Bedroom

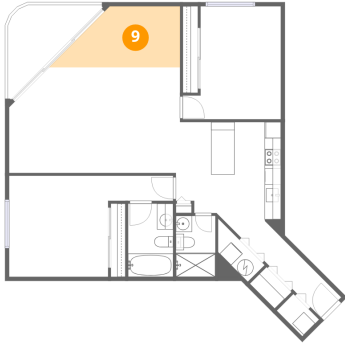


Dimensions: 12'3" x 12'6"  
Area: 153 sq. ft  
Counted as living area: Yes

Heated: Yes  
Finished: Yes  
Enclosed: Yes  
Contiguous: Yes  
Permitted: Yes  
Wet space: No  
Addition: No  
Conversion: No

**9** Floor 1 - Dining Area

---



Dimensions: 12'5" x 7'7"  
Area: 94 sq. ft  
Counted as living area: Yes

Heated: Yes  
Finished: Yes  
Enclosed: Yes  
Contiguous: Yes  
Permitted: Yes  
Wet space: No  
Addition: No  
Conversion: No

**10** Floor 1 - Bedroom

---



Dimensions: 12'2" x 13'11"  
Area: 169 sq. ft  
Counted as living area: Yes

Heated: Yes  
Finished: Yes  
Enclosed: Yes  
Contiguous: Yes  
Permitted: Yes  
Wet space: No  
Addition: No  
Conversion: No