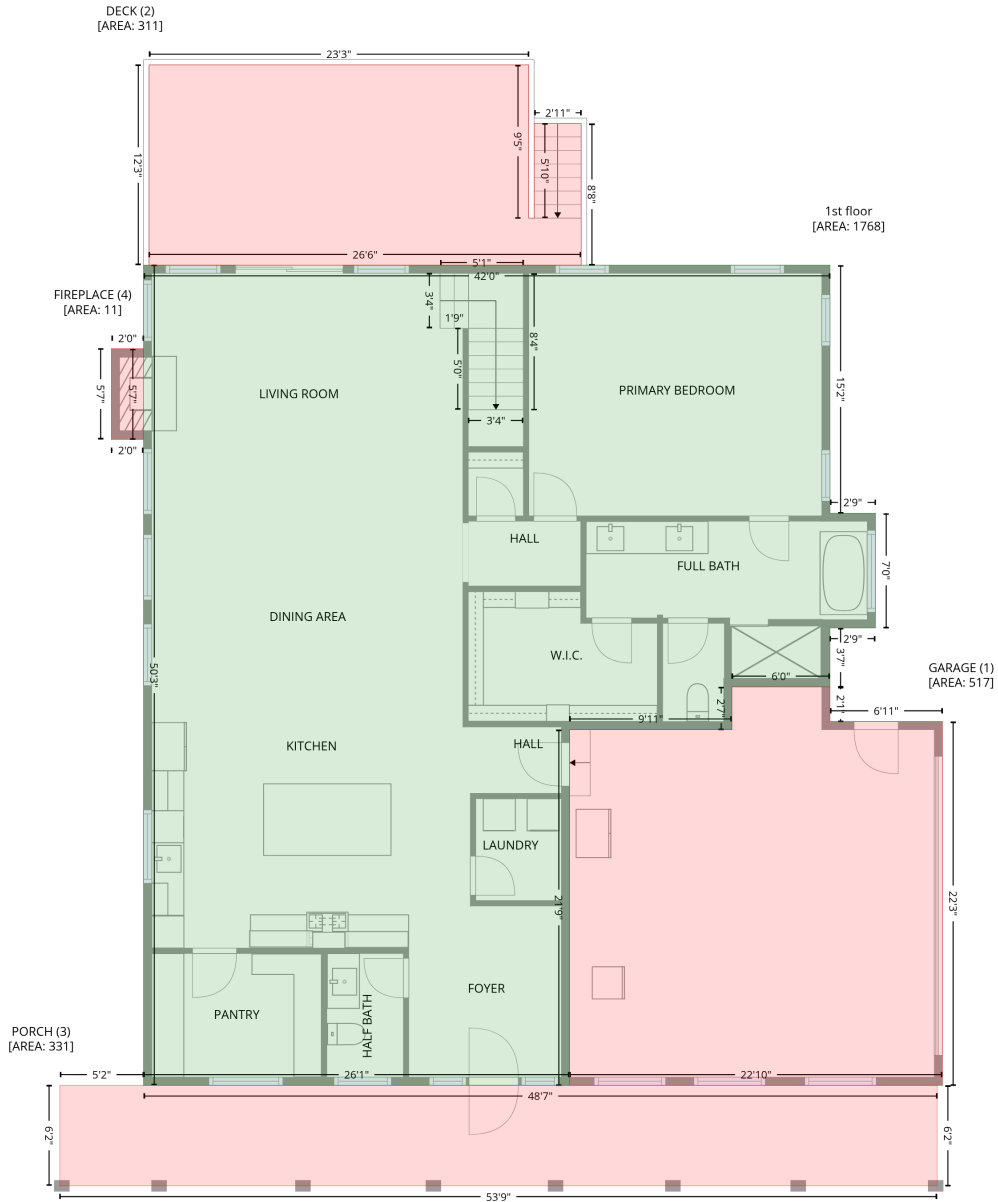


355 Cal Kennedy Rd, Cleveland, NC, US

Gross Living Area: 3275 sq. ft

Level 1



Space

Area (sq. ft)

Calculation Coordinate Polygon Area Algorithm using inches

Space	Area (sq. ft)	Calculation
1st floor (Living area)	1768	$-\left((598.8 + 598.8) * (263 - 445.2) + (598.8 + 632.3) * (445.2 - 445.2) + (632.3 + 632.3) * (445.2 - 529.6) + (632.3 + 598.8) * (529.6 - 529.6) + (598.8 + 598.8) * (529.6 - 572.9) + (598.8 + 526.8) * (572.9 - 572.9) + (526.8 + 526.8) * (572.9 - 604.4) + (526.8 + 407.5) * (604.4 - 604.4) + (407.5 + 407.5) * (604.4 - 865.8) + (407.5 + 94.4) * (865.8 - 865.8) + (94.4 + 94.4) * (865.8 - 263) + (94.4 + 598.8) * (263 - 263)\right) * 0.5 * 0.00694$

355 Cal Kennedy Rd,Cleveland,NC,US

Gross Living Area: 3275 sq. ft

Level 1

Space	Area (sq. ft)	Calculation <small>Coordinate Polygon Area Algorithm using inches</small>
GARAGE (Non-living area)	517	$-\left((598.8 + 598.8) * (572.9 - 598.4) + (598.8 + 681.5) * (598.4 - 598.4) + (681.5 + 681.5) * (598.4 - 865.8) + (681.5 + 407.5) * (865.8 - 865.8) + (407.5 + 407.5) * (865.8 - 604.4) + (407.5 + 526.8) * (604.4 - 604.4) + (526.8 + 526.8) * (604.4 - 572.9) + (526.8 + 598.8) * (572.9 - 572.9)\right) * 0.5 * 0.00694$
DECK (Non-living area)	311	$-\left((377.5 + 377.5) * (115.8 - 228.4) + (377.5 + 381.5) * (228.4 - 228.4) + (381.5 + 381.5) * (228.4 - 158.9) + (381.5 + 416.1) * (158.9 - 158.9) + (416.1 + 416.1) * (158.9 - 263) + (416.1 + 98.4) * (263 - 263) + (98.4 + 98.4) * (263 - 115.8) + (98.4 + 377.5) * (115.8 - 115.8)\right) * 0.5 * 0.00694$
PORCH (Non-living area)	331	$-\left((32.8 + 94.4) * (865.8 - 865.8) + (94.4 + 677.7) * (865.8 - 865.8) + (677.7 + 677.7) * (865.8 - 939.7) + (677.7 + 32.8) * (939.7 - 939.7) + (32.8 + 32.8) * (939.7 - 865.8)\right) * 0.5 * 0.00694$
FIREPLACE (Non-living area)	11	$-\left((94.4 + 94.4) * (324.4 - 391) + (94.4 + 70.8) * (391 - 391) + (70.8 + 70.8) * (391 - 324.4) + (70.8 + 94.4) * (324.4 - 324.4)\right) * 0.5 * 0.00694$

355 Cal Kennedy Rd, Cleveland, NC, US

Gross Living Area: 3275 sq. ft

Level 2



Space	Area (sq. ft)	Calculation <small>Coordinate Polygon Area Algorithm using inches</small>
2nd floor (Living area)	1507	$-((379.5 + 379.5) * (353 - 445.2) + (379.5 + 598.8) * (445.2 - 445.2) + (598.8 + 598.8) * (445.2 - 865.8) + (598.8 + 94.4) * (865.8 - 865.8) + (94.4 + 94.4) * (865.8 - 445.2) + (94.4 + 326.7) * (445.2 - 445.2) + (326.7 + 326.7) * (445.2 - 353) + (326.7 + 379.5) * (353 - 353)) * 0.5 * 0.00694$