



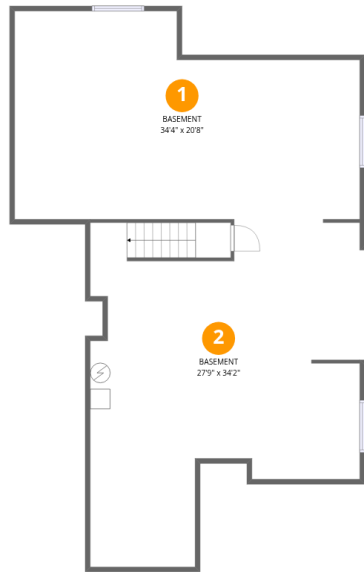
Total Area: 3080 sq. ft

Basement: 0 sq. ft, 1st Floor: 1396 sq. ft, 2nd Floor: 1684 sq. ft

Excluded: Basement 1396 sq. ft, Garage 847 sq. ft, Deck 226 sq. ft, Covered patio 189 sq. ft, Undefined 20 sq. ft, Walls: 331 sq. ft

Property summary





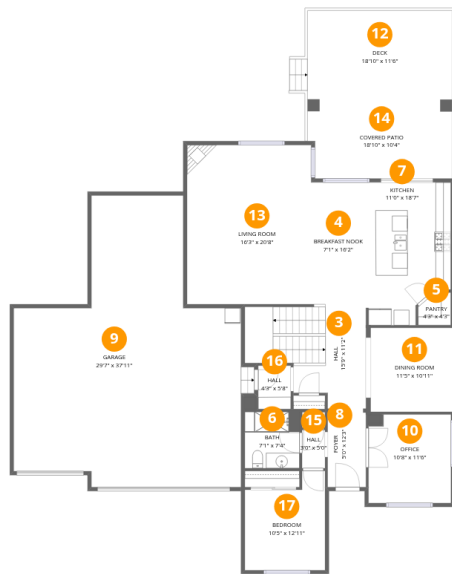
Room dimensions

Floor 1 Below grade

Total: 0sqft

Excluded: 1396sqft

#		Dimensions	sqft	Counted as living area
1	Basement	34'4" x 20'8"	710 sq. ft	No
2	Basement	27'9" x 34'2"	949 sq. ft	No



Room dimensions

Floor 2

Total: 1396sqft

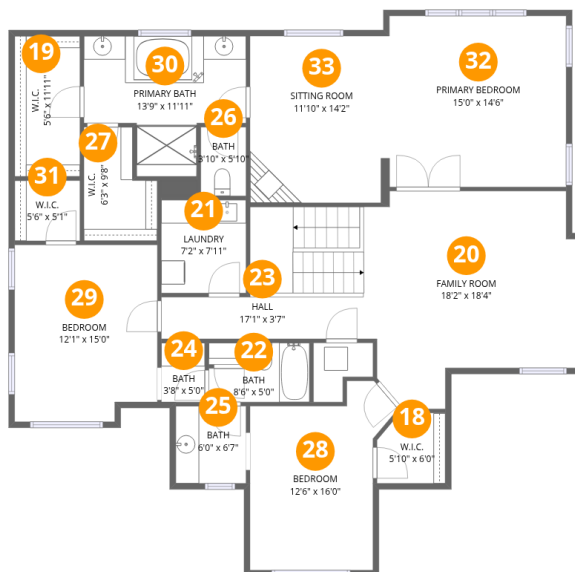
Excluded: 1262sqft

#		Dimensions	sqft	Counted as living area
3	Hall	15'9" x 11'2"	175 sq. ft	Yes
4	Breakfast Nook	7'1" x 16'2"	115 sq. ft	Yes
5	Pantry	4'3" x 4'3"	18 sq. ft	Yes
6	Bath	7'1" x 7'4"	52 sq. ft	Yes
7	Kitchen	11'0" x 18'7"	204 sq. ft	Yes
8	Foyer	5'0" x 12'3"	61 sq. ft	Yes
9	Garage	29'7" x 37'11"	1120 sq. ft	No
10	Office	10'8" x 11'6"	123 sq. ft	Yes
11	Dining Room	11'5" x 10'11"	124 sq. ft	Yes
12	Deck	18'10" x 11'6"	216 sq. ft	No
13	Living Room	16'3" x 20'8"	335 sq. ft	Yes

Home data report

8833 Crestone St,Arvada,CO,US

#		Dimensions	sqft	Counted as living area
14	Covered Patio	18'10" x 10'4"	194 sq. ft	No
15	Hall	3'0" x 5'0"	15 sq. ft	Yes
16	Hall	4'3" x 5'8"	24 sq. ft	Yes
17	Bedroom	10'5" x 12'11"	134 sq. ft	Yes



Room dimensions

Floor 3

Total: 1684 sqft Excluded: 20 sqft

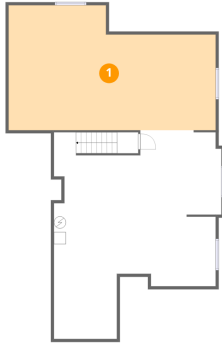
#		Dimensions	sqft	Counted as living area
18	W.I.C.	5'10" x 6'0"	35 sq. ft	Yes
19	W.I.C.	5'6" x 11'11"	66 sq. ft	Yes
20	Family Room	18'2" x 18'4"	334 sq. ft	Yes
21	Laundry	7'2" x 7'11"	57 sq. ft	Yes
22	Bath	8'6" x 5'0"	43 sq. ft	Yes
23	Hall	17'1" x 3'7"	61 sq. ft	Yes
24	Bath	3'8" x 5'0"	19 sq. ft	Yes
25	Bath	6'0" x 6'7"	39 sq. ft	Yes
26	Bath	3'10" x 5'10"	22 sq. ft	Yes
27	W.I.C.	6'3" x 9'8"	60 sq. ft	Yes
28	Bedroom	12'6" x 16'0"	201 sq. ft	Yes

Home data report

8833 Crestone St,Arvada,CO,US

#		Dimensions	sqft	Counted as living area
29	Bedroom	12'1" x 15'0"	181 sq. ft	Yes
30	Primary Bath	13'9" x 11'11"	164 sq. ft	Yes
31	W.I.C.	5'6" x 5'1"	28 sq. ft	Yes
32	Primary Bedroom	15'0" x 14'6"	217 sq. ft	Yes
33	Sitting Room	11'10" x 14'2"	167 sq. ft	Yes

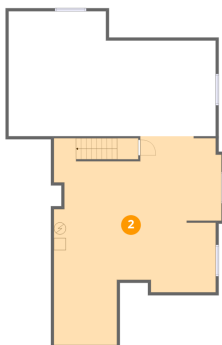
1 Floor 1 - Basement



Dimensions: 34'4" x 20'8"
Area: 710 sq. ft
Counted as living area: No

Heated: Yes
Finished: No
Enclosed: Yes
Contiguous: Yes
Permitted: Yes
Wet space: No
Addition: No
Conversion: No

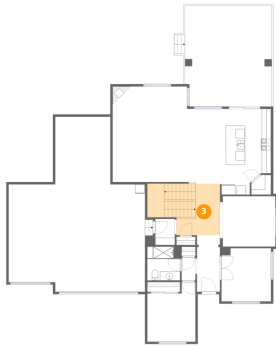
2 Floor 1 - Basement



Dimensions: 27'9" x 34'2"
Area: 949 sq. ft
Counted as living area: No

Heated: Yes
Finished: No
Enclosed: Yes
Contiguous: Yes
Permitted: Yes
Wet space: No
Addition: No
Conversion: No

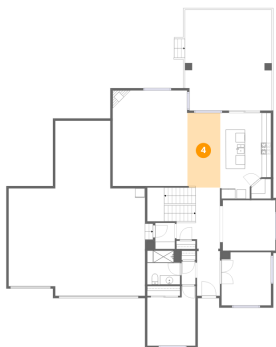
3 Floor 2 - Hall



Dimensions: 15'9" x 11'2"
Area: 175 sq. ft
Counted as living area: Yes

Heated: Yes
Finished: Yes
Enclosed: Yes
Contiguous: Yes
Permitted: Yes
Wet space: No
Addition: No
Conversion: No

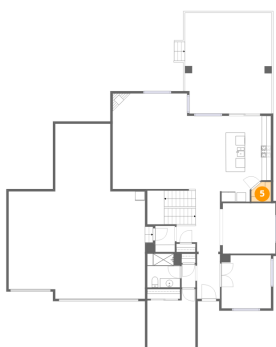
4 Floor 2 - Breakfast Nook



Dimensions: 7'1" x 16'2"
Area: 115 sq. ft
Counted as living area: Yes

Heated: Yes
Finished: Yes
Enclosed: Yes
Contiguous: Yes
Permitted: Yes
Wet space: No
Addition: No
Conversion: No

5 Floor 2 - Pantry



Dimensions: 4'3" x 4'3"
Area: 18 sq. ft
Counted as living area: Yes

Heated: Yes
Finished: Yes
Enclosed: Yes
Contiguous: Yes
Permitted: Yes
Wet space: No
Addition: No
Conversion: No

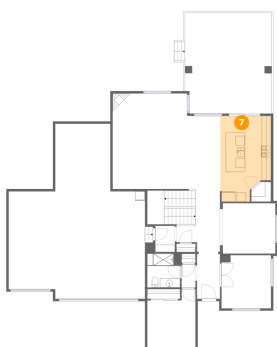
6 Floor 2 - Bath



Dimensions: 7'1" x 7'4"
Area: 52 sq. ft
Counted as living area: Yes

Heated: Yes
Finished: Yes
Enclosed: Yes
Contiguous: Yes
Permitted: Yes
Wet space: Yes
Addition: No
Conversion: No

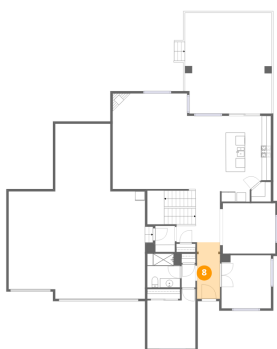
7 Floor 2 - Kitchen



Dimensions: 11'0" x 18'7"
Area: 204 sq. ft
Counted as living area: Yes

Heated: Yes
Finished: Yes
Enclosed: Yes
Contiguous: Yes
Permitted: Yes
Wet space: No
Addition: No
Conversion: No

8 Floor 2 - Foyer



Dimensions: 5'0" x 12'3"
Area: 61 sq. ft
Counted as living area: Yes

Heated: Yes
Finished: Yes
Enclosed: Yes
Contiguous: Yes
Permitted: Yes
Wet space: No
Addition: No
Conversion: No

9 Floor 2 - Garage



Dimensions: 29'7" x 37'11"

Area: 1120 sq. ft

Counted as living area: No

Heated: No

Finished: No

Enclosed: Yes

Contiguous: Yes

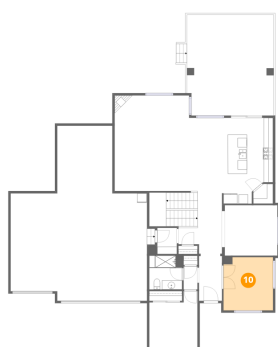
Permitted: Yes

Wet space: No

Addition: No

Conversion: No

10 Floor 2 - Office



Dimensions: 10'8" x 11'6"

Area: 123 sq. ft

Counted as living area: Yes

Heated: Yes

Finished: Yes

Enclosed: Yes

Contiguous: Yes

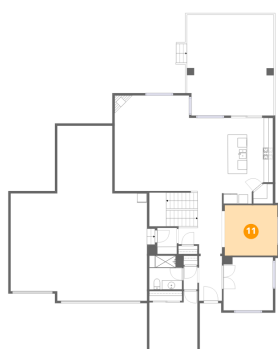
Permitted: Yes

Wet space: No

Addition: No

Conversion: No

11 Floor 2 - Dining Room



Dimensions: 11'5" x 10'11"

Area: 124 sq. ft

Counted as living area: Yes

Heated: Yes

Finished: Yes

Enclosed: Yes

Contiguous: Yes

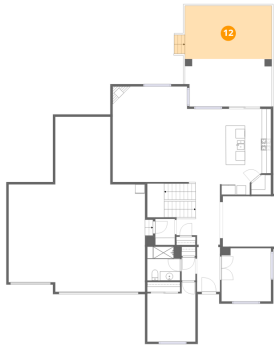
Permitted: Yes

Wet space: No

Addition: No

Conversion: No

12 Floor 2 - Deck



Dimensions: 18'10" x 11'6"
Area: 216 sq. ft
Counted as living area: No

Heated: No
Finished: No
Enclosed: No
Contiguous: Yes
Permitted: Yes
Wet space: No
Addition: No
Conversion: No

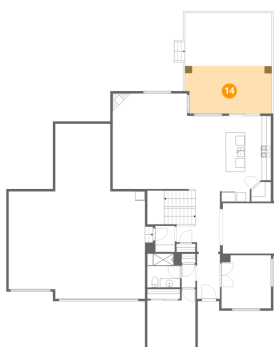
13 Floor 2 - Living Room



Dimensions: 16'3" x 20'8"
Area: 335 sq. ft
Counted as living area: Yes

Heated: Yes
Finished: Yes
Enclosed: Yes
Contiguous: Yes
Permitted: Yes
Wet space: No
Addition: No
Conversion: No

14 Floor 2 - Covered Patio



Dimensions: 18'10" x 10'4"
Area: 194 sq. ft
Counted as living area: No

Heated: No
Finished: No
Enclosed: No
Contiguous: Yes
Permitted: Yes
Wet space: No
Addition: No
Conversion: No

15 Floor 2 - Hall



Dimensions: 3'0" x 5'0"
Area: 15 sq. ft
Counted as living area: Yes

Heated: Yes
Finished: Yes
Enclosed: Yes
Contiguous: Yes
Permitted: Yes
Wet space: No
Addition: No
Conversion: No

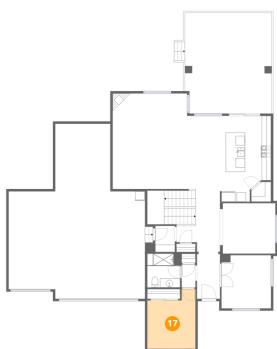
16 Floor 2 - Hall



Dimensions: 4'3" x 5'8"
Area: 24 sq. ft
Counted as living area: Yes

Heated: Yes
Finished: Yes
Enclosed: Yes
Contiguous: Yes
Permitted: Yes
Wet space: No
Addition: No
Conversion: No

17 Floor 2 - Bedroom



Dimensions: 10'5" x 12'11"
Area: 134 sq. ft
Counted as living area: Yes

Heated: Yes
Finished: Yes
Enclosed: Yes
Contiguous: Yes
Permitted: Yes
Wet space: No
Addition: No
Conversion: No

18 Floor 3 - W.I.C.



Dimensions: 5'10" x 6'0"
Area: 35 sq. ft
Counted as living area: Yes

Heated: Yes
Finished: Yes
Enclosed: Yes
Contiguous: Yes
Permitted: Yes
Wet space: No
Addition: No
Conversion: No

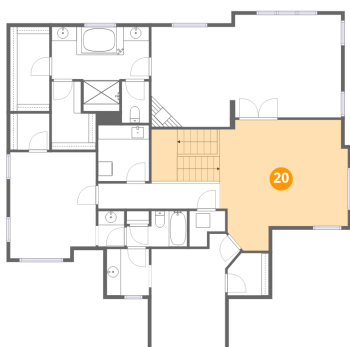
19 Floor 3 - W.I.C.



Dimensions: 5'6" x 11'11"
Area: 66 sq. ft
Counted as living area: Yes

Heated: Yes
Finished: Yes
Enclosed: Yes
Contiguous: Yes
Permitted: Yes
Wet space: No
Addition: No
Conversion: No

20 Floor 3 - Family Room



Dimensions: 18'2" x 18'4"
Area: 334 sq. ft
Counted as living area: Yes

Heated: Yes
Finished: Yes
Enclosed: Yes
Contiguous: Yes
Permitted: Yes
Wet space: No
Addition: No
Conversion: No

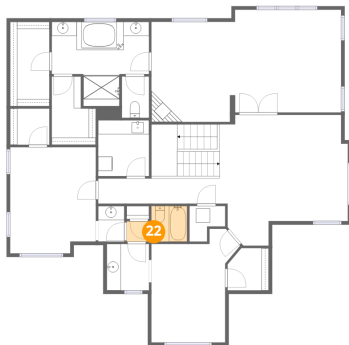
21 Floor 3 - Laundry



Dimensions: 7'2" x 7'11"
Area: 57 sq. ft
Counted as living area: Yes

Heated: Yes
Finished: Yes
Enclosed: Yes
Contiguous: Yes
Permitted: Yes
Wet space: No
Addition: No
Conversion: No

22 Floor 3 - Bath



Dimensions: 8'6" x 5'0"
Area: 43 sq. ft
Counted as living area: Yes

Heated: Yes
Finished: Yes
Enclosed: Yes
Contiguous: Yes
Permitted: Yes
Wet space: Yes
Addition: No
Conversion: No

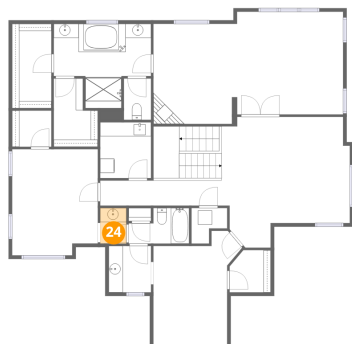
23 Floor 3 - Hall



Dimensions: 17'1" x 3'7"
Area: 61 sq. ft
Counted as living area: Yes

Heated: Yes
Finished: Yes
Enclosed: Yes
Contiguous: Yes
Permitted: Yes
Wet space: No
Addition: No
Conversion: No

24 Floor 3 - Bath



Dimensions: 3'8" x 5'0"
Area: 19 sq. ft
Counted as living area: Yes

Heated: Yes
Finished: Yes
Enclosed: Yes
Contiguous: Yes
Permitted: Yes
Wet space: Yes
Addition: No
Conversion: No

25 Floor 3 - Bath



Dimensions: 6'0" x 6'7"
Area: 39 sq. ft
Counted as living area: Yes

Heated: Yes
Finished: Yes
Enclosed: Yes
Contiguous: Yes
Permitted: Yes
Wet space: Yes
Addition: No
Conversion: No

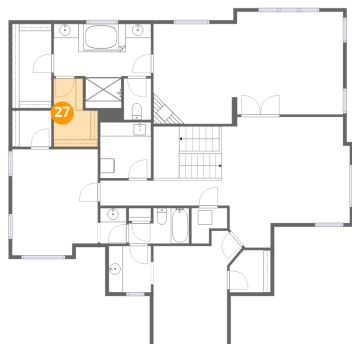
26 Floor 3 - Bath



Dimensions: 3'10" x 5'10"
Area: 22 sq. ft
Counted as living area: Yes

Heated: Yes
Finished: Yes
Enclosed: Yes
Contiguous: Yes
Permitted: Yes
Wet space: Yes
Addition: No
Conversion: No

27 Floor 3 - W.I.C.



Dimensions: 6'3" x 9'8"
Area: 60 sq. ft
Counted as living area: Yes

Heated: Yes
Finished: Yes
Enclosed: Yes
Contiguous: Yes
Permitted: Yes
Wet space: No
Addition: No
Conversion: No

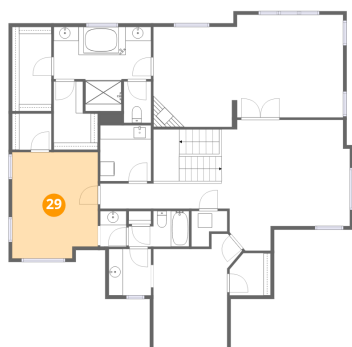
28 Floor 3 - Bedroom



Dimensions: 12'6" x 16'0"
Area: 201 sq. ft
Counted as living area: Yes

Heated: Yes
Finished: Yes
Enclosed: Yes
Contiguous: Yes
Permitted: Yes
Wet space: No
Addition: No
Conversion: No

29 Floor 3 - Bedroom



Dimensions: 12'1" x 15'0"
Area: 181 sq. ft
Counted as living area: Yes

Heated: Yes
Finished: Yes
Enclosed: Yes
Contiguous: Yes
Permitted: Yes
Wet space: No
Addition: No
Conversion: No

30 Floor 3 - Primary Bath



Dimensions: 13'9" x 11'11"
Area: 164 sq. ft
Counted as living area: Yes

Heated: Yes
Finished: Yes
Enclosed: Yes
Contiguous: Yes
Permitted: Yes
Wet space: Yes
Addition: No
Conversion: No

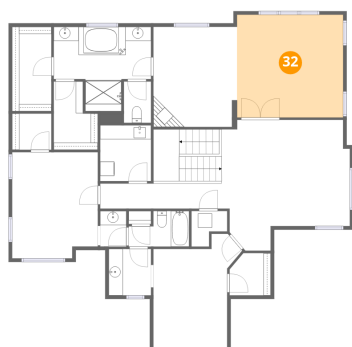
31 Floor 3 - W.I.C.



Dimensions: 5'6" x 5'1"
Area: 28 sq. ft
Counted as living area: Yes

Heated: Yes
Finished: Yes
Enclosed: Yes
Contiguous: Yes
Permitted: Yes
Wet space: No
Addition: No
Conversion: No

32 Floor 3 - Primary Bedroom



Dimensions: 15'0" x 14'6"
Area: 217 sq. ft
Counted as living area: Yes

Heated: Yes
Finished: Yes
Enclosed: Yes
Contiguous: Yes
Permitted: Yes
Wet space: No
Addition: No
Conversion: No

33 Floor 3 - Sitting Room



Dimensions: 11'10" x 14'2"
Area: 167 sq. ft
Counted as living area: Yes

Heated: Yes
Finished: Yes
Enclosed: Yes
Contiguous: Yes
Permitted: Yes
Wet space: No
Addition: No
Conversion: No