

Home data report

9114 Cardwell St, Livonia, MI, US



Total Area: 2075 sq. ft

Basement: 0 sq. ft, 1st Floor: 813 sq. ft, 2nd Floor: 1262 sq. ft

Excluded: Basement 811 sq. ft, Garage 560 sq. ft, Low ceiling 79 sq. ft, Walls: 248 sq. ft

Property summary

 **3** Floors

 **4** Bedrooms

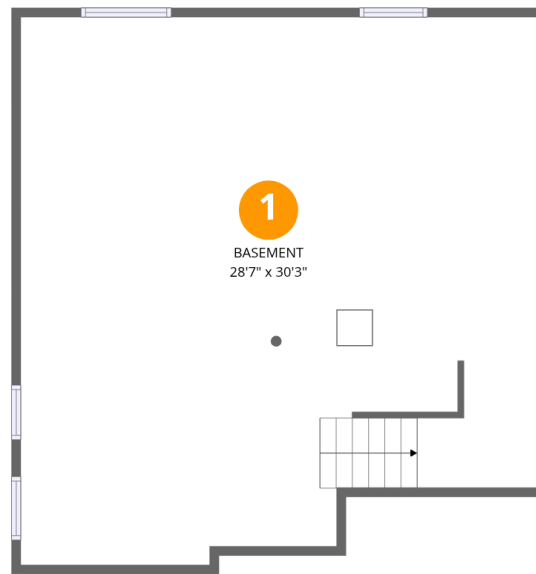
 **2** Bathrooms

Home data report

9114 Cardwell St, Livonia, MI, US

 **1**
Half baths

 **1**
Garages



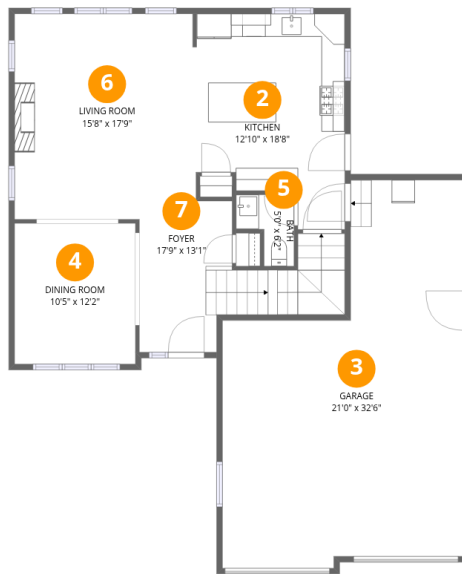
Room dimensions

Floor 1 Below grade

Total: 0 sqft

Excluded: 811 sqft

#		Dimensions	sqft	Counted as living area
1	Basement	28'7" x 30'3"	865 sq. ft	No



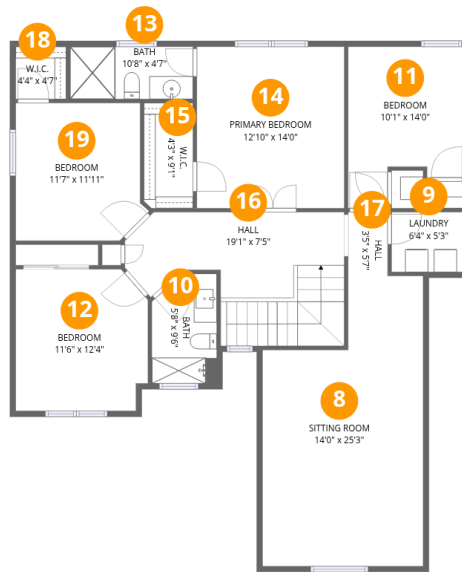
Room dimensions

Floor 2

Total:813sqft

Excluded: 560sqft

#		Dimensions	sqft	Counted as living area
2	Kitchen	12'10" x 18'8"	240 sq. ft	Yes
3	Garage	21'0" x 32'6"	683 sq. ft	No
4	Dining Room	10'5" x 12'2"	127 sq. ft	Yes
5	Bath	5'0" x 6'2"	31 sq. ft	Yes
6	Living Room	15'8" x 17'9"	279 sq. ft	Yes
7	Foyer	17'9" x 13'1"	232 sq. ft	Yes



Room dimensions

Floor 3

Total: 1262 sqft Excluded: 79 sqft

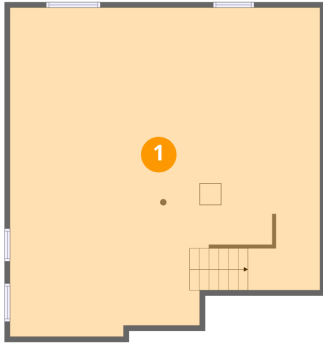
#		Dimensions	sqft	Counted as living area
8	Sitting Room	14'0" x 25'3"	352 sq. ft	Yes
9	Laundry	6'4" x 5'3"	33 sq. ft	Yes
10	Bath	5'8" x 9'6"	54 sq. ft	Yes
11	Bedroom	10'1" x 14'0"	142 sq. ft	Yes
12	Bedroom	11'6" x 12'4"	141 sq. ft	Yes
13	Bath	10'8" x 4'7"	49 sq. ft	Yes
14	Primary Bedroom	12'10" x 14'0"	180 sq. ft	Yes
15	W.I.C.	4'3" x 9'1"	39 sq. ft	Yes
16	Hall	19'1" x 7'5"	142 sq. ft	Yes
17	Hall	3'5" x 5'7"	19 sq. ft	Yes
18	W.I.C.	4'4" x 4'7"	20 sq. ft	Yes

Home data report

9114 Cardwell St,Livonia,MI,US

#		Dimensions	sqft	Counted as living area
19	Bedroom	11'7" x 11'11"	138 sq. ft	Yes

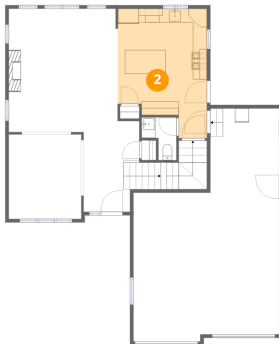
1 Floor 1 - Basement



Dimensions: 28'7" x 30'3"
Area: 865 sq. ft
Counted as living area: No

Heated: Yes
Finished: No
Enclosed: Yes
Contiguous: Yes
Permitted: Yes
Wet space: No
Addition: No
Conversion: No

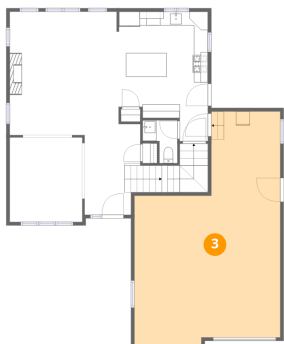
2 Floor 2 - Kitchen



Dimensions: 12'10" x 18'8"
Area: 240 sq. ft
Counted as living area: Yes

Heated: Yes
Finished: Yes
Enclosed: Yes
Contiguous: Yes
Permitted: Yes
Wet space: No
Addition: No
Conversion: No

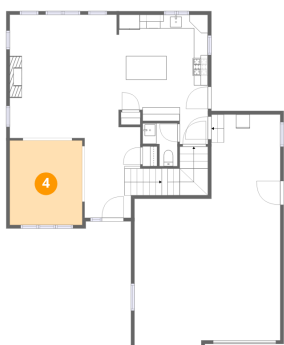
3 Floor 2 - Garage



Dimensions: 21'0" x 32'6"
Area: 683 sq. ft
Counted as living area: No

Heated: No
Finished: No
Enclosed: Yes
Contiguous: Yes
Permitted: Yes
Wet space: No
Addition: No
Conversion: No

4 Floor 2 - Dining Room



Dimensions: 10'5" x 12'2"
Area: 127 sq. ft
Counted as living area: Yes

Heated: Yes
Finished: Yes
Enclosed: Yes
Contiguous: Yes
Permitted: Yes
Wet space: No
Addition: No
Conversion: No

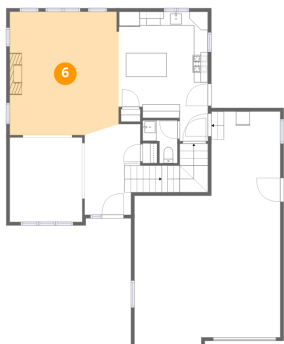
5 Floor 2 - Bath



Dimensions: 5'0" x 6'2"
Area: 31 sq. ft
Counted as living area: Yes

Heated: Yes
Finished: Yes
Enclosed: Yes
Contiguous: Yes
Permitted: Yes
Wet space: Yes
Addition: No
Conversion: No

6 Floor 2 - Living Room



Dimensions: 15'8" x 17'9"
Area: 279 sq. ft
Counted as living area: Yes

Heated: Yes
Finished: Yes
Enclosed: Yes
Contiguous: Yes
Permitted: Yes
Wet space: No
Addition: No
Conversion: No

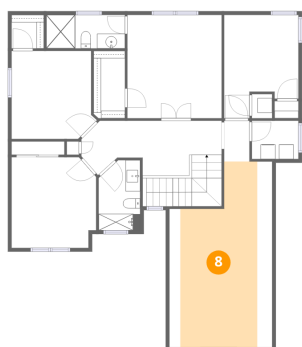
7 Floor 2 - Foyer



Dimensions: 17'9" x 13'1"
Area: 232 sq. ft
Counted as living area: Yes

Heated: Yes
Finished: Yes
Enclosed: Yes
Contiguous: Yes
Permitted: Yes
Wet space: No
Addition: No
Conversion: No

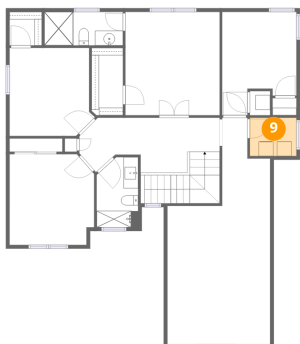
8 Floor 3 - Sitting Room



Dimensions: 14'0" x 25'3"
Area: 352 sq. ft
Counted as living area: Yes

Heated: Yes
Finished: Yes
Enclosed: Yes
Contiguous: Yes
Permitted: Yes
Wet space: No
Addition: No
Conversion: No

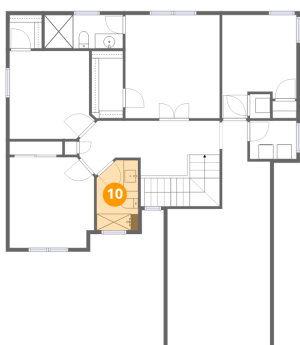
9 Floor 3 - Laundry



Dimensions: 6'4" x 5'3"
Area: 33 sq. ft
Counted as living area: Yes

Heated: Yes
Finished: Yes
Enclosed: Yes
Contiguous: Yes
Permitted: Yes
Wet space: No
Addition: No
Conversion: No

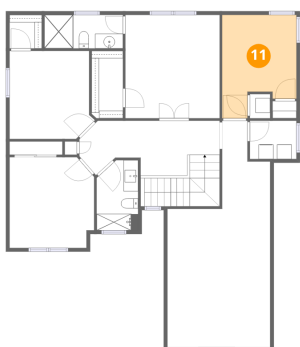
10 Floor 3 - Bath



Dimensions: 5'8" x 9'6"
Area: 54 sq. ft
Counted as living area: Yes

Heated: Yes
Finished: Yes
Enclosed: Yes
Contiguous: Yes
Permitted: Yes
Wet space: Yes
Addition: No
Conversion: No

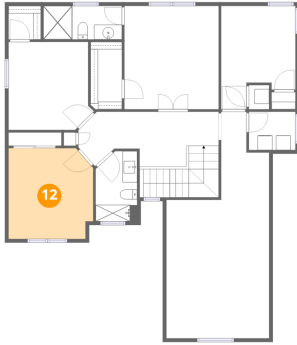
11 Floor 3 - Bedroom



Dimensions: 10'1" x 14'0"
Area: 142 sq. ft
Counted as living area: Yes

Heated: Yes
Finished: Yes
Enclosed: Yes
Contiguous: Yes
Permitted: Yes
Wet space: No
Addition: No
Conversion: No

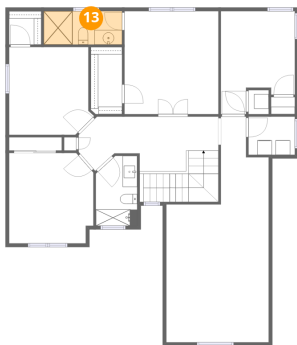
12 Floor 3 - Bedroom



Dimensions: 11'6" x 12'4"
Area: 141 sq. ft
Counted as living area: Yes

Heated: Yes
Finished: Yes
Enclosed: Yes
Contiguous: Yes
Permitted: Yes
Wet space: No
Addition: No
Conversion: No

13 Floor 3 - Bath



Dimensions: 10'8" x 4'7"
Area: 49 sq. ft
Counted as living area: Yes

Heated: Yes
Finished: Yes
Enclosed: Yes
Contiguous: Yes
Permitted: Yes
Wet space: Yes
Addition: No
Conversion: No

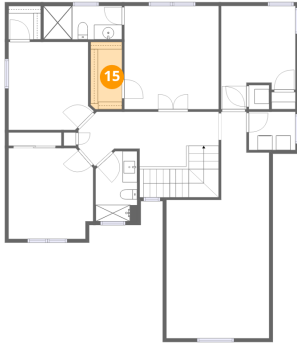
14 Floor 3 - Primary Bedroom



Dimensions: 12'10" x 14'0"
Area: 180 sq. ft
Counted as living area: Yes

Heated: Yes
Finished: Yes
Enclosed: Yes
Contiguous: Yes
Permitted: Yes
Wet space: No
Addition: No
Conversion: No

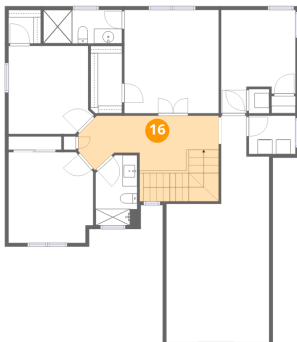
15 Floor 3 - W.I.C.



Dimensions: 4'3" x 9'1"
Area: 39 sq. ft
Counted as living area: Yes

Heated: Yes
Finished: Yes
Enclosed: Yes
Contiguous: Yes
Permitted: Yes
Wet space: No
Addition: No
Conversion: No

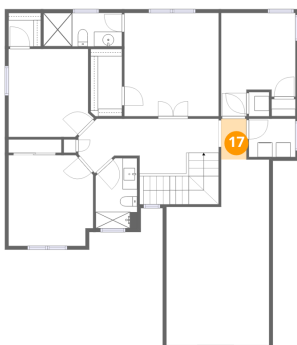
16 Floor 3 - Hall



Dimensions: 19'1" x 7'5"
Area: 142 sq. ft
Counted as living area: Yes

Heated: Yes
Finished: Yes
Enclosed: Yes
Contiguous: Yes
Permitted: Yes
Wet space: No
Addition: No
Conversion: No

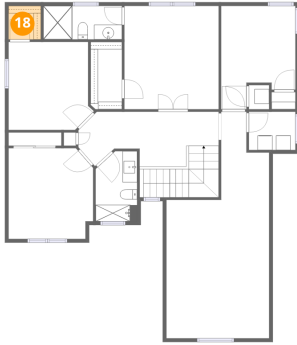
17 Floor 3 - Hall



Dimensions: 3'5" x 5'7"
Area: 19 sq. ft
Counted as living area: Yes

Heated: Yes
Finished: Yes
Enclosed: Yes
Contiguous: Yes
Permitted: Yes
Wet space: No
Addition: No
Conversion: No

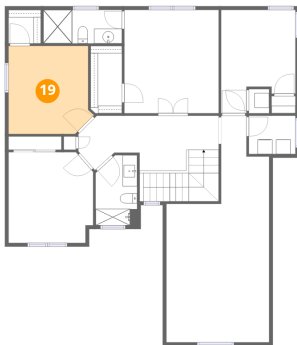
18 Floor 3 - W.I.C.



Dimensions: 4'4" x 4'7"
Area: 20 sq. ft
Counted as living area: Yes

Heated: Yes
Finished: Yes
Enclosed: Yes
Contiguous: Yes
Permitted: Yes
Wet space: No
Addition: No
Conversion: No

19 Floor 3 - Bedroom



Dimensions: 11'7" x 11'11"
Area: 138 sq. ft
Counted as living area: Yes

Heated: Yes
Finished: Yes
Enclosed: Yes
Contiguous: Yes
Permitted: Yes
Wet space: No
Addition: No
Conversion: No