

Home data report

3034 Tree Top Lane, Roanoke, Virginia 24018, United States



Total Area: 2722 sq. ft

Below Ground: 841 sq. ft, 1st Floor: 1033 sq. ft, 2nd Floor: 848 sq. ft

Excluded: Room 178 sq. ft, Basement 373 sq. ft, Fireplace 48 sq. ft, Garage 551 sq. ft, Walls: 238 sq. ft

Property summary

 **3** Floors

 **3** Bedrooms

 **2** Bathrooms

Home data report

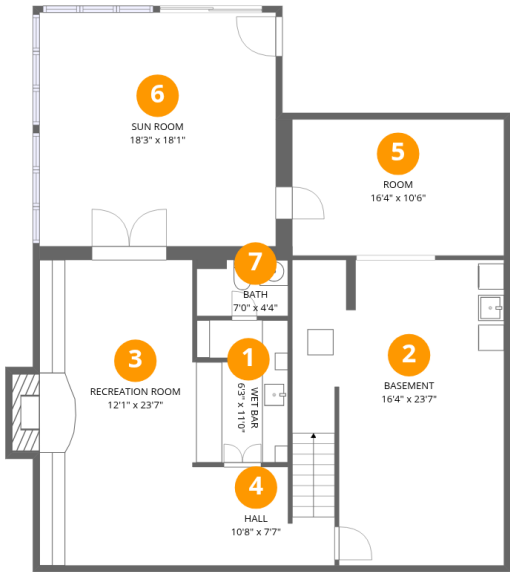
3034 Tree Top Lane, Roanoke, Virginia 24018, United States



2
Half baths



1
Garages



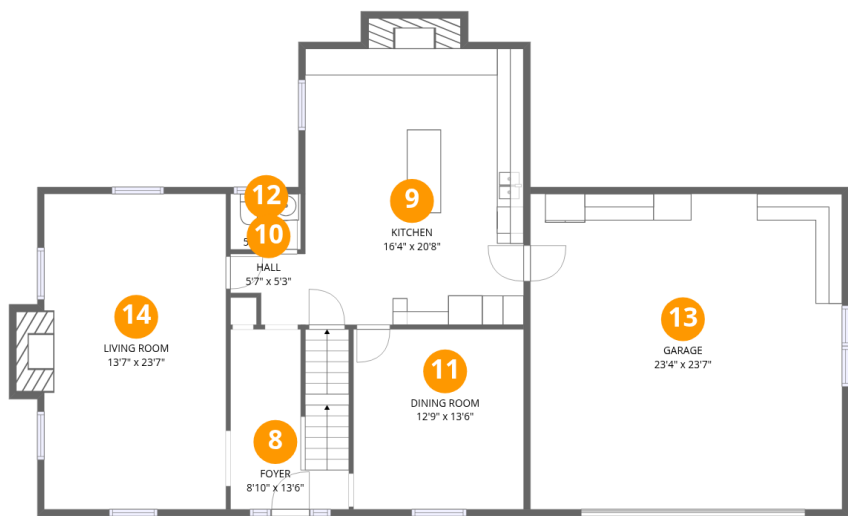
Room dimensions

Floor 1 Below grade Total:841sqft Excluded: 566sqft

#		Dimensions	sqft	Counted as living area
1	Wet Bar	6'3" x 11'0"	77 sq. ft	Yes
2	Basement	16'4" x 23'7"	367 sq. ft	No
3	Recreation Room	12'1" x 23'7"	297 sq. ft	Yes
4	Hall	10'8" x 7'7"	67 sq. ft	Yes
5	Room	16'4" x 10'6"	172 sq. ft	No
6	Sun Room	18'3" x 18'1"	330 sq. ft	Yes
7	Bath	7'0" x 4'4"	31 sq. ft	Yes

Home data report

3034 Tree Top Lane, Roanoke, Virginia 24018, United States



Room dimensions

Floor 2

Total:1033sqft Excluded: 584sqft

#		Dimensions	sqft	Counted as living area
8	Foyer	8'10" x 13'6"	117 sq. ft	Yes
9	Kitchen	16'4" x 20'8"	354 sq. ft	Yes
10	Hall	5'7" x 5'3"	24 sq. ft	Yes
11	Dining Room	12'9" x 13'6"	172 sq. ft	Yes
12	Bath	5'3" x 4'2"	22 sq. ft	Yes
13	Garage	23'4" x 23'7"	551 sq. ft	No
14	Living Room	13'7" x 23'7"	335 sq. ft	Yes

Home data report

3034 Tree Top Lane, Roanoke, Virginia 24018, United States

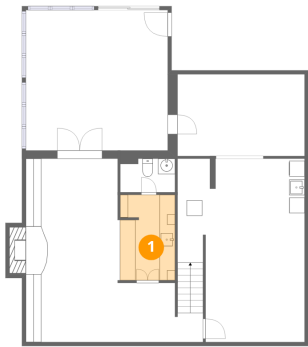


Room dimensions

Floor 3 Total:848sqft Excluded: 0sqft

#		Dimensions	sqft	Counted as living area
15	Bath	5'2" x 8'0"	42 sq. ft	Yes
16	Hall	8'1" x 6'0"	36 sq. ft	Yes
17	Room	6'1" x 8'0"	46 sq. ft	Yes
18	Primary Bedroom	15'9" x 15'3"	214 sq. ft	Yes
19	Bedroom	12'9" x 13'6"	156 sq. ft	Yes
20	Bath	9'1" x 5'7"	51 sq. ft	Yes
21	Bedroom	10'4" x 11'5"	111 sq. ft	Yes
22	Hall	10'4" x 9'3"	86 sq. ft	Yes

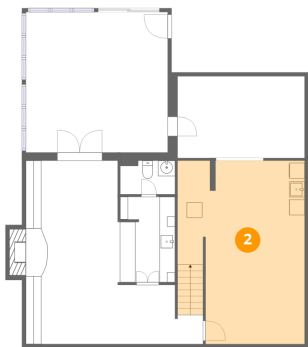
1 Floor 1 - Wet Bar



Dimensions: 6'3" x 11'0"
Area: 77 sq. ft
Counted as living area: Yes

Heated: Yes
Finished: Yes
Enclosed: Yes
Contiguous: Yes
Permitted: Yes
Wet space: No
Addition: No
Conversion: No

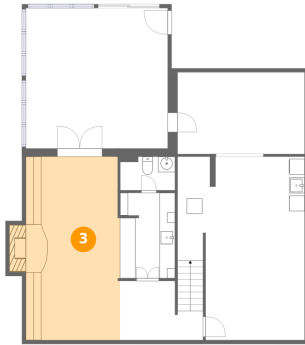
2 Floor 1 - Basement



Dimensions: 16'4" x 23'7"
Area: 367 sq. ft
Counted as living area: No

Heated: Yes
Finished: No
Enclosed: Yes
Contiguous: Yes
Permitted: Yes
Wet space: No
Addition: No
Conversion: No

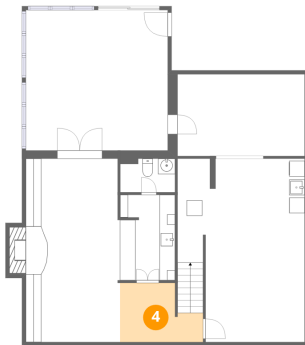
3 Floor 1 - Recreation Room



Dimensions: 12'1" x 23'7"
Area: 297 sq. ft
Counted as living area: Yes

Heated: Yes
Finished: Yes
Enclosed: Yes
Contiguous: Yes
Permitted: Yes
Wet space: No
Addition: No
Conversion: No

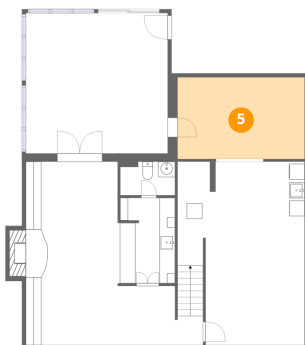
4 Floor 1 - Hall



Dimensions: 10'8" x 7'7"
Area: 67 sq. ft
Counted as living area: Yes

Heated: Yes
Finished: Yes
Enclosed: Yes
Contiguous: Yes
Permitted: Yes
Wet space: No
Addition: No
Conversion: No

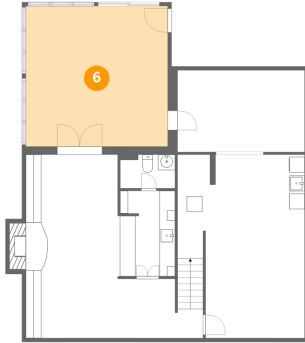
5 Floor 1 - Room



Dimensions: 16'4" x 10'6"
Area: 172 sq. ft
Counted as living area: No

Heated: Yes
Finished: No
Enclosed: Yes
Contiguous: Yes
Permitted: Yes
Wet space: No
Addition: No
Conversion: No

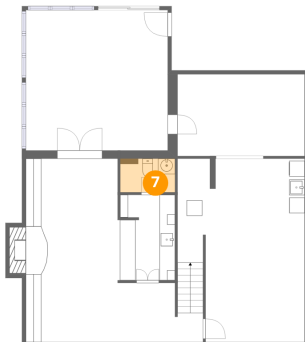
6 Floor 1 - Sun Room



Dimensions: 18'3" x 18'1"
Area: 330 sq. ft
Counted as living area: Yes

Heated: Yes
Finished: Yes
Enclosed: Yes
Contiguous: Yes
Permitted: Yes
Wet space: No
Addition: No
Conversion: No

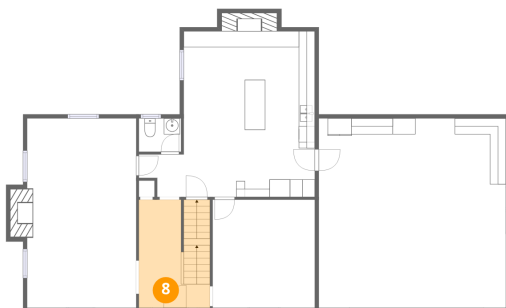
7 Floor 1 - Bath



Dimensions: 7'0" x 4'4"
Area: 31 sq. ft
Counted as living area: Yes

Heated: Yes
Finished: Yes
Enclosed: Yes
Contiguous: Yes
Permitted: Yes
Wet space: Yes
Addition: No
Conversion: No

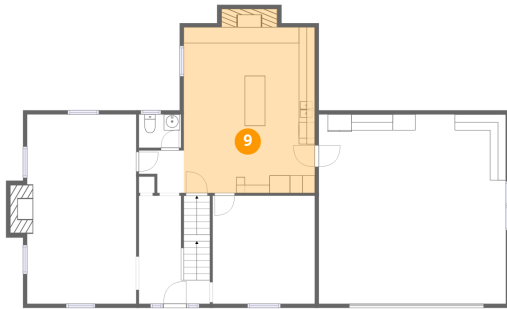
8 Floor 2 - Foyer



Dimensions: 8'10" x 13'6"
Area: 117 sq. ft
Counted as living area: Yes

Heated: Yes
Finished: Yes
Enclosed: Yes
Contiguous: Yes
Permitted: Yes
Wet space: No
Addition: No
Conversion: No

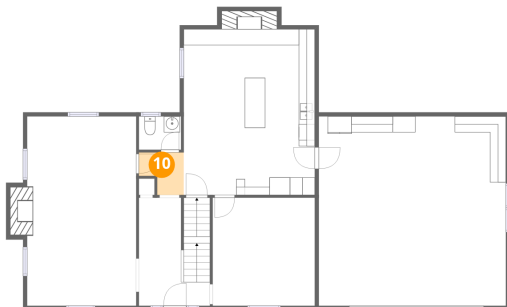
9 Floor 2 - Kitchen



Dimensions: 16'4" x 20'8"
Area: 354 sq. ft
Counted as living area: Yes

Heated: Yes
Finished: Yes
Enclosed: Yes
Contiguous: Yes
Permitted: Yes
Wet space: No
Addition: No
Conversion: No

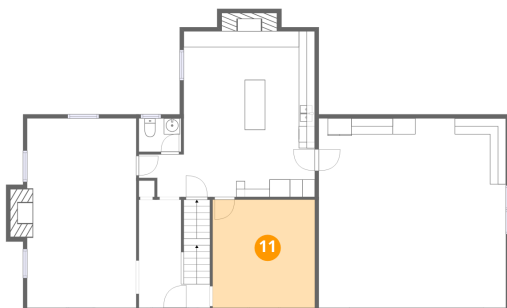
10 Floor 2 - Hall



Dimensions: 5'7" x 5'3"
Area: 24 sq. ft
Counted as living area: Yes

Heated: Yes
Finished: Yes
Enclosed: Yes
Contiguous: Yes
Permitted: Yes
Wet space: No
Addition: No
Conversion: No

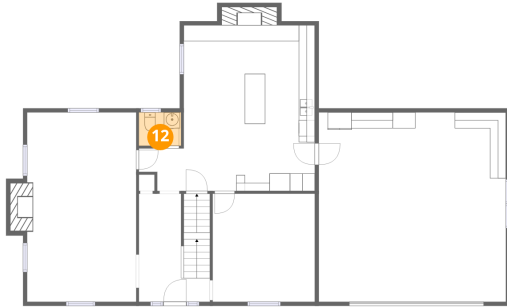
11 Floor 2 - Dining Room



Dimensions: 12'9" x 13'6"
Area: 172 sq. ft
Counted as living area: Yes

Heated: Yes
Finished: Yes
Enclosed: Yes
Contiguous: Yes
Permitted: Yes
Wet space: No
Addition: No
Conversion: No

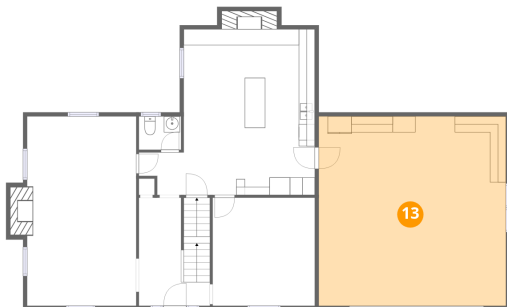
12 Floor 2 - Bath



Dimensions: 5'3" x 4'2"
Area: 22 sq. ft
Counted as living area: Yes

Heated: Yes
Finished: Yes
Enclosed: Yes
Contiguous: Yes
Permitted: Yes
Wet space: Yes
Addition: No
Conversion: No

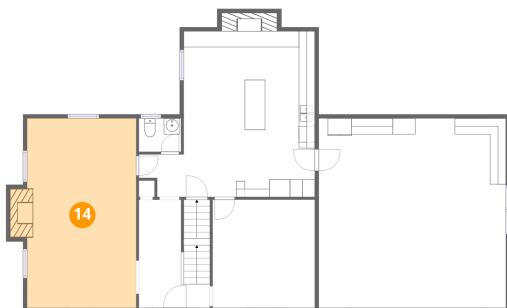
13 Floor 2 - Garage



Dimensions: 23'4" x 23'7"
Area: 551 sq. ft
Counted as living area: No

Heated: No
Finished: No
Enclosed: Yes
Contiguous: Yes
Permitted: Yes
Wet space: No
Addition: No
Conversion: No

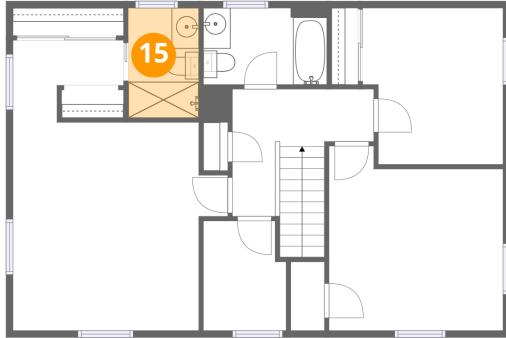
14 Floor 2 - Living Room



Dimensions: 13'7" x 23'7"
Area: 335 sq. ft
Counted as living area: Yes

Heated: Yes
Finished: Yes
Enclosed: Yes
Contiguous: Yes
Permitted: Yes
Wet space: No
Addition: No
Conversion: No

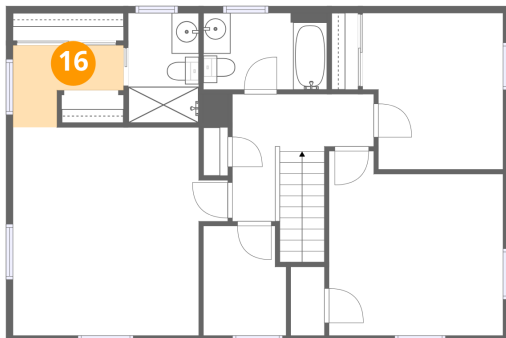
15 Floor 3 - Bath



Dimensions: 5'2" x 8'0"
Area: 42 sq. ft
Counted as living area: Yes

Heated: Yes
Finished: Yes
Enclosed: Yes
Contiguous: Yes
Permitted: Yes
Wet space: Yes
Addition: No
Conversion: No

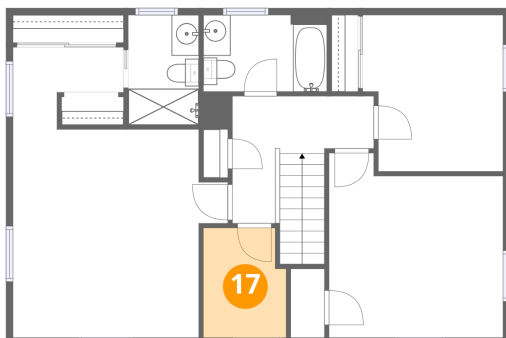
16 Floor 3 - Hall



Dimensions: 8'1" x 6'0"
Area: 36 sq. ft
Counted as living area: Yes

Heated: Yes
Finished: Yes
Enclosed: Yes
Contiguous: Yes
Permitted: Yes
Wet space: No
Addition: No
Conversion: No

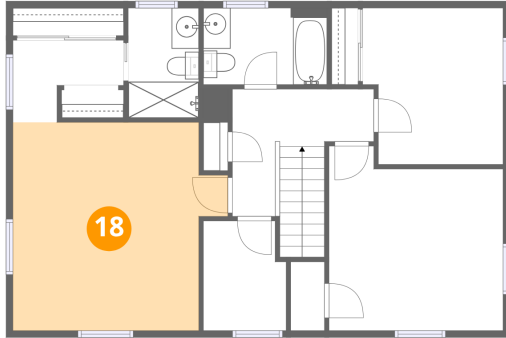
17 Floor 3 - Room



Dimensions: 6'1" x 8'0"
Area: 46 sq. ft
Counted as living area: Yes

Heated: Yes
Finished: Yes
Enclosed: Yes
Contiguous: Yes
Permitted: Yes
Wet space: No
Addition: No
Conversion: No

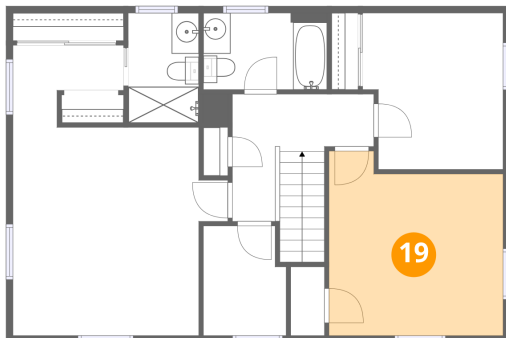
18 Floor 3 - Primary Bedroom



Dimensions: 15'9" x 15'3"
Area: 214 sq. ft
Counted as living area: Yes

Heated: Yes
Finished: Yes
Enclosed: Yes
Contiguous: Yes
Permitted: Yes
Wet space: No
Addition: No
Conversion: No

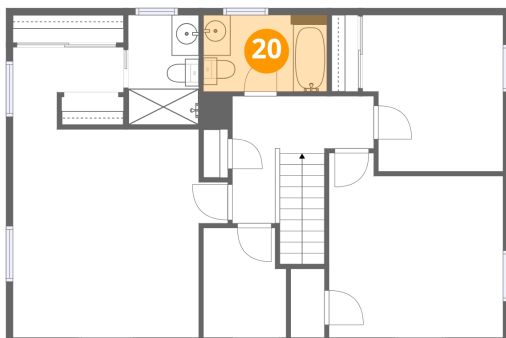
19 Floor 3 - Bedroom



Dimensions: 12'9" x 13'6"
Area: 156 sq. ft
Counted as living area: Yes

Heated: Yes
Finished: Yes
Enclosed: Yes
Contiguous: Yes
Permitted: Yes
Wet space: No
Addition: No
Conversion: No

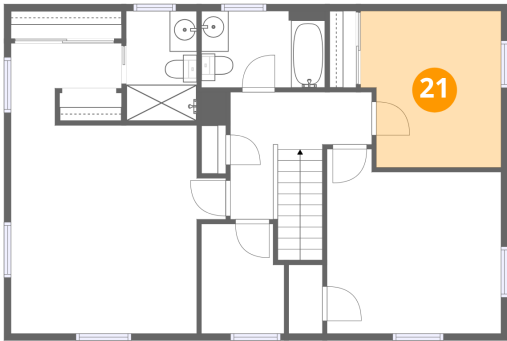
20 Floor 3 - Bath



Dimensions: 9'1" x 5'7"
Area: 51 sq. ft
Counted as living area: Yes

Heated: Yes
Finished: Yes
Enclosed: Yes
Contiguous: Yes
Permitted: Yes
Wet space: Yes
Addition: No
Conversion: No

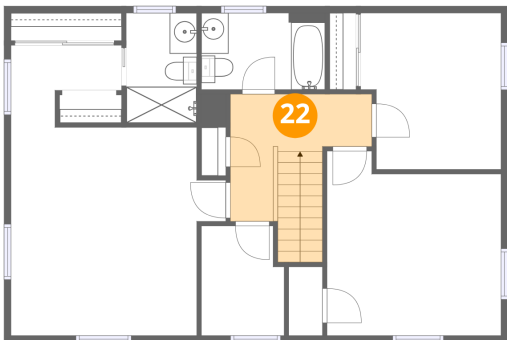
21 Floor 3 - Bedroom



Dimensions: 10'4" x 11'5"
Area: 111 sq. ft
Counted as living area: Yes

Heated: Yes
Finished: Yes
Enclosed: Yes
Contiguous: Yes
Permitted: Yes
Wet space: No
Addition: No
Conversion: No

22 Floor 3 - Hall



Dimensions: 10'4" x 9'3"
Area: 86 sq. ft
Counted as living area: Yes

Heated: Yes
Finished: Yes
Enclosed: Yes
Contiguous: Yes
Permitted: Yes
Wet space: No
Addition: No
Conversion: No