

**Total GLA: 4898 sq. ft | Total: 7165 sq. ft**  
Shed: (Excluded areas 194 sq. ft)  
1st floor: 2899 sq. ft (Excluded areas 1630 sq. ft)  
2nd floor: 1999 sq. ft (Excluded areas 443 sq. ft)

COMPLIES WITH ANSI STANDARDS. APPROXIMATE DIMENSIONS. DRAWING NOT TO SCALE.



**Total GLA: 4898 sq. ft | Total: 7165 sq. ft**  
 Shed: (Excluded areas 194 sq. ft)  
 1st floor: 2899 sq. ft (Excluded areas 1630 sq. ft)  
 2nd floor: 1999 sq. ft (Excluded areas 443 sq. ft)

COMPLIES WITH ANSI STANDARDS. APPROXIMATE DIMENSIONS. DRAWING NOT TO SCALE.

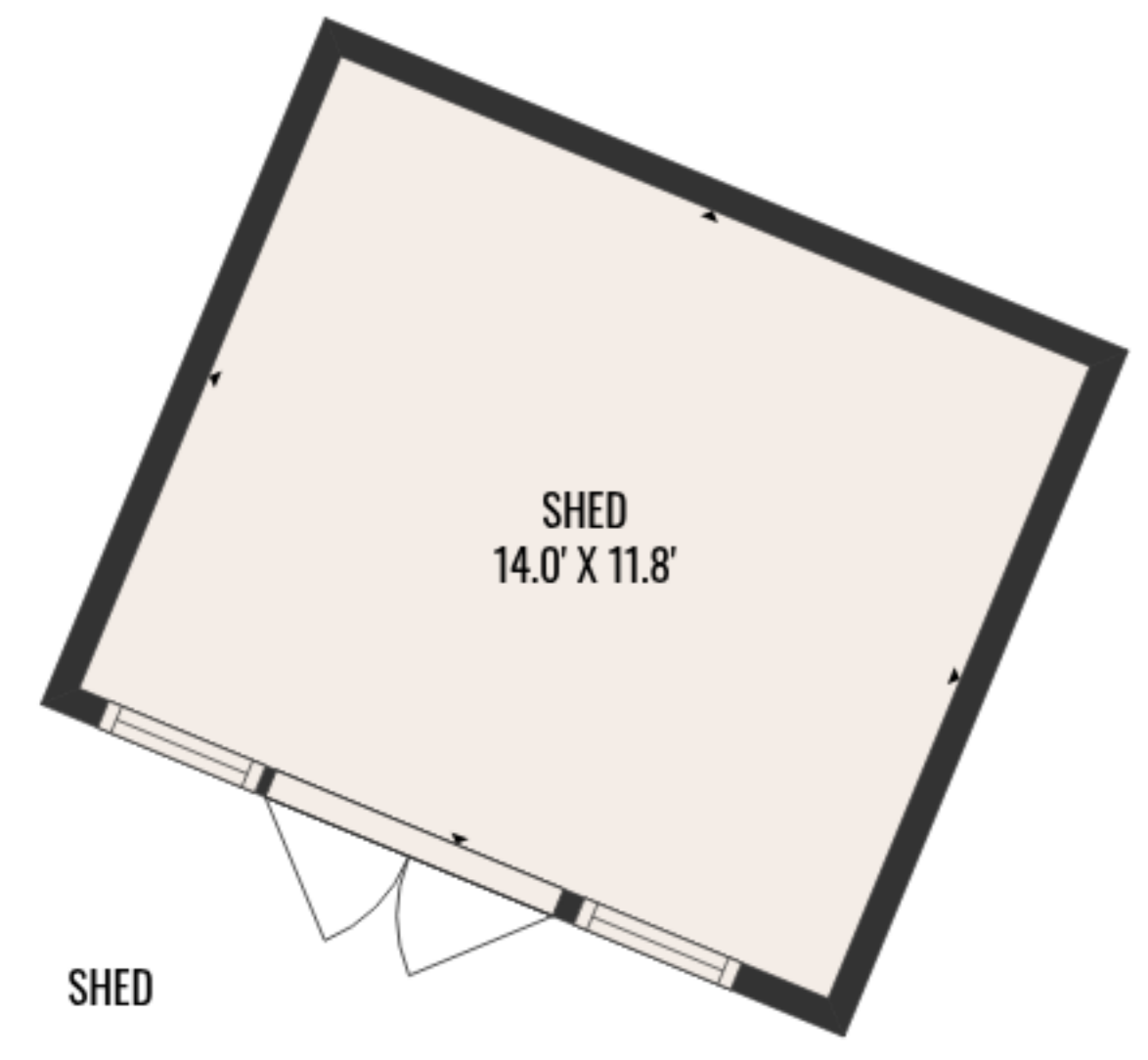


**Total GLA: 4898 sq. ft | Total: 7165 sq. ft**  
 Shed: (Excluded areas 194 sq. ft)  
 1st floor: 2899 sq. ft (Excluded areas 1630 sq. ft)  
 2nd floor: 1999 sq. ft (Excluded areas 443 sq. ft)

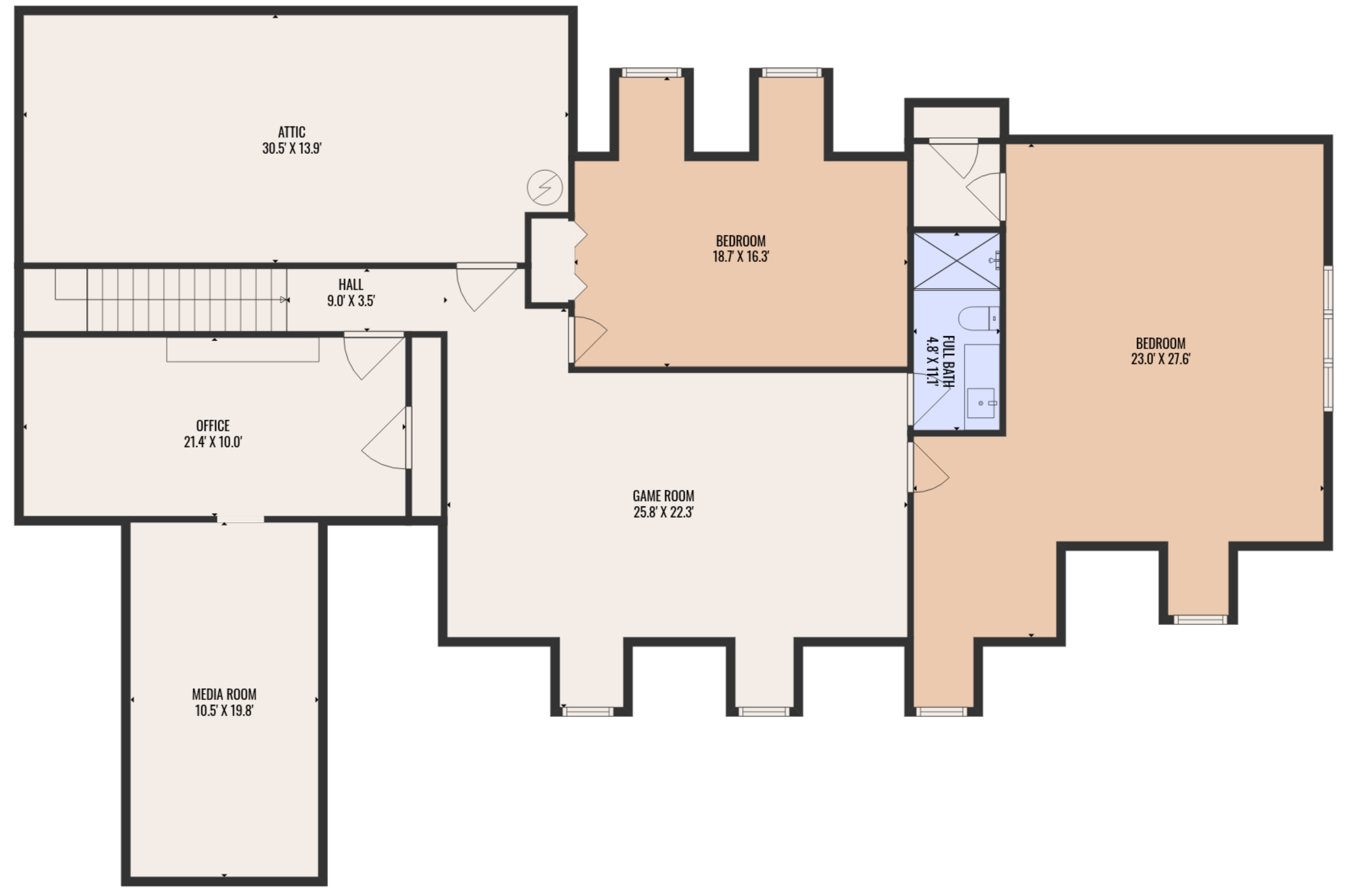
COMPLIES WITH ANSI STANDARDS. APPROXIMATE DIMENSIONS. DRAWING NOT TO SCALE.



1ST FLOOR



SHED



2ND FLOOR

**Total GLA: 4898 sq. ft | Total: 7165 sq. ft**  
 Shed: (Excluded areas 194 sq. ft)  
 1st floor: 2899 sq. ft (Excluded areas 1630 sq. ft)  
 2nd floor: 1999 sq. ft (Excluded areas 443 sq. ft)

COMPLIES WITH ANSI STANDARDS. APPROXIMATE DIMENSIONS. DRAWING NOT TO SCALE.