

Home data report

27653 Azalea Trail, Copeland, Athens, Limestone County, Alabama, United States, 35613



Total Area: 2209 sq. ft

1st Floor: 2209 sq. ft, 2nd Floor: 0 sq. ft, 3rd Floor: 0 sq. ft

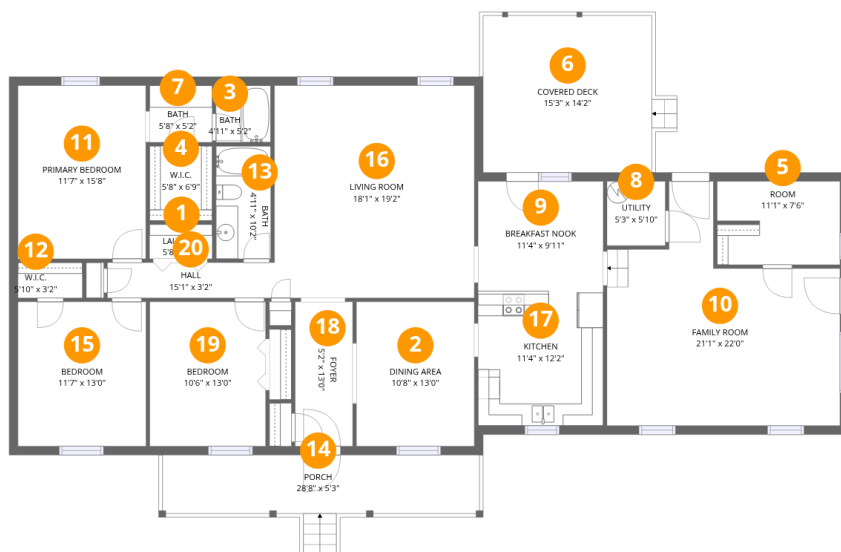
Excluded: Utility 35 sq. ft, Porch 177 sq. ft, Covered deck 216 sq. ft, Garage 642 sq. ft, Attic 357 sq. ft

Property summary



Home data report

27653 Azalea Trail, Copeland, Athens, Limestone County, Alabama, United States, 35613



Room dimensions

Floor 1

Total:2209sqft Excluded: 428sqft

#		Dimensions	sqft	Counted as living area
1	Laundry	5'8" x 3'1"	18 sq. ft	Yes
2	Dining Area	10'8" x 13'0"	139 sq. ft	Yes
3	Bath	4'11" x 5'2"	25 sq. ft	Yes
4	W.I.C.	5'8" x 6'9"	38 sq. ft	Yes
5	Room	11'1" x 7'6"	84 sq. ft	Yes
6	Covered Deck	15'3" x 14'2"	216 sq. ft	No
7	Bath	5'8" x 5'2"	29 sq. ft	Yes
8	Utility	5'3" x 5'10"	31 sq. ft	No
9	Breakfast Nook	11'4" x 9'11"	112 sq. ft	Yes
10	Family Room	21'1" x 22'0"	464 sq. ft	Yes
11	Primary Bedroom	11'7" x 15'8"	181 sq. ft	Yes

Home data report

**27653 Azalea Trail, Copeland, Athens, Limestone County,
Alabama, United States, 35613**

#		Dimensions	sqft	Counted as living area
12	W.I.C.	5'10" x 3'2"	19 sq. ft	Yes
13	Bath	4'11" x 10'2"	50 sq. ft	Yes
14	Porch	28'8" x 5'3"	150 sq. ft	No
15	Bedroom	11'7" x 13'0"	151 sq. ft	Yes
16	Living Room	18'1" x 19'2"	347 sq. ft	Yes
17	Kitchen	11'4" x 12'2"	138 sq. ft	Yes
18	Foyer	5'2" x 13'0"	68 sq. ft	Yes
19	Bedroom	10'6" x 13'0"	137 sq. ft	Yes
20	Hall	15'1" x 3'2"	48 sq. ft	Yes

Home data report

27653 Azalea Trail, Copeland, Athens, Limestone County, Alabama, United States, 35613



Room dimensions

Floor 2

Total:0sqft

Excluded: 642sqft

#		Dimensions	sqft	Counted as living area
21	Garage	21'7" x 26'0"	563 sq. ft	No

Home data report

27653 Azalea Trail, Copeland, Athens, Limestone County, Alabama, United States, 35613



Room dimensions

Floor 3

Total:0sqft

Excluded: 357sqft

#		Dimensions	sqft	Counted as living area
22	Attic	11'4" x 26'0"	295 sq. ft	No

27653 Azalea Trail, Copeland, Athens, Limestone County,
Alabama, United States, 35613

1 Floor 1 - Laundry



Dimensions: 5'8" x 3'1"
Area: 18 sq. ft
Counted as living area: Yes

Heated: Yes
Finished: Yes
Enclosed: Yes
Contiguous: Yes
Permitted: Yes
Wet space: No
Addition: No
Conversion: No

2 Floor 1 - Dining Area



Dimensions: 10'8" x 13'0"
Area: 139 sq. ft
Counted as living area: Yes

Heated: Yes
Finished: Yes
Enclosed: Yes
Contiguous: Yes
Permitted: Yes
Wet space: No
Addition: No
Conversion: No

3 Floor 1 - Bath



Dimensions: 4'11" x 5'2"
Area: 25 sq. ft
Counted as living area: Yes

Heated: Yes
Finished: Yes
Enclosed: Yes
Contiguous: Yes
Permitted: Yes
Wet space: Yes
Addition: No
Conversion: No

4 Floor 1 - W.I.C.



Dimensions: 5'8" x 6'9"
Area: 38 sq. ft
Counted as living area: Yes

Heated: Yes
Finished: Yes
Enclosed: Yes
Contiguous: Yes
Permitted: Yes
Wet space: No
Addition: No
Conversion: No

5 Floor 1 - Room

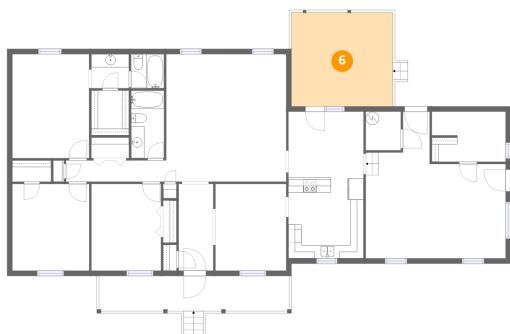


Dimensions: 11'1" x 7'6"
Area: 84 sq. ft
Counted as living area: Yes

Heated: Yes
Finished: Yes
Enclosed: Yes
Contiguous: Yes
Permitted: Yes
Wet space: No
Addition: No
Conversion: No

27653 Azalea Trail, Copeland, Athens, Limestone County,
Alabama, United States, 35613

6 Floor 1 - Covered Deck



Dimensions: 15'3" x 14'2"
Area: 216 sq. ft
Counted as living area: No

Heated: No
Finished: No
Enclosed: No
Contiguous: Yes
Permitted: Yes
Wet space: No
Addition: No
Conversion: No

7 Floor 1 - Bath



Dimensions: 5'8" x 5'2"
Area: 29 sq. ft
Counted as living area: Yes

Heated: Yes
Finished: Yes
Enclosed: Yes
Contiguous: Yes
Permitted: Yes
Wet space: Yes
Addition: No
Conversion: No

8 Floor 1 - Utility

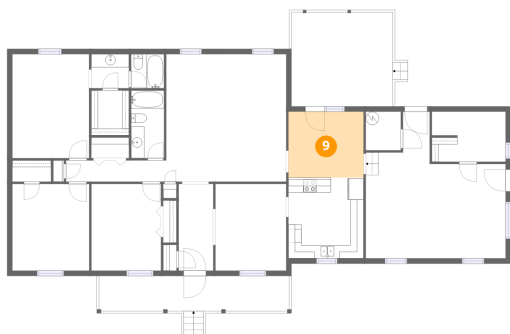


Dimensions: 5'3" x 5'10"
Area: 31 sq. ft
Counted as living area: No

Heated: Yes
Finished: No
Enclosed: Yes
Contiguous: Yes
Permitted: Yes
Wet space: No
Addition: No
Conversion: No

27653 Azalea Trail, Copeland, Athens, Limestone County,
Alabama, United States, 35613

9 Floor 1 - Breakfast Nook



Dimensions: 11'4" x 9'11"
Area: 112 sq. ft
Counted as living area: Yes

Heated: Yes
Finished: Yes
Enclosed: Yes
Contiguous: Yes
Permitted: Yes
Wet space: No
Addition: No
Conversion: No

10 Floor 1 - Family Room



Dimensions: 21'1" x 22'0"
Area: 464 sq. ft
Counted as living area: Yes

Heated: Yes
Finished: Yes
Enclosed: Yes
Contiguous: Yes
Permitted: Yes
Wet space: No
Addition: No
Conversion: No

11 Floor 1 - Primary Bedroom



Dimensions: 11'7" x 15'8"
Area: 181 sq. ft
Counted as living area: Yes

Heated: Yes
Finished: Yes
Enclosed: Yes
Contiguous: Yes
Permitted: Yes
Wet space: No
Addition: No
Conversion: No

27653 Azalea Trail, Copeland, Athens, Limestone County,
Alabama, United States, 35613

12 Floor 1 - W.I.C.



Dimensions: 5'10" x 3'2"
Area: 19 sq. ft
Counted as living area: Yes

Heated: Yes
Finished: Yes
Enclosed: Yes
Contiguous: Yes
Permitted: Yes
Wet space: No
Addition: No
Conversion: No

13 Floor 1 - Bath



Dimensions: 4'11" x 10'2"
Area: 50 sq. ft
Counted as living area: Yes

Heated: Yes
Finished: Yes
Enclosed: Yes
Contiguous: Yes
Permitted: Yes
Wet space: Yes
Addition: No
Conversion: No

14 Floor 1 - Porch



Dimensions: 28'8" x 5'3"
Area: 150 sq. ft
Counted as living area: No

Heated: No
Finished: No
Enclosed: No
Contiguous: Yes
Permitted: Yes
Wet space: No
Addition: No
Conversion: No

27653 Azalea Trail, Copeland, Athens, Limestone County,
Alabama, United States, 35613

15 Floor 1 - Bedroom



Dimensions: 11'7" x 13'0"
Area: 151 sq. ft
Counted as living area: Yes

Heated: Yes
Finished: Yes
Enclosed: Yes
Contiguous: Yes
Permitted: Yes
Wet space: No
Addition: No
Conversion: No

16 Floor 1 - Living Room



Dimensions: 18'1" x 19'2"
Area: 347 sq. ft
Counted as living area: Yes

Heated: Yes
Finished: Yes
Enclosed: Yes
Contiguous: Yes
Permitted: Yes
Wet space: No
Addition: No
Conversion: No

17 Floor 1 - Kitchen



Dimensions: 11'4" x 12'2"
Area: 138 sq. ft
Counted as living area: Yes

Heated: Yes
Finished: Yes
Enclosed: Yes
Contiguous: Yes
Permitted: Yes
Wet space: No
Addition: No
Conversion: No

27653 Azalea Trail, Copeland, Athens, Limestone County,
Alabama, United States, 35613

18 Floor 1 - Foyer



Dimensions: 5'2" x 13'0"
Area: 68 sq. ft
Counted as living area: Yes

Heated: Yes
Finished: Yes
Enclosed: Yes
Contiguous: Yes
Permitted: Yes
Wet space: No
Addition: No
Conversion: No

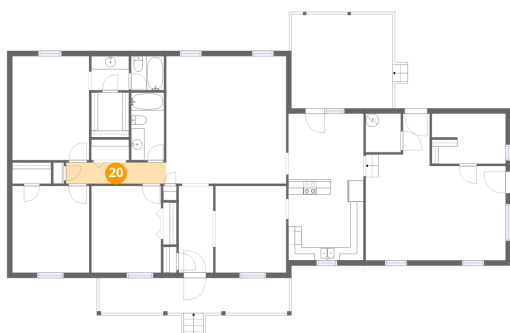
19 Floor 1 - Bedroom



Dimensions: 10'6" x 13'0"
Area: 137 sq. ft
Counted as living area: Yes

Heated: Yes
Finished: Yes
Enclosed: Yes
Contiguous: Yes
Permitted: Yes
Wet space: No
Addition: No
Conversion: No

20 Floor 1 - Hall

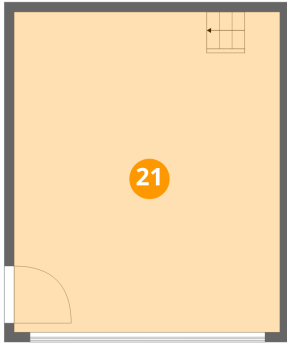


Dimensions: 15'1" x 3'2"
Area: 48 sq. ft
Counted as living area: Yes

Heated: Yes
Finished: Yes
Enclosed: Yes
Contiguous: Yes
Permitted: Yes
Wet space: No
Addition: No
Conversion: No

27653 Azalea Trail, Copeland, Athens, Limestone County,
Alabama, United States, 35613

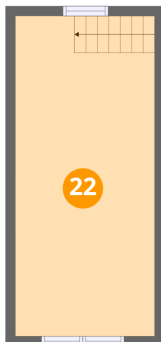
21 Floor 2 - Garage



Dimensions: 21'7" x 26'0"
Area: 563 sq. ft
Counted as living area: No

Heated: No
Finished: No
Enclosed: Yes
Contiguous: Yes
Permitted: Yes
Wet space: No
Addition: No
Conversion: No

22 Floor 3 - Attic



Dimensions: 11'4" x 26'0"
Area: 295 sq. ft
Counted as living area: No

Heated: No
Finished: No
Enclosed: Yes
Contiguous: Yes
Permitted: Yes
Wet space: No
Addition: No
Conversion: No