

110 PIUS STREET SOUTH SIDE, PENNSYLVANIA

*An opportunity to own a home where legacy is preserved,
beauty is redefined, and history is given new life.*



Suspended high in the sky and nestled in the South Side Slopes this prestigiously perched sanctuary offers unobstructed views in every direction. From the iconic downtown skyline to the West Hills, North Hills and East End of Pittsburgh there is an ever-changing panorama. Spanning three levels of graceful interior living area and four distinct outdoor spaces, this exclusive residence redefines scale and sophistication. Old world craftsmanship unfolds into modern conveniences highlighting soaring ceilings, exquisite moldings, expansive archways, transom topped doorways and rustic hardwoods rich with Victorian architectural appointments.

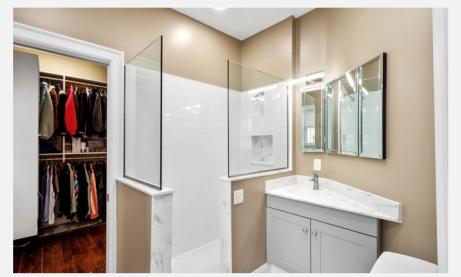
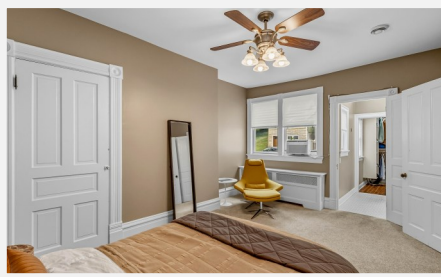
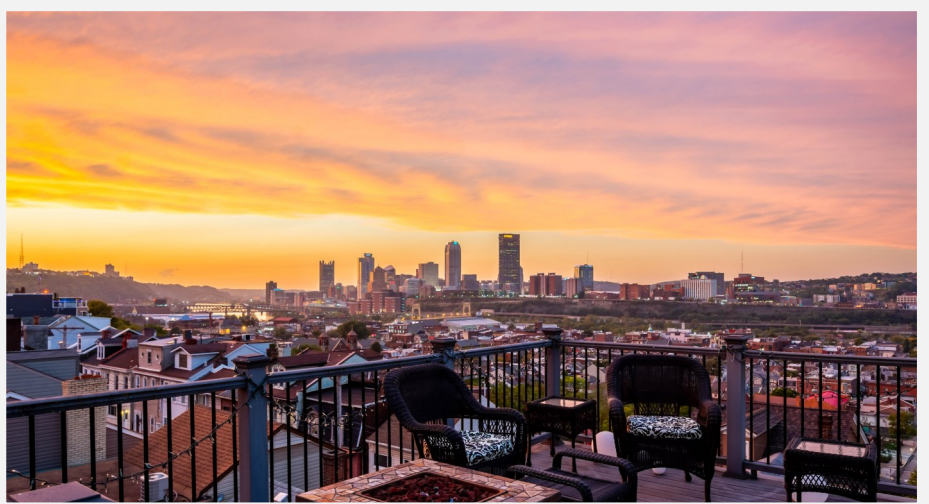
A vestibule entry leads through artisan crafted double doors with $\frac{3}{4}$ glass panes, and transom toppers. Graced with a geometric patterned ceramic tile floor, the expertly designed main entry door welcomes you into the grand foyer. A sweeping elegantly appointed staircase with a period lamp at the newel post evokes nostalgia.

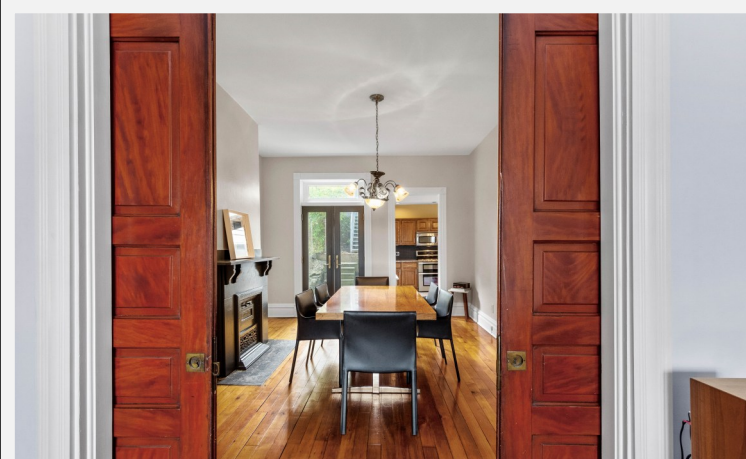
The original parlor serves as an inviting gathering room showcasing an heirloom marble fireplace with a striking floor to ceiling hearth. The soaring triple pane window fills the room with sun splashed warmth. An elegant set of wood carved pocket doors provide a grand entrance to a banquet sized dining room anchored by a prestigious fireplace.

The spacious kitchen offers an abundance of hard surface worktop space, fine wood cabinetry and tasteful backsplash. Newer stainless steel appliances and a tray ceiling with a tin inlay convey function and character.

The primary suite offers a retreat of unparalleled privacy. An adjacent bathroom complete with a generously sized ceramic tile glass enclosed shower offers added convenience. A private dressing area features a spectacular built in and organized storage. An additional bedroom/office ensures every guest or family member the same level of comfort and luxury. Offering an unobstructed view of the city skyline and a nearby bathroom that exudes Victorian elegance while offering today's luxuries.

The third floor gathering room is a breathtaking showpiece. The focal point is a custom wet bar crafted with furniture quality detail and old world craftsmanship reminiscent of a traditional Irish pub. Featuring custom moldings, a sleek wood top, glass display shelving, an abundance of cabinetry, and a built in beer tap, this roof top pub offers the pinnacle of luxury entertaining. A loft like sanctuary featuring a charming alcove, an elegant open staircase and an abundance of space to accommodate a generous amount of furnishings. A fabulous bathroom complete with a glass enclosed ceramic shower and a urinal for good conversation adds practicality and appeal to the space.

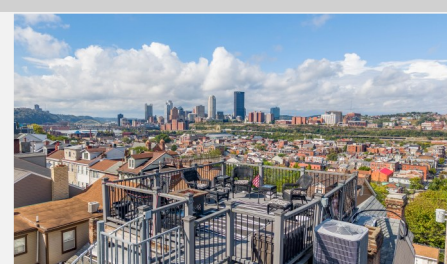
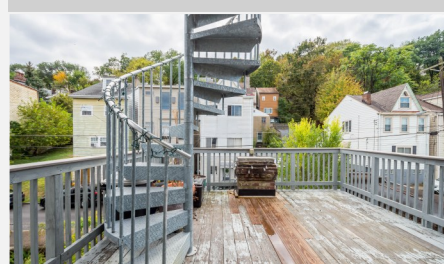




Adjacent to the gathering room are two spacious verandas adjoined by a spiral staircase. Crowned by a private roof top terrace this heirloom property offers an unparalleled cityscape vista, a rare find in the heart of the South Side.

Relax on the breezy front veranda while taking in the dynamic energy of the city below. Secluded behind the home, a private brick courtyard invites you to enjoy quiet mornings with your coffee in complete serenity.

View website here:



**HOWARD
HANNA**
REAL ESTATE SERVICES



Diana and Kathleen Mathison
(O) 412-561-7400 | (M) 412-377-7017
kathleenmathison@howardhanna.com