

Home data report

1601 Ivanhoe Street, Downingtown, Denver, Denver County, Colorado, United States, 80220



Total Area: 1678 sq. ft

Basement 1: 726 sq. ft, 1st Floor: 952 sq. ft

Excluded: Room 43 sq. ft, Utility 181 sq. ft, Garage 307 sq. ft, Patio 720 sq. ft, Deck 75 sq. ft, Fireplace 10 sq. ft, Walls: 165 sq. ft

Property summary

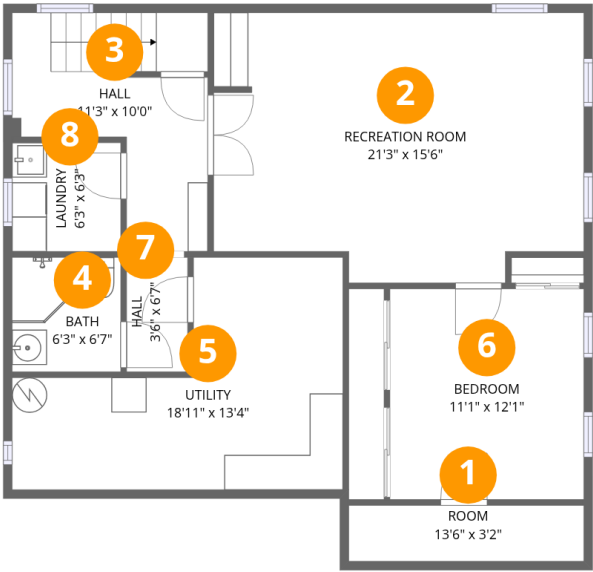
2 Floors

3 Bedrooms

2 Bathrooms

1 Garages

1601 Ivanhoe Street, Downingtown, Denver, Denver County, Colorado, United States, 80220

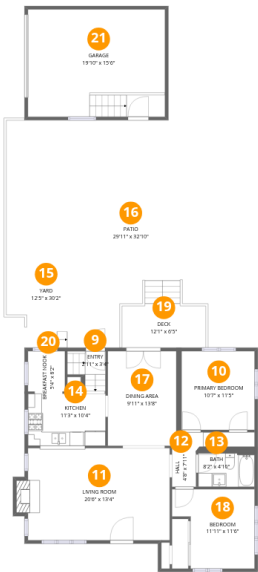


Room dimensions

Floor 1 Below grade Total:726sqft Excluded: 224sqft

#		Dimensions	sqft	Counted as living area
1	Room	13'6" x 3'2"	43 sq. ft	No
2	Recreation Room	21'3" x 15'6"	328 sq. ft	Yes
3	Hall	11'3" x 10'0"	112 sq. ft	Yes
4	Bath	6'3" x 6'7"	41 sq. ft	Yes
5	Utility	18'11" x 13'4"	252 sq. ft	No
6	Bedroom	11'1" x 12'1"	134 sq. ft	Yes
7	Hall	3'6" x 6'7"	23 sq. ft	Yes
8	Laundry	6'3" x 6'3"	39 sq. ft	Yes

1601 Ivanhoe Street, Downingtown, Denver, Denver County, Colorado, United States, 80220



Room dimensions

Floor 2 Total:952sqft Excluded: 1112sqft

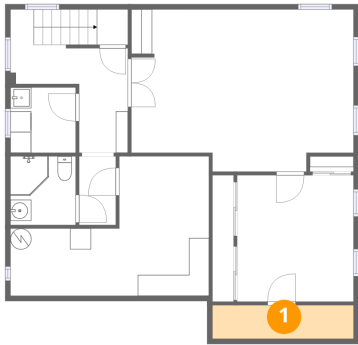
#		Dimensions	sqft	Counted as living area
9	Entry	2'11" x 3'4"	10 sq. ft	Yes
10	Primary Bedroom	10'7" x 11'5"	120 sq. ft	Yes
11	Living Room	20'6" x 13'4"	273 sq. ft	Yes
12	Hall	4'8" x 7'11"	37 sq. ft	Yes
13	Bath	8'2" x 4'10"	39 sq. ft	Yes
14	Kitchen	11'3" x 10'4"	116 sq. ft	Yes
15	Yard	12'5" x 30'2"	374 sq. ft	No
16	Patio	29'11" x 32'10"	983 sq. ft	No
17	Dining Area	9'11" x 13'8"	135 sq. ft	Yes
18	Bedroom	11'11" x 11'6"	137 sq. ft	Yes
19	Deck	12'1" x 6'5"	77 sq. ft	No

Home data report

1601 Ivanhoe Street, Downington, Denver, Denver County,
Colorado, United States, 80220

#		Dimensions	sqft	Counted as living area
20	Breakfast Nook	5'4" x 6'2"	33 sq. ft	Yes
21	Garage	19'10" x 15'6"	307 sq. ft	No

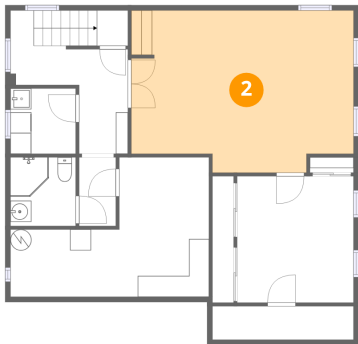
1 Floor 1 - Room



Dimensions: 13'6" x 3'2"
Area: 43 sq. ft
Counted as living area: No

Heated: Yes
Finished: No
Enclosed: Yes
Contiguous: Yes
Permitted: Yes
Wet space: No
Addition: No
Conversion: No

2 Floor 1 - Recreation Room

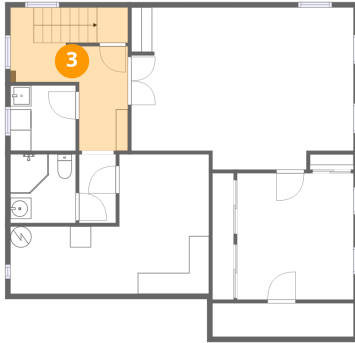


Dimensions: 21'3" x 15'6"
Area: 328 sq. ft
Counted as living area: Yes

Heated: Yes
Finished: Yes
Enclosed: Yes
Contiguous: Yes
Permitted: Yes
Wet space: No
Addition: No
Conversion: No

1601 Ivanhoe Street, Downingtown, Denver, Denver County,
Colorado, United States, 80220

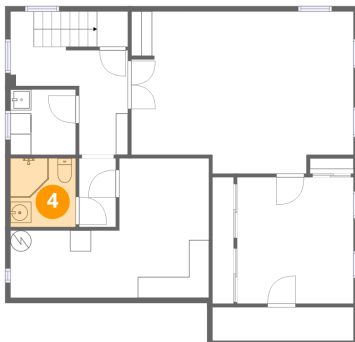
3 Floor 1 - Hall



Dimensions: 11'3" x 10'0"
Area: 112 sq. ft
Counted as living area: Yes

Heated: Yes
Finished: Yes
Enclosed: Yes
Contiguous: Yes
Permitted: Yes
Wet space: No
Addition: No
Conversion: No

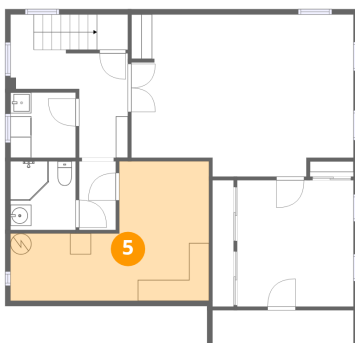
4 Floor 1 - Bath



Dimensions: 6'3" x 6'7"
Area: 41 sq. ft
Counted as living area: Yes

Heated: Yes
Finished: Yes
Enclosed: Yes
Contiguous: Yes
Permitted: Yes
Wet space: Yes
Addition: No
Conversion: No

5 Floor 1 - Utility

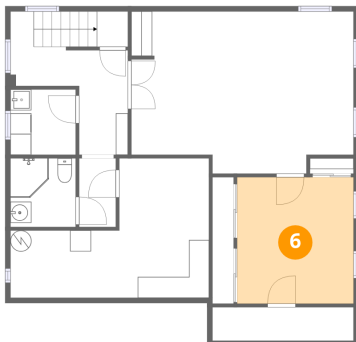


Dimensions: 18'11" x 13'4"
Area: 252 sq. ft
Counted as living area: No

Heated: Yes
Finished: No
Enclosed: Yes
Contiguous: Yes
Permitted: Yes
Wet space: No
Addition: No
Conversion: No

1601 Ivanhoe Street, Downingtown, Denver, Denver County,
Colorado, United States, 80220

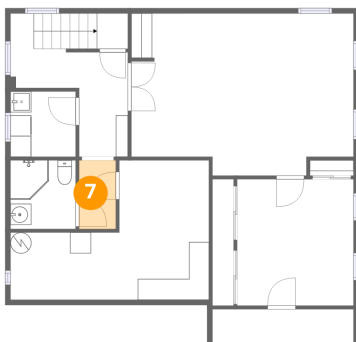
6 Floor 1 - Bedroom



Dimensions: 11'1" x 12'1"
Area: 134 sq. ft
Counted as living area: Yes

Heated: Yes
Finished: Yes
Enclosed: Yes
Contiguous: Yes
Permitted: Yes
Wet space: No
Addition: No
Conversion: No

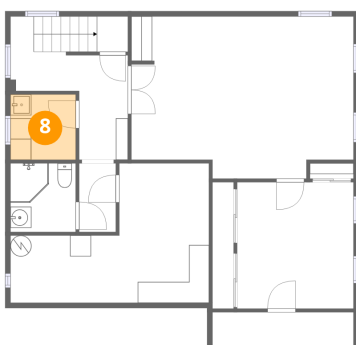
7 Floor 1 - Hall



Dimensions: 3'6" x 6'7"
Area: 23 sq. ft
Counted as living area: Yes

Heated: Yes
Finished: Yes
Enclosed: Yes
Contiguous: Yes
Permitted: Yes
Wet space: No
Addition: No
Conversion: No

8 Floor 1 - Laundry



Dimensions: 6'3" x 6'3"
Area: 39 sq. ft
Counted as living area: Yes

Heated: Yes
Finished: Yes
Enclosed: Yes
Contiguous: Yes
Permitted: Yes
Wet space: No
Addition: No
Conversion: No

1601 Ivanhoe Street, Downingtown, Denver, Denver County,
Colorado, United States, 80220

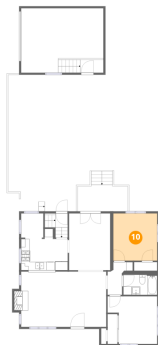
9 Floor 2 - Entry



Dimensions: 2'11" x 3'4"
Area: 10 sq. ft
Counted as living area: Yes

Heated: Yes
Finished: Yes
Enclosed: Yes
Contiguous: Yes
Permitted: Yes
Wet space: No
Addition: No
Conversion: No

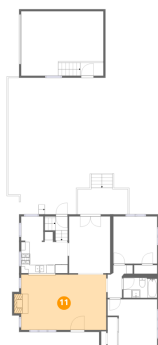
10 Floor 2 - Primary Bedroom



Dimensions: 10'7" x 11'5"
Area: 120 sq. ft
Counted as living area: Yes

Heated: Yes
Finished: Yes
Enclosed: Yes
Contiguous: Yes
Permitted: Yes
Wet space: No
Addition: No
Conversion: No

11 Floor 2 - Living Room

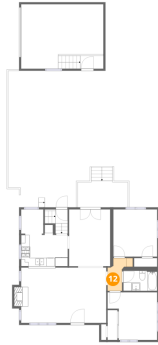


Dimensions: 20'6" x 13'4"
Area: 273 sq. ft
Counted as living area: Yes

Heated: Yes
Finished: Yes
Enclosed: Yes
Contiguous: Yes
Permitted: Yes
Wet space: No
Addition: No
Conversion: No

1601 Ivanhoe Street, Downingtown, Denver, Denver County,
Colorado, United States, 80220

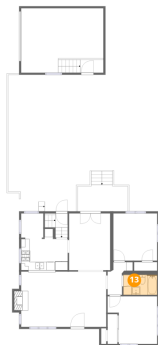
12 Floor 2 - Hall



Dimensions: 4'8" x 7'11"
Area: 37 sq. ft
Counted as living area: Yes

Heated: Yes
Finished: Yes
Enclosed: Yes
Contiguous: Yes
Permitted: Yes
Wet space: No
Addition: No
Conversion: No

13 Floor 2 - Bath



Dimensions: 8'2" x 4'10"
Area: 39 sq. ft
Counted as living area: Yes

Heated: Yes
Finished: Yes
Enclosed: Yes
Contiguous: Yes
Permitted: Yes
Wet space: Yes
Addition: No
Conversion: No

14 Floor 2 - Kitchen



Dimensions: 11'3" x 10'4"
Area: 116 sq. ft
Counted as living area: Yes

Heated: Yes
Finished: Yes
Enclosed: Yes
Contiguous: Yes
Permitted: Yes
Wet space: No
Addition: No
Conversion: No

1601 Ivanhoe Street, Downingtown, Denver, Denver County,
Colorado, United States, 80220

15 Floor 2 - Yard



Dimensions: 12'5" x 30'2"
Area: 374 sq. ft
Counted as living area: No

Heated: No
Finished: No
Enclosed: No
Contiguous: Yes
Permitted: No
Wet space: No
Addition: No
Conversion: No

16 Floor 2 - Patio



Dimensions: 29'11" x 32'10"
Area: 983 sq. ft
Counted as living area: No

Heated: No
Finished: No
Enclosed: No
Contiguous: Yes
Permitted: Yes
Wet space: No
Addition: No
Conversion: No

17 Floor 2 - Dining Area

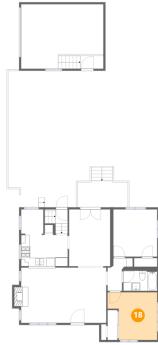


Dimensions: 9'11" x 13'8"
Area: 135 sq. ft
Counted as living area: Yes

Heated: Yes
Finished: Yes
Enclosed: Yes
Contiguous: Yes
Permitted: Yes
Wet space: No
Addition: No
Conversion: No

1601 Ivanhoe Street, Downingtown, Denver, Denver County,
Colorado, United States, 80220

18 Floor 2 - Bedroom



Dimensions: 11'11" x 11'6"
Area: 137 sq. ft
Counted as living area: Yes

Heated: Yes
Finished: Yes
Enclosed: Yes
Contiguous: Yes
Permitted: Yes
Wet space: No
Addition: No
Conversion: No

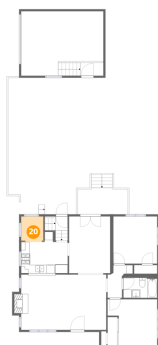
19 Floor 2 - Deck



Dimensions: 12'1" x 6'5"
Area: 77 sq. ft
Counted as living area: No

Heated: No
Finished: No
Enclosed: No
Contiguous: Yes
Permitted: Yes
Wet space: No
Addition: No
Conversion: No

20 Floor 2 - Breakfast Nook



Dimensions: 5'4" x 6'2"
Area: 33 sq. ft
Counted as living area: Yes

Heated: Yes
Finished: Yes
Enclosed: Yes
Contiguous: Yes
Permitted: Yes
Wet space: No
Addition: No
Conversion: No

1601 Ivanhoe Street, Downingtown, Denver, Denver County,
Colorado, United States, 80220

21 Floor 2 - Garage



Dimensions: 19'10" x 15'6"
Area: 307 sq. ft
Counted as living area: No

Heated: No
Finished: No
Enclosed: Yes
Contiguous: Yes
Permitted: Yes
Wet space: No
Addition: No
Conversion: No