



Total Area: 3011 sq. ft

1st Floor: 2275 sq. ft, 2nd Floor: 736 sq. ft

Excluded: Garage 521 sq. ft, Screened porch 236 sq. ft, Porch 144 sq. ft, Deck 124 sq. ft, Fireplace 32 sq. ft, Attic 763 sq. ft, Walls: 253 sq. ft


Property summary



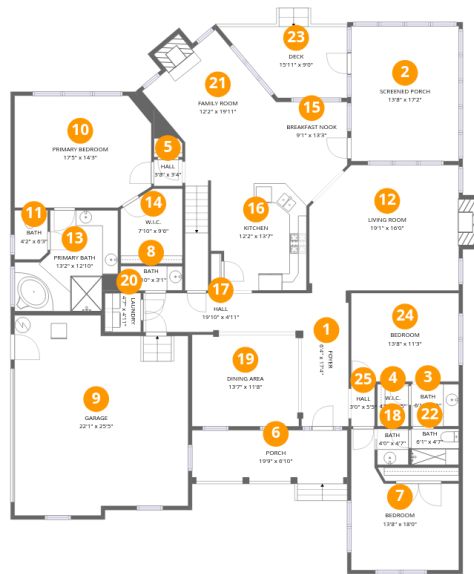
Home data report

**701 Toms Creek Road, Amberly, Cary, Chatham
County, North Carolina, United States, 27519**



 **1**
Half baths

 **1**
Garages



Room dimensions

Floor 1

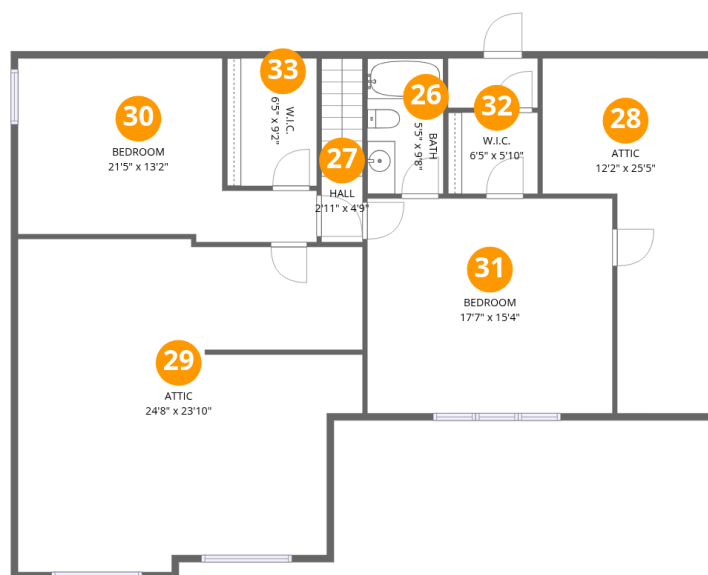
Total:2275sqft

Excluded: 1057sqft

#		Dimensions	sqft	Counted as living area
1	Foyer	6'4" x 17'4"	105 sq. ft	Yes
2	Screened Porch	13'8" x 17'2"	236 sq. ft	No
3	Bath	6'1" x 5'5"	33 sq. ft	Yes
4	W.I.C.	4'0" x 5'5"	21 sq. ft	Yes
5	Hall	3'8" x 3'4"	12 sq. ft	Yes
6	Porch	19'9" x 6'10"	144 sq. ft	No
7	Bedroom	13'8" x 18'0"	173 sq. ft	Yes
8	Bath	7'10" x 3'1"	24 sq. ft	Yes
9	Garage	22'1" x 25'5"	521 sq. ft	No
10	Primary Bedroom	17'5" x 14'3"	242 sq. ft	Yes
11	Bath	4'2" x 6'3"	26 sq. ft	Yes

**701 Toms Creek Road, Amberly, Cary, Chatham
County, North Carolina, United States, 27519**

#		Dimensions	sqft	Counted as living area
12	Living Room	19'1" x 16'0"	305 sq. ft	Yes
13	Primary Bath	13'2" x 12'10"	135 sq. ft	Yes
14	W.I.C.	7'10" x 9'6"	70 sq. ft	Yes
15	Breakfast Nook	9'1" x 13'3"	100 sq. ft	Yes
16	Kitchen	12'2" x 13'7"	154 sq. ft	Yes
17	Hall	19'10" x 4'11"	98 sq. ft	Yes
18	Bath	4'0" x 4'7"	18 sq. ft	Yes
19	Dining Area	13'7" x 11'8"	159 sq. ft	Yes
20	Laundry	4'7" x 4'11"	23 sq. ft	Yes
21	Family Room	12'2" x 19'11"	245 sq. ft	Yes
22	Bath	6'1" x 4'7"	28 sq. ft	Yes
23	Deck	15'11" x 9'0"	124 sq. ft	No
24	Bedroom	13'8" x 11'3"	154 sq. ft	Yes
25	Hall	3'0" x 5'5"	16 sq. ft	Yes



Room dimensions

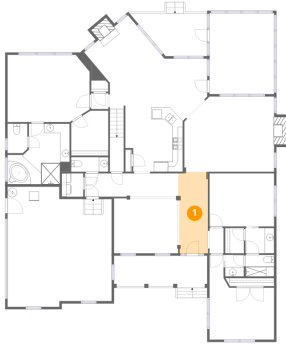
Floor 2

Total:736sqft

Excluded: 763sqft

#		Dimensions	sqft	Counted as living area
26	Bath	5'5" x 9'8"	53 sq. ft	Yes
27	Hall	2'11" x 4'9"	39 sq. ft	Yes
28	Attic	12'2" x 25'5"	224 sq. ft	No
29	Attic	24'8" x 23'10"	534 sq. ft	No
30	Bedroom	21'5" x 13'2"	210 sq. ft	Yes
31	Bedroom	17'7" x 15'4"	270 sq. ft	Yes
32	W.I.C.	6'5" x 5'10"	37 sq. ft	Yes
33	W.I.C.	6'5" x 9'2"	59 sq. ft	Yes

1 Floor 1 - Foyer



Dimensions: 6'4" x 17'4"
Area: 105 sq. ft
Counted as living area: Yes

Heated: Yes
Finished: Yes
Enclosed: Yes
Contiguous: Yes
Permitted: Yes
Wet space: No
Addition: No
Conversion: No

2 Floor 1 - Screened Porch



Dimensions: 13'8" x 17'2"
Area: 236 sq. ft
Counted as living area: No

Heated: No
Finished: No
Enclosed: No
Contiguous: Yes
Permitted: Yes
Wet space: No
Addition: No
Conversion: No

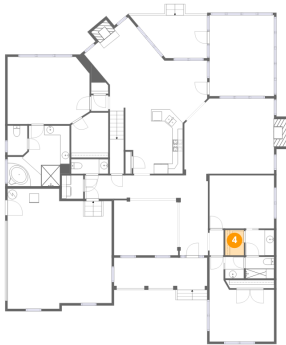
3 Floor 1 - Bath



Dimensions: 6'1" x 5'5"
Area: 33 sq. ft
Counted as living area: Yes

Heated: Yes
Finished: Yes
Enclosed: Yes
Contiguous: Yes
Permitted: Yes
Wet space: Yes
Addition: No
Conversion: No

4 Floor 1 - W.I.C.



Dimensions: 4'0" x 5'5"
Area: 21 sq. ft
Counted as living area: Yes

Heated: Yes
Finished: Yes
Enclosed: Yes
Contiguous: Yes
Permitted: Yes
Wet space: No
Addition: No
Conversion: No

5 Floor 1 - Hall



Dimensions: 3'8" x 3'4"
Area: 12 sq. ft
Counted as living area: Yes

Heated: Yes
Finished: Yes
Enclosed: Yes
Contiguous: Yes
Permitted: Yes
Wet space: No
Addition: No
Conversion: No

6 Floor 1 - Porch



Dimensions: 19'9" x 6'10"
Area: 144 sq. ft
Counted as living area: No

Heated: No
Finished: No
Enclosed: No
Contiguous: Yes
Permitted: Yes
Wet space: No
Addition: No
Conversion: No

7 Floor 1 - Bedroom



Dimensions: 13'8" x 18'0"
Area: 173 sq. ft
Counted as living area: Yes

Heated: Yes
Finished: Yes
Enclosed: Yes
Contiguous: Yes
Permitted: Yes
Wet space: No
Addition: No
Conversion: No

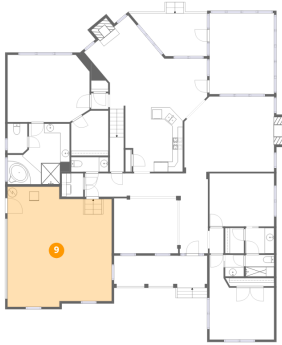
8 Floor 1 - Bath



Dimensions: 7'10" x 3'1"
Area: 24 sq. ft
Counted as living area: Yes

Heated: Yes
Finished: Yes
Enclosed: Yes
Contiguous: Yes
Permitted: Yes
Wet space: Yes
Addition: No
Conversion: No

9 Floor 1 - Garage



Dimensions: 22'1" x 25'5"
Area: 521 sq. ft
Counted as living area: No

Heated: No
Finished: No
Enclosed: Yes
Contiguous: Yes
Permitted: Yes
Wet space: No
Addition: No
Conversion: No

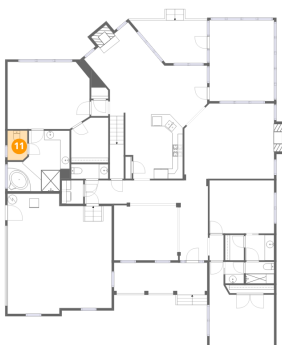
10 Floor 1 - Primary Bedroom



Dimensions: 17'5" x 14'3"
Area: 242 sq. ft
Counted as living area: Yes

Heated: Yes
Finished: Yes
Enclosed: Yes
Contiguous: Yes
Permitted: Yes
Wet space: No
Addition: No
Conversion: No

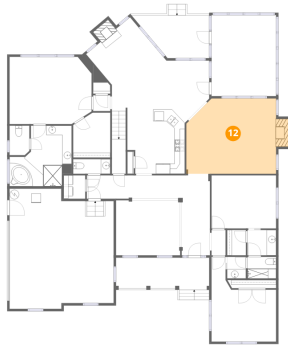
11 Floor 1 - Bath



Dimensions: 4'2" x 6'3"
Area: 26 sq. ft
Counted as living area: Yes

Heated: Yes
Finished: Yes
Enclosed: Yes
Contiguous: Yes
Permitted: Yes
Wet space: Yes
Addition: No
Conversion: No

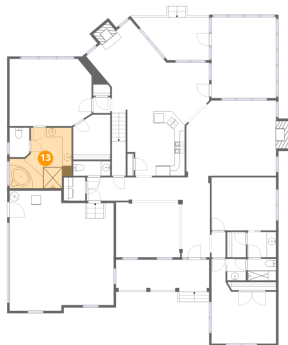
12 Floor 1 - Living Room



Dimensions: 19'1" x 16'0"
Area: 305 sq. ft
Counted as living area: Yes

Heated: Yes
Finished: Yes
Enclosed: Yes
Contiguous: Yes
Permitted: Yes
Wet space: No
Addition: No
Conversion: No

13 Floor 1 - Primary Bath



Dimensions: 13'2" x 12'10"
Area: 135 sq. ft
Counted as living area: Yes

Heated: Yes
Finished: Yes
Enclosed: Yes
Contiguous: Yes
Permitted: Yes
Wet space: Yes
Addition: No
Conversion: No

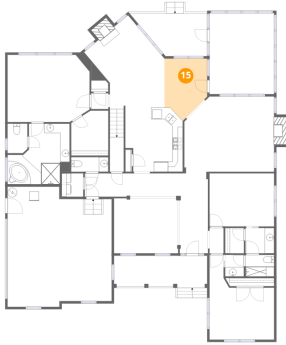
14 Floor 1 - W.I.C.



Dimensions: 7'10" x 9'6"
Area: 70 sq. ft
Counted as living area: Yes

Heated: Yes
Finished: Yes
Enclosed: Yes
Contiguous: Yes
Permitted: Yes
Wet space: No
Addition: No
Conversion: No

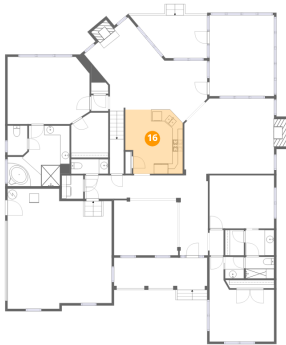
15 Floor 1 - Breakfast Nook



Dimensions: 9'1" x 13'3"
Area: 100 sq. ft
Counted as living area: Yes

Heated: Yes
Finished: Yes
Enclosed: Yes
Contiguous: Yes
Permitted: Yes
Wet space: No
Addition: No
Conversion: No

16 Floor 1 - Kitchen



Dimensions: 12'2" x 13'7"
Area: 154 sq. ft
Counted as living area: Yes

Heated: Yes
Finished: Yes
Enclosed: Yes
Contiguous: Yes
Permitted: Yes
Wet space: No
Addition: No
Conversion: No

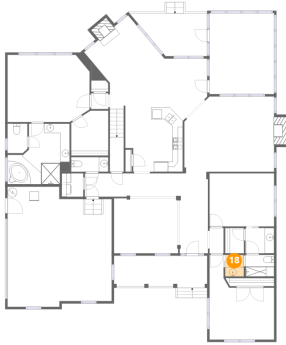
17 Floor 1 - Hall



Dimensions: 19'10" x 4'11"
Area: 98 sq. ft
Counted as living area: Yes

Heated: Yes
Finished: Yes
Enclosed: Yes
Contiguous: Yes
Permitted: Yes
Wet space: No
Addition: No
Conversion: No

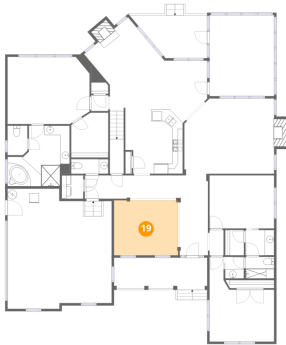
18 Floor 1 - Bath



Dimensions: 4'0" x 4'7"
Area: 18 sq. ft
Counted as living area: Yes

Heated: Yes
Finished: Yes
Enclosed: Yes
Contiguous: Yes
Permitted: Yes
Wet space: Yes
Addition: No
Conversion: No

19 Floor 1 - Dining Area



Dimensions: 13'7" x 11'8"
Area: 159 sq. ft
Counted as living area: Yes

Heated: Yes
Finished: Yes
Enclosed: Yes
Contiguous: Yes
Permitted: Yes
Wet space: No
Addition: No
Conversion: No

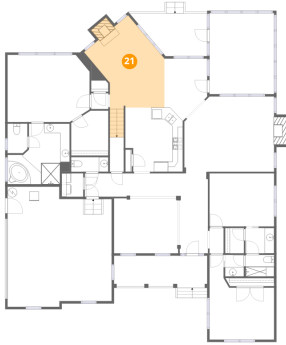
20 Floor 1 - Laundry



Dimensions: 4'7" x 4'11"
Area: 23 sq. ft
Counted as living area: Yes

Heated: Yes
Finished: Yes
Enclosed: Yes
Contiguous: Yes
Permitted: Yes
Wet space: No
Addition: No
Conversion: No

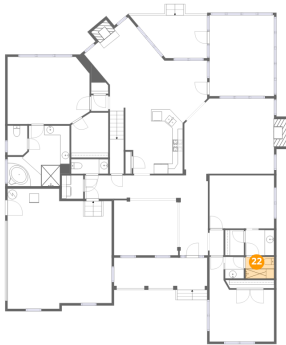
21 Floor 1 - Family Room



Dimensions: 12'2" x 19'11"
Area: 245 sq. ft
Counted as living area: Yes

Heated: Yes
Finished: Yes
Enclosed: Yes
Contiguous: Yes
Permitted: Yes
Wet space: No
Addition: No
Conversion: No

22 Floor 1 - Bath



Dimensions: 6'1" x 4'7"
Area: 28 sq. ft
Counted as living area: Yes

Heated: Yes
Finished: Yes
Enclosed: Yes
Contiguous: Yes
Permitted: Yes
Wet space: Yes
Addition: No
Conversion: No

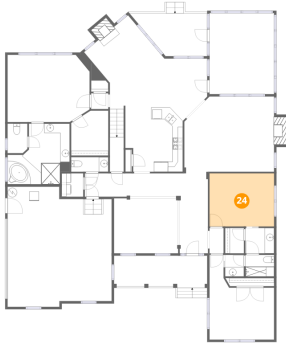
23 Floor 1 - Deck



Dimensions: 15'11" x 9'0"
Area: 124 sq. ft
Counted as living area: No

Heated: No
Finished: No
Enclosed: No
Contiguous: Yes
Permitted: Yes
Wet space: No
Addition: No
Conversion: No

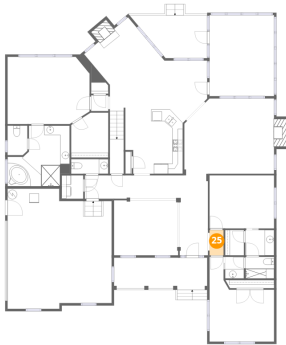
24 Floor 1 - Bedroom



Dimensions: 13'8" x 11'3"
Area: 154 sq. ft
Counted as living area: Yes

Heated: Yes
Finished: Yes
Enclosed: Yes
Contiguous: Yes
Permitted: Yes
Wet space: No
Addition: No
Conversion: No

25 Floor 1 - Hall



Dimensions: 3'0" x 5'5"
Area: 16 sq. ft
Counted as living area: Yes

Heated: Yes
Finished: Yes
Enclosed: Yes
Contiguous: Yes
Permitted: Yes
Wet space: No
Addition: No
Conversion: No

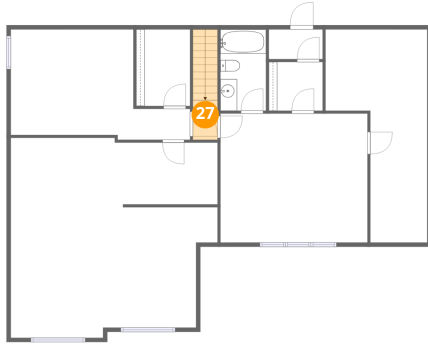
26 Floor 2 - Bath



Dimensions: 5'5" x 9'8"
Area: 53 sq. ft
Counted as living area: Yes

Heated: Yes
Finished: Yes
Enclosed: Yes
Contiguous: Yes
Permitted: Yes
Wet space: Yes
Addition: No
Conversion: No

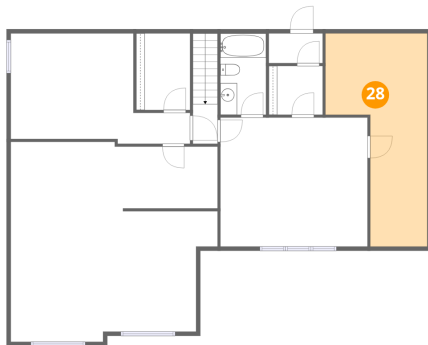
27 Floor 2 - Hall



Dimensions: 2'11" x 4'9"
Area: 39 sq. ft
Counted as living area: Yes

Heated: Yes
Finished: Yes
Enclosed: Yes
Contiguous: Yes
Permitted: Yes
Wet space: No
Addition: No
Conversion: No

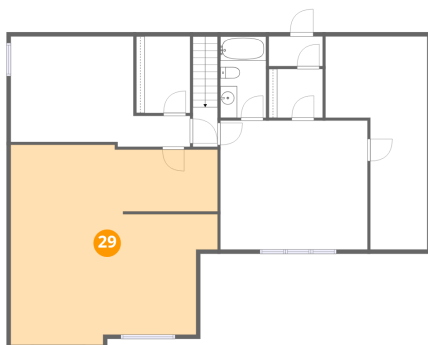
28 Floor 2 - Attic



Dimensions: 12'2" x 25'5"
Area: 224 sq. ft
Counted as living area: No

Heated: No
Finished: No
Enclosed: Yes
Contiguous: Yes
Permitted: Yes
Wet space: No
Addition: No
Conversion: No

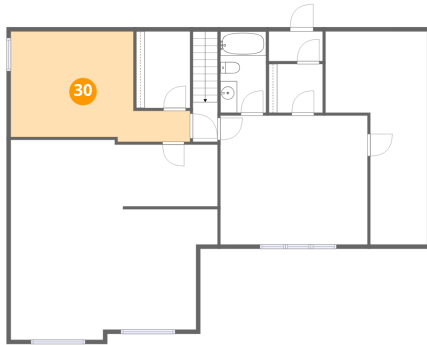
29 Floor 2 - Attic



Dimensions: 24'8" x 23'10"
Area: 534 sq. ft
Counted as living area: No

Heated: No
Finished: No
Enclosed: Yes
Contiguous: Yes
Permitted: Yes
Wet space: No
Addition: No
Conversion: No

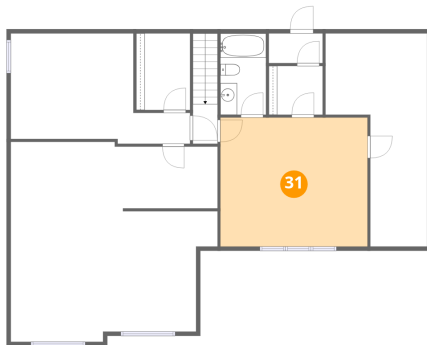
30 Floor 2 - Bedroom



Dimensions: 21'5" x 13'2"
Area: 210 sq. ft
Counted as living area: Yes

Heated: Yes
Finished: Yes
Enclosed: Yes
Contiguous: Yes
Permitted: Yes
Wet space: No
Addition: No
Conversion: No

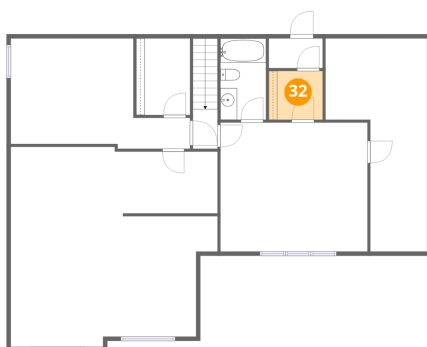
31 Floor 2 - Bedroom



Dimensions: 17'7" x 15'4"
Area: 270 sq. ft
Counted as living area: Yes

Heated: Yes
Finished: Yes
Enclosed: Yes
Contiguous: Yes
Permitted: Yes
Wet space: No
Addition: No
Conversion: No

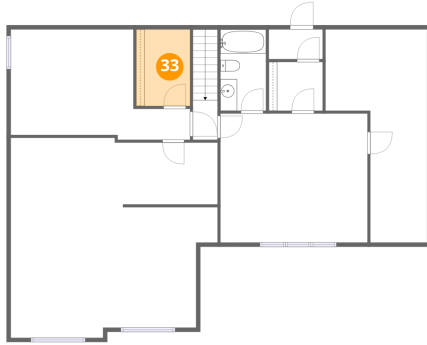
32 Floor 2 - W.I.C.



Dimensions: 6'5" x 5'10"
Area: 37 sq. ft
Counted as living area: Yes

Heated: Yes
Finished: Yes
Enclosed: Yes
Contiguous: Yes
Permitted: Yes
Wet space: No
Addition: No
Conversion: No

33 Floor 2 - W.I.C.



Dimensions: 6'5" x 9'2"
Area: 59 sq. ft
Counted as living area: Yes

Heated: Yes
Finished: Yes
Enclosed: Yes
Contiguous: Yes
Permitted: Yes
Wet space: No
Addition: No
Conversion: No