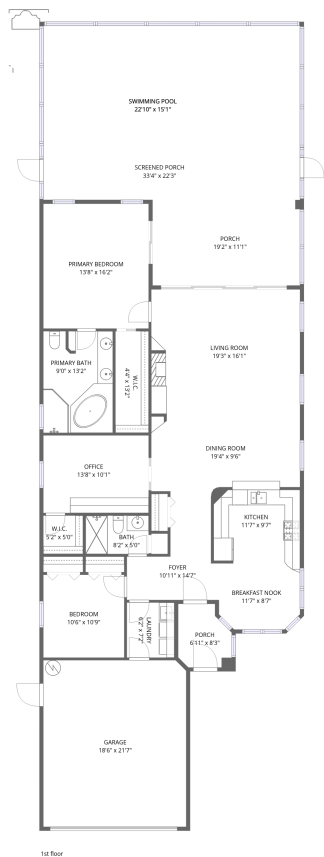


Home data report

5501 Legend Hills Lane, Spring Hill, Hernando County, Florida,
United States, 34609



Total Area: 1657 sq. ft

1st Floor: 1657 sq. ft

Excluded: Porch 263 sq. ft, Screened porch 475 sq. ft, Garage 400 sq. ft, Walls: 174 sq. ft

Property summary

1 Floors

2 Bedrooms

2 Bathrooms

1 Garages

Home data report

5501 Legend Hills Lane, Spring Hill, Hernando County, Florida,
United States, 34609



Room dimensions

Floor 1

Total:1657sqft

Excluded: 1138sqft

#		Dimensions	sqft	Counted as living area
1	Screened Porch	33'4" x 22'3"	752 sq. ft	No
2	Kitchen	11'7" x 9'7"	113 sq. ft	Yes
3	Primary Bath	9'0" x 13'2"	118 sq. ft	Yes
4	Swimming Pool	22'10" x 15'1"	277 sq. ft	No
5	Swimming Pool	22'10" x 15'1"	277 sq. ft	No
6	W.I.C.	4'4" x 13'2"	57 sq. ft	Yes
7	Primary Bedroom	13'8" x 16'2"	221 sq. ft	Yes
8	W.I.C.	5'2" x 5'0"	26 sq. ft	Yes
9	Bath	8'2" x 5'0"	41 sq. ft	Yes
10	Porch	19'2" x 11'1"	212 sq. ft	No
11	Breakfast Nook	11'7" x 8'7"	91 sq. ft	Yes

Home data report

**5501 Legend Hills Lane, Spring Hill, Hernando County, Florida,
United States, 34609**

#		Dimensions	sqft	Counted as living area
12	Office	13'8" x 10'1"	138 sq. ft	Yes
13	Garage	18'6" x 21'7"	400 sq. ft	No
14	Living Room	19'3" x 16'1"	311 sq. ft	Yes
15	Dining Room	19'4" x 9'6"	184 sq. ft	Yes
16	Porch	6'11" x 8'3"	51 sq. ft	No
17	Laundry	6'2" x 7'2"	44 sq. ft	Yes
18	Foyer	10'11" x 14'7"	109 sq. ft	Yes
19	Bedroom	10'6" x 10'9"	113 sq. ft	Yes

1 Floor 1 - Screened Porch



Dimensions: 33'4" x 22'3"
Area: 752 sq. ft
Counted as living area: No

Heated: No
Finished: No
Enclosed: No
Contiguous: Yes
Permitted: Yes
Wet space: No
Addition: No
Conversion: No

2 Floor 1 - Kitchen



Dimensions: 11'7" x 9'7"
Area: 113 sq. ft
Counted as living area: Yes

Heated: Yes
Finished: Yes
Enclosed: Yes
Contiguous: Yes
Permitted: Yes
Wet space: No
Addition: No
Conversion: No

3 Floor 1 - Primary Bath



Dimensions: 9'0" x 13'2"
Area: 118 sq. ft
Counted as living area: Yes

Heated: Yes
Finished: Yes
Enclosed: Yes
Contiguous: Yes
Permitted: Yes
Wet space: Yes
Addition: No
Conversion: No

4 Floor 1 - Swimming Pool



Dimensions: 22'10" x 15'1"
Area: 277 sq. ft
Counted as living area: No

Heated: No
Finished: No
Enclosed: No
Contiguous: Yes
Permitted: No
Wet space: No
Addition: No
Conversion: No

5 Floor 1 - Swimming Pool



Dimensions: 22'10" x 15'1"
Area: 277 sq. ft
Counted as living area: No

Heated: No
Finished: No
Enclosed: No
Contiguous: Yes
Permitted: No
Wet space: No
Addition: No
Conversion: No

6 Floor 1 - W.I.C.



Dimensions: 4'4" x 13'2"
Area: 57 sq. ft
Counted as living area: Yes

Heated: Yes
Finished: Yes
Enclosed: Yes
Contiguous: Yes
Permitted: Yes
Wet space: No
Addition: No
Conversion: No

7 Floor 1 - Primary Bedroom



Dimensions: 13'8" x 16'2"
Area: 221 sq. ft
Counted as living area: Yes

Heated: Yes
Finished: Yes
Enclosed: Yes
Contiguous: Yes
Permitted: Yes
Wet space: No
Addition: No
Conversion: No

8 Floor 1 - W.I.C.



Dimensions: 5'2" x 5'0"
Area: 26 sq. ft
Counted as living area: Yes

Heated: Yes
Finished: Yes
Enclosed: Yes
Contiguous: Yes
Permitted: Yes
Wet space: No
Addition: No
Conversion: No

9 Floor 1 - Bath



Dimensions: 8'2" x 5'0"
Area: 41 sq. ft
Counted as living area: Yes

Heated: Yes
Finished: Yes
Enclosed: Yes
Contiguous: Yes
Permitted: Yes
Wet space: Yes
Addition: No
Conversion: No

10 Floor 1 - Porch



Dimensions: 19'2" x 11'1"
Area: 212 sq. ft
Counted as living area: No

Heated: No
Finished: No
Enclosed: No
Contiguous: Yes
Permitted: Yes
Wet space: No
Addition: No
Conversion: No

11 Floor 1 - Breakfast Nook



Dimensions: 11'7" x 8'7"
Area: 91 sq. ft
Counted as living area: Yes

Heated: Yes
Finished: Yes
Enclosed: Yes
Contiguous: Yes
Permitted: Yes
Wet space: No
Addition: No
Conversion: No

12 Floor 1 - Office



Dimensions: 13'8" x 10'1"
Area: 138 sq. ft
Counted as living area: Yes

Heated: Yes
Finished: Yes
Enclosed: Yes
Contiguous: Yes
Permitted: Yes
Wet space: No
Addition: No
Conversion: No

13 Floor 1 - Garage



Dimensions: 18'6" x 21'7"
Area: 400 sq. ft
Counted as living area: No

Heated: No
Finished: No
Enclosed: Yes
Contiguous: Yes
Permitted: Yes
Wet space: No
Addition: No
Conversion: No

14 Floor 1 - Living Room



Dimensions: 19'3" x 16'1"
Area: 311 sq. ft
Counted as living area: Yes

Heated: Yes
Finished: Yes
Enclosed: Yes
Contiguous: Yes
Permitted: Yes
Wet space: No
Addition: No
Conversion: No

15 Floor 1 - Dining Room



Dimensions: 19'4" x 9'6"
Area: 184 sq. ft
Counted as living area: Yes

Heated: Yes
Finished: Yes
Enclosed: Yes
Contiguous: Yes
Permitted: Yes
Wet space: No
Addition: No
Conversion: No

16 Floor 1 - Porch



Dimensions: 6'11" x 8'3"
Area: 51 sq. ft
Counted as living area: No

Heated: No
Finished: No
Enclosed: No
Contiguous: Yes
Permitted: Yes
Wet space: No
Addition: No
Conversion: No

17 Floor 1 - Laundry



Dimensions: 6'2" x 7'2"
Area: 44 sq. ft
Counted as living area: Yes

Heated: Yes
Finished: Yes
Enclosed: Yes
Contiguous: Yes
Permitted: Yes
Wet space: No
Addition: No
Conversion: No

18 Floor 1 - Foyer



Dimensions: 10'11" x 14'7"
Area: 109 sq. ft
Counted as living area: Yes

Heated: Yes
Finished: Yes
Enclosed: Yes
Contiguous: Yes
Permitted: Yes
Wet space: No
Addition: No
Conversion: No

19 Floor 1 - Bedroom



Dimensions: 10'6" x 10'9"
Area: 113 sq. ft
Counted as living area: Yes

Heated: Yes
Finished: Yes
Enclosed: Yes
Contiguous: Yes
Permitted: Yes
Wet space: No
Addition: No
Conversion: No