

Home data report

# 404 SW Riverview Ave, Gresham, OR, US




**Total Area: 1807 sq. ft**

1st Floor: 570 sq. ft, 2nd Floor: 1237 sq. ft

Excluded: Utility 55 sq. ft, Garage 542 sq. ft, Fireplace 20 sq. ft, Walls: 156 sq. ft

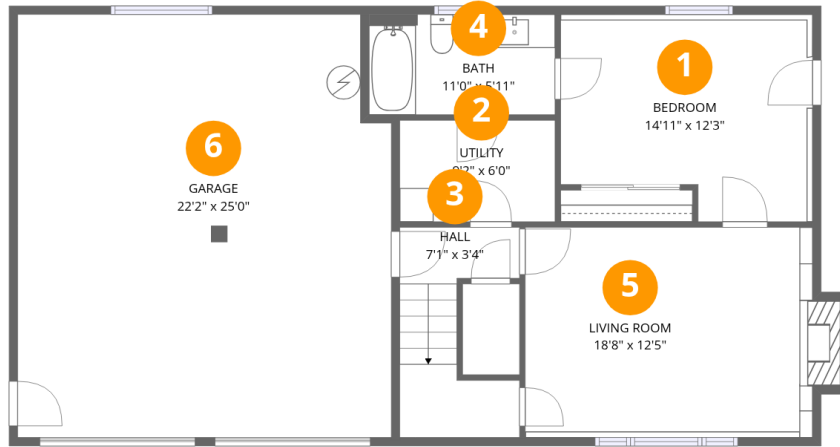
## Property summary

 **2** Floors

 **4** Bedrooms

 **3** Bathrooms

 **1** Garages



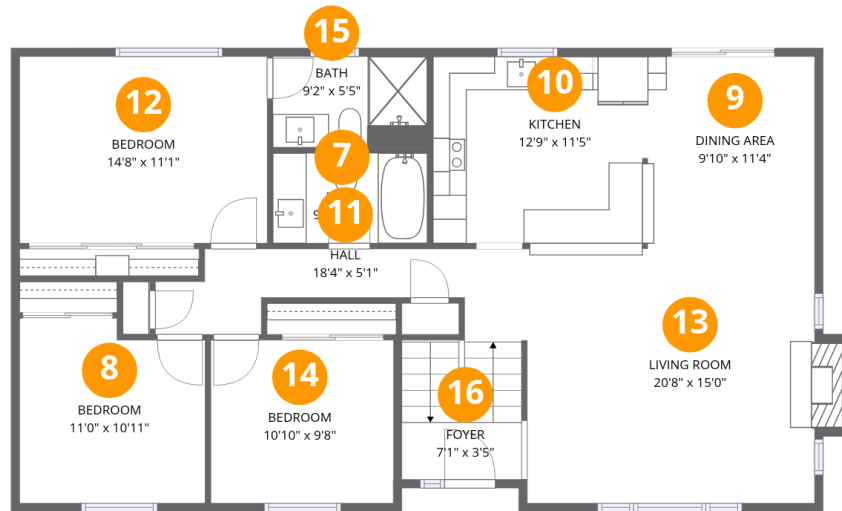
## Room dimensions

Floor 1

Total: 570 sqft

Excluded: 607 sqft

#		Dimensions	sqft	Counted as living area
1	Bedroom	14'11" x 12'3"	183 sq. ft	Yes
2	Utility	9'2" x 6'0"	55 sq. ft	No
3	Hall	7'1" x 3'4"	24 sq. ft	Yes
4	Bath	11'0" x 5'11"	65 sq. ft	Yes
5	Living Room	18'8" x 12'5"	232 sq. ft	Yes
6	Garage	22'2" x 25'0"	554 sq. ft	No



## Room dimensions

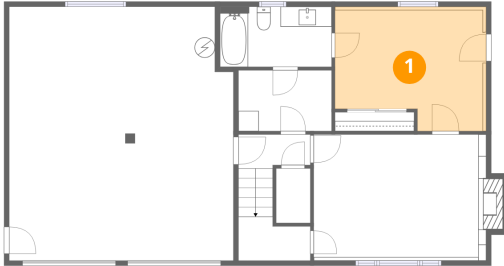
Floor 2

Total: 1237 sqft

Excluded: 10 sqft

#		Dimensions	sqft	Counted as living area
7	Bath	9'2" x 5'4"	49 sq. ft	Yes
8	Bedroom	11'0" x 10'11"	120 sq. ft	Yes
9	Dining Area	9'10" x 11'4"	112 sq. ft	Yes
10	Kitchen	12'9" x 11'5"	145 sq. ft	Yes
11	Hall	18'4" x 5'1"	93 sq. ft	Yes
12	Bedroom	14'8" x 11'1"	162 sq. ft	Yes
13	Living Room	20'8" x 15'0"	311 sq. ft	Yes
14	Bedroom	10'10" x 9'8"	104 sq. ft	Yes
15	Bath	9'2" x 5'5"	49 sq. ft	Yes
16	Foyer	7'1" x 3'5"	24 sq. ft	Yes

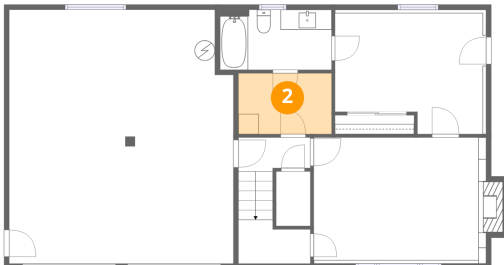
## 1 Floor 1 - Bedroom



Dimensions: 14'11" x 12'3"  
Area: 183 sq. ft  
Counted as living area: Yes

Heated: Yes  
Finished: Yes  
Enclosed: Yes  
Contiguous: Yes  
Permitted: Yes  
Wet space: No  
Addition: No  
Conversion: No

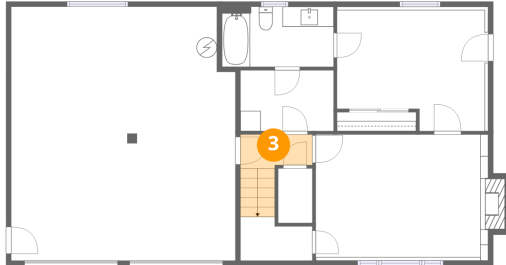
## 2 Floor 1 - Utility



Dimensions: 9'2" x 6'0"  
Area: 55 sq. ft  
Counted as living area: No

Heated: Yes  
Finished: No  
Enclosed: Yes  
Contiguous: Yes  
Permitted: Yes  
Wet space: No  
Addition: No  
Conversion: No

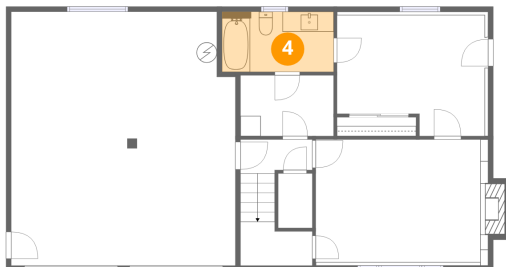
### 3 Floor 1 - Hall



Dimensions: 7'1" x 3'4"  
Area: 24 sq. ft  
Counted as living area: Yes

Heated: Yes  
Finished: Yes  
Enclosed: Yes  
Contiguous: Yes  
Permitted: Yes  
Wet space: No  
Addition: No  
Conversion: No

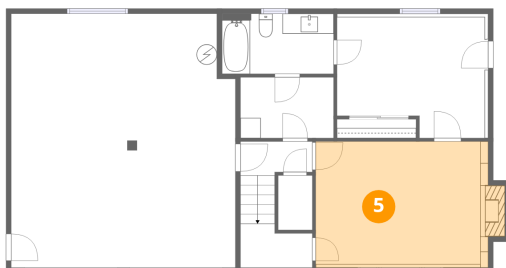
### 4 Floor 1 - Bath



Dimensions: 11'0" x 5'11"  
Area: 65 sq. ft  
Counted as living area: Yes

Heated: Yes  
Finished: Yes  
Enclosed: Yes  
Contiguous: Yes  
Permitted: Yes  
Wet space: Yes  
Addition: No  
Conversion: No

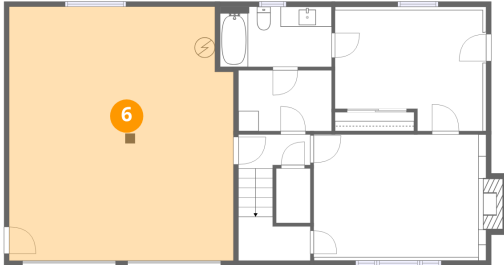
### 5 Floor 1 - Living Room



Dimensions: 18'8" x 12'5"  
Area: 232 sq. ft  
Counted as living area: Yes

Heated: Yes  
Finished: Yes  
Enclosed: Yes  
Contiguous: Yes  
Permitted: Yes  
Wet space: No  
Addition: No  
Conversion: No

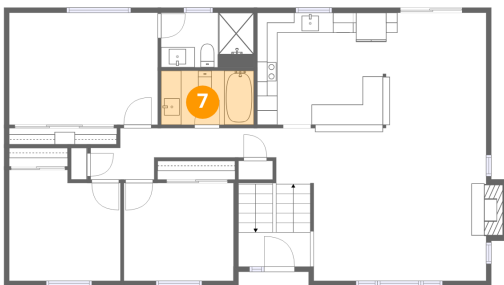
## 6 Floor 1 - Garage



Dimensions: 22'2" x 25'0"  
Area: 554 sq. ft  
Counted as living area: No

Heated: No  
Finished: No  
Enclosed: Yes  
Contiguous: Yes  
Permitted: Yes  
Wet space: No  
Addition: No  
Conversion: No

## 7 Floor 2 - Bath



Dimensions: 9'2" x 5'4"  
Area: 49 sq. ft  
Counted as living area: Yes

Heated: Yes  
Finished: Yes  
Enclosed: Yes  
Contiguous: Yes  
Permitted: Yes  
Wet space: Yes  
Addition: No  
Conversion: No

## 8 Floor 2 - Bedroom



Dimensions: 11'0" x 10'11"  
Area: 120 sq. ft  
Counted as living area: Yes

Heated: Yes  
Finished: Yes  
Enclosed: Yes  
Contiguous: Yes  
Permitted: Yes  
Wet space: No  
Addition: No  
Conversion: No

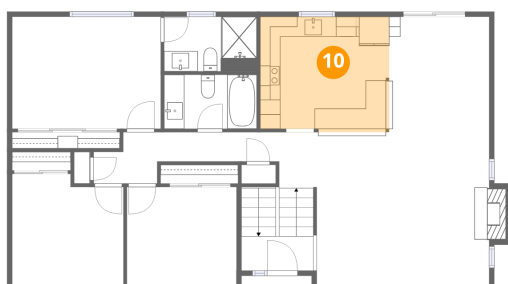
### 9 Floor 2 - Dining Area



Dimensions: 9'10" x 11'4"  
Area: 112 sq. ft  
Counted as living area: Yes

Heated: Yes  
Finished: Yes  
Enclosed: Yes  
Contiguous: Yes  
Permitted: Yes  
Wet space: No  
Addition: No  
Conversion: No

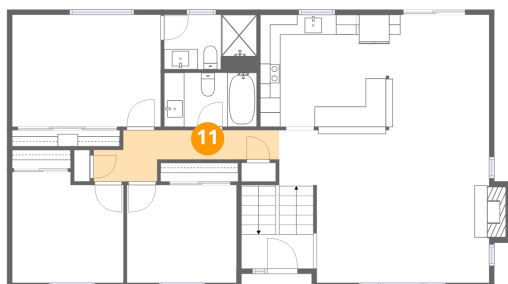
### 10 Floor 2 - Kitchen



Dimensions: 12'9" x 11'5"  
Area: 145 sq. ft  
Counted as living area: Yes

Heated: Yes  
Finished: Yes  
Enclosed: Yes  
Contiguous: Yes  
Permitted: Yes  
Wet space: No  
Addition: No  
Conversion: No

### 11 Floor 2 - Hall



Dimensions: 18'4" x 5'1"  
Area: 93 sq. ft  
Counted as living area: Yes

Heated: Yes  
Finished: Yes  
Enclosed: Yes  
Contiguous: Yes  
Permitted: Yes  
Wet space: No  
Addition: No  
Conversion: No

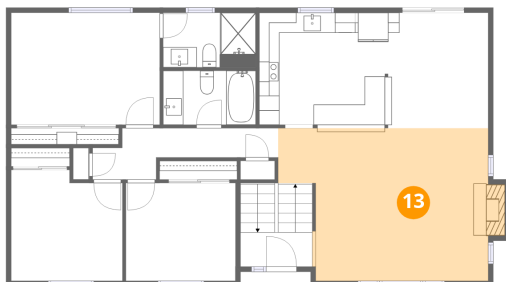
**12** Floor 2 - Bedroom



Dimensions: 14'8" x 11'1"  
Area: 162 sq. ft  
Counted as living area: Yes

Heated: Yes  
Finished: Yes  
Enclosed: Yes  
Contiguous: Yes  
Permitted: Yes  
Wet space: No  
Addition: No  
Conversion: No

**13** Floor 2 - Living Room



Dimensions: 20'8" x 15'0"  
Area: 311 sq. ft  
Counted as living area: Yes

Heated: Yes  
Finished: Yes  
Enclosed: Yes  
Contiguous: Yes  
Permitted: Yes  
Wet space: No  
Addition: No  
Conversion: No

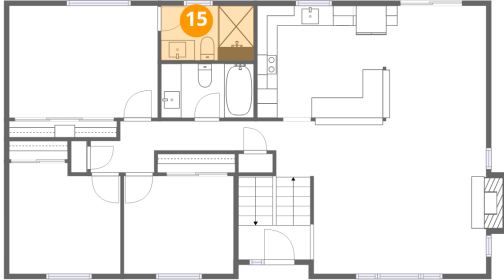
**14** Floor 2 - Bedroom



Dimensions: 10'10" x 9'8"  
Area: 104 sq. ft  
Counted as living area: Yes

Heated: Yes  
Finished: Yes  
Enclosed: Yes  
Contiguous: Yes  
Permitted: Yes  
Wet space: No  
Addition: No  
Conversion: No

**15** Floor 2 - Bath



Dimensions: 9'2" x 5'5"  
Area: 49 sq. ft  
Counted as living area: Yes

Heated: Yes  
Finished: Yes  
Enclosed: Yes  
Contiguous: Yes  
Permitted: Yes  
Wet space: Yes  
Addition: No  
Conversion: No

**16** Floor 2 - Foyer



Dimensions: 7'1" x 3'5"  
Area: 24 sq. ft  
Counted as living area: Yes

Heated: Yes  
Finished: Yes  
Enclosed: Yes  
Contiguous: Yes  
Permitted: Yes  
Wet space: No  
Addition: No  
Conversion: No