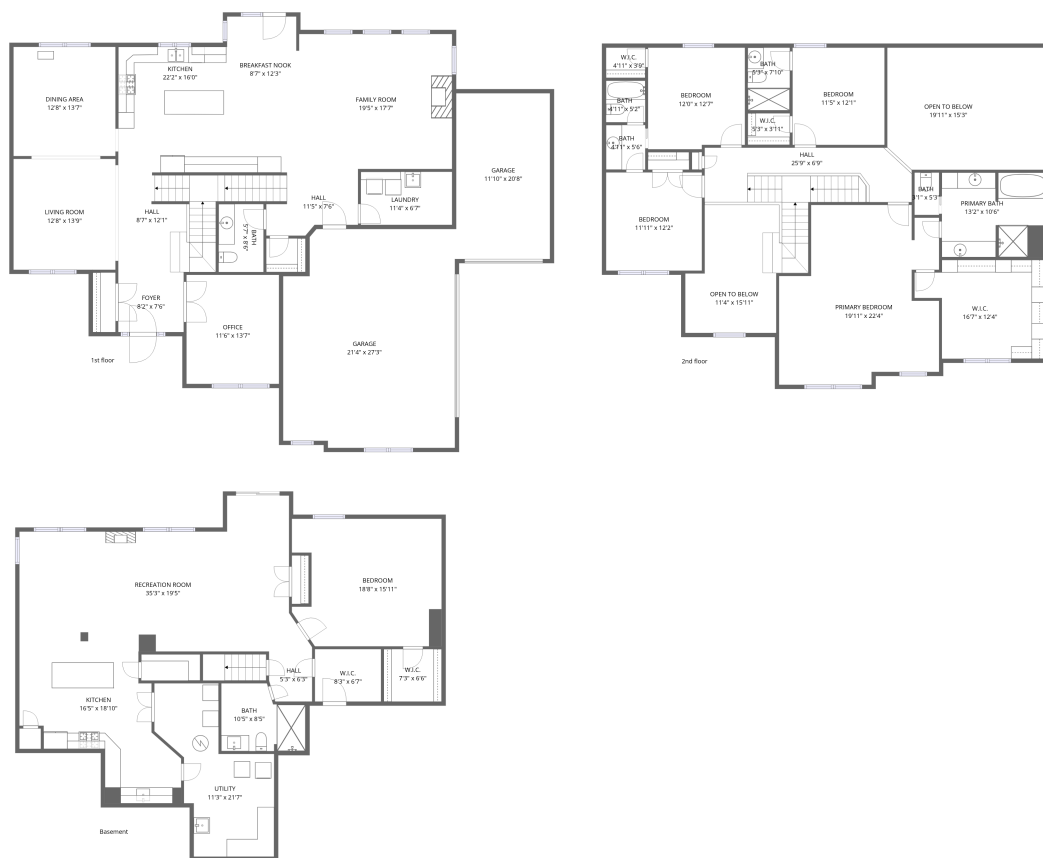


Home data report

39w509 Norton Lake Drive, Campton Hills, St. Charles, Kane County, Illinois, United States, 60175



Total Area: 4709 sq. ft

Basement: 1396 sq. ft, 1st Floor: 1732 sq. ft, 2nd Floor: 1581 sq. ft

Excluded: Utility 202 sq. ft, Garage 800 sq. ft, Open to below 452 sq. ft, Walls: 345 sq. ft

Property summary

 **3** Floors

 **5** Bedrooms

 **4** Bathrooms

Home data report

**39w509 Norton Lake Drive, Campton Hills, St. Charles, Kane
County, Illinois, United States, 60175**



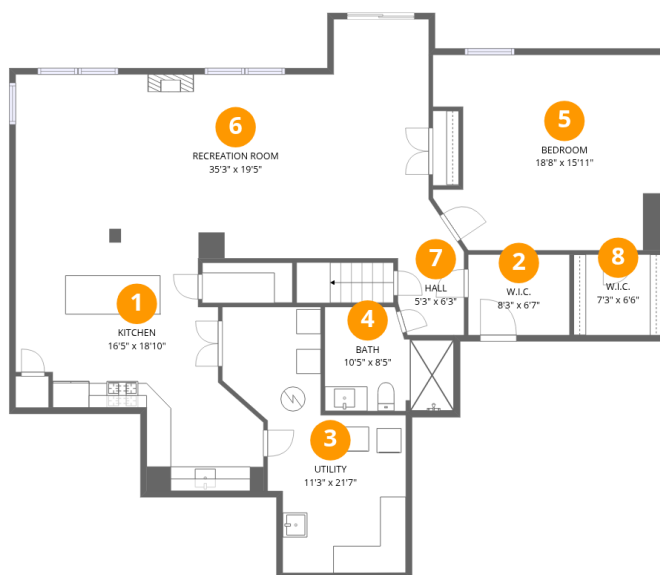
1
Half baths



2
Garages

Home data report

39w509 Norton Lake Drive, Campton Hills, St. Charles, Kane County, Illinois, United States, 60175



Room dimensions

Floor 1 Below grade

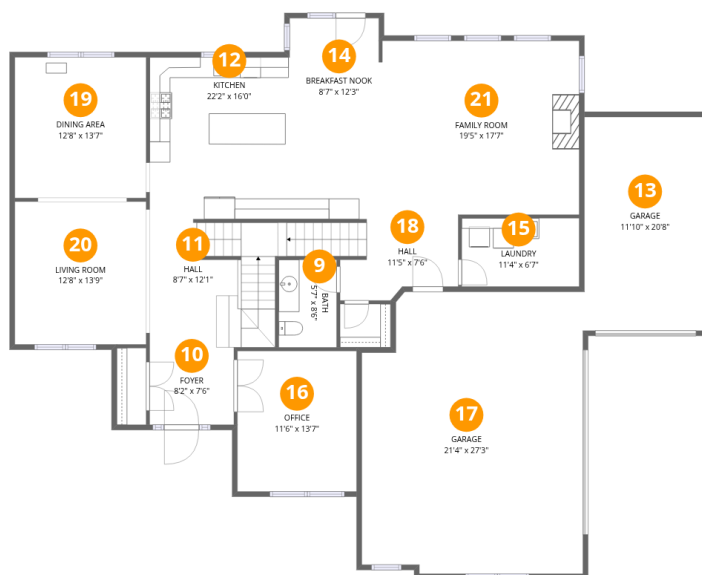
Total:1396sqft

Excluded: 202sqft

#		Dimensions	sqft	Counted as living area
1	Kitchen	16'5" x 18'10"	310 sq. ft	Yes
2	W.I.C.	8'3" x 6'7"	54 sq. ft	Yes
3	Utility	11'3" x 21'7"	242 sq. ft	No
4	Bath	10'5" x 8'5"	88 sq. ft	Yes
5	Bedroom	18'8" x 15'11"	296 sq. ft	Yes
6	Recreation Room	35'3" x 19'5"	685 sq. ft	Yes
7	Hall	5'3" x 6'3"	33 sq. ft	Yes
8	W.I.C.	7'3" x 6'6"	47 sq. ft	Yes

Home data report

39w509 Norton Lake Drive, Campton Hills, St. Charles, Kane County, Illinois, United States, 60175



Room dimensions

Floor 2

Total:1732sqft Excluded: 800sqft

#		Dimensions	sqft	Counted as living area
9	Bath	5'7" x 8'6"	47 sq. ft	Yes
10	Foyer	8'2" x 7'6"	61 sq. ft	Yes
11	Hall	8'7" x 12'1"	103 sq. ft	Yes
12	Kitchen	22'2" x 16'0"	354 sq. ft	Yes
13	Garage	11'10" x 20'8"	244 sq. ft	No
14	Breakfast Nook	8'7" x 12'3"	105 sq. ft	Yes
15	Laundry	11'4" x 6'7"	75 sq. ft	Yes
16	Office	11'6" x 13'7"	157 sq. ft	Yes
17	Garage	21'4" x 27'3"	581 sq. ft	No
18	Hall	11'5" x 7'6"	86 sq. ft	Yes
19	Dining Area	12'8" x 13'7"	172 sq. ft	Yes

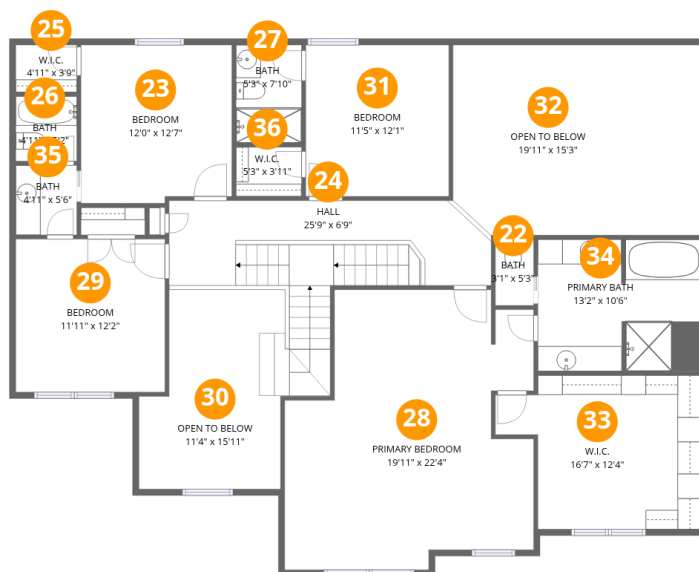
Home data report

**39w509 Norton Lake Drive, Campton Hills, St. Charles, Kane
County, Illinois, United States, 60175**

#		Dimensions	sqft	Counted as living area
20	Living Room	12'8" x 13'9"	175 sq. ft	Yes
21	Family Room	19'5" x 17'7"	341 sq. ft	Yes

Home data report

39w509 Norton Lake Drive, Campton Hills, St. Charles, Kane County, Illinois, United States, 60175



Room dimensions

Floor 3

Total:1581sqft

Excluded: 452sqft

#		Dimensions	sqft	Counted as living area
22	Bath	3'1" x 5'3"	16 sq. ft	Yes
23	Bedroom	12'0" x 12'7"	152 sq. ft	Yes
24	Hall	25'9" x 6'9"	173 sq. ft	Yes
25	W.I.C.	4'11" x 3'9"	18 sq. ft	Yes
26	Bath	4'11" x 5'2"	25 sq. ft	Yes
27	Bath	5'3" x 7'10"	41 sq. ft	Yes
28	Primary Bedroom	19'11" x 22'4"	445 sq. ft	Yes
29	Bedroom	11'11" x 12'2"	146 sq. ft	Yes
30	Open To Below	11'4" x 15'11"	180 sq. ft	No
31	Bedroom	11'5" x 12'1"	139 sq. ft	Yes
32	Open To Below	19'11" x 15'3"	303 sq. ft	No

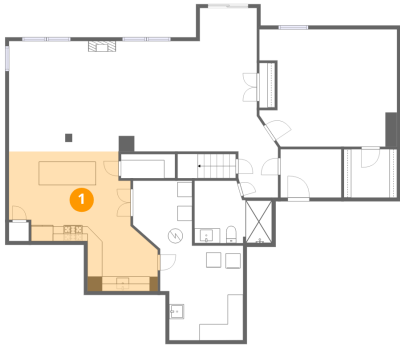
Home data report

**39w509 Norton Lake Drive, Campton Hills, St. Charles, Kane
County, Illinois, United States, 60175**

#		Dimensions	sqft	Counted as living area
33	W.I.C.	16'7" x 12'4"	204 sq. ft	Yes
34	Primary Bath	13'2" x 10'6"	139 sq. ft	Yes
35	Bath	4'11" x 5'6"	27 sq. ft	Yes
36	W.I.C.	5'3" x 3'11"	21 sq. ft	Yes

39w509 Norton Lake Drive, Campton Hills, St. Charles, Kane County, Illinois, United States, 60175

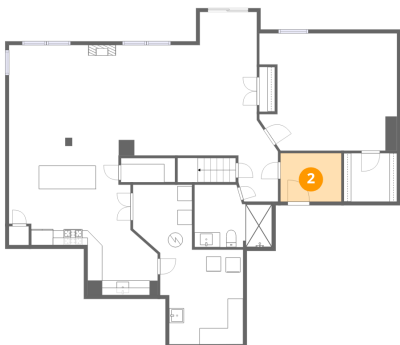
1 Floor 1 - Kitchen



Dimensions: 16'5" x 18'10"
Area: 310 sq. ft
Counted as living area: Yes

Heated: Yes
Finished: Yes
Enclosed: Yes
Contiguous: Yes
Permitted: Yes
Wet space: No
Addition: No
Conversion: No

2 Floor 1 - W.I.C.

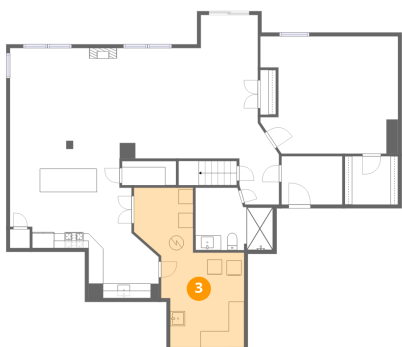


Dimensions: 8'3" x 6'7"
Area: 54 sq. ft
Counted as living area: Yes

Heated: Yes
Finished: Yes
Enclosed: Yes
Contiguous: Yes
Permitted: Yes
Wet space: No
Addition: No
Conversion: No

39w509 Norton Lake Drive, Campton Hills, St. Charles, Kane County, Illinois, United States, 60175

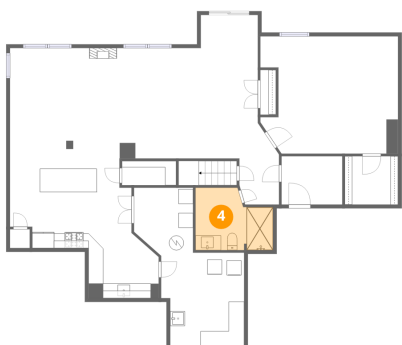
3 Floor 1 - Utility



Dimensions: 11'3" x 21'7"
Area: 242 sq. ft
Counted as living area: No

Heated: Yes
Finished: No
Enclosed: Yes
Contiguous: Yes
Permitted: Yes
Wet space: No
Addition: No
Conversion: No

4 Floor 1 - Bath



Dimensions: 10'5" x 8'5"
Area: 88 sq. ft
Counted as living area: Yes

Heated: Yes
Finished: Yes
Enclosed: Yes
Contiguous: Yes
Permitted: Yes
Wet space: Yes
Addition: No
Conversion: No

5 Floor 1 - Bedroom

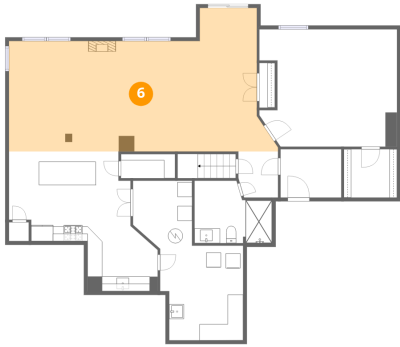


Dimensions: 18'8" x 15'11"
Area: 296 sq. ft
Counted as living area: Yes

Heated: Yes
Finished: Yes
Enclosed: Yes
Contiguous: Yes
Permitted: Yes
Wet space: No
Addition: No
Conversion: No

39w509 Norton Lake Drive, Campton Hills, St. Charles, Kane County, Illinois, United States, 60175

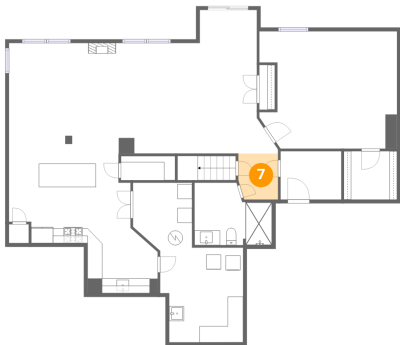
6 Floor 1 - Recreation Room



Dimensions: 35'3" x 19'5"
Area: 685 sq. ft
Counted as living area: Yes

Heated: Yes
Finished: Yes
Enclosed: Yes
Contiguous: Yes
Permitted: Yes
Wet space: No
Addition: No
Conversion: No

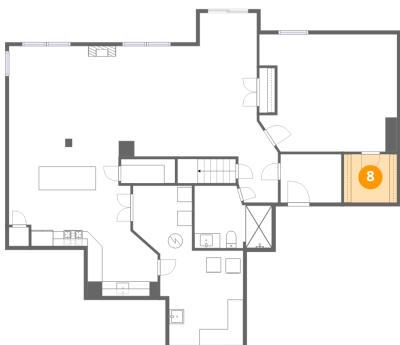
7 Floor 1 - Hall



Dimensions: 5'3" x 6'3"
Area: 33 sq. ft
Counted as living area: Yes

Heated: Yes
Finished: Yes
Enclosed: Yes
Contiguous: Yes
Permitted: Yes
Wet space: No
Addition: No
Conversion: No

8 Floor 1 - W.I.C.



Dimensions: 7'3" x 6'6"
Area: 47 sq. ft
Counted as living area: Yes

Heated: Yes
Finished: Yes
Enclosed: Yes
Contiguous: Yes
Permitted: Yes
Wet space: No
Addition: No
Conversion: No

39w509 Norton Lake Drive, Campton Hills, St. Charles, Kane County, Illinois, United States, 60175

9 Floor 2 - Bath



Dimensions: 5'7" x 8'6"
Area: 47 sq. ft
Counted as living area: Yes

Heated: Yes
Finished: Yes
Enclosed: Yes
Contiguous: Yes
Permitted: Yes
Wet space: Yes
Addition: No
Conversion: No

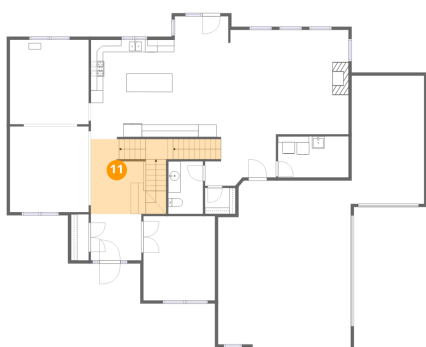
10 Floor 2 - Foyer



Dimensions: 8'2" x 7'6"
Area: 61 sq. ft
Counted as living area: Yes

Heated: Yes
Finished: Yes
Enclosed: Yes
Contiguous: Yes
Permitted: Yes
Wet space: No
Addition: No
Conversion: No

11 Floor 2 - Hall



Dimensions: 8'7" x 12'1"
Area: 103 sq. ft
Counted as living area: Yes

Heated: Yes
Finished: Yes
Enclosed: Yes
Contiguous: Yes
Permitted: Yes
Wet space: No
Addition: No
Conversion: No

39w509 Norton Lake Drive, Campton Hills, St. Charles, Kane County, Illinois, United States, 60175

12 Floor 2 - Kitchen



Dimensions: 22'2" x 16'0"
Area: 354 sq. ft
Counted as living area: Yes

Heated: Yes
Finished: Yes
Enclosed: Yes
Contiguous: Yes
Permitted: Yes
Wet space: No
Addition: No
Conversion: No

13 Floor 2 - Garage



Dimensions: 11'10" x 20'8"
Area: 244 sq. ft
Counted as living area: No

Heated: No
Finished: No
Enclosed: Yes
Contiguous: Yes
Permitted: Yes
Wet space: No
Addition: No
Conversion: No

14 Floor 2 - Breakfast Nook

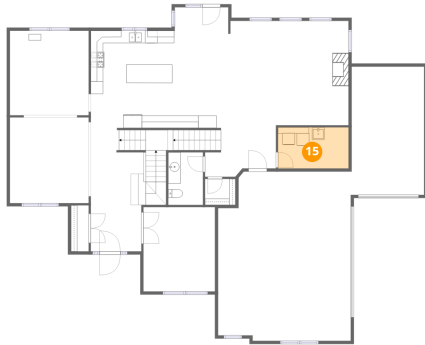


Dimensions: 8'7" x 12'3"
Area: 105 sq. ft
Counted as living area: Yes

Heated: Yes
Finished: Yes
Enclosed: Yes
Contiguous: Yes
Permitted: Yes
Wet space: No
Addition: No
Conversion: No

39w509 Norton Lake Drive, Campton Hills, St. Charles, Kane County, Illinois, United States, 60175

15 Floor 2 - Laundry



Dimensions: 11'4" x 6'7"
Area: 75 sq. ft
Counted as living area: Yes

Heated: Yes
Finished: Yes
Enclosed: Yes
Contiguous: Yes
Permitted: Yes
Wet space: No
Addition: No
Conversion: No

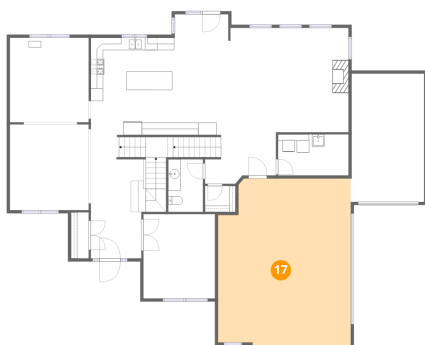
16 Floor 2 - Office



Dimensions: 11'6" x 13'7"
Area: 157 sq. ft
Counted as living area: Yes

Heated: Yes
Finished: Yes
Enclosed: Yes
Contiguous: Yes
Permitted: Yes
Wet space: No
Addition: No
Conversion: No

17 Floor 2 - Garage



Dimensions: 21'4" x 27'3"
Area: 581 sq. ft
Counted as living area: No

Heated: No
Finished: No
Enclosed: Yes
Contiguous: Yes
Permitted: Yes
Wet space: No
Addition: No
Conversion: No

39w509 Norton Lake Drive, Campton Hills, St. Charles, Kane County, Illinois, United States, 60175

18 Floor 2 - Hall



Dimensions: 11'5" x 7'6"
Area: 86 sq. ft
Counted as living area: Yes

Heated: Yes
Finished: Yes
Enclosed: Yes
Contiguous: Yes
Permitted: Yes
Wet space: No
Addition: No
Conversion: No

19 Floor 2 - Dining Area



Dimensions: 12'8" x 13'7"
Area: 172 sq. ft
Counted as living area: Yes

Heated: Yes
Finished: Yes
Enclosed: Yes
Contiguous: Yes
Permitted: Yes
Wet space: No
Addition: No
Conversion: No

20 Floor 2 - Living Room

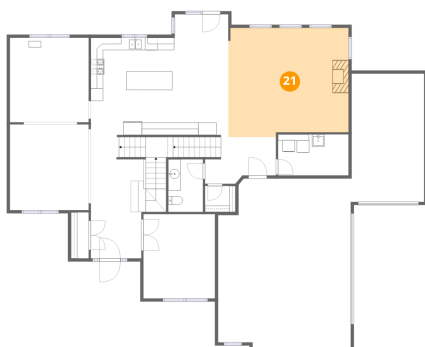


Dimensions: 12'8" x 13'9"
Area: 175 sq. ft
Counted as living area: Yes

Heated: Yes
Finished: Yes
Enclosed: Yes
Contiguous: Yes
Permitted: Yes
Wet space: No
Addition: No
Conversion: No

39w509 Norton Lake Drive, Campton Hills, St. Charles, Kane County, Illinois, United States, 60175

21 Floor 2 - Family Room



Dimensions: 19'5" x 17'7"
Area: 341 sq. ft
Counted as living area: Yes

Heated: Yes
Finished: Yes
Enclosed: Yes
Contiguous: Yes
Permitted: Yes
Wet space: No
Addition: No
Conversion: No

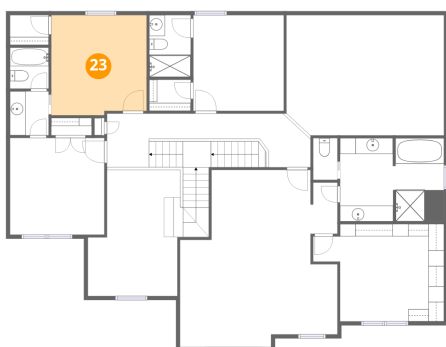
22 Floor 3 - Bath



Dimensions: 3'1" x 5'3"
Area: 16 sq. ft
Counted as living area: Yes

Heated: Yes
Finished: Yes
Enclosed: Yes
Contiguous: Yes
Permitted: Yes
Wet space: Yes
Addition: No
Conversion: No

23 Floor 3 - Bedroom

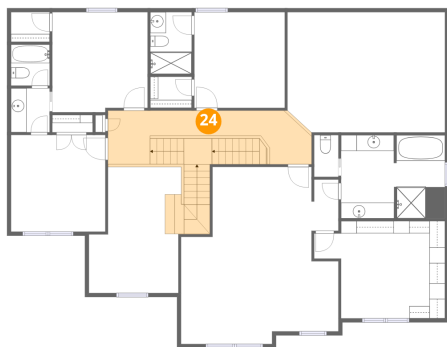


Dimensions: 12'0" x 12'7"
Area: 152 sq. ft
Counted as living area: Yes

Heated: Yes
Finished: Yes
Enclosed: Yes
Contiguous: Yes
Permitted: Yes
Wet space: No
Addition: No
Conversion: No

39w509 Norton Lake Drive, Campton Hills, St. Charles, Kane County, Illinois, United States, 60175

24 Floor 3 - Hall



Dimensions: 25'9" x 6'9"
Area: 173 sq. ft
Counted as living area: Yes

Heated: Yes
Finished: Yes
Enclosed: Yes
Contiguous: Yes
Permitted: Yes
Wet space: No
Addition: No
Conversion: No

25 Floor 3 - W.I.C.



Dimensions: 4'11" x 3'9"
Area: 18 sq. ft
Counted as living area: Yes

Heated: Yes
Finished: Yes
Enclosed: Yes
Contiguous: Yes
Permitted: Yes
Wet space: No
Addition: No
Conversion: No

26 Floor 3 - Bath

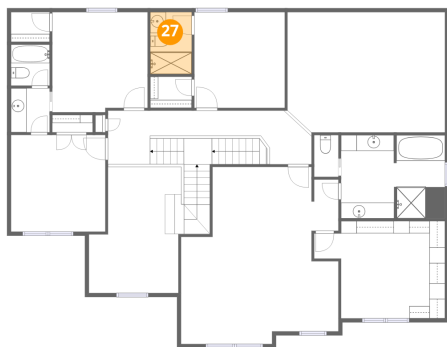


Dimensions: 4'11" x 5'2"
Area: 25 sq. ft
Counted as living area: Yes

Heated: Yes
Finished: Yes
Enclosed: Yes
Contiguous: Yes
Permitted: Yes
Wet space: Yes
Addition: No
Conversion: No

39w509 Norton Lake Drive, Campton Hills, St. Charles, Kane County, Illinois, United States, 60175

27 Floor 3 - Bath



Dimensions: 5'3" x 7'10"
Area: 41 sq. ft
Counted as living area: Yes

Heated: Yes
Finished: Yes
Enclosed: Yes
Contiguous: Yes
Permitted: Yes
Wet space: Yes
Addition: No
Conversion: No

28 Floor 3 - Primary Bedroom



Dimensions: 19'11" x 22'4"
Area: 445 sq. ft
Counted as living area: Yes

Heated: Yes
Finished: Yes
Enclosed: Yes
Contiguous: Yes
Permitted: Yes
Wet space: No
Addition: No
Conversion: No

29 Floor 3 - Bedroom

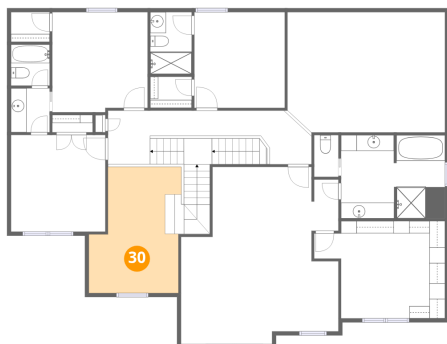


Dimensions: 11'11" x 12'2"
Area: 146 sq. ft
Counted as living area: Yes

Heated: Yes
Finished: Yes
Enclosed: Yes
Contiguous: Yes
Permitted: Yes
Wet space: No
Addition: No
Conversion: No

39w509 Norton Lake Drive, Campton Hills, St. Charles, Kane County, Illinois, United States, 60175

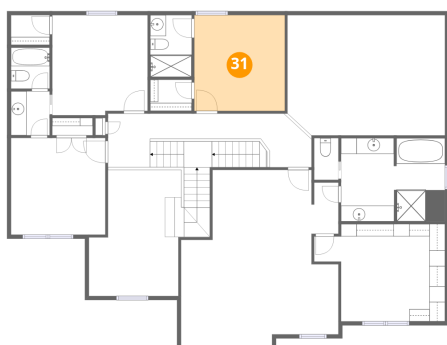
30 Floor 3 - Open To Below



Dimensions: 11'4" x 15'11"
Area: 180 sq. ft
Counted as living area: No

Heated: No
Finished: No
Enclosed: No
Contiguous: Yes
Permitted: No
Wet space: No
Addition: No
Conversion: No

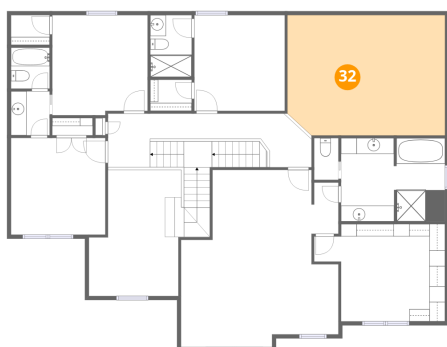
31 Floor 3 - Bedroom



Dimensions: 11'5" x 12'1"
Area: 139 sq. ft
Counted as living area: Yes

Heated: Yes
Finished: Yes
Enclosed: Yes
Contiguous: Yes
Permitted: Yes
Wet space: No
Addition: No
Conversion: No

32 Floor 3 - Open To Below

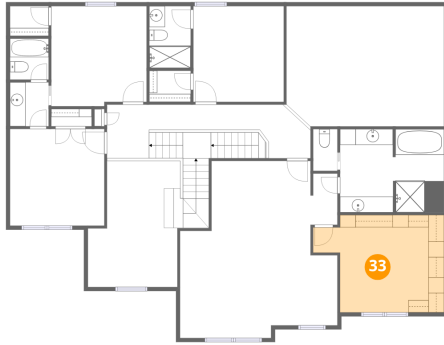


Dimensions: 19'11" x 15'3"
Area: 303 sq. ft
Counted as living area: No

Heated: No
Finished: No
Enclosed: No
Contiguous: Yes
Permitted: No
Wet space: No
Addition: No
Conversion: No

39w509 Norton Lake Drive, Campton Hills, St. Charles, Kane County, Illinois, United States, 60175

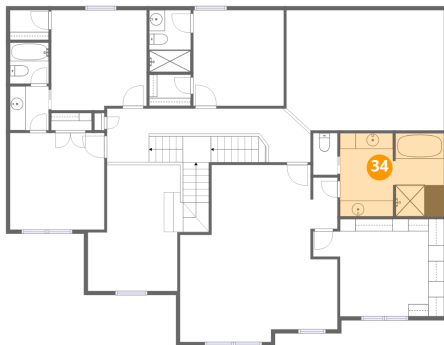
33 Floor 3 - W.I.C.



Dimensions: 16'7" x 12'4"
Area: 204 sq. ft
Counted as living area: Yes

Heated: Yes
Finished: Yes
Enclosed: Yes
Contiguous: Yes
Permitted: Yes
Wet space: No
Addition: No
Conversion: No

34 Floor 3 - Primary Bath



Dimensions: 13'2" x 10'6"
Area: 139 sq. ft
Counted as living area: Yes

Heated: Yes
Finished: Yes
Enclosed: Yes
Contiguous: Yes
Permitted: Yes
Wet space: Yes
Addition: No
Conversion: No

35 Floor 3 - Bath

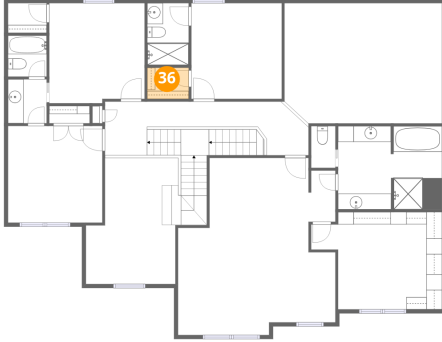


Dimensions: 4'11" x 5'6"
Area: 27 sq. ft
Counted as living area: Yes

Heated: Yes
Finished: Yes
Enclosed: Yes
Contiguous: Yes
Permitted: Yes
Wet space: Yes
Addition: No
Conversion: No

39w509 Norton Lake Drive, Campton Hills, St. Charles, Kane
County, Illinois, United States, 60175

36 Floor 3 - W.I.C.



Dimensions: 5'3" x 3'11"
Area: 21 sq. ft
Counted as living area: Yes

Heated: Yes
Finished: Yes
Enclosed: Yes
Contiguous: Yes
Permitted: Yes
Wet space: No
Addition: No
Conversion: No