

Home data report

285 Forest Avenue, Glen Ellyn, DuPage County, Illinois, United States, 60137



Total Area: 1103 sq. ft

Basement: 0 sq. ft, 1st Floor: 944 sq. ft, 2nd Floor: 159 sq. ft

Excluded: Storage 161 sq. ft, Basement 783 sq. ft, Screened porch 126 sq. ft, Attic 785 sq. ft, Walls: 212 sq. ft

Property summary

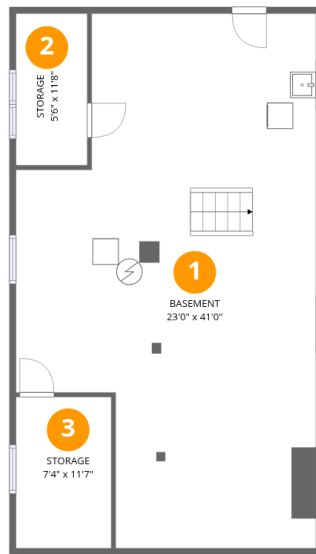
 **3** Floors

 **2** Bedrooms

 **1** Bathrooms

Home data report

285 Forest Avenue, Glen Ellyn, DuPage County, Illinois, United States, 60137



Room dimensions

Floor 1 Below grade

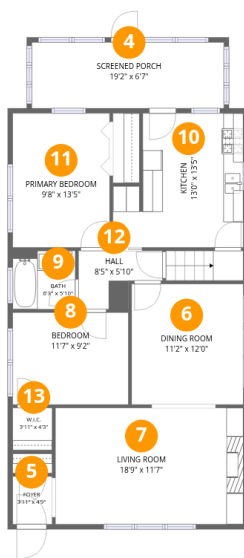
Total:0sqft

Excluded: 944sqft

#		Dimensions	sqft	Counted as living area
1	Basement	23'0" x 41'0"	783 sq. ft	No
2	Storage	5'6" x 11'8"	64 sq. ft	No
3	Storage	7'4" x 11'7"	85 sq. ft	No

Home data report

285 Forest Avenue, Glen Ellyn, DuPage County, Illinois, United States, 60137



Room dimensions

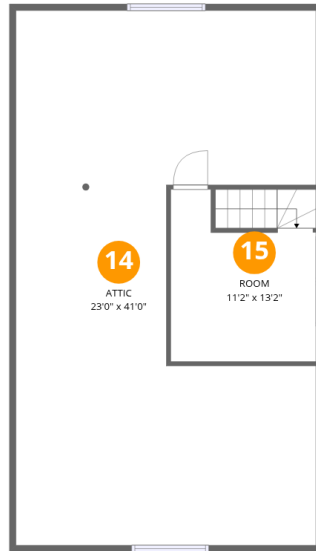
Floor 2

Total:944sqft Excluded: 126sqft

#		Dimensions	sqft	Counted as living area
4	Screened Porch	19'2" x 6'7"	126 sq. ft	No
5	Foyer	3'11" x 4'9"	19 sq. ft	Yes
6	Dining Room	11'2" x 12'0"	134 sq. ft	Yes
7	Living Room	18'9" x 11'7"	218 sq. ft	Yes
8	Bedroom	11'7" x 9'2"	106 sq. ft	Yes
9	Bath	6'3" x 5'10"	36 sq. ft	Yes
10	Kitchen	13'0" x 13'5"	152 sq. ft	Yes
11	Primary Bedroom	9'8" x 13'5"	129 sq. ft	Yes
12	Hall	8'5" x 5'10"	39 sq. ft	Yes
13	W.I.C.	3'11" x 4'3"	17 sq. ft	Yes

Home data report

285 Forest Avenue, Glen Ellyn, DuPage County, Illinois, United States, 60137



Room dimensions

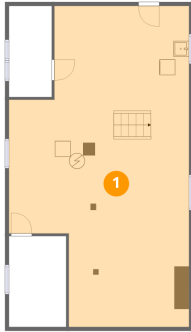
Floor 3

Total:159sqft

Excluded: 785sqft

#		Dimensions	sqft	Counted as living area
14	Attic	23'0" x 41'0"	785 sq. ft	No
15	Room	11'2" x 13'2"	144 sq. ft	Yes

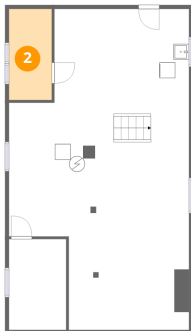
1 Floor 1 - Basement



Dimensions: 23'0" x 41'0"
Area: 783 sq. ft
Counted as living area: No

Heated: Yes
Finished: No
Enclosed: Yes
Contiguous: Yes
Permitted: Yes
Wet space: No
Addition: No
Conversion: No

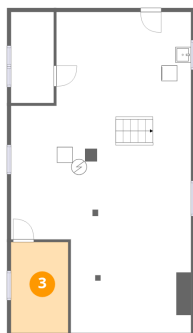
2 Floor 1 - Storage



Dimensions: 5'6" x 11'8"
Area: 64 sq. ft
Counted as living area: No

Heated: No
Finished: No
Enclosed: No
Contiguous: Yes
Permitted: Yes
Wet space: No
Addition: No
Conversion: No

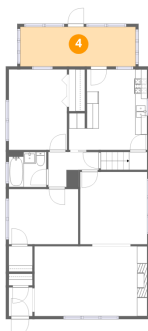
3 Floor 1 - Storage



Dimensions: 7'4" x 11'7"
Area: 85 sq. ft
Counted as living area: No

Heated: No
Finished: No
Enclosed: No
Contiguous: Yes
Permitted: Yes
Wet space: No
Addition: No
Conversion: No

4 Floor 2 - Screened Porch



Dimensions: 19'2" x 6'7"
Area: 126 sq. ft
Counted as living area: No

Heated: No
Finished: No
Enclosed: No
Contiguous: Yes
Permitted: Yes
Wet space: No
Addition: No
Conversion: No

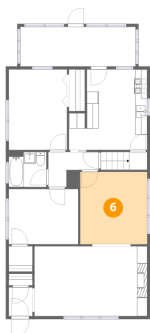
5 Floor 2 - Foyer



Dimensions: 3'11" x 4'9"
Area: 19 sq. ft
Counted as living area: Yes

Heated: Yes
Finished: Yes
Enclosed: Yes
Contiguous: Yes
Permitted: Yes
Wet space: No
Addition: No
Conversion: No

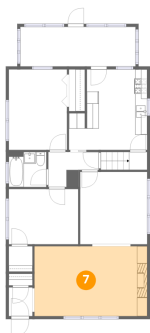
6 Floor 2 - Dining Room



Dimensions: 11'2" x 12'0"
Area: 134 sq. ft
Counted as living area: Yes

Heated: Yes
Finished: Yes
Enclosed: Yes
Contiguous: Yes
Permitted: Yes
Wet space: No
Addition: No
Conversion: No

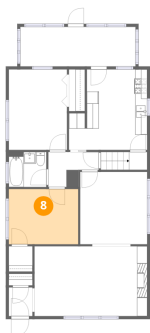
7 Floor 2 - Living Room



Dimensions: 18'9" x 11'7"
Area: 218 sq. ft
Counted as living area: Yes

Heated: Yes
Finished: Yes
Enclosed: Yes
Contiguous: Yes
Permitted: Yes
Wet space: No
Addition: No
Conversion: No

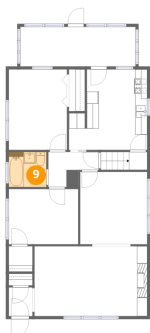
8 Floor 2 - Bedroom



Dimensions: 11'7" x 9'2"
Area: 106 sq. ft
Counted as living area: Yes

Heated: Yes
Finished: Yes
Enclosed: Yes
Contiguous: Yes
Permitted: Yes
Wet space: No
Addition: No
Conversion: No

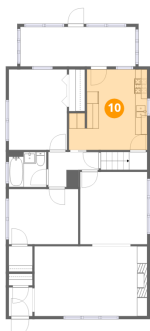
9 Floor 2 - Bath



Dimensions: 6'3" x 5'10"
Area: 36 sq. ft
Counted as living area: Yes

Heated: Yes
Finished: Yes
Enclosed: Yes
Contiguous: Yes
Permitted: Yes
Wet space: Yes
Addition: No
Conversion: No

10 Floor 2 - Kitchen



Dimensions: 13'0" x 13'5"
Area: 152 sq. ft
Counted as living area: Yes

Heated: Yes
Finished: Yes
Enclosed: Yes
Contiguous: Yes
Permitted: Yes
Wet space: No
Addition: No
Conversion: No

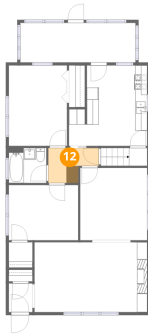
11 Floor 2 - Primary Bedroom



Dimensions: 9'8" x 13'5"
Area: 129 sq. ft
Counted as living area: Yes

Heated: Yes
Finished: Yes
Enclosed: Yes
Contiguous: Yes
Permitted: Yes
Wet space: No
Addition: No
Conversion: No

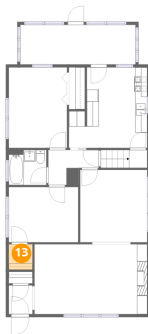
12 Floor 2 - Hall



Dimensions: 8'5" x 5'10"
Area: 39 sq. ft
Counted as living area: Yes

Heated: Yes
Finished: Yes
Enclosed: Yes
Contiguous: Yes
Permitted: Yes
Wet space: No
Addition: No
Conversion: No

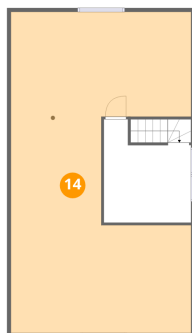
13 Floor 2 - W.I.C.



Dimensions: 3'11" x 4'3"
Area: 17 sq. ft
Counted as living area: Yes

Heated: Yes
Finished: Yes
Enclosed: Yes
Contiguous: Yes
Permitted: Yes
Wet space: No
Addition: No
Conversion: No

14 Floor 3 - Attic



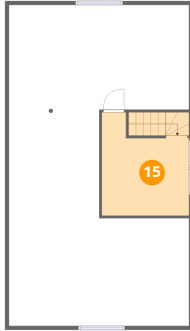
Dimensions: 23'0" x 41'0"
Area: 785 sq. ft
Counted as living area: No

Heated: No
Finished: No
Enclosed: Yes
Contiguous: Yes
Permitted: Yes
Wet space: No
Addition: No
Conversion: No

Home data report

285 Forest Avenue, Glen Ellyn, DuPage County, Illinois, United States, 60137

15 Floor 3 - Room



Dimensions: 11'2" x 13'2"
Area: 144 sq. ft
Counted as living area: Yes

Heated: Yes
Finished: Yes
Enclosed: Yes
Contiguous: Yes
Permitted: Yes
Wet space: No
Addition: No
Conversion: No