

Home data report

4936 Cove Valley Drive Southeast, Owens Cross Roads,
Madison County, Alabama, United States, 35763



Total Area: 3215 sq. ft

1st Floor: 2802 sq. ft, 2nd Floor: 413 sq. ft

Excluded: Garage 549 sq. ft, Porch 24 sq. ft, Patio 297 sq. ft, Fireplace 13 sq. ft, Attic 753 sq. ft

Property summary



Home data report

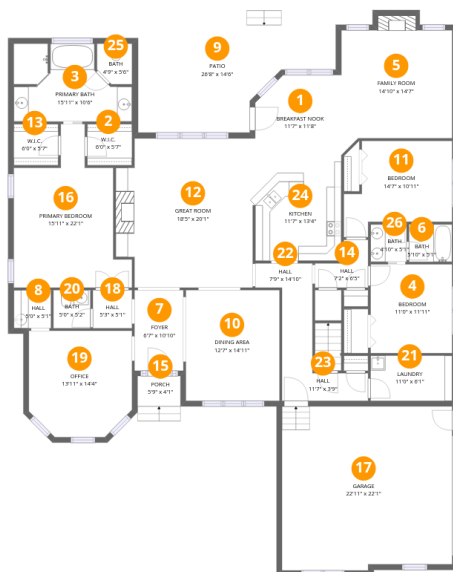
**4936 Cove Valley Drive Southeast, Owens Cross Roads,
Madison County, Alabama, United States, 35763**

 **1**
Half baths

 **1**
Garages

Home data report

**4936 Cove Valley Drive Southeast, Owens Cross Roads,
Madison County, Alabama, United States, 35763**



Room dimensions

Floor 1

Total:2802sqft Excluded: 883sqft

#		Dimensions	sqft	Counted as living area
1	Breakfast Nook	11'7" x 11'8"	129 sq. ft	Yes
2	W.I.C.	6'0" x 5'7"	34 sq. ft	Yes
3	Primary Bath	15'11" x 10'6"	138 sq. ft	Yes
4	Bedroom	11'0" x 11'11"	132 sq. ft	Yes
5	Family Room	14'10" x 14'7"	230 sq. ft	Yes
6	Bath	5'10" x 5'1"	29 sq. ft	Yes
7	Foyer	6'7" x 10'10"	72 sq. ft	Yes
8	Hall	5'0" x 5'1"	26 sq. ft	Yes
9	Patio	26'8" x 14'6"	297 sq. ft	No
10	Dining Area	12'7" x 14'11"	188 sq. ft	Yes
11	Bedroom	14'7" x 10'11"	149 sq. ft	Yes

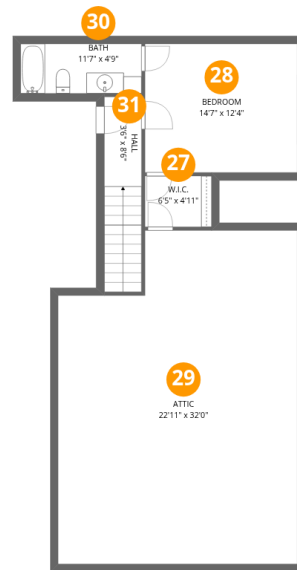
Home data report

**4936 Cove Valley Drive Southeast, Owens Cross Roads,
Madison County, Alabama, United States, 35763**

#		Dimensions	sqft	Counted as living area
12	Great Room	18'5" x 20'1"	354 sq. ft	Yes
13	W.I.C.	6'0" x 5'7"	33 sq. ft	Yes
14	Hall	7'2" x 6'5"	34 sq. ft	Yes
15	Porch	5'9" x 4'1"	24 sq. ft	No
16	Primary Bedroom	15'11" x 22'1"	245 sq. ft	Yes
17	Garage	22'11" x 22'1"	497 sq. ft	No
18	Hall	5'3" x 5'1"	27 sq. ft	Yes
19	Office	13'11" x 14'4"	186 sq. ft	Yes
20	Bath	5'0" x 5'2"	26 sq. ft	Yes
21	Laundry	11'0" x 6'1"	67 sq. ft	Yes
22	Hall	7'9" x 14'10"	73 sq. ft	Yes
23	Hall	11'7" x 3'9"	43 sq. ft	Yes
24	Kitchen	11'7" x 13'4"	155 sq. ft	Yes
25	Bath	4'9" x 5'6"	24 sq. ft	Yes
26	Bath	4'10" x 5'1"	24 sq. ft	Yes

Home data report

**4936 Cove Valley Drive Southeast, Owens Cross Roads,
Madison County, Alabama, United States, 35763**



Room dimensions

Floor 2

Total:413sqft

Excluded: 753sqft

#		Dimensions	sqft	Counted as living area
27	W.I.C.	6'5" x 4'11"	31 sq. ft	Yes
28	Bedroom	14'7" x 12'4"	180 sq. ft	Yes
29	Attic	22'11" x 32'0"	681 sq. ft	No
30	Bath	11'7" x 4'9"	55 sq. ft	Yes
31	Hall	3'6" x 8'6"	67 sq. ft	Yes

**4936 Cove Valley Drive Southeast, Owens Cross Roads,
Madison County, Alabama, United States, 35763**

1 Floor 1 - Breakfast Nook



Dimensions: 11'7" x 11'8"
Area: 129 sq. ft
Counted as living area: Yes

Heated: Yes
Finished: Yes
Enclosed: Yes
Contiguous: Yes
Permitted: Yes
Wet space: No
Addition: No
Conversion: No

2 Floor 1 - W.I.C.



Dimensions: 6'0" x 5'7"
Area: 34 sq. ft
Counted as living area: Yes

Heated: Yes
Finished: Yes
Enclosed: Yes
Contiguous: Yes
Permitted: Yes
Wet space: No
Addition: No
Conversion: No

4936 Cove Valley Drive Southeast, Owens Cross Roads,
Madison County, Alabama, United States, 35763

3 Floor 1 - Primary Bath



Dimensions: 15'11" x 10'6"
Area: 138 sq. ft
Counted as living area: Yes

Heated: Yes
Finished: Yes
Enclosed: Yes
Contiguous: Yes
Permitted: Yes
Wet space: Yes
Addition: No
Conversion: No

4 Floor 1 - Bedroom



Dimensions: 11'0" x 11'11"
Area: 132 sq. ft
Counted as living area: Yes

Heated: Yes
Finished: Yes
Enclosed: Yes
Contiguous: Yes
Permitted: Yes
Wet space: No
Addition: No
Conversion: No

5 Floor 1 - Family Room



Dimensions: 14'10" x 14'7"
Area: 230 sq. ft
Counted as living area: Yes

Heated: Yes
Finished: Yes
Enclosed: Yes
Contiguous: Yes
Permitted: Yes
Wet space: No
Addition: No
Conversion: No

4936 Cove Valley Drive Southeast, Owens Cross Roads,
Madison County, Alabama, United States, 35763

6 Floor 1 - Bath



Dimensions: 5'10" x 5'1"
Area: 29 sq. ft
Counted as living area: Yes

Heated: Yes
Finished: Yes
Enclosed: Yes
Contiguous: Yes
Permitted: Yes
Wet space: Yes
Addition: No
Conversion: No

7 Floor 1 - Foyer



Dimensions: 6'7" x 10'10"
Area: 72 sq. ft
Counted as living area: Yes

Heated: Yes
Finished: Yes
Enclosed: Yes
Contiguous: Yes
Permitted: Yes
Wet space: No
Addition: No
Conversion: No

8 Floor 1 - Hall



Dimensions: 5'0" x 5'1"
Area: 26 sq. ft
Counted as living area: Yes

Heated: Yes
Finished: Yes
Enclosed: Yes
Contiguous: Yes
Permitted: Yes
Wet space: No
Addition: No
Conversion: No

4936 Cove Valley Drive Southeast, Owens Cross Roads,
Madison County, Alabama, United States, 35763

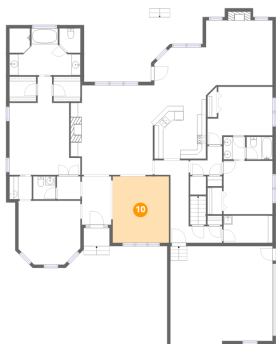
9 Floor 1 - Patio



Dimensions: 26'8" x 14'6"
Area: 297 sq. ft
Counted as living area: No

Heated: No
Finished: No
Enclosed: No
Contiguous: Yes
Permitted: Yes
Wet space: No
Addition: No
Conversion: No

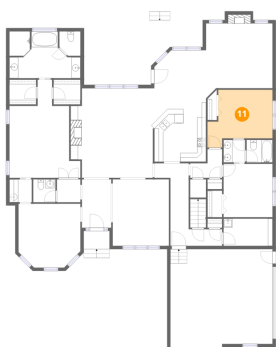
10 Floor 1 - Dining Area



Dimensions: 12'7" x 14'11"
Area: 188 sq. ft
Counted as living area: Yes

Heated: Yes
Finished: Yes
Enclosed: Yes
Contiguous: Yes
Permitted: Yes
Wet space: No
Addition: No
Conversion: No

11 Floor 1 - Bedroom

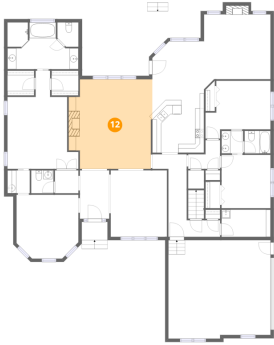


Dimensions: 14'7" x 10'11"
Area: 149 sq. ft
Counted as living area: Yes

Heated: Yes
Finished: Yes
Enclosed: Yes
Contiguous: Yes
Permitted: Yes
Wet space: No
Addition: No
Conversion: No

4936 Cove Valley Drive Southeast, Owens Cross Roads,
Madison County, Alabama, United States, 35763

12 Floor 1 - Great Room



Dimensions: 18'5" x 20'1"
Area: 354 sq. ft
Counted as living area: Yes

Heated: Yes
Finished: Yes
Enclosed: Yes
Contiguous: Yes
Permitted: Yes
Wet space: No
Addition: No
Conversion: No

13 Floor 1 - W.I.C.



Dimensions: 6'0" x 5'7"
Area: 33 sq. ft
Counted as living area: Yes

Heated: Yes
Finished: Yes
Enclosed: Yes
Contiguous: Yes
Permitted: Yes
Wet space: No
Addition: No
Conversion: No

14 Floor 1 - Hall



Dimensions: 7'2" x 6'5"
Area: 34 sq. ft
Counted as living area: Yes

Heated: Yes
Finished: Yes
Enclosed: Yes
Contiguous: Yes
Permitted: Yes
Wet space: No
Addition: No
Conversion: No

4936 Cove Valley Drive Southeast, Owens Cross Roads,
Madison County, Alabama, United States, 35763

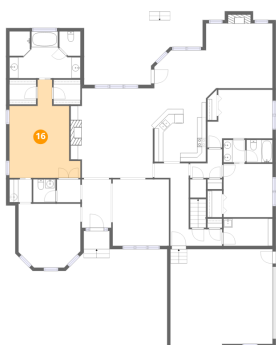
15 Floor 1 - Porch



Dimensions: 5'9" x 4'1"
Area: 24 sq. ft
Counted as living area: No

Heated: No
Finished: No
Enclosed: No
Contiguous: Yes
Permitted: Yes
Wet space: No
Addition: No
Conversion: No

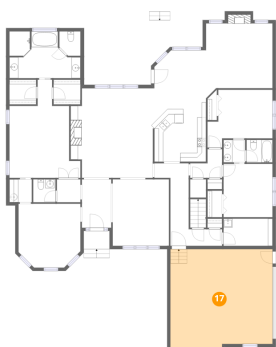
16 Floor 1 - Primary Bedroom



Dimensions: 15'11" x 22'1"
Area: 245 sq. ft
Counted as living area: Yes

Heated: Yes
Finished: Yes
Enclosed: Yes
Contiguous: Yes
Permitted: Yes
Wet space: No
Addition: No
Conversion: No

17 Floor 1 - Garage



Dimensions: 22'11" x 22'1"
Area: 497 sq. ft
Counted as living area: No

Heated: No
Finished: No
Enclosed: Yes
Contiguous: Yes
Permitted: Yes
Wet space: No
Addition: No
Conversion: No

4936 Cove Valley Drive Southeast, Owens Cross Roads,
Madison County, Alabama, United States, 35763

18 Floor 1 - Hall



Dimensions: 5'3" x 5'1"
Area: 27 sq. ft
Counted as living area: Yes

Heated: Yes
Finished: Yes
Enclosed: Yes
Contiguous: Yes
Permitted: Yes
Wet space: No
Addition: No
Conversion: No

19 Floor 1 - Office



Dimensions: 13'11" x 14'4"
Area: 186 sq. ft
Counted as living area: Yes

Heated: Yes
Finished: Yes
Enclosed: Yes
Contiguous: Yes
Permitted: Yes
Wet space: No
Addition: No
Conversion: No

20 Floor 1 - Bath

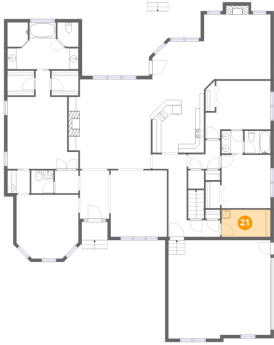


Dimensions: 5'0" x 5'2"
Area: 26 sq. ft
Counted as living area: Yes

Heated: Yes
Finished: Yes
Enclosed: Yes
Contiguous: Yes
Permitted: Yes
Wet space: Yes
Addition: No
Conversion: No

4936 Cove Valley Drive Southeast, Owens Cross Roads,
Madison County, Alabama, United States, 35763

21 Floor 1 - Laundry



Dimensions: 11'0" x 6'1"
Area: 67 sq. ft
Counted as living area: Yes

Heated: Yes
Finished: Yes
Enclosed: Yes
Contiguous: Yes
Permitted: Yes
Wet space: No
Addition: No
Conversion: No

22 Floor 1 - Hall



Dimensions: 7'9" x 14'10"
Area: 73 sq. ft
Counted as living area: Yes

Heated: Yes
Finished: Yes
Enclosed: Yes
Contiguous: Yes
Permitted: Yes
Wet space: No
Addition: No
Conversion: No

23 Floor 1 - Hall



Dimensions: 11'7" x 3'9"
Area: 43 sq. ft
Counted as living area: Yes

Heated: Yes
Finished: Yes
Enclosed: Yes
Contiguous: Yes
Permitted: Yes
Wet space: No
Addition: No
Conversion: No

4936 Cove Valley Drive Southeast, Owens Cross Roads,
Madison County, Alabama, United States, 35763

24 Floor 1 - Kitchen



Dimensions: 11'7" x 13'4"
Area: 155 sq. ft
Counted as living area: Yes

Heated: Yes
Finished: Yes
Enclosed: Yes
Contiguous: Yes
Permitted: Yes
Wet space: No
Addition: No
Conversion: No

25 Floor 1 - Bath



Dimensions: 4'9" x 5'6"
Area: 24 sq. ft
Counted as living area: Yes

Heated: Yes
Finished: Yes
Enclosed: Yes
Contiguous: Yes
Permitted: Yes
Wet space: Yes
Addition: No
Conversion: No

26 Floor 1 - Bath

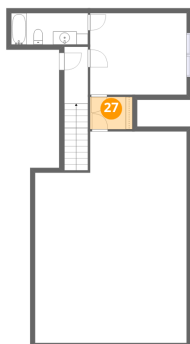


Dimensions: 4'10" x 5'1"
Area: 24 sq. ft
Counted as living area: Yes

Heated: Yes
Finished: Yes
Enclosed: Yes
Contiguous: Yes
Permitted: Yes
Wet space: Yes
Addition: No
Conversion: No

4936 Cove Valley Drive Southeast, Owens Cross Roads,
Madison County, Alabama, United States, 35763

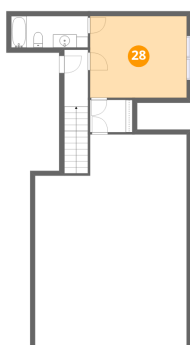
27 Floor 2 - W.I.C.



Dimensions: 6'5" x 4'11"
Area: 31 sq. ft
Counted as living area: Yes

Heated: Yes
Finished: Yes
Enclosed: Yes
Contiguous: Yes
Permitted: Yes
Wet space: No
Addition: No
Conversion: No

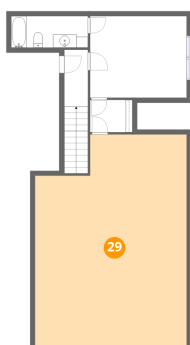
28 Floor 2 - Bedroom



Dimensions: 14'7" x 12'4"
Area: 180 sq. ft
Counted as living area: Yes

Heated: Yes
Finished: Yes
Enclosed: Yes
Contiguous: Yes
Permitted: Yes
Wet space: No
Addition: No
Conversion: No

29 Floor 2 - Attic

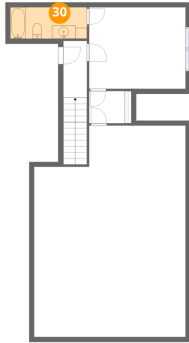


Dimensions: 22'11" x 32'0"
Area: 681 sq. ft
Counted as living area: No

Heated: No
Finished: No
Enclosed: Yes
Contiguous: Yes
Permitted: Yes
Wet space: No
Addition: No
Conversion: No

4936 Cove Valley Drive Southeast, Owens Cross Roads,
Madison County, Alabama, United States, 35763

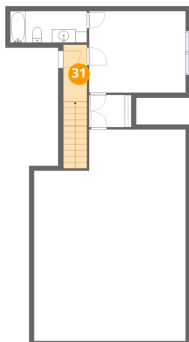
30 Floor 2 - Bath



Dimensions: 11'7" x 4'9"
Area: 55 sq. ft
Counted as living area: Yes

Heated: Yes
Finished: Yes
Enclosed: Yes
Contiguous: Yes
Permitted: Yes
Wet space: Yes
Addition: No
Conversion: No

31 Floor 2 - Hall



Dimensions: 3'6" x 8'6"
Area: 67 sq. ft
Counted as living area: Yes

Heated: Yes
Finished: Yes
Enclosed: Yes
Contiguous: Yes
Permitted: Yes
Wet space: No
Addition: No
Conversion: No