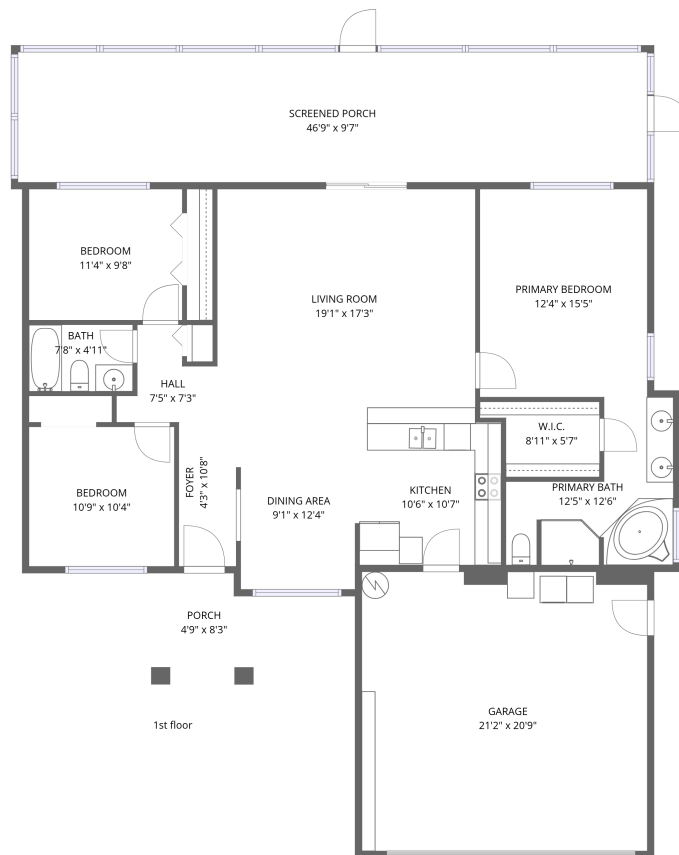


Home data report

**31706 Hunt Club Lane, Wesley Chapel, Pasco County, Florida,
United States, 33543**

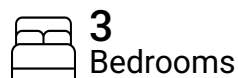


Total Area: 1322 sq. ft

1st Floor: 1322 sq. ft

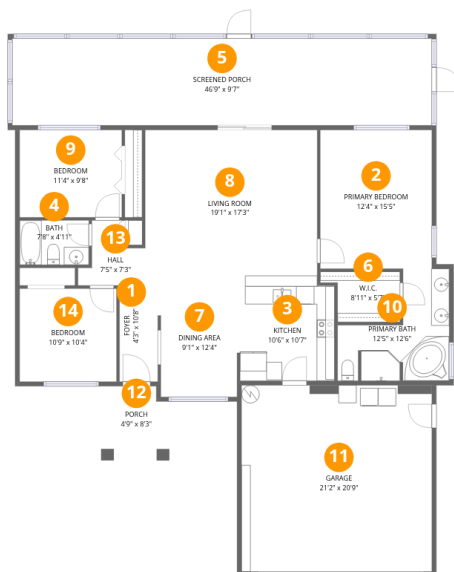
Excluded: Garage 439 sq. ft, Screened porch 452 sq. ft, Porch 39 sq. ft, Walls: 143 sq. ft

Property summary



Home data report

31706 Hunt Club Lane, Wesley Chapel, Pasco County, Florida, United States, 33543



Room dimensions

Floor 1

Total:1322sqft Excluded: 930sqft

#		Dimensions	sqft	Counted as living area
1	Foyer	4'3" x 10'8"	45 sq. ft	Yes
2	Primary Bedroom	12'4" x 15'5"	191 sq. ft	Yes
3	Kitchen	10'6" x 10'7"	111 sq. ft	Yes
4	Bath	7'8" x 4'11"	38 sq. ft	Yes
5	Screened Porch	46'9" x 9'7"	449 sq. ft	No
6	W.I.C.	8'11" x 5'7"	50 sq. ft	Yes
7	Dining Area	9'1" x 12'4"	112 sq. ft	Yes
8	Living Room	19'1" x 17'3"	331 sq. ft	Yes
9	Bedroom	11'4" x 9'8"	110 sq. ft	Yes
10	Primary Bath	12'5" x 12'6"	155 sq. ft	Yes
11	Garage	21'2" x 20'9"	439 sq. ft	No

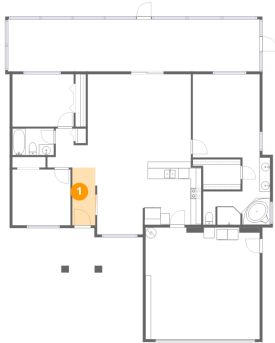
Home data report

**31706 Hunt Club Lane, Wesley Chapel, Pasco County, Florida,
United States, 33543**

#		Dimensions	sqft	Counted as living area
12	Porch	4'9" x 8'3"	39 sq. ft	No
13	Hall	7'5" x 7'3"	54 sq. ft	Yes
14	Bedroom	10'9" x 10'4"	111 sq. ft	Yes

31706 Hunt Club Lane, Wesley Chapel, Pasco County, Florida,
United States, 33543

1 Floor 1 - Foyer



Dimensions: 4'3" x 10'8"
Area: 45 sq. ft
Counted as living area: Yes

Heated: Yes
Finished: Yes
Enclosed: Yes
Contiguous: Yes
Permitted: Yes
Wet space: No
Addition: No
Conversion: No

2 Floor 1 - Primary Bedroom

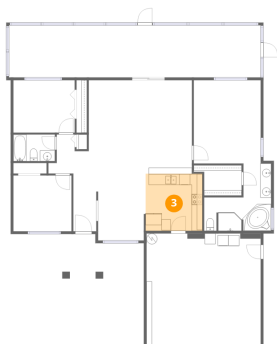


Dimensions: 12'4" x 15'5"
Area: 191 sq. ft
Counted as living area: Yes

Heated: Yes
Finished: Yes
Enclosed: Yes
Contiguous: Yes
Permitted: Yes
Wet space: No
Addition: No
Conversion: No

31706 Hunt Club Lane, Wesley Chapel, Pasco County, Florida,
United States, 33543

3 Floor 1 - Kitchen



Dimensions: 10'6" x 10'7"
Area: 111 sq. ft
Counted as living area: Yes

Heated: Yes
Finished: Yes
Enclosed: Yes
Contiguous: Yes
Permitted: Yes
Wet space: No
Addition: No
Conversion: No

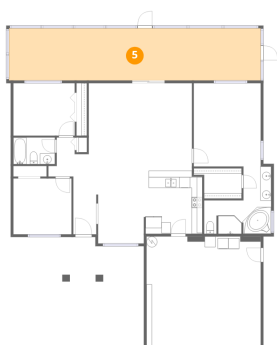
4 Floor 1 - Bath



Dimensions: 7'8" x 4'11"
Area: 38 sq. ft
Counted as living area: Yes

Heated: Yes
Finished: Yes
Enclosed: Yes
Contiguous: Yes
Permitted: Yes
Wet space: Yes
Addition: No
Conversion: No

5 Floor 1 - Screened Porch

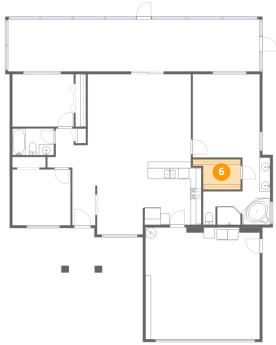


Dimensions: 46'9" x 9'7"
Area: 449 sq. ft
Counted as living area: No

Heated: No
Finished: No
Enclosed: No
Contiguous: Yes
Permitted: Yes
Wet space: No
Addition: No
Conversion: No

31706 Hunt Club Lane, Wesley Chapel, Pasco County, Florida,
United States, 33543

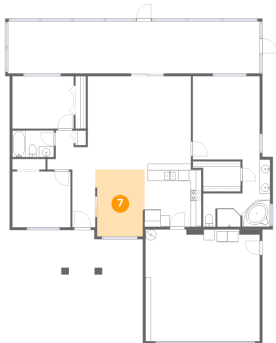
6 Floor 1 - W.I.C.



Dimensions: 8'11" x 5'7"
Area: 50 sq. ft
Counted as living area: Yes

Heated: Yes
Finished: Yes
Enclosed: Yes
Contiguous: Yes
Permitted: Yes
Wet space: No
Addition: No
Conversion: No

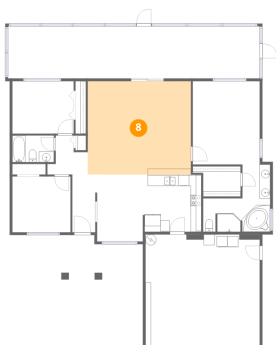
7 Floor 1 - Dining Area



Dimensions: 9'1" x 12'4"
Area: 112 sq. ft
Counted as living area: Yes

Heated: Yes
Finished: Yes
Enclosed: Yes
Contiguous: Yes
Permitted: Yes
Wet space: No
Addition: No
Conversion: No

8 Floor 1 - Living Room



Dimensions: 19'1" x 17'3"
Area: 331 sq. ft
Counted as living area: Yes

Heated: Yes
Finished: Yes
Enclosed: Yes
Contiguous: Yes
Permitted: Yes
Wet space: No
Addition: No
Conversion: No

31706 Hunt Club Lane, Wesley Chapel, Pasco County, Florida,
United States, 33543

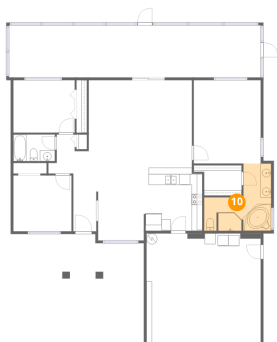
9 Floor 1 - Bedroom



Dimensions: 11'4" x 9'8"
Area: 110 sq. ft
Counted as living area: Yes

Heated: Yes
Finished: Yes
Enclosed: Yes
Contiguous: Yes
Permitted: Yes
Wet space: No
Addition: No
Conversion: No

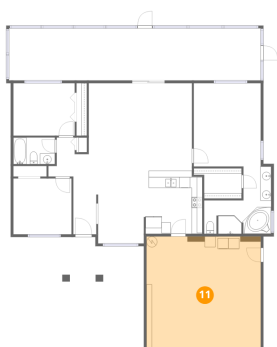
10 Floor 1 - Primary Bath



Dimensions: 12'5" x 12'6"
Area: 155 sq. ft
Counted as living area: Yes

Heated: Yes
Finished: Yes
Enclosed: Yes
Contiguous: Yes
Permitted: Yes
Wet space: Yes
Addition: No
Conversion: No

11 Floor 1 - Garage



Dimensions: 21'2" x 20'9"
Area: 439 sq. ft
Counted as living area: No

Heated: No
Finished: No
Enclosed: Yes
Contiguous: Yes
Permitted: Yes
Wet space: No
Addition: No
Conversion: No

31706 Hunt Club Lane, Wesley Chapel, Pasco County, Florida, United States, 33543

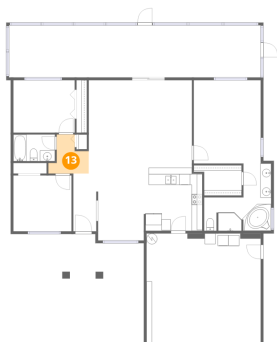
12 Floor 1 - Porch



Dimensions: 4'9" x 8'3"
Area: 39 sq. ft
Counted as living area: No

Heated: No
Finished: No
Enclosed: No
Contiguous: Yes
Permitted: Yes
Wet space: No
Addition: No
Conversion: No

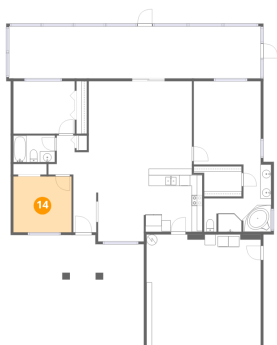
13 Floor 1 - Hall



Dimensions: 7'5" x 7'3"
Area: 54 sq. ft
Counted as living area: Yes

Heated: Yes
Finished: Yes
Enclosed: Yes
Contiguous: Yes
Permitted: Yes
Wet space: No
Addition: No
Conversion: No

14 Floor 1 - Bedroom



Dimensions: 10'9" x 10'4"
Area: 111 sq. ft
Counted as living area: Yes

Heated: Yes
Finished: Yes
Enclosed: Yes
Contiguous: Yes
Permitted: Yes
Wet space: No
Addition: No
Conversion: No