

Home data report

1005 Chestnut Mountain Drive, Vinton, Virginia 24179, United States



Total Area: 2842 sq. ft

1st Floor: 514 sq. ft, 2nd Floor: 1175 sq. ft, 3rd Floor: 1153 sq. ft

Excluded: Garage 560 sq. ft, Storage 86 sq. ft, Covered patio 332 sq. ft, Fireplace 45 sq. ft, Deck 326 sq. ft, Porch 412 sq. ft, Balcony 125 sq. ft, Open to below 17 sq. ft, Walls: 215 sq. ft

Property summary



Home data report

1005 Chestnut Mountain Drive, Vinton, Virginia 24179, United States



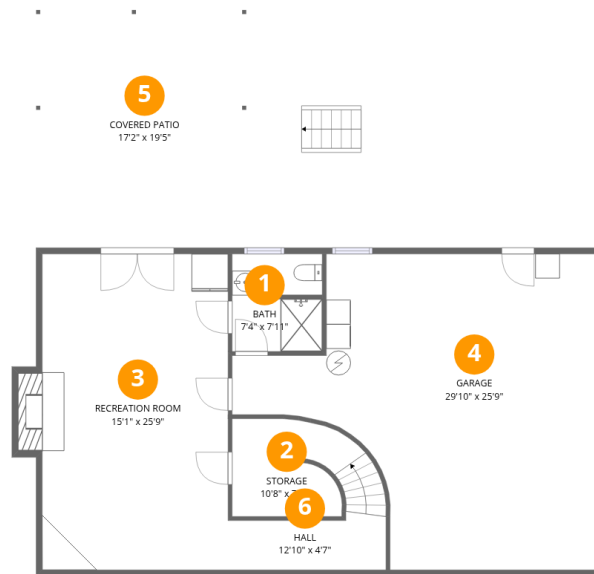
1
Half baths



1
Garages

Home data report

1005 Chestnut Mountain Drive, Vinton, Virginia 24179, United States



Room dimensions

Floor 1

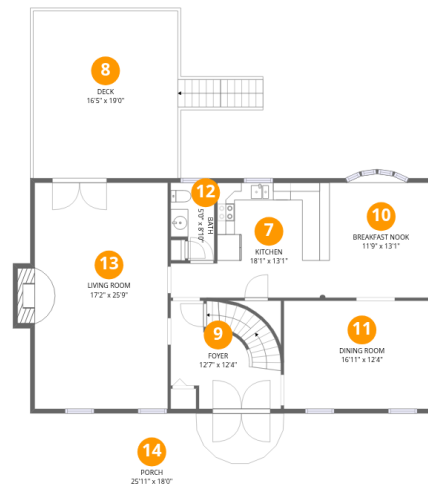
Total:514sqft

Excluded: 993sqft

#		Dimensions	sqft	Counted as living area
1	Bath	7'4" x 7'11"	58 sq. ft	Yes
2	Storage	10'8" x 7'11"	85 sq. ft	No
3	Recreation Room	15'1" x 25'9"	389 sq. ft	Yes
4	Garage	29'10" x 25'9"	768 sq. ft	No
5	Covered Patio	17'2" x 19'5"	332 sq. ft	No
6	Hall	12'10" x 4'7"	59 sq. ft	Yes

Home data report

1005 Chestnut Mountain Drive, Vinton, Virginia 24179, United States



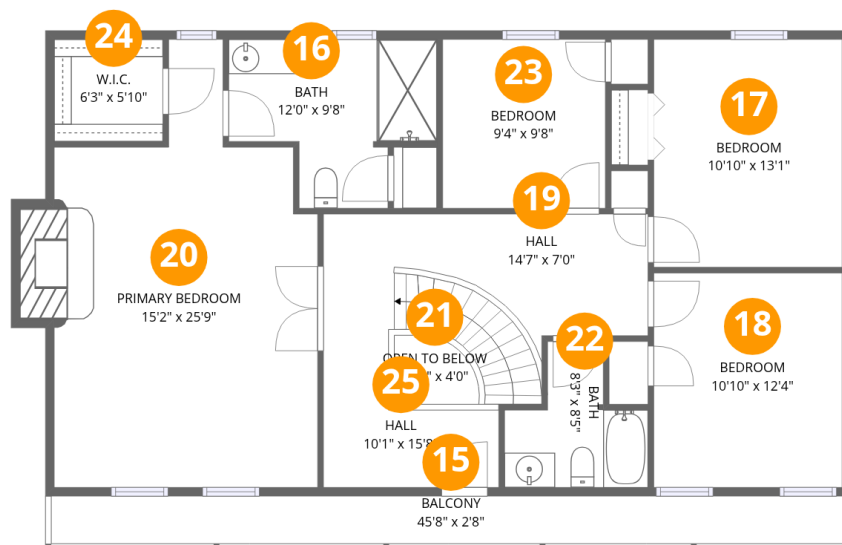
Room dimensions

Floor 2

Total:1175sqft Excluded: 753sqft

#		Dimensions	sqft	Counted as living area
7	Kitchen	18'1" x 13'1"	237 sq. ft	Yes
8	Deck	16'5" x 19'0"	312 sq. ft	No
9	Foyer	12'7" x 12'4"	155 sq. ft	Yes
10	Breakfast Nook	11'9" x 13'1"	154 sq. ft	Yes
11	Dining Room	16'11" x 12'4"	209 sq. ft	Yes
12	Bath	5'0" x 8'10"	44 sq. ft	Yes
13	Living Room	17'2" x 25'9"	441 sq. ft	Yes
14	Porch	25'11" x 18'0"	466 sq. ft	No

1005 Chestnut Mountain Drive, Vinton, Virginia 24179, United States



Room dimensions

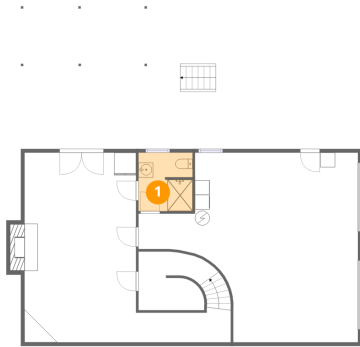
Floor 3

Total:1153sqft Excluded: 157sqft

#		Dimensions	sqft	Counted as living area
15	Balcony	45'8" x 2'8"	122 sq. ft	No
16	Bath	12'0" x 9'8"	116 sq. ft	Yes
17	Bedroom	10'10" x 13'1"	142 sq. ft	Yes
18	Bedroom	10'10" x 12'4"	133 sq. ft	Yes
19	Hall	14'7" x 7'0"	102 sq. ft	Yes
20	Primary Bedroom	15'2" x 25'9"	390 sq. ft	Yes
21	Open To Below	4'11" x 4'0"	19 sq. ft	No
22	Bath	8'3" x 8'5"	69 sq. ft	Yes
23	Bedroom	9'4" x 9'8"	91 sq. ft	Yes
24	W.I.C.	6'3" x 5'10"	36 sq. ft	Yes
25	Hall	10'1" x 15'8"	158 sq. ft	Yes

1005 Chestnut Mountain Drive, Vinton, Virginia 24179, United States

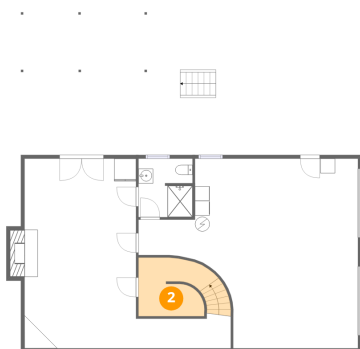
1 Floor 1 - Bath



Dimensions: 7'4" x 7'11"
Area: 58 sq. ft
Counted as living area: Yes

Heated: Yes
Finished: Yes
Enclosed: Yes
Contiguous: Yes
Permitted: Yes
Wet space: Yes
Addition: No
Conversion: No

2 Floor 1 - Storage

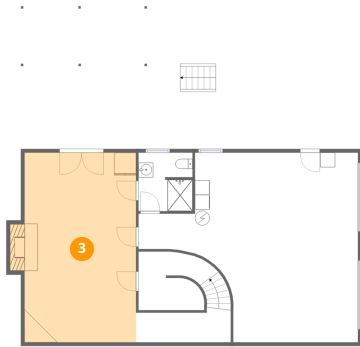


Dimensions: 10'8" x 7'11"
Area: 85 sq. ft
Counted as living area: No

Heated: No
Finished: No
Enclosed: No
Contiguous: Yes
Permitted: Yes
Wet space: No
Addition: No
Conversion: No

1005 Chestnut Mountain Drive, Vinton, Virginia 24179, United States

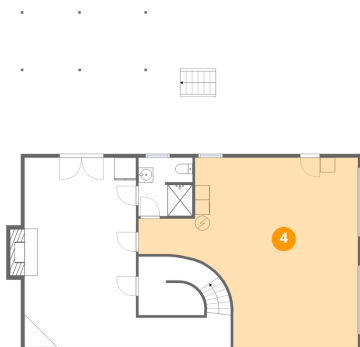
3 Floor 1 - Recreation Room



Dimensions: 15'1" x 25'9"
Area: 389 sq. ft
Counted as living area: Yes

Heated: Yes
Finished: Yes
Enclosed: Yes
Contiguous: Yes
Permitted: Yes
Wet space: No
Addition: No
Conversion: No

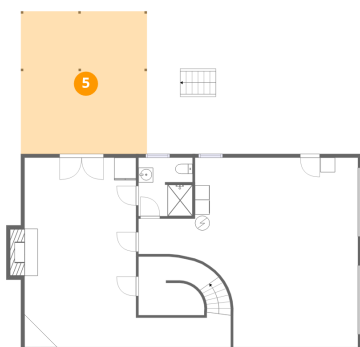
4 Floor 1 - Garage



Dimensions: 29'10" x 25'9"
Area: 768 sq. ft
Counted as living area: No

Heated: No
Finished: No
Enclosed: Yes
Contiguous: Yes
Permitted: Yes
Wet space: No
Addition: No
Conversion: No

5 Floor 1 - Covered Patio

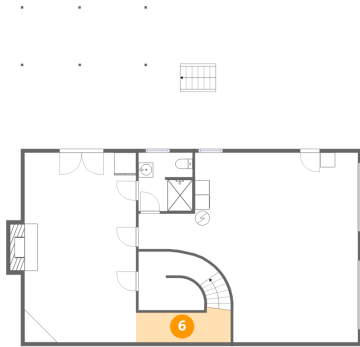


Dimensions: 17'2" x 19'5"
Area: 332 sq. ft
Counted as living area: No

Heated: No
Finished: No
Enclosed: No
Contiguous: Yes
Permitted: Yes
Wet space: No
Addition: No
Conversion: No

1005 Chestnut Mountain Drive, Vinton, Virginia 24179, United States

6 Floor 1 - Hall



Dimensions: 12'10" x 4'7"
Area: 59 sq. ft
Counted as living area: Yes

Heated: Yes
Finished: Yes
Enclosed: Yes
Contiguous: Yes
Permitted: Yes
Wet space: No
Addition: No
Conversion: No

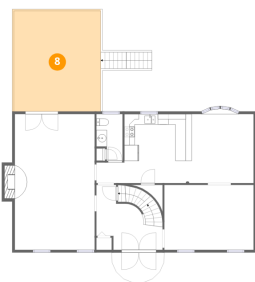
7 Floor 2 - Kitchen



Dimensions: 18'1" x 13'1"
Area: 237 sq. ft
Counted as living area: Yes

Heated: Yes
Finished: Yes
Enclosed: Yes
Contiguous: Yes
Permitted: Yes
Wet space: No
Addition: No
Conversion: No

8 Floor 2 - Deck



Dimensions: 16'5" x 19'0"
Area: 312 sq. ft
Counted as living area: No

Heated: No
Finished: No
Enclosed: No
Contiguous: Yes
Permitted: Yes
Wet space: No
Addition: No
Conversion: No

1005 Chestnut Mountain Drive, Vinton, Virginia 24179, United States

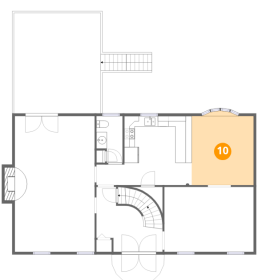
9 Floor 2 - Foyer



Dimensions: 12'7" x 12'4"
Area: 155 sq. ft
Counted as living area: Yes

Heated: Yes
Finished: Yes
Enclosed: Yes
Contiguous: Yes
Permitted: Yes
Wet space: No
Addition: No
Conversion: No

10 Floor 2 - Breakfast Nook



Dimensions: 11'9" x 13'1"
Area: 154 sq. ft
Counted as living area: Yes

Heated: Yes
Finished: Yes
Enclosed: Yes
Contiguous: Yes
Permitted: Yes
Wet space: No
Addition: No
Conversion: No

11 Floor 2 - Dining Room



Dimensions: 16'11" x 12'4"
Area: 209 sq. ft
Counted as living area: Yes

Heated: Yes
Finished: Yes
Enclosed: Yes
Contiguous: Yes
Permitted: Yes
Wet space: No
Addition: No
Conversion: No

1005 Chestnut Mountain Drive, Vinton, Virginia 24179, United States

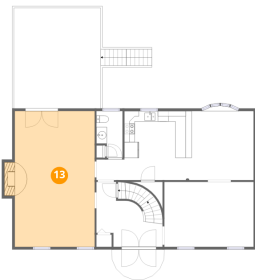
12 Floor 2 - Bath



Dimensions: 5'0" x 8'10"
Area: 44 sq. ft
Counted as living area: Yes

Heated: Yes
Finished: Yes
Enclosed: Yes
Contiguous: Yes
Permitted: Yes
Wet space: Yes
Addition: No
Conversion: No

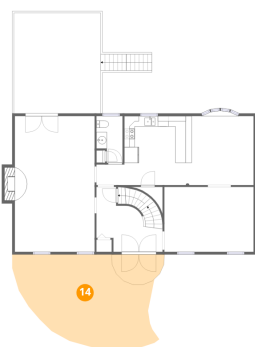
13 Floor 2 - Living Room



Dimensions: 17'2" x 25'9"
Area: 441 sq. ft
Counted as living area: Yes

Heated: Yes
Finished: Yes
Enclosed: Yes
Contiguous: Yes
Permitted: Yes
Wet space: No
Addition: No
Conversion: No

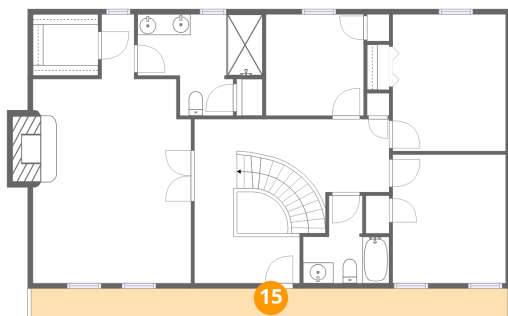
14 Floor 2 - Porch



Dimensions: 25'11" x 18'0"
Area: 466 sq. ft
Counted as living area: No

Heated: No
Finished: No
Enclosed: No
Contiguous: Yes
Permitted: Yes
Wet space: No
Addition: No
Conversion: No

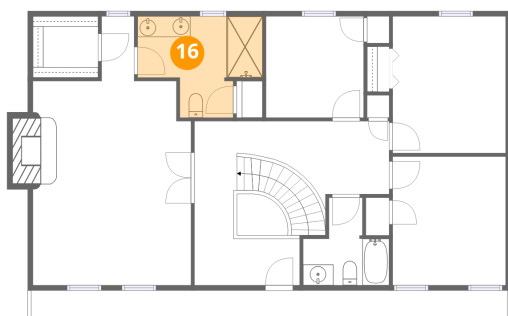
15 Floor 3 - Balcony



Dimensions: 45'8" x 2'8"
Area: 122 sq. ft
Counted as living area: No

Heated: No
Finished: No
Enclosed: No
Contiguous: Yes
Permitted: Yes
Wet space: No
Addition: No
Conversion: No

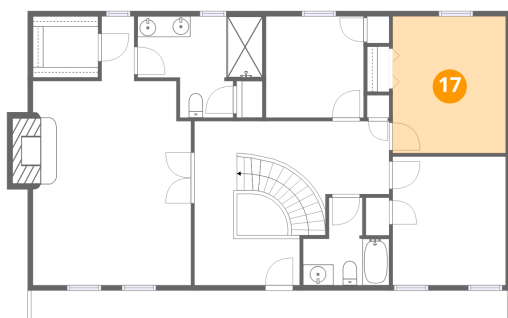
16 Floor 3 - Bath



Dimensions: 12'0" x 9'8"
Area: 116 sq. ft
Counted as living area: Yes

Heated: Yes
Finished: Yes
Enclosed: Yes
Contiguous: Yes
Permitted: Yes
Wet space: Yes
Addition: No
Conversion: No

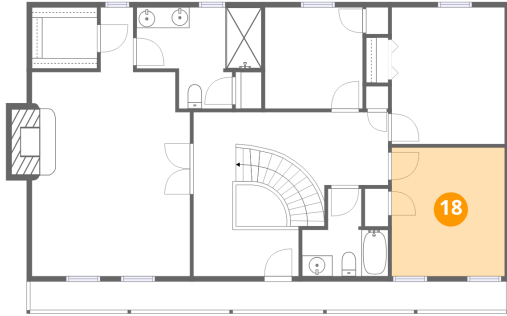
17 Floor 3 - Bedroom



Dimensions: 10'10" x 13'1"
Area: 142 sq. ft
Counted as living area: Yes

Heated: Yes
Finished: Yes
Enclosed: Yes
Contiguous: Yes
Permitted: Yes
Wet space: No
Addition: No
Conversion: No

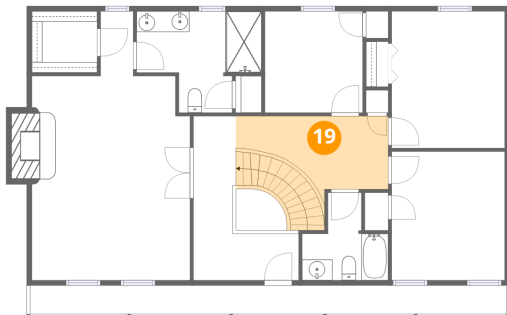
18 Floor 3 - Bedroom



Dimensions: 10'10" x 12'4"
Area: 133 sq. ft
Counted as living area: Yes

Heated: Yes
Finished: Yes
Enclosed: Yes
Contiguous: Yes
Permitted: Yes
Wet space: No
Addition: No
Conversion: No

19 Floor 3 - Hall



Dimensions: 14'7" x 7'0"
Area: 102 sq. ft
Counted as living area: Yes

Heated: Yes
Finished: Yes
Enclosed: Yes
Contiguous: Yes
Permitted: Yes
Wet space: No
Addition: No
Conversion: No

20 Floor 3 - Primary Bedroom

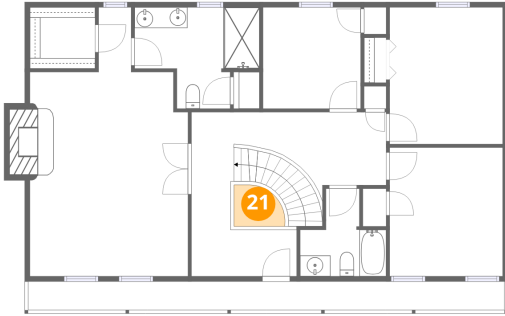


Dimensions: 15'2" x 25'9"
Area: 390 sq. ft
Counted as living area: Yes

Heated: Yes
Finished: Yes
Enclosed: Yes
Contiguous: Yes
Permitted: Yes
Wet space: No
Addition: No
Conversion: No

1005 Chestnut Mountain Drive, Vinton, Virginia 24179, United States

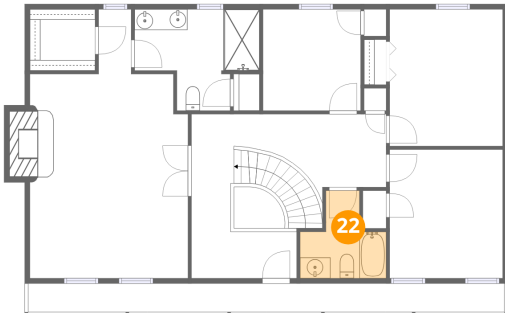
21 Floor 3 - Open To Below



Dimensions: 4'11" x 4'0"
Area: 19 sq. ft
Counted as living area: No

Heated: No
Finished: No
Enclosed: No
Contiguous: Yes
Permitted: No
Wet space: No
Addition: No
Conversion: No

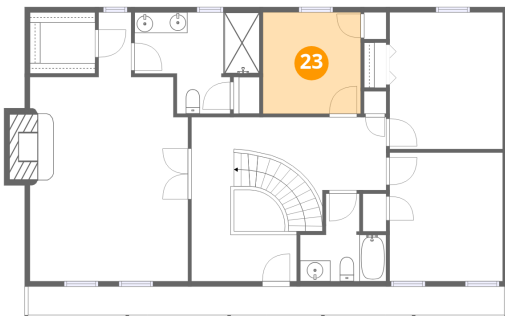
22 Floor 3 - Bath



Dimensions: 8'3" x 8'5"
Area: 69 sq. ft
Counted as living area: Yes

Heated: Yes
Finished: Yes
Enclosed: Yes
Contiguous: Yes
Permitted: Yes
Wet space: Yes
Addition: No
Conversion: No

23 Floor 3 - Bedroom

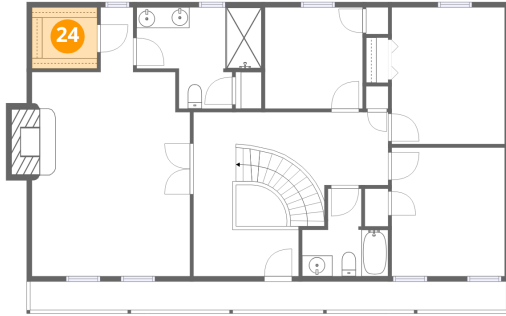


Dimensions: 9'4" x 9'8"
Area: 91 sq. ft
Counted as living area: Yes

Heated: Yes
Finished: Yes
Enclosed: Yes
Contiguous: Yes
Permitted: Yes
Wet space: No
Addition: No
Conversion: No

1005 Chestnut Mountain Drive, Vinton, Virginia 24179, United States

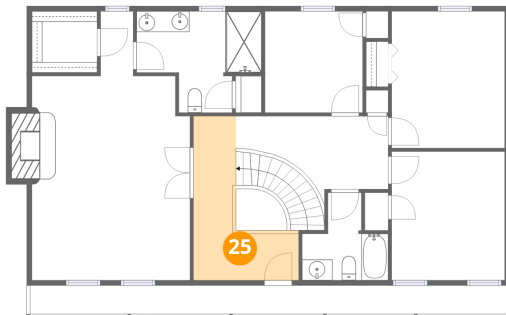
24 Floor 3 - W.I.C.



Dimensions: 6'3" x 5'10"
Area: 36 sq. ft
Counted as living area: Yes

Heated: Yes
Finished: Yes
Enclosed: Yes
Contiguous: Yes
Permitted: Yes
Wet space: No
Addition: No
Conversion: No

25 Floor 3 - Hall



Dimensions: 10'1" x 15'8"
Area: 158 sq. ft
Counted as living area: Yes

Heated: Yes
Finished: Yes
Enclosed: Yes
Contiguous: Yes
Permitted: Yes
Wet space: No
Addition: No
Conversion: No