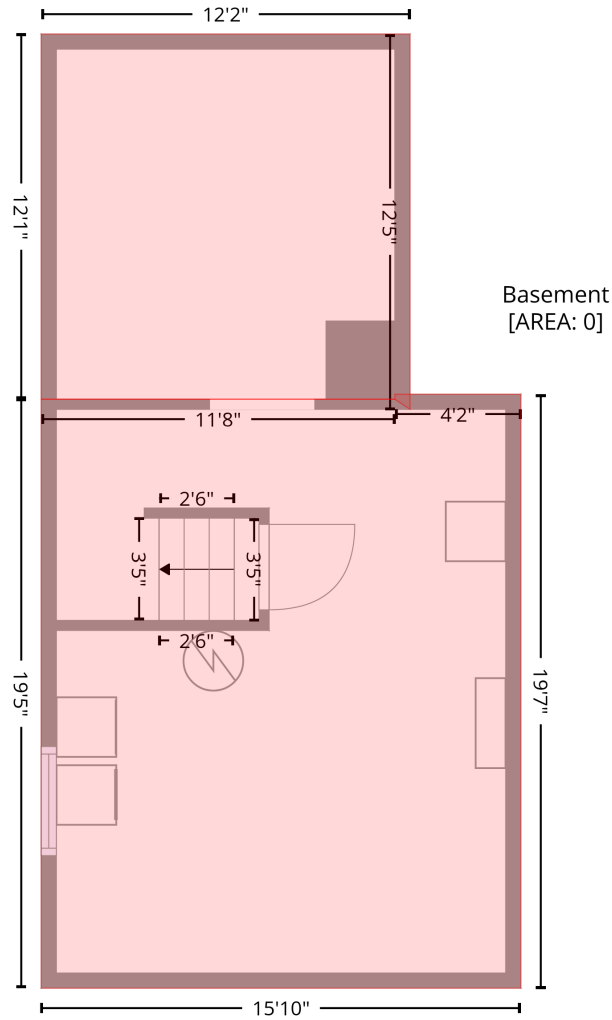


# 307 Victoria Street, Fisher Park, Greensboro, Guilford County, North Carolina, United States, 27401

Gross Living Area: 2035 sq. ft

## Level 1 - Below Grade

BASEMENT (2)  
[AREA: 147]



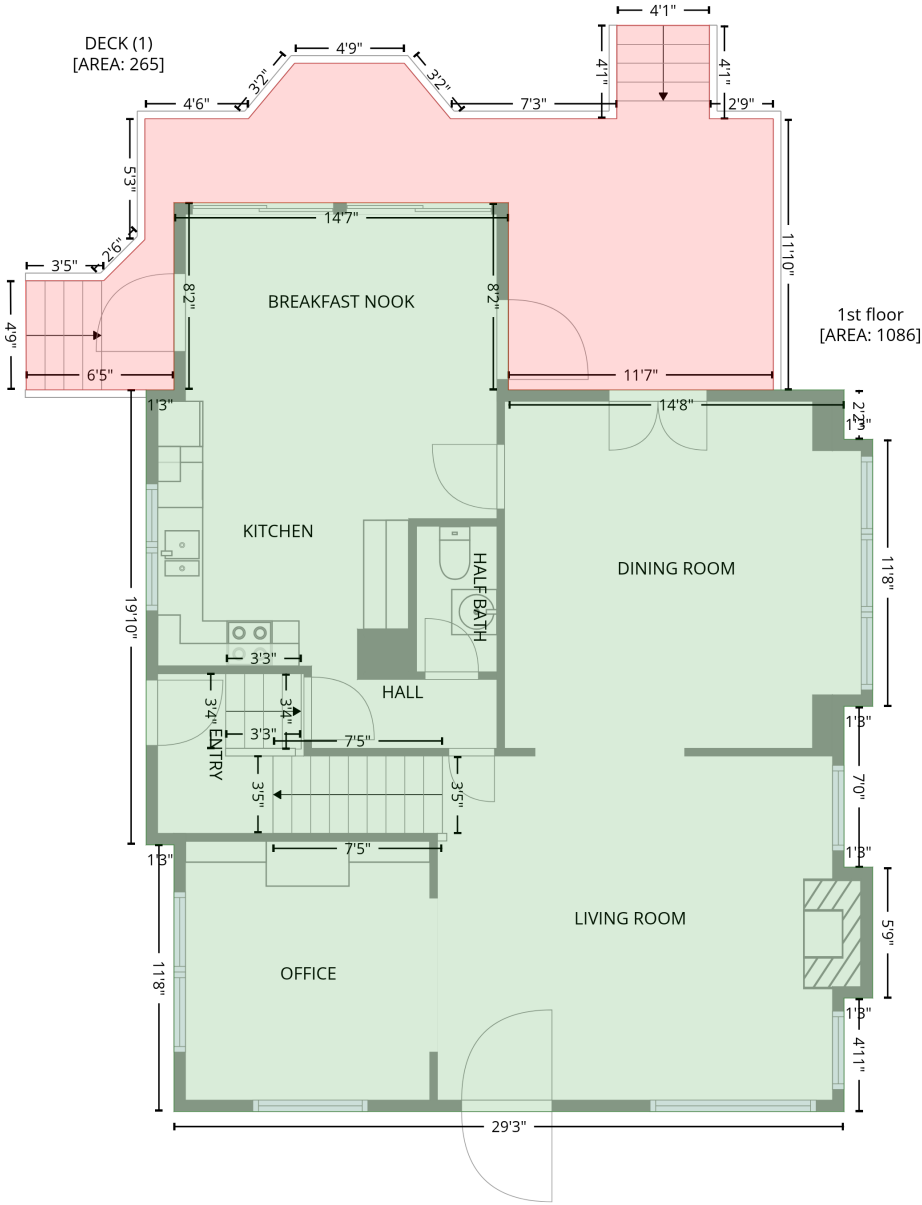
UTILITY (1)  
[AREA: 308]

Space	Area (sq. ft)	Calculation <small>Coordinate Polygon Area Algorithm using inches</small>
UTILITY (Non-living area)	308	$-((346.2 + 346.2) * (409.5 - 644.9) + (346.2 + 156.5) * (644.9 - 644.9) + (156.5 + 156.5) * (644.9 - 411.5) + (156.5 + 296.4) * (411.5 - 411.5) + (296.4 + 296.4) * (411.5 - 409.5) + (296.4 + 346.2) * (409.5 - 409.5)) * 0.5 * 0.00694$
BASEMENT (Non-living area)	147	$-((302.4 + 302.4) * (266.8 - 415.5) + (302.4 + 296.4) * (415.5 - 411.5) + (296.4 + 156.5) * (411.5 - 411.5) + (156.5 + 156.5) * (411.5 - 266.8) + (156.5 + 302.4) * (266.8 - 266.8)) * 0.5 * 0.00694$

# 307 Victoria Street, Fisher Park, Greensboro, Guilford County, North Carolina, United States, 27401

Gross Living Area: 2035 sq. ft

## Level 2



Space	Area (sq. ft)	Calculation
1st floor (Living area)	1086	Coordinate Polygon Area Algorithm using inches $-((346.2 + 346.2) * (168.8 - 266.8) + (346.2 + 522) * (266.8 - 266.8) + (522 + 522) * (266.8 - 292.7) + (522 + 537) * (292.7 - 292.7) + (537 + 537) * (292.7 - 432.6) + (537 + 522) * (432.6 - 432.6) + (522 + 522) * (432.6 - 516.8) + (522 + 537) * (516.8 - 516.8) + (537 + 537) * (516.8 - 585.4) + (537 + 522) * (585.4 - 585.4) + (522 + 522) * (585.4 - 644.9) + (522 + 171.1) * (644.9 - 644.9) + (171.1 + 171.1) * (644.9 - 505.2) + (171.1 + 156.5) * (505.2 - 505.2) + (156.5 + 156.5) * (505.2 - 266.8) + (156.5 + 171.1) * (266.8 - 266.8) + (171.1 + 171.1) * (266.8 - 168.8) + (171.1 + 346.2) * (168.8 - 168.8)) * 0.5 * 0.00694$

# 307 Victoria Street, Fisher Park, Greensboro, Guilford County, North Carolina, United States, 27401

Gross Living Area: 2035 sq. ft

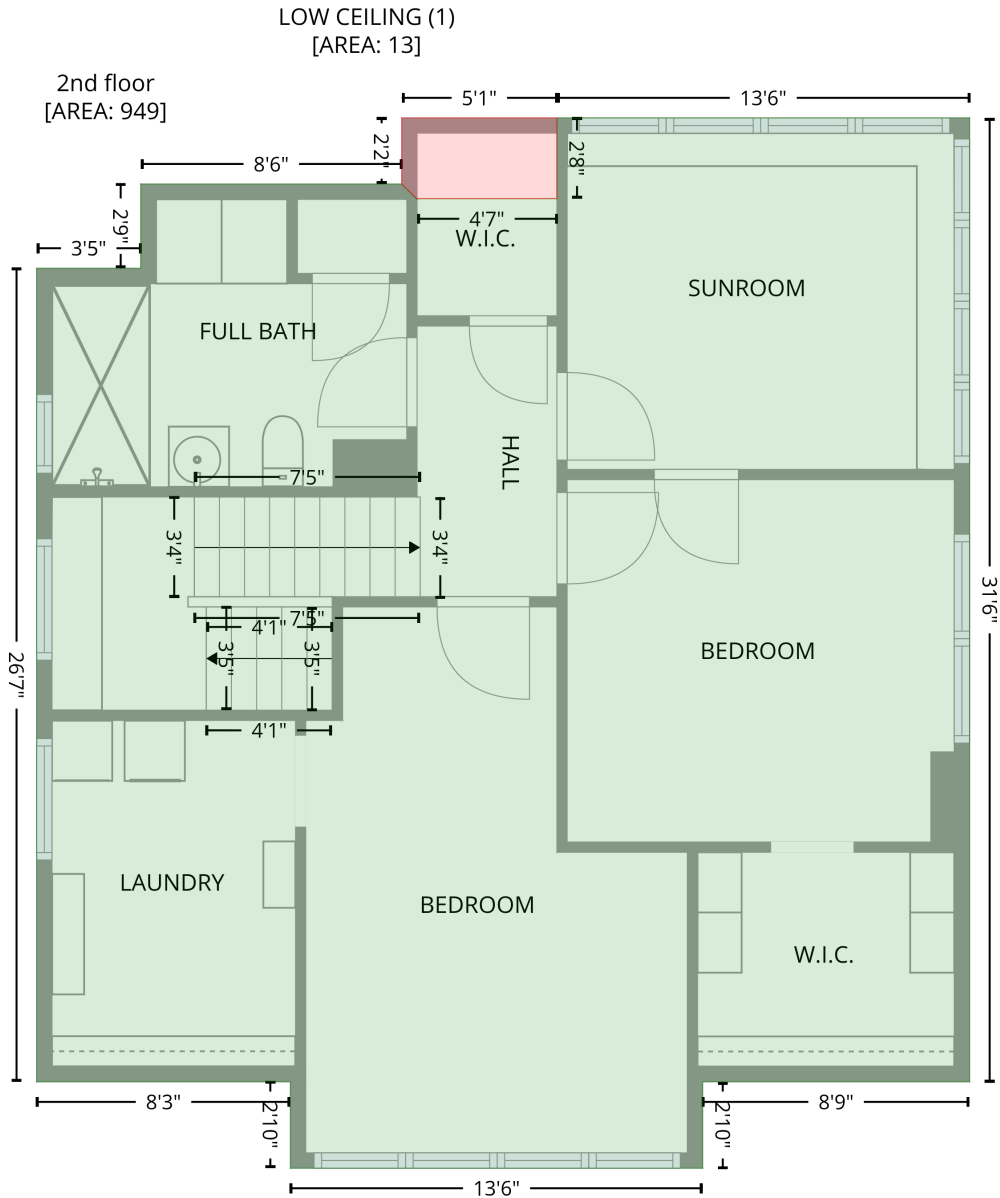
## Level 2

Space	Area (sq. ft)	Calculation <small>Coordinate Polygon Area Algorithm using inches</small>
DECK (Non-living area)	265	$\begin{aligned} & -((403 + 451.5) * (75.8 - 75.8) + (451.5 + 451.5) * (75.8 - 124.8) + (451.5 + 485) * (124.8 - 124.8) \\ & + (485 + 485) * (124.8 - 266.8) + (485 + 346.2) * (266.8 - 266.8) + (346.2 + 346.2) * (266.8 - \\ & 168.8) + (346.2 + 171.1) * (168.8 - 168.8) + (171.1 + 171.1) * (168.8 - 266.8) + (171.1 + 93.7) * \\ & (266.8 - 266.8) + (93.7 + 93.3) * (266.8 - 209.6) + (93.3 + 134.3) * (209.6 - 209.6) + (134.3 + \\ & 155.8) * (209.6 - 188.1) + (155.8 + 155.8) * (188.1 - 124.8) + (155.8 + 210) * (124.8 - 124.8) + \\ & (210 + 234.2) * (124.8 - 95.7) + (234.2 + 291.7) * (95.7 - 95.7) + (291.7 + 315.9) * (95.7 - 124.8) + \\ & (315.9 + 403) * (124.8 - 124.8) + (403 + 403) * (124.8 - 75.8)) * 0.5 * 0.00694 \end{aligned}$

# 307 Victoria Street, Fisher Park, Greensboro, Guilford County, North Carolina, United States, 27401

Gross Living Area: 2035 sq. ft

## Level 3



Space	Area (sq. ft)	Calculation <small>Coordinate Polygon Area Algorithm using inches</small>
2nd floor (Living area)	949	$  \begin{aligned}  & -((522 + 522) * (266.8 - 644.9) + (522 + 417.5) * (644.9 - 644.9) + (417.5 + 417.5) * (644.9 - 678.8) \\  & + (417.5 + 255.9) * (678.8 - 678.8) + (255.9 + 255.9) * (678.8 - 644.9) + (255.9 + 156.5) * \\  & (644.9 - 644.9) + (156.5 + 156.5) * (644.9 - 325.8) + (156.5 + 197.3) * (325.8 - 325.8) + (197.3 + \\  & 197.3) * (325.8 - 292.8) + (197.3 + 299.5) * (292.8 - 292.8) + (299.5 + 305.5) * (292.8 - 298.8) + \\  & (305.5 + 305.5) * (298.8 - 298.5) + (305.5 + 360.3) * (298.5 - 298.5) + (360.3 + 360.3) * (298.5 - \\  & 266.8) + (360.3 + 522) * (266.8 - 266.8)) * 0.5 * 0.00694  \end{aligned}  $

# 307 Victoria Street, Fisher Park, Greensboro, Guilford County, North Carolina, United States, 27401

Gross Living Area: 2035 sq. ft

## Level 3

Space	Area (sq. ft)	Calculation <small>Coordinate Polygon Area Algorithm using inches</small>
LOW CEILING (Non-living area)	13	$-\left((360.3 + 360.3) * (266.8 - 298.5) + (360.3 + 305.5) * (298.5 - 298.5) + (305.5 + 299.5) * (298.5 - 292.8) + (299.5 + 299.5) * (292.8 - 266.8) + (299.5 + 360.3) * (266.8 - 266.8)\right) * 0.5 * 0.00694$