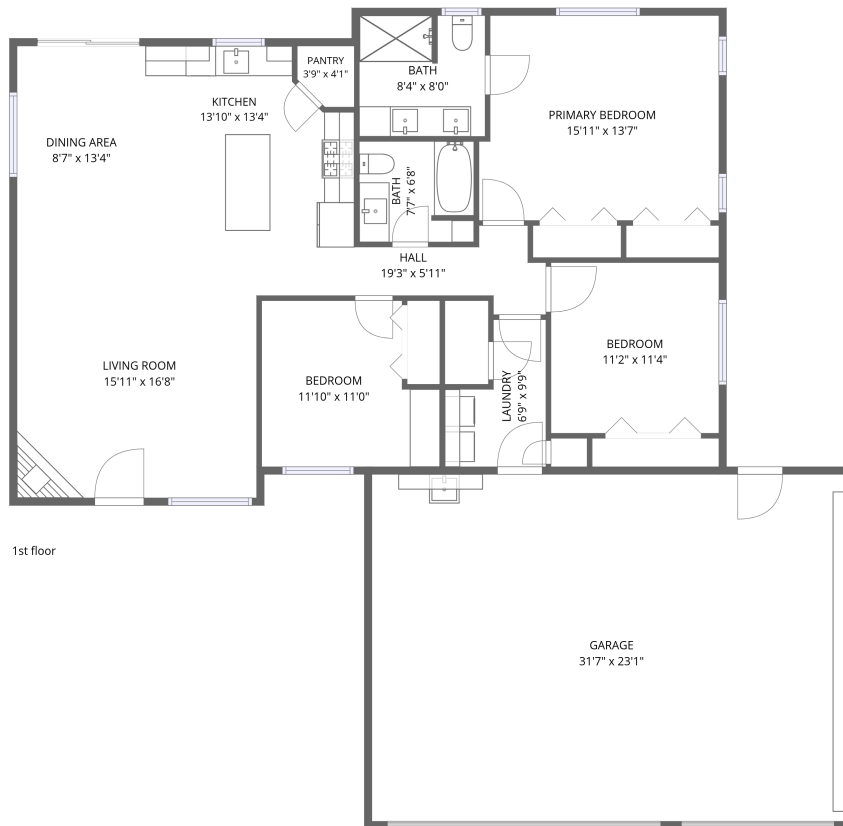


Home data report

1724 Russell St, Spearfish, SD, US



Total Area: 1384 sq. ft

1st Floor: 1384 sq. ft

Excluded: Garage 729 sq. ft, Walls: 122 sq. ft

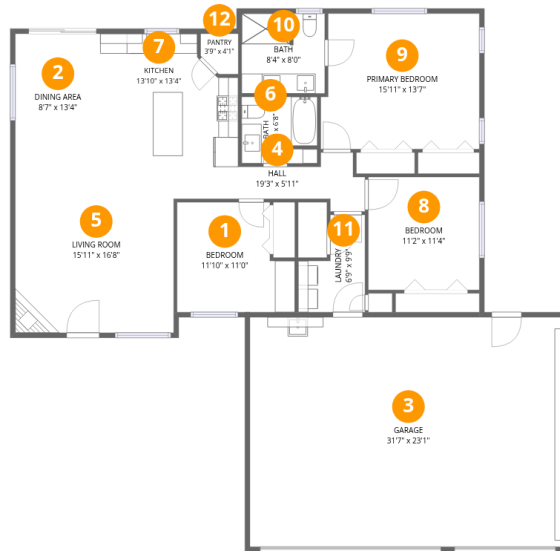
Property summary

 **1** Floors

 **3** Bedrooms

 **2** Bathrooms

 **1** Garages



Room dimensions

Floor 1

Total: 1384sqft

Excluded: 729sqft

#		Dimensions	sqft	Counted as living area
1	Bedroom	11'10" x 11'0"	116 sq. ft	Yes
2	Dining Area	8'7" x 13'4"	114 sq. ft	Yes
3	Garage	31'7" x 23'1"	729 sq. ft	No
4	Hall	19'3" x 5'11"	70 sq. ft	Yes
5	Living Room	15'11" x 16'8"	265 sq. ft	Yes
6	Bath	7'7" x 6'8"	50 sq. ft	Yes
7	Kitchen	13'10" x 13'4"	169 sq. ft	Yes
8	Bedroom	11'2" x 11'4"	126 sq. ft	Yes
9	Primary Bedroom	15'11" x 13'7"	211 sq. ft	Yes
10	Bath	8'4" x 8'0"	66 sq. ft	Yes
11	Laundry	6'9" x 9'9"	51 sq. ft	Yes

Home data report

1724 Russell St,Spearfish,SD,US

#		Dimensions	sqft	Counted as living area
12	Pantry	3'9" x 4'1"	14 sq. ft	Yes

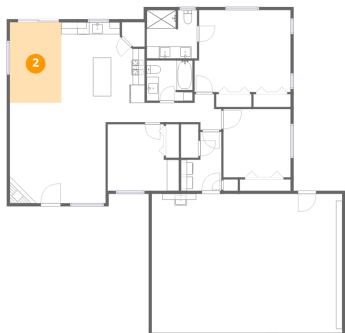
1 Floor 1 - Bedroom



Dimensions: 11'10" x 11'0"
Area: 116 sq. ft
Counted as living area: Yes

Heated: Yes
Finished: Yes
Enclosed: Yes
Contiguous: Yes
Permitted: Yes
Wet space: No
Addition: No
Conversion: No

2 Floor 1 - Dining Area



Dimensions: 8'7" x 13'4"
Area: 114 sq. ft
Counted as living area: Yes

Heated: Yes
Finished: Yes
Enclosed: Yes
Contiguous: Yes
Permitted: Yes
Wet space: No
Addition: No
Conversion: No

3 Floor 1 - Garage



Dimensions: 31'7" x 23'1"
Area: 729 sq. ft
Counted as living area: No

Heated: No
Finished: No
Enclosed: Yes
Contiguous: Yes
Permitted: Yes
Wet space: No
Addition: No
Conversion: No

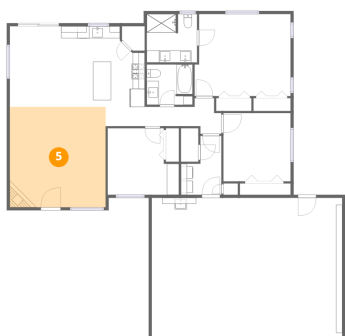
4 Floor 1 - Hall



Dimensions: 19'3" x 5'11"
Area: 70 sq. ft
Counted as living area: Yes

Heated: Yes
Finished: Yes
Enclosed: Yes
Contiguous: Yes
Permitted: Yes
Wet space: No
Addition: No
Conversion: No

5 Floor 1 - Living Room



Dimensions: 15'11" x 16'8"
Area: 265 sq. ft
Counted as living area: Yes

Heated: Yes
Finished: Yes
Enclosed: Yes
Contiguous: Yes
Permitted: Yes
Wet space: No
Addition: No
Conversion: No

6 Floor 1 - Bath



Dimensions: 7'7" x 6'8"
Area: 50 sq. ft
Counted as living area: Yes

Heated: Yes
Finished: Yes
Enclosed: Yes
Contiguous: Yes
Permitted: Yes
Wet space: Yes
Addition: No
Conversion: No

7 Floor 1 - Kitchen



Dimensions: 13'10" x 13'4"
Area: 169 sq. ft
Counted as living area: Yes

Heated: Yes
Finished: Yes
Enclosed: Yes
Contiguous: Yes
Permitted: Yes
Wet space: No
Addition: No
Conversion: No

8 Floor 1 - Bedroom



Dimensions: 11'2" x 11'4"
Area: 126 sq. ft
Counted as living area: Yes

Heated: Yes
Finished: Yes
Enclosed: Yes
Contiguous: Yes
Permitted: Yes
Wet space: No
Addition: No
Conversion: No

9 Floor 1 - Primary Bedroom



Dimensions: 15'11" x 13'7"
Area: 211 sq. ft
Counted as living area: Yes

Heated: Yes
Finished: Yes
Enclosed: Yes
Contiguous: Yes
Permitted: Yes
Wet space: No
Addition: No
Conversion: No

10 Floor 1 - Bath



Dimensions: 8'4" x 8'0"
Area: 66 sq. ft
Counted as living area: Yes

Heated: Yes
Finished: Yes
Enclosed: Yes
Contiguous: Yes
Permitted: Yes
Wet space: Yes
Addition: No
Conversion: No

11 Floor 1 - Laundry



Dimensions: 6'9" x 9'9"
Area: 51 sq. ft
Counted as living area: Yes

Heated: Yes
Finished: Yes
Enclosed: Yes
Contiguous: Yes
Permitted: Yes
Wet space: No
Addition: No
Conversion: No

12 Floor 1 - Pantry



Dimensions: 3'9" x 4'1"
Area: 14 sq. ft
Counted as living area: Yes

Heated: Yes
Finished: Yes
Enclosed: Yes
Contiguous: Yes
Permitted: Yes
Wet space: No
Addition: No
Conversion: No