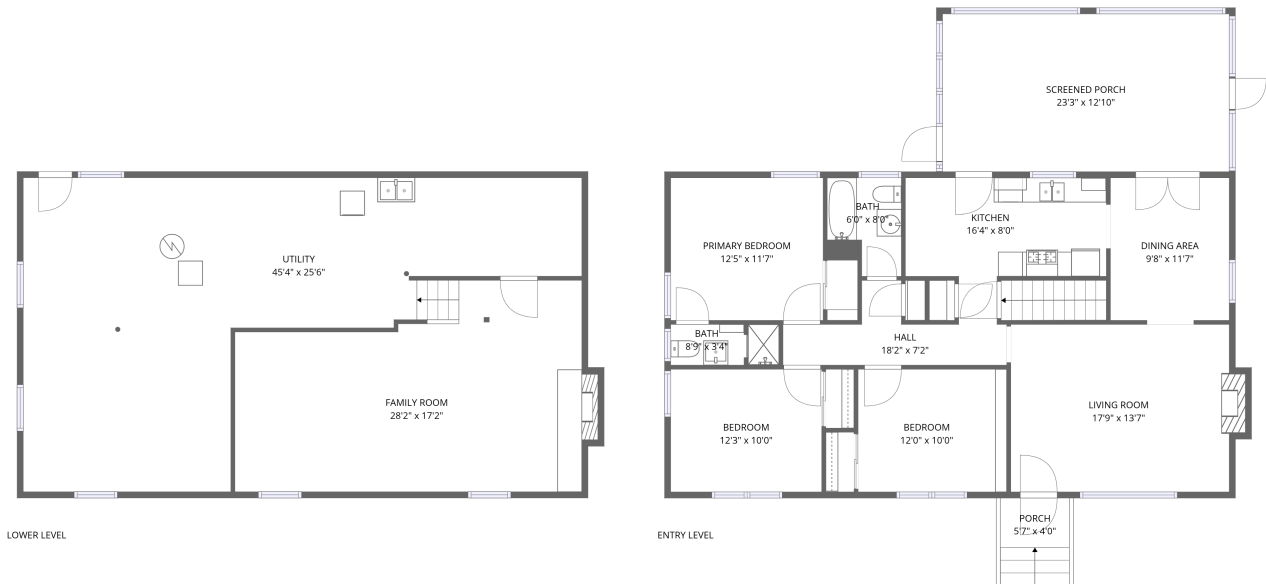


Home data report

3320 Melody Avenue, Cave Spring, Roanoke, Roanoke County, Virginia, United States, 24018



Total Area: 1587 sq. ft

1st Floor: 427 sq. ft, 2nd Floor: 1160 sq. ft

Excluded: Utility 733 sq. ft, Fireplace 16 sq. ft, Screened porch 299 sq. ft, Porch 40 sq. ft,

Walls: 162 sq. ft

Property summary

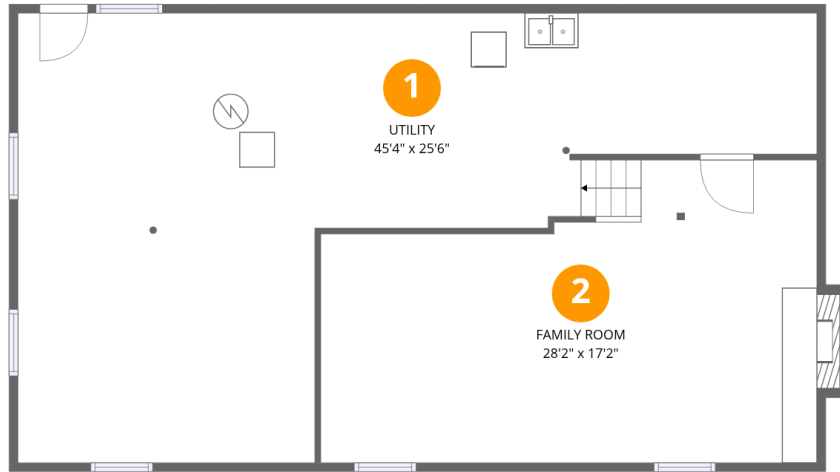
 **2** Floors

 **3** Bedrooms

 **2** Bathrooms

Home data report

3320 Melody Avenue, Cave Spring, Roanoke, Roanoke County, Virginia, United States, 24018



Room dimensions

Floor 1

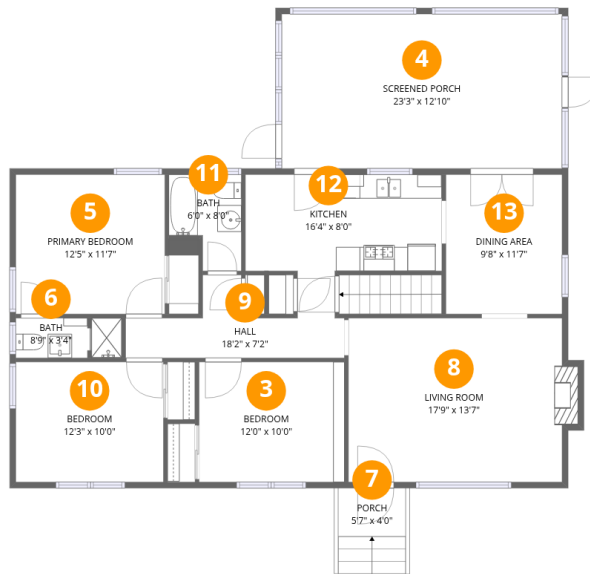
Total:427sqft

Excluded: 741sqft

#		Dimensions	sqft	Counted as living area
1	Utility	45'4" x 25'6"	1158 sq. ft	No
2	Family Room	28'2" x 17'2"	484 sq. ft	Yes

Home data report

3320 Melody Avenue, Cave Spring, Roanoke, Roanoke County, Virginia, United States, 24018



Room dimensions

Floor 2

Total: 1160sqft

Excluded: 347sqft

#		Dimensions	sqft	Counted as living area
3	Bedroom	12'0" x 10'0"	120 sq. ft	Yes
4	Screened Porch	23'3" x 12'10"	299 sq. ft	No
5	Primary Bedroom	12'5" x 11'7"	143 sq. ft	Yes
6	Bath	8'9" x 3'4"	29 sq. ft	Yes
7	Porch	5'7" x 4'0"	22 sq. ft	No
8	Living Room	17'9" x 13'7"	241 sq. ft	Yes
9	Hall	18'2" x 7'2"	131 sq. ft	Yes
10	Bedroom	12'3" x 10'0"	122 sq. ft	Yes
11	Bath	6'0" x 8'0"	48 sq. ft	Yes
12	Kitchen	16'4" x 8'0"	131 sq. ft	Yes
13	Dining Area	9'8" x 11'7"	112 sq. ft	Yes

3320 Melody Avenue, Cave Spring, Roanoke, Roanoke County, Virginia, United States, 24018

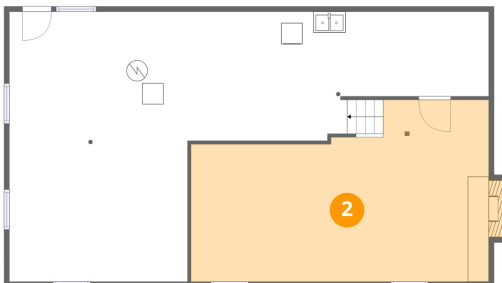
1 Floor 1 - Utility



Dimensions: 45'4" x 25'6"
Area: 1158 sq. ft
Counted as living area: No

Heated: Yes
Finished: No
Enclosed: Yes
Contiguous: Yes
Permitted: Yes
Wet space: No
Addition: No
Conversion: No

2 Floor 1 - Family Room

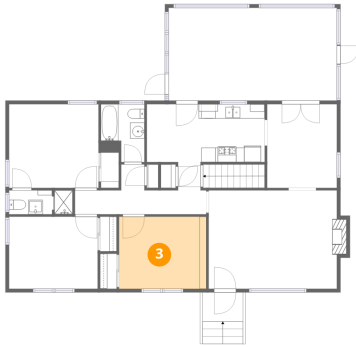


Dimensions: 28'2" x 17'2"
Area: 484 sq. ft
Counted as living area: No

Heated: Yes
Finished: Yes
Enclosed: Yes
Contiguous: No
Permitted: Yes
Wet space: No
Addition: No
Conversion: No

3320 Melody Avenue, Cave Spring, Roanoke, Roanoke County, Virginia, United States, 24018

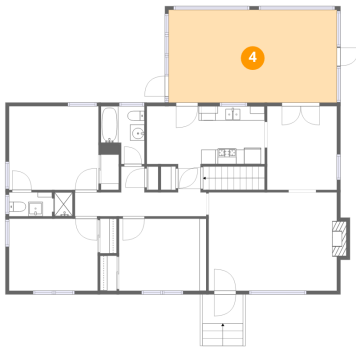
3 Floor 2 - Bedroom



Dimensions: 12'0" x 10'0"
Area: 120 sq. ft
Counted as living area: Yes

Heated: Yes
Finished: Yes
Enclosed: Yes
Contiguous: Yes
Permitted: Yes
Wet space: No
Addition: No
Conversion: No

4 Floor 2 - Screened Porch



Dimensions: 23'3" x 12'10"
Area: 299 sq. ft
Counted as living area: No

Heated: No
Finished: No
Enclosed: No
Contiguous: Yes
Permitted: Yes
Wet space: No
Addition: No
Conversion: No

5 Floor 2 - Primary Bedroom



Dimensions: 12'5" x 11'7"
Area: 143 sq. ft
Counted as living area: Yes

Heated: Yes
Finished: Yes
Enclosed: Yes
Contiguous: Yes
Permitted: Yes
Wet space: No
Addition: No
Conversion: No

6 Floor 2 - Bath



Dimensions: 8'9" x 3'4"
Area: 29 sq. ft
Counted as living area: Yes

Heated: Yes
Finished: Yes
Enclosed: Yes
Contiguous: Yes
Permitted: Yes
Wet space: Yes
Addition: No
Conversion: No

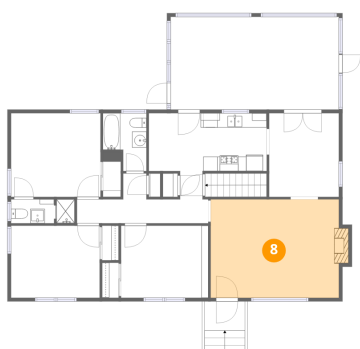
7 Floor 2 - Porch



Dimensions: 5'7" x 4'0"
Area: 22 sq. ft
Counted as living area: No

Heated: No
Finished: No
Enclosed: No
Contiguous: Yes
Permitted: Yes
Wet space: No
Addition: No
Conversion: No

8 Floor 2 - Living Room



Dimensions: 17'9" x 13'7"
Area: 241 sq. ft
Counted as living area: Yes

Heated: Yes
Finished: Yes
Enclosed: Yes
Contiguous: Yes
Permitted: Yes
Wet space: No
Addition: No
Conversion: No

3320 Melody Avenue, Cave Spring, Roanoke, Roanoke County, Virginia, United States, 24018

9 Floor 2 - Hall



Dimensions: 18'2" x 7'2"
Area: 131 sq. ft
Counted as living area: Yes

Heated: Yes
Finished: Yes
Enclosed: Yes
Contiguous: Yes
Permitted: Yes
Wet space: No
Addition: No
Conversion: No

10 Floor 2 - Bedroom



Dimensions: 12'3" x 10'0"
Area: 122 sq. ft
Counted as living area: Yes

Heated: Yes
Finished: Yes
Enclosed: Yes
Contiguous: Yes
Permitted: Yes
Wet space: No
Addition: No
Conversion: No

11 Floor 2 - Bath

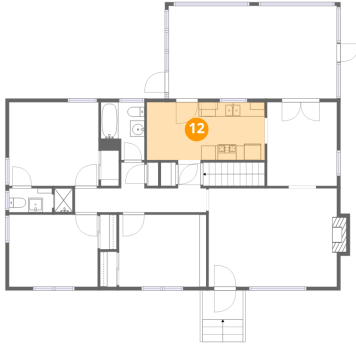


Dimensions: 6'0" x 8'0"
Area: 48 sq. ft
Counted as living area: Yes

Heated: Yes
Finished: Yes
Enclosed: Yes
Contiguous: Yes
Permitted: Yes
Wet space: Yes
Addition: No
Conversion: No

3320 Melody Avenue, Cave Spring, Roanoke, Roanoke County, Virginia, United States, 24018

12 Floor 2 - Kitchen



Dimensions: 16'4" x 8'0"
Area: 131 sq. ft
Counted as living area: Yes

Heated: Yes
Finished: Yes
Enclosed: Yes
Contiguous: Yes
Permitted: Yes
Wet space: No
Addition: No
Conversion: No

13 Floor 2 - Dining Area



Dimensions: 9'8" x 11'7"
Area: 112 sq. ft
Counted as living area: Yes

Heated: Yes
Finished: Yes
Enclosed: Yes
Contiguous: Yes
Permitted: Yes
Wet space: No
Addition: No
Conversion: No