

25507 Bonsonworth Ave

Maple Ridge BC V4R 1L4

Lower Level Area: 1,120 SQ.FT.

Main Level Area: 2,160 SQ.FT.

Upper Level Area: 3,145 SQ.FT.

Total Area 6,425 SQ.FT.

Combined Garage Area: 2,338 SQ.FT.

6



BEDROOMS

6

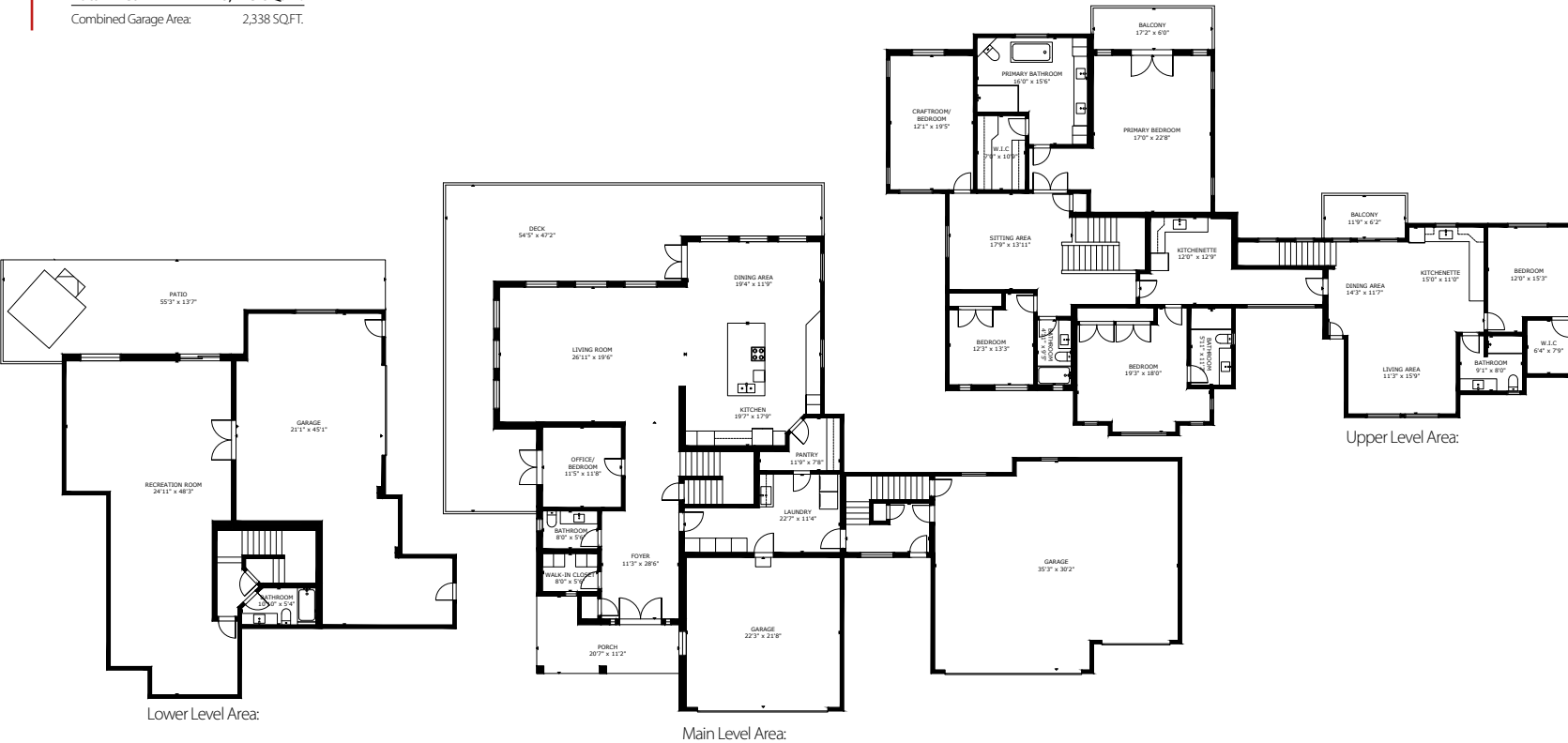


BATHROOMS

6,425



TOTAL SQ.FT.



25507 BOSONWORTH AVE MAPLE RIDGE BC V4R 1L4

Measurements are approximate and may not be to scale. Gross measurements provided by agent. The floor plan illustration is not suitable for construction/architectural purposes. This communication is not intended to cause or induce breach of an existing agency agreement



Professionally measured by 3D Immersive Marketing Ltd.

Lead Floor Planner: *Simon Alexander*
Quality Assurance: *Dianne Graham*