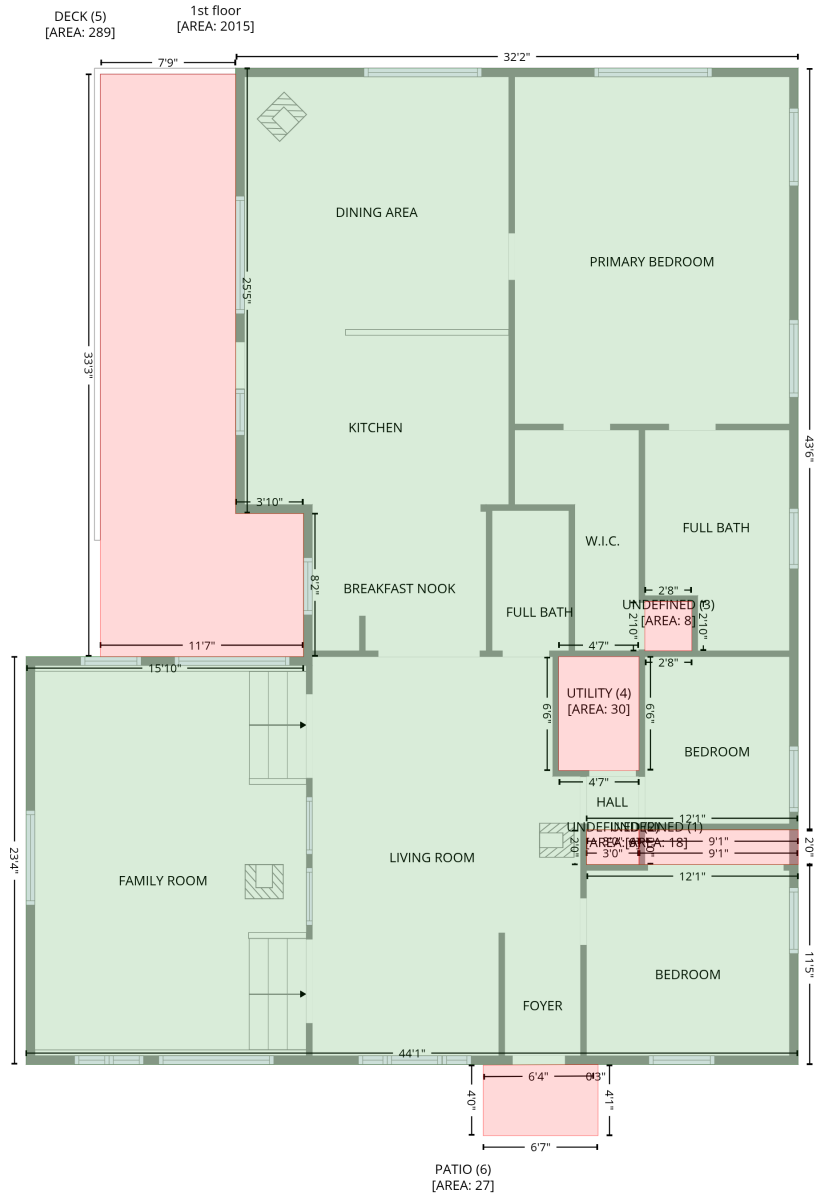


13623 S Wamblee Valley Rd, Conifer, CO, US

Gross Living Area: 2015 sq. ft

Level 1



Space

Area (sq. ft)

Calculation

Coordinate Polygon Area Algorithm using inches

1st floor
(Living area)

2015

$-\left((594.1 + 594.1) * (-4.4 - 517.8) + (594.1 + 448.9) * (517.8 - 517.8) + (448.9 + 448.9) * (517.8 - 541.7) + (448.9 + 594.1) * (541.7 - 541.7) + (594.1 + 594.1) * (541.7 - 678.7) + (594.1 + 64.9) * (678.7 - 678.7) + (64.9 + 64.9) * (678.7 - 399.1) + (64.9 + 255) * (399.1 - 399.1) + (255 + 255) * (399.1 - 300.9) + (255 + 208.6) * (300.9 - 300.9) + (208.6 + 208.6) * (300.9 - -4.4) + (208.6 + 594.1) * (-4.4 - -4.4) * 0.5 * 0.00694 + -\left((485 + 429.9) * (399.1 - 399.1) + (429.9 + 429.9) * (399.1 - 477.1) + (429.9 + 485) * (477.1 - 477.1) + (485 + 485) * (477.1 - 399.1)\right) * 0.5 * 0.00694 + -\left((521.2 + 489) * (361.3 - 361.3) + (489 + 489) * (361.3 - 395.1) + (489 + 521.2) * (395.1 - 395.1) + (521.2 + 521.2) * (395.1 - 361.3)\right) * 0.5 * 0.00694$

13623 S Wamblee Valley Rd, Conifer, CO, US

Gross Living Area: 2015 sq. ft

Level 1

Space	Area (sq. ft)	Calculation <small>Coordinate Polygon Area Algorithm using inches</small>
UNDEFINED (Non-living area)	18	$-\left((594.1 + 594.1) * (517.8 - 541.7) + (594.1 + 485) * (541.7 - 541.7) + (485 + 485) * (541.7 - 517.8) + (485 + 594.1) * (517.8 - 517.8)\right) * 0.5 * 0.00694$
UNDEFINED (Non-living area)	6	$-\left((485 + 485) * (517.8 - 541.7) + (485 + 448.9) * (541.7 - 541.7) + (448.9 + 448.9) * (541.7 - 517.8) + (448.9 + 485) * (517.8 - 517.8)\right) * 0.5 * 0.00694$
UNDEFINED (Non-living area)	8	$-\left((521.2 + 521.2) * (361.3 - 395.1) + (521.2 + 489) * (395.1 - 395.1) + (489 + 489) * (395.1 - 361.3) + (489 + 521.2) * (361.3 - 361.3)\right) * 0.5 * 0.00694$
UTILITY (Non-living area)	30	$-\left((485 + 485) * (399.1 - 477.1) + (485 + 429.9) * (477.1 - 477.1) + (429.9 + 429.9) * (477.1 - 399.1) + (429.9 + 485) * (399.1 - 399.1)\right) * 0.5 * 0.00694$
DECK (Non-living area)	289	$-\left((208.5 + 208.6) * (-0.3 - 300.9) + (208.6 + 255) * (300.9 - 300.9) + (255 + 255) * (300.9 - 399.1) + (255 + 115.7) * (399.1 - 399.1) + (115.7 + 115.7) * (399.1 - -0.3) + (115.7 + 208.5) * (-0.3 - -0.3)\right) * 0.5 * 0.00694$
PATIO (Non-living area)	27	$-\left((456.9 + 456.9) * (678.7 - 727.5) + (456.9 + 378.2) * (727.5 - 727.5) + (378.2 + 378.2) * (727.5 - 679.1) + (378.2 + 453.8) * (679.1 - 678.7) + (453.8 + 456.9) * (678.7 - 678.7)\right) * 0.5 * 0.00694$