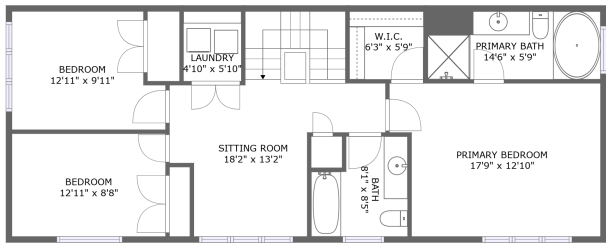
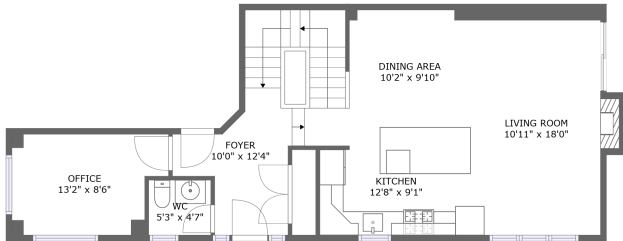


Home report

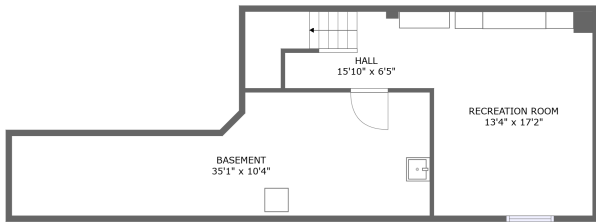
501 Strasbourg Street, Orléans Avalon - Notting Gate -
Fallingbrook - Gardenway South, Orléans, Ontario, Canada, K4A



FLOOR 3



FLOOR 2



FLOOR 1


Total Area: 2010 sq. ft

Below Ground: 340 sq. ft, Floor 2: 735 sq. ft, Floor 3: 935 sq. ft

Excluded: Basement 294 sq. ft, Fireplace 8 sq. ft, Walls: 175 sq. ft

Property summary

 **3** Floors

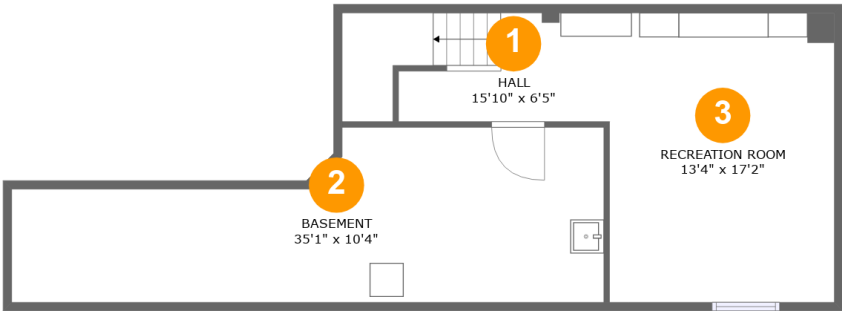
 **3** Bedrooms

 **2** Bathrooms

 **1** Half baths

Home report

501 Strasbourg Street, Orléans Avalon - Notting Gate -
Fallingbrook - Gardenway South, Orléans, Ontario, Canada, K4A



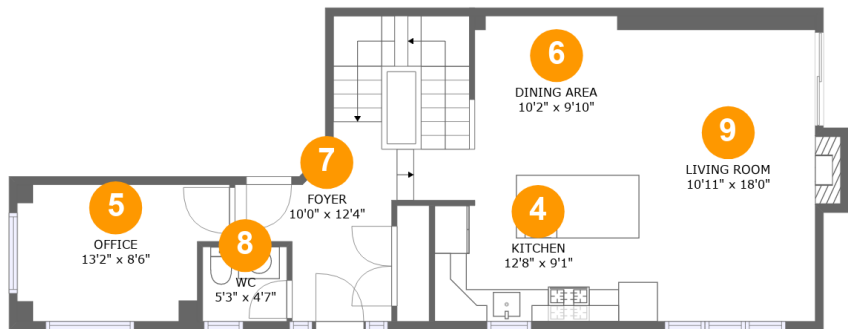
Room dimensions

Floor 1 Below ground Total:340sqft Excluded: 294sqft

#		Max Dimensions	sqft	Included
1	Hall	15'10" x 6'5"	100 sq. ft	Yes
2	Basement	35'1" x 10'4"	294 sq. ft	No
3	Recreation Room	13'4" x 17'2"	229 sq. ft	Yes

Home report

501 Strasbourg Street, Orléans Avalon - Notting Gate -
Fallingbrook - Gardenway South, Orléans, Ontario, Canada, K4A



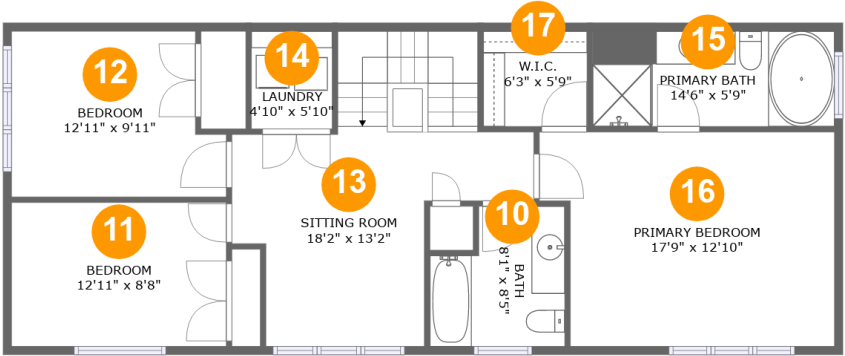
Room dimensions

Floor 2 Total:735sqft Excluded: 8sqft

#		Max Dimensions	sqft	Included
4	Kitchen	12'8" x 9'1"	110 sq. ft	Yes
5	Office	13'2" x 8'6"	101 sq. ft	Yes
6	Dining Area	10'2" x 9'10"	100 sq. ft	Yes
7	Foyer	10'0" x 12'4"	161 sq. ft	Yes
8	WC	5'3" x 4'7"	24 sq. ft	Yes
9	Living Room	10'11" x 18'0"	213 sq. ft	Yes

Home report

501 Strasbourg Street, Orléans Avalon - Notting Gate -
Fallingbrook - Gardenway South, Orléans, Ontario, Canada, K4A



Room dimensions

Floor 3

Total:935sqft

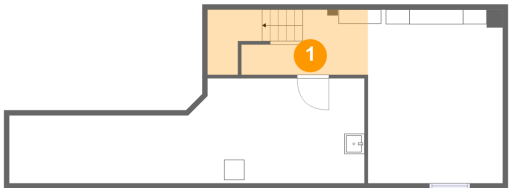
Excluded: 0sqft

#		Max Dimensions	sqft	Included
10	Bath	8'1" x 8'5"	59 sq. ft	Yes
11	Bedroom	12'11" x 8'8"	111 sq. ft	Yes
12	Bedroom	12'11" x 9'11"	117 sq. ft	Yes
13	Sitting Room	18'2" x 13'2"	213 sq. ft	Yes
14	Laundry	4'10" x 5'10"	28 sq. ft	Yes
15	Primary Bath	14'6" x 5'9"	83 sq. ft	Yes
16	Primary Bedroom	17'9" x 12'10"	212 sq. ft	Yes
17	W.I.C.	6'3" x 5'9"	36 sq. ft	Yes

Home report

501 Strasbourg Street, Orléans Avalon - Notting Gate -
Fallingbrook - Gardenway South, Orléans, Ontario, Canada, K4A

1 Floor 1 - Hall



Max Dimensions: 15'10" x 6'5"
Calculated Area: 100 sq. ft
Included: No

Heated: Yes
Finished: Yes
Enclosed: Yes
Contiguous: No
Permitted: Yes
Wet space: No
Addition: No
Conversion: No

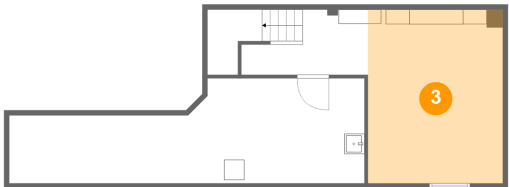
2 Floor 1 - Basement



Max Dimensions: 35'1" x 10'4"
Calculated Area: 294 sq. ft
Included: No

Heated: Yes
Finished: No
Enclosed: Yes
Contiguous: Yes
Permitted: Yes
Wet space: No
Addition: No
Conversion: No

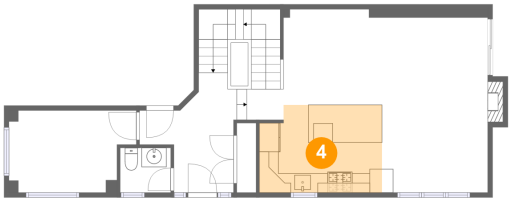
3 Floor 1 - Recreation Room



Max Dimensions: 13'4" x 17'2"
Calculated Area: 229 sq. ft
Included: No

Heated: Yes
Finished: Yes
Enclosed: Yes
Contiguous: No
Permitted: Yes
Wet space: No
Addition: No
Conversion: No

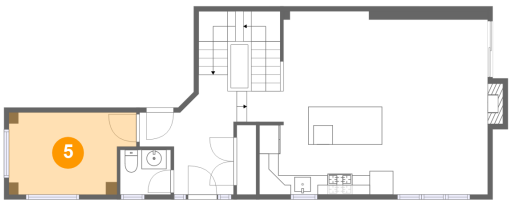
4 Floor 2 - Kitchen



Max Dimensions: 12'8" x 9'1"
Calculated Area: 110 sq. ft
Included: Yes

Heated: Yes
Finished: Yes
Enclosed: Yes
Contiguous: Yes
Permitted: Yes
Wet space: No
Addition: No
Conversion: No

5 Floor 2 - Office



Max Dimensions: 13'2" x 8'6"
Calculated Area: 101 sq. ft
Included: Yes

Heated: Yes
Finished: Yes
Enclosed: Yes
Contiguous: Yes
Permitted: Yes
Wet space: No
Addition: No
Conversion: No

501 Strasbourg Street, Orléans Avalon - Notting Gate -
Fallingbrook - Gardenway South, Orléans, Ontario, Canada, K4A

6 Floor 2 - Dining Area



Max Dimensions: 10'2" x 9'10"
Calculated Area: 100 sq. ft
Included: Yes

Heated: Yes
Finished: Yes
Enclosed: Yes
Contiguous: Yes
Permitted: Yes
Wet space: No
Addition: No
Conversion: No

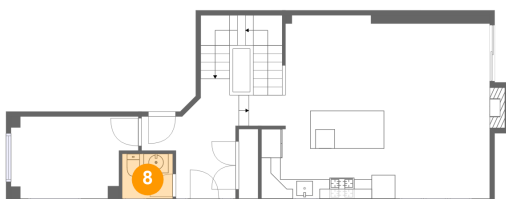
7 Floor 2 - Foyer



Max Dimensions: 10'0" x 12'4"
Calculated Area: 161 sq. ft
Included: Yes

Heated: Yes
Finished: Yes
Enclosed: Yes
Contiguous: Yes
Permitted: Yes
Wet space: No
Addition: No
Conversion: No

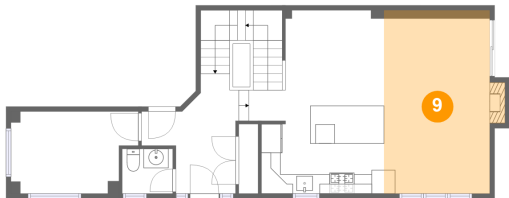
8 Floor 2 - WC



Max Dimensions: 5'3" x 4'7"
Calculated Area: 24 sq. ft
Included: Yes

Heated: Yes
Finished: Yes
Enclosed: Yes
Contiguous: Yes
Permitted: Yes
Wet space: Yes
Addition: No
Conversion: No

9 Floor 2 - Living Room



Max Dimensions: 10'11" x 18'0"
Calculated Area: 213 sq. ft
Included: Yes

Heated: Yes
Finished: Yes
Enclosed: Yes
Contiguous: Yes
Permitted: Yes
Wet space: No
Addition: No
Conversion: No

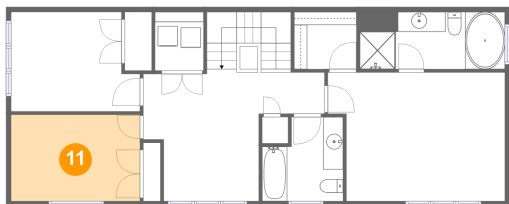
10 Floor 3 - Bath



Max Dimensions: 8'1" x 8'5"
Calculated Area: 59 sq. ft
Included: Yes

Heated: Yes
Finished: Yes
Enclosed: Yes
Contiguous: Yes
Permitted: Yes
Wet space: Yes
Addition: No
Conversion: No

11 Floor 3 - Bedroom

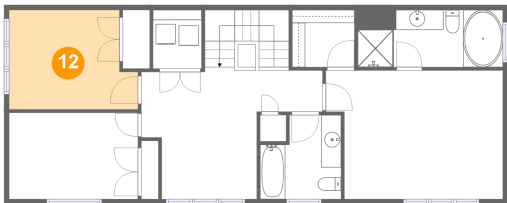


Max Dimensions: 12'11" x 8'8"
Calculated Area: 111 sq. ft
Included: Yes

Heated: Yes
Finished: Yes
Enclosed: Yes
Contiguous: Yes
Permitted: Yes
Wet space: No
Addition: No
Conversion: No

501 Strasbourg Street, Orléans Avalon - Notting Gate -
Fallingbrook - Gardenway South, Orléans, Ontario, Canada, K4A

12 Floor 3 - Bedroom



Max Dimensions: 12'11" x 9'11"
Calculated Area: 117 sq. ft
Included: Yes

Heated: Yes
Finished: Yes
Enclosed: Yes
Contiguous: Yes
Permitted: Yes
Wet space: No
Addition: No
Conversion: No

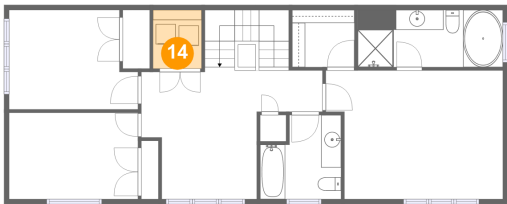
13 Floor 3 - Sitting Room



Max Dimensions: 18'2" x 13'2"
Calculated Area: 213 sq. ft
Included: Yes

Heated: Yes
Finished: Yes
Enclosed: Yes
Contiguous: Yes
Permitted: Yes
Wet space: No
Addition: No
Conversion: No

14 Floor 3 - Laundry

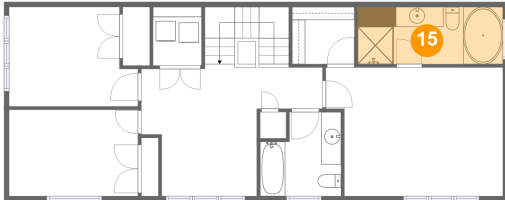


Max Dimensions: 4'10" x 5'10"
Calculated Area: 28 sq. ft
Included: Yes

Heated: Yes
Finished: Yes
Enclosed: Yes
Contiguous: Yes
Permitted: Yes
Wet space: No
Addition: No
Conversion: No

**501 Strasbourg Street, Orléans Avalon - Notting Gate -
Fallingbrook - Gardenway South, Orléans, Ontario, Canada, K4A**

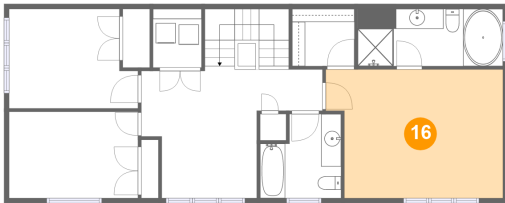
15 Floor 3 - Primary Bath



Max Dimensions: 14'6" x 5'9"
Calculated Area: 83 sq. ft
Included: Yes

Heated: Yes
Finished: Yes
Enclosed: Yes
Contiguous: Yes
Permitted: Yes
Wet space: Yes
Addition: No
Conversion: No

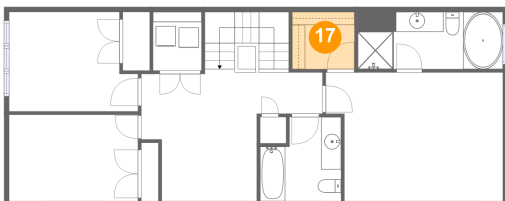
16 Floor 3 - Primary Bedroom



Max Dimensions: 17'9" x 12'10"
Calculated Area: 212 sq. ft
Included: Yes

Heated: Yes
Finished: Yes
Enclosed: Yes
Contiguous: Yes
Permitted: Yes
Wet space: No
Addition: No
Conversion: No

17 Floor 3 - W.I.C.



Max Dimensions: 6'3" x 5'9"
Calculated Area: 36 sq. ft
Included: Yes

Heated: Yes
Finished: Yes
Enclosed: Yes
Contiguous: Yes
Permitted: Yes
Wet space: No
Addition: No
Conversion: No