

Home data report

**2225 Yellow Mountain Road Southeast, South Roanoke,
Roanoke, Roanoke city, Virginia, United States, 24014**



Total Area: 2621 sq. ft

1st Floor: 426 sq. ft, 2nd Floor: 1621 sq. ft, 3rd Floor: 574 sq. ft

Excluded: Garage 651 sq. ft, Deck 564 sq. ft, Utility 440 sq. ft, Balcony 68 sq. ft, Porch 47 sq. ft, Open to below 11 sq. ft, Attic 289 sq. ft, Walls: 276 sq. ft

Property summary

 **3** Floors

 **3** Bedrooms

 **1** Bathrooms

Home data report

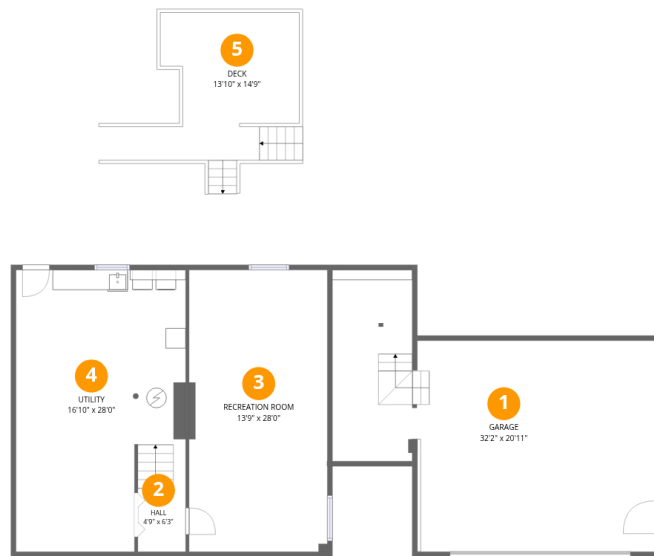
**2225 Yellow Mountain Road Southeast, South Roanoke,
Roanoke, Roanoke city, Virginia, United States, 24014**

 **1**
Half baths

 **1**
Garages

Home data report

2225 Yellow Mountain Road Southeast, South Roanoke,
Roanoke, Roanoke city, Virginia, United States, 24014



Room dimensions

Floor 1

Total:426sqft

Excluded: 1309sqft

#		Dimensions	sqft	Counted as living area
1	Garage	32'2" x 20'11"	651 sq. ft	No
2	Hall	4'9" x 6'3"	30 sq. ft	Yes
3	Recreation Room	13'9" x 28'0"	384 sq. ft	Yes
4	Utility	16'10" x 28'0"	438 sq. ft	No
5	Deck	13'10" x 14'9"	218 sq. ft	No

Home data report

2225 Yellow Mountain Road Southeast, South Roanoke,
Roanoke, Roanoke city, Virginia, United States, 24014



Room dimensions

Floor 2

Total:1621sqft Excluded: 472sqft

#		Dimensions	sqft	Counted as living area
6	Family Room	10'5" x 19'7"	204 sq. ft	Yes
7	Hall	5'6" x 3'4"	18 sq. ft	Yes
8	Hall	8'1" x 19'0"	143 sq. ft	Yes
9	Deck	10'2" x 10'1"	103 sq. ft	No
10	Foyer	5'6" x 6'5"	79 sq. ft	Yes
11	Kitchen	9'6" x 19'7"	186 sq. ft	Yes
12	Living Room	12'11" x 28'0"	373 sq. ft	Yes
13	Sun Room	11'9" x 12'11"	152 sq. ft	Yes
14	Deck	22'9" x 10'10"	243 sq. ft	No
15	Balcony	7'11" x 8'6"	68 sq. ft	No
16	Bedroom	11'9" x 14'8"	163 sq. ft	Yes

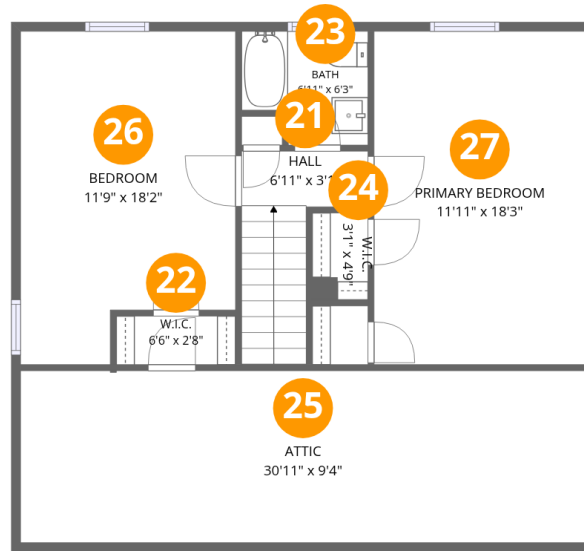
Home data report

**2225 Yellow Mountain Road Southeast, South Roanoke,
Roanoke, Roanoke city, Virginia, United States, 24014**

#		Dimensions	sqft	Counted as living area
17	Open To Below	3'4" x 3'1"	11 sq. ft	No
18	Dining Area	19'3" x 11'2"	203 sq. ft	Yes
19	Bath	4'3" x 7'3"	31 sq. ft	Yes
20	Porch	5'11" x 4'6"	47 sq. ft	No

Home data report

2225 Yellow Mountain Road Southeast, South Roanoke,
Roanoke, Roanoke city, Virginia, United States, 24014



Room dimensions

Floor 3

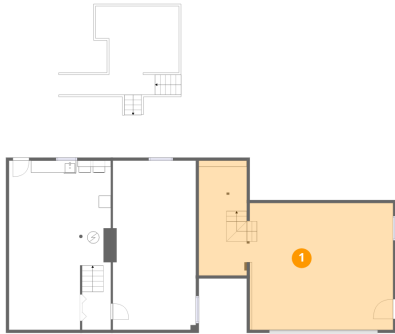
Total:574sqft

Excluded: 289sqft

#		Dimensions	sqft	Counted as living area
21	Hall	6'11" x 3'1"	52 sq. ft	Yes
22	W.I.C.	6'6" x 2'8"	17 sq. ft	Yes
23	Bath	6'11" x 6'3"	38 sq. ft	Yes
24	W.I.C.	3'1" x 4'9"	14 sq. ft	Yes
25	Attic	30'11" x 9'4"	291 sq. ft	No
26	Bedroom	11'9" x 18'2"	194 sq. ft	Yes
27	Primary Bedroom	11'11" x 18'3"	212 sq. ft	Yes

**2225 Yellow Mountain Road Southeast, South Roanoke,
Roanoke, Roanoke city, Virginia, United States, 24014**

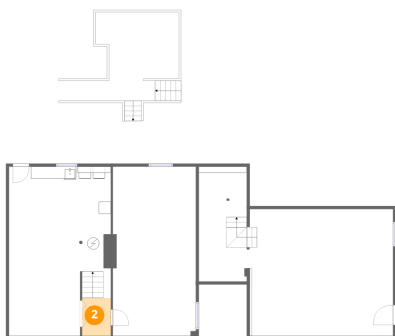
1 Floor 1 - Garage



Dimensions: 32'2" x 20'11"
Area: 651 sq. ft
Counted as living area: No

Heated: No
Finished: No
Enclosed: Yes
Contiguous: Yes
Permitted: Yes
Wet space: No
Addition: No
Conversion: No

2 Floor 1 - Hall

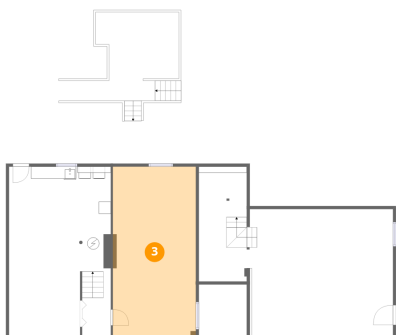


Dimensions: 4'9" x 6'3"
Area: 30 sq. ft
Counted as living area: No

Heated: Yes
Finished: Yes
Enclosed: Yes
Contiguous: No
Permitted: Yes
Wet space: No
Addition: No
Conversion: No

2225 Yellow Mountain Road Southeast, South Roanoke,
Roanoke, Roanoke city, Virginia, United States, 24014

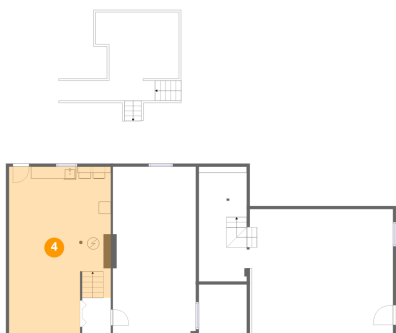
3 Floor 1 - Recreation Room



Dimensions: 13'9" x 28'0"
Area: 384 sq. ft
Counted as living area: No

Heated: Yes
Finished: Yes
Enclosed: Yes
Contiguous: No
Permitted: Yes
Wet space: No
Addition: No
Conversion: No

4 Floor 1 - Utility



Dimensions: 16'10" x 28'0"
Area: 438 sq. ft
Counted as living area: No

Heated: Yes
Finished: No
Enclosed: Yes
Contiguous: Yes
Permitted: Yes
Wet space: No
Addition: No
Conversion: No

5 Floor 1 - Deck



Dimensions: 13'10" x 14'9"
Area: 218 sq. ft
Counted as living area: No

Heated: No
Finished: No
Enclosed: No
Contiguous: Yes
Permitted: Yes
Wet space: No
Addition: No
Conversion: No

2225 Yellow Mountain Road Southeast, South Roanoke,
Roanoke, Roanoke city, Virginia, United States, 24014

6 Floor 2 - Family Room



Dimensions: 10'5" x 19'7"
Area: 204 sq. ft
Counted as living area: Yes

Heated: Yes
Finished: Yes
Enclosed: Yes
Contiguous: Yes
Permitted: Yes
Wet space: No
Addition: No
Conversion: No

7 Floor 2 - Hall



Dimensions: 5'6" x 3'4"
Area: 18 sq. ft
Counted as living area: Yes

Heated: Yes
Finished: Yes
Enclosed: Yes
Contiguous: Yes
Permitted: Yes
Wet space: No
Addition: No
Conversion: No

8 Floor 2 - Hall



Dimensions: 8'1" x 19'0"
Area: 143 sq. ft
Counted as living area: Yes

Heated: Yes
Finished: Yes
Enclosed: Yes
Contiguous: Yes
Permitted: Yes
Wet space: No
Addition: No
Conversion: No

2225 Yellow Mountain Road Southeast, South Roanoke,
Roanoke, Roanoke city, Virginia, United States, 24014

9 Floor 2 - Deck



Dimensions: 10'2" x 10'1"
Area: 103 sq. ft
Counted as living area: No

Heated: No
Finished: No
Enclosed: No
Contiguous: Yes
Permitted: Yes
Wet space: No
Addition: No
Conversion: No

10 Floor 2 - Foyer



Dimensions: 5'6" x 6'5"
Area: 79 sq. ft
Counted as living area: Yes

Heated: Yes
Finished: Yes
Enclosed: Yes
Contiguous: Yes
Permitted: Yes
Wet space: No
Addition: No
Conversion: No

11 Floor 2 - Kitchen

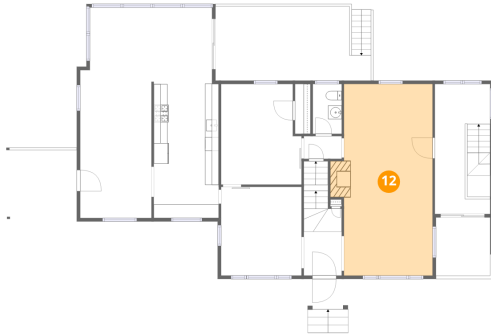


Dimensions: 9'6" x 19'7"
Area: 186 sq. ft
Counted as living area: Yes

Heated: Yes
Finished: Yes
Enclosed: Yes
Contiguous: Yes
Permitted: Yes
Wet space: No
Addition: No
Conversion: No

2225 Yellow Mountain Road Southeast, South Roanoke,
Roanoke, Roanoke city, Virginia, United States, 24014

12 Floor 2 - Living Room



Dimensions: 12'11" x 28'0"
Area: 373 sq. ft
Counted as living area: Yes

Heated: Yes
Finished: Yes
Enclosed: Yes
Contiguous: Yes
Permitted: Yes
Wet space: No
Addition: No
Conversion: No

13 Floor 2 - Sun Room



Dimensions: 11'9" x 12'11"
Area: 152 sq. ft
Counted as living area: Yes

Heated: Yes
Finished: Yes
Enclosed: Yes
Contiguous: Yes
Permitted: Yes
Wet space: No
Addition: No
Conversion: No

14 Floor 2 - Deck



Dimensions: 22'9" x 10'10"
Area: 243 sq. ft
Counted as living area: No

Heated: No
Finished: No
Enclosed: No
Contiguous: Yes
Permitted: Yes
Wet space: No
Addition: No
Conversion: No

2225 Yellow Mountain Road Southeast, South Roanoke,
Roanoke, Roanoke city, Virginia, United States, 24014

15 Floor 2 - Balcony



Dimensions: 7'11" x 8'6"
Area: 68 sq. ft
Counted as living area: No

Heated: No
Finished: No
Enclosed: No
Contiguous: Yes
Permitted: Yes
Wet space: No
Addition: No
Conversion: No

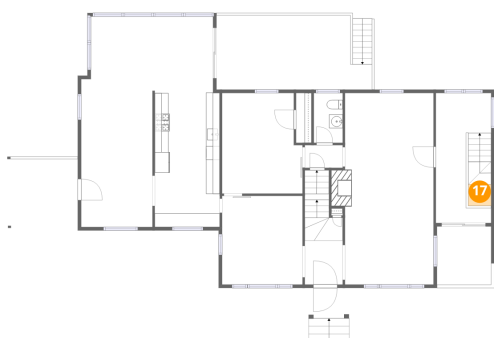
16 Floor 2 - Bedroom



Dimensions: 11'9" x 14'8"
Area: 163 sq. ft
Counted as living area: Yes

Heated: Yes
Finished: Yes
Enclosed: Yes
Contiguous: Yes
Permitted: Yes
Wet space: No
Addition: No
Conversion: No

17 Floor 2 - Open To Below



Dimensions: 3'4" x 3'1"
Area: 11 sq. ft
Counted as living area: No

Heated: No
Finished: No
Enclosed: No
Contiguous: Yes
Permitted: No
Wet space: No
Addition: No
Conversion: No

2225 Yellow Mountain Road Southeast, South Roanoke,
Roanoke, Roanoke city, Virginia, United States, 24014

18 Floor 2 - Dining Area



Dimensions: 19'3" x 11'2"
Area: 203 sq. ft
Counted as living area: Yes

Heated: Yes
Finished: Yes
Enclosed: Yes
Contiguous: Yes
Permitted: Yes
Wet space: No
Addition: No
Conversion: No

19 Floor 2 - Bath



Dimensions: 4'3" x 7'3"
Area: 31 sq. ft
Counted as living area: Yes

Heated: Yes
Finished: Yes
Enclosed: Yes
Contiguous: Yes
Permitted: Yes
Wet space: Yes
Addition: No
Conversion: No

20 Floor 2 - Porch

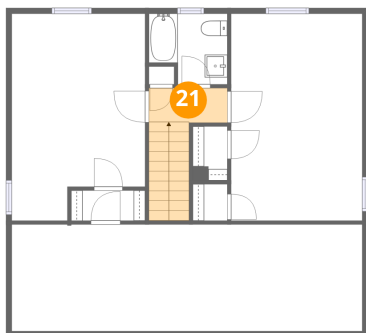


Dimensions: 5'11" x 4'6"
Area: 47 sq. ft
Counted as living area: No

Heated: No
Finished: No
Enclosed: No
Contiguous: Yes
Permitted: Yes
Wet space: No
Addition: No
Conversion: No

2225 Yellow Mountain Road Southeast, South Roanoke,
Roanoke, Roanoke city, Virginia, United States, 24014

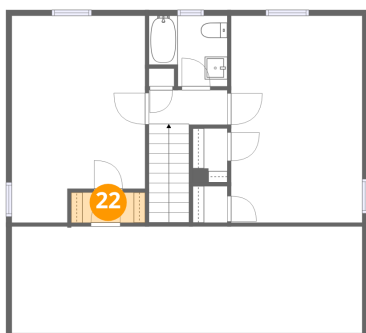
21 Floor 3 - Hall



Dimensions: 6'11" x 3'1"
Area: 52 sq. ft
Counted as living area: Yes

Heated: Yes
Finished: Yes
Enclosed: Yes
Contiguous: Yes
Permitted: Yes
Wet space: No
Addition: No
Conversion: No

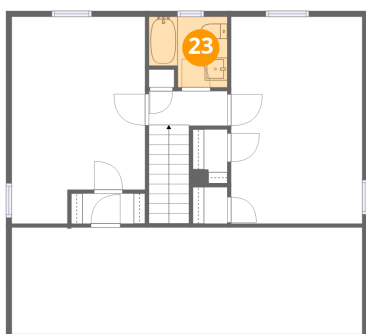
22 Floor 3 - W.I.C.



Dimensions: 6'6" x 2'8"
Area: 17 sq. ft
Counted as living area: Yes

Heated: Yes
Finished: Yes
Enclosed: Yes
Contiguous: Yes
Permitted: Yes
Wet space: No
Addition: No
Conversion: No

23 Floor 3 - Bath

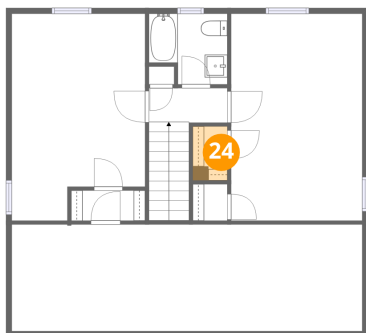


Dimensions: 6'11" x 6'3"
Area: 38 sq. ft
Counted as living area: Yes

Heated: Yes
Finished: Yes
Enclosed: Yes
Contiguous: Yes
Permitted: Yes
Wet space: Yes
Addition: No
Conversion: No

2225 Yellow Mountain Road Southeast, South Roanoke,
Roanoke, Roanoke city, Virginia, United States, 24014

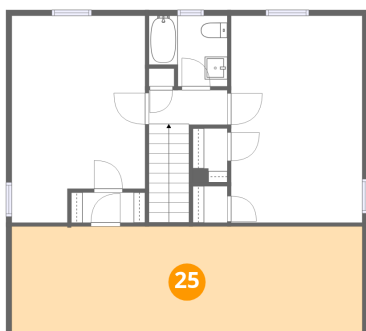
24 Floor 3 - W.I.C.



Dimensions: 3'1" x 4'9"
Area: 14 sq. ft
Counted as living area: Yes

Heated: Yes
Finished: Yes
Enclosed: Yes
Contiguous: Yes
Permitted: Yes
Wet space: No
Addition: No
Conversion: No

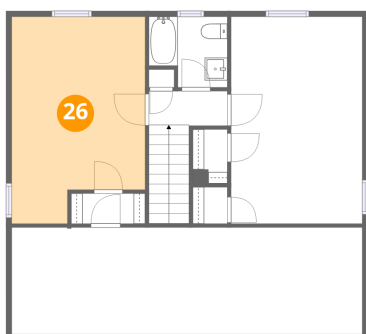
25 Floor 3 - Attic



Dimensions: 30'11" x 9'4"
Area: 291 sq. ft
Counted as living area: No

Heated: No
Finished: No
Enclosed: Yes
Contiguous: Yes
Permitted: Yes
Wet space: No
Addition: No
Conversion: No

26 Floor 3 - Bedroom



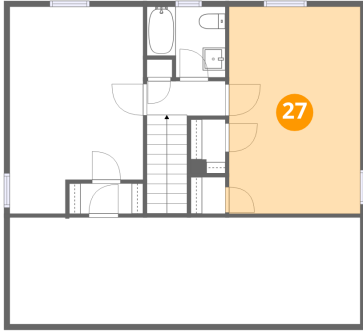
Dimensions: 11'9" x 18'2"
Area: 194 sq. ft
Counted as living area: Yes

Heated: Yes
Finished: Yes
Enclosed: Yes
Contiguous: Yes
Permitted: Yes
Wet space: No
Addition: No
Conversion: No

Home data report

**2225 Yellow Mountain Road Southeast, South Roanoke,
Roanoke, Roanoke city, Virginia, United States, 24014**

27 Floor 3 - Primary Bedroom



Dimensions: 11'11" x 18'3"
Area: 212 sq. ft
Counted as living area: Yes

Heated: Yes
Finished: Yes
Enclosed: Yes
Contiguous: Yes
Permitted: Yes
Wet space: No
Addition: No
Conversion: No