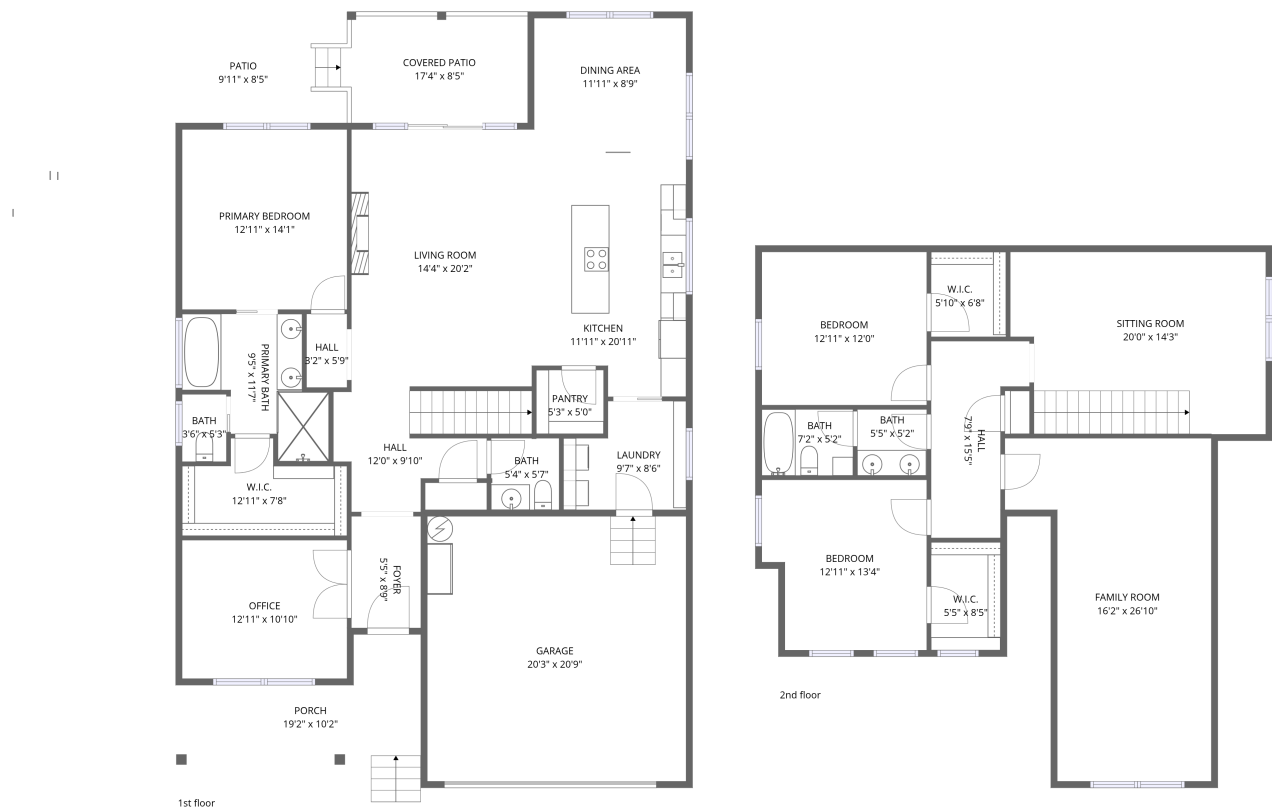


Home data report

4509 Jack Dr, Bussell, Cookeville, Putnam County, Tennessee,
United States, 38506



Total Area: 2724 sq. ft
1st Floor: 1503 sq. ft, 2nd Floor: 1221 sq. ft
Excluded: Garage 421 sq. ft, Covered patio 134 sq. ft, Patio 83 sq. ft, Porch 153 sq. ft,
Walls: 212 sq. ft

Property summary

 **2** Floors

 **3** Bedrooms

 **2** Bathrooms

Home data report

**4509 Jack Dr, Bussell, Cookeville, Putnam County, Tennessee,
United States, 38506**



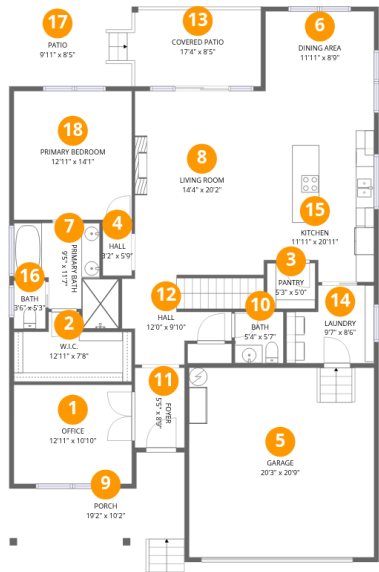
1
Half baths



1
Garages

Home data report

4509 Jack Dr, Bussell, Cookeville, Putnam County, Tennessee,
United States, 38506



Room dimensions

Floor 1

Total:1503sqft Excluded: 791sqft

#		Dimensions	sqft	Counted as living area
1	Office	12'11" x 10'10"	140 sq. ft	Yes
2	W.I.C.	12'11" x 7'8"	78 sq. ft	Yes
3	Pantry	5'3" x 5'0"	26 sq. ft	Yes
4	Hall	3'2" x 5'9"	18 sq. ft	Yes
5	Garage	20'3" x 20'9"	421 sq. ft	No
6	Dining Area	11'11" x 8'9"	104 sq. ft	Yes
7	Primary Bath	9'5" x 11'7"	91 sq. ft	Yes
8	Living Room	14'4" x 20'2"	288 sq. ft	Yes
9	Porch	19'2" x 10'2"	153 sq. ft	No
10	Bath	5'4" x 5'7"	30 sq. ft	Yes
11	Foyer	5'5" x 8'9"	48 sq. ft	Yes

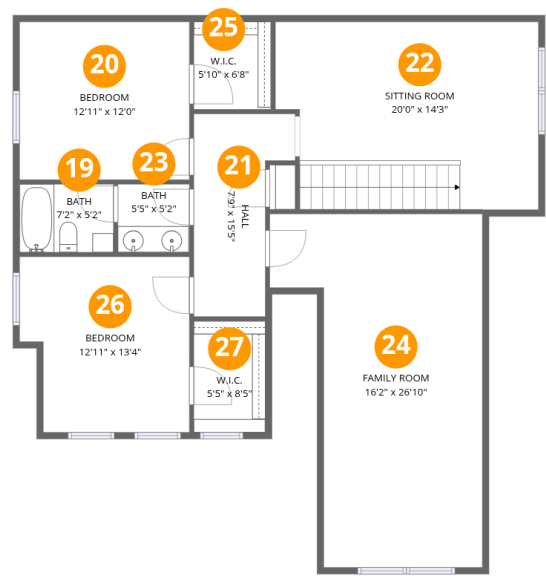
Home data report

**4509 Jack Dr, Bussell, Cookeville, Putnam County, Tennessee,
United States, 38506**

#		Dimensions	sqft	Counted as living area
12	Hall	12'0" x 9'10"	106 sq. ft	Yes
13	Covered Patio	17'4" x 8'5"	135 sq. ft	No
14	Laundry	9'7" x 8'6"	72 sq. ft	Yes
15	Kitchen	11'11" x 20'11"	235 sq. ft	Yes
16	Bath	3'6" x 5'3"	18 sq. ft	Yes
17	Patio	9'11" x 8'5"	83 sq. ft	No
18	Primary Bedroom	12'11" x 14'1"	182 sq. ft	Yes

Home data report

4509 Jack Dr, Bussell, Cookeville, Putnam County, Tennessee,
United States, 38506



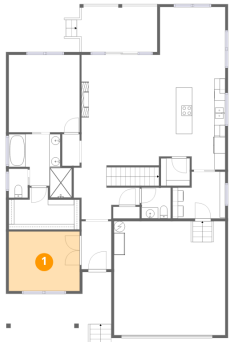
Room dimensions

Floor 2

Total:1221sqft Excluded: 0sqft

#		Dimensions	sqft	Counted as living area
19	Bath	7'2" x 5'2"	37 sq. ft	Yes
20	Bedroom	12'11" x 12'0"	155 sq. ft	Yes
21	Hall	7'9" x 15'5"	92 sq. ft	Yes
22	Sitting Room	20'0" x 14'3"	271 sq. ft	Yes
23	Bath	5'5" x 5'2"	28 sq. ft	Yes
24	Family Room	16'2" x 26'10"	347 sq. ft	Yes
25	W.I.C.	5'10" x 6'8"	39 sq. ft	Yes
26	Bedroom	12'11" x 13'4"	160 sq. ft	Yes
27	W.I.C.	5'5" x 8'5"	46 sq. ft	Yes

1 Floor 1 - Office



Dimensions: 12'11" x 10'10"
Area: 140 sq. ft
Counted as living area: Yes

Heated: Yes
Finished: Yes
Enclosed: Yes
Contiguous: Yes
Permitted: Yes
Wet space: No
Addition: No
Conversion: No

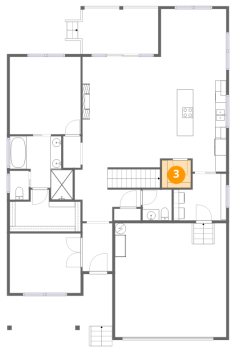
2 Floor 1 - W.I.C.



Dimensions: 12'11" x 7'8"
Area: 78 sq. ft
Counted as living area: Yes

Heated: Yes
Finished: Yes
Enclosed: Yes
Contiguous: Yes
Permitted: Yes
Wet space: No
Addition: No
Conversion: No

3 Floor 1 - Pantry



Dimensions: 5'3" x 5'0"
Area: 26 sq. ft
Counted as living area: Yes

Heated: Yes
Finished: Yes
Enclosed: Yes
Contiguous: Yes
Permitted: Yes
Wet space: No
Addition: No
Conversion: No

4 Floor 1 - Hall



Dimensions: 3'2" x 5'9"
Area: 18 sq. ft
Counted as living area: Yes

Heated: Yes
Finished: Yes
Enclosed: Yes
Contiguous: Yes
Permitted: Yes
Wet space: No
Addition: No
Conversion: No

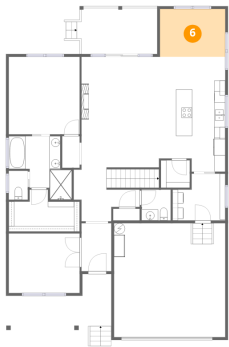
5 Floor 1 - Garage



Dimensions: 20'3" x 20'9"
Area: 421 sq. ft
Counted as living area: No

Heated: No
Finished: No
Enclosed: Yes
Contiguous: Yes
Permitted: Yes
Wet space: No
Addition: No
Conversion: No

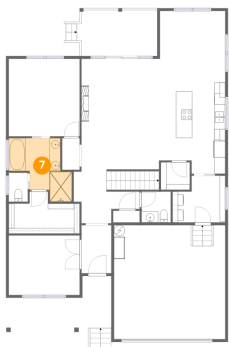
6 Floor 1 - Dining Area



Dimensions: 11'11" x 8'9"
Area: 104 sq. ft
Counted as living area: Yes

Heated: Yes
Finished: Yes
Enclosed: Yes
Contiguous: Yes
Permitted: Yes
Wet space: No
Addition: No
Conversion: No

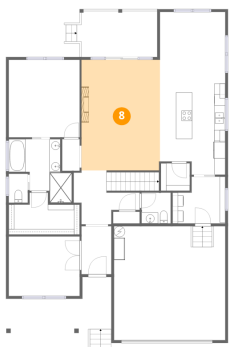
7 Floor 1 - Primary Bath



Dimensions: 9'5" x 11'7"
Area: 91 sq. ft
Counted as living area: Yes

Heated: Yes
Finished: Yes
Enclosed: Yes
Contiguous: Yes
Permitted: Yes
Wet space: Yes
Addition: No
Conversion: No

8 Floor 1 - Living Room

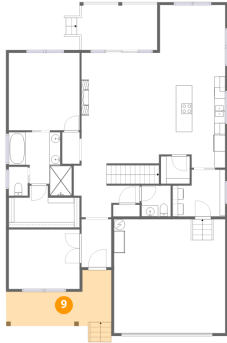


Dimensions: 14'4" x 20'2"
Area: 288 sq. ft
Counted as living area: Yes

Heated: Yes
Finished: Yes
Enclosed: Yes
Contiguous: Yes
Permitted: Yes
Wet space: No
Addition: No
Conversion: No

4509 Jack Dr, Bussell, Cookeville, Putnam County, Tennessee,
United States, 38506

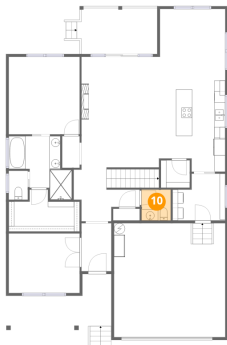
9 Floor 1 - Porch



Dimensions: 19'2" x 10'2"
Area: 153 sq. ft
Counted as living area: No

Heated: No
Finished: No
Enclosed: No
Contiguous: Yes
Permitted: Yes
Wet space: No
Addition: No
Conversion: No

10 Floor 1 - Bath



Dimensions: 5'4" x 5'7"
Area: 30 sq. ft
Counted as living area: Yes

Heated: Yes
Finished: Yes
Enclosed: Yes
Contiguous: Yes
Permitted: Yes
Wet space: Yes
Addition: No
Conversion: No

11 Floor 1 - Foyer



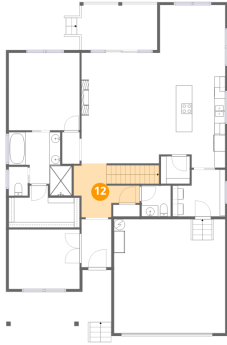
Dimensions: 5'5" x 8'9"
Area: 48 sq. ft
Counted as living area: Yes

Heated: Yes
Finished: Yes
Enclosed: Yes
Contiguous: Yes
Permitted: Yes
Wet space: No
Addition: No
Conversion: No

Home data report

4509 Jack Dr, Bussell, Cookeville, Putnam County, Tennessee,
United States, 38506

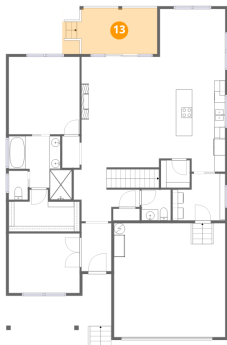
12 Floor 1 - Hall



Dimensions: 12'0" x 9'10"
Area: 106 sq. ft
Counted as living area: Yes

Heated: Yes
Finished: Yes
Enclosed: Yes
Contiguous: Yes
Permitted: Yes
Wet space: No
Addition: No
Conversion: No

13 Floor 1 - Covered Patio



Dimensions: 17'4" x 8'5"
Area: 135 sq. ft
Counted as living area: No

Heated: No
Finished: No
Enclosed: No
Contiguous: Yes
Permitted: Yes
Wet space: No
Addition: No
Conversion: No

14 Floor 1 - Laundry



Dimensions: 9'7" x 8'6"
Area: 72 sq. ft
Counted as living area: Yes

Heated: Yes
Finished: Yes
Enclosed: Yes
Contiguous: Yes
Permitted: Yes
Wet space: No
Addition: No
Conversion: No

4509 Jack Dr, Bussell, Cookeville, Putnam County, Tennessee,
United States, 38506

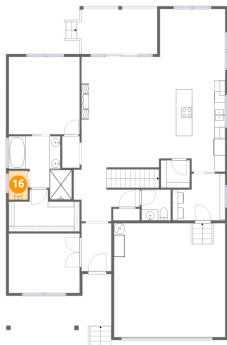
15 Floor 1 - Kitchen



Dimensions: 11'11" x 20'11"
Area: 235 sq. ft
Counted as living area: Yes

Heated: Yes
Finished: Yes
Enclosed: Yes
Contiguous: Yes
Permitted: Yes
Wet space: No
Addition: No
Conversion: No

16 Floor 1 - Bath



Dimensions: 3'6" x 5'3"
Area: 18 sq. ft
Counted as living area: Yes

Heated: Yes
Finished: Yes
Enclosed: Yes
Contiguous: Yes
Permitted: Yes
Wet space: Yes
Addition: No
Conversion: No

17 Floor 1 - Patio

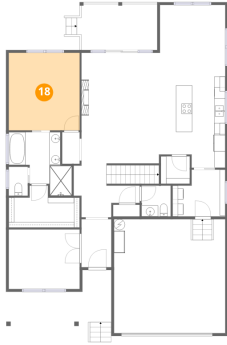


Dimensions: 9'11" x 8'5"
Area: 83 sq. ft
Counted as living area: No

Heated: No
Finished: No
Enclosed: No
Contiguous: Yes
Permitted: Yes
Wet space: No
Addition: No
Conversion: No

4509 Jack Dr, Bussell, Cookeville, Putnam County, Tennessee,
United States, 38506

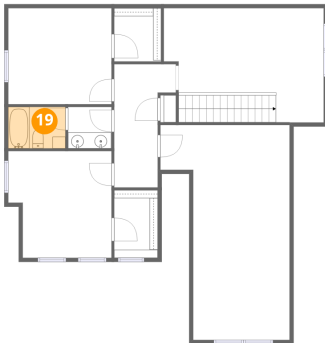
18 Floor 1 - Primary Bedroom



Dimensions: 12'11" x 14'1"
Area: 182 sq. ft
Counted as living area: Yes

Heated: Yes
Finished: Yes
Enclosed: Yes
Contiguous: Yes
Permitted: Yes
Wet space: No
Addition: No
Conversion: No

19 Floor 2 - Bath



Dimensions: 7'2" x 5'2"
Area: 37 sq. ft
Counted as living area: Yes

Heated: Yes
Finished: Yes
Enclosed: Yes
Contiguous: Yes
Permitted: Yes
Wet space: Yes
Addition: No
Conversion: No

20 Floor 2 - Bedroom



Dimensions: 12'11" x 12'0"
Area: 155 sq. ft
Counted as living area: Yes

Heated: Yes
Finished: Yes
Enclosed: Yes
Contiguous: Yes
Permitted: Yes
Wet space: No
Addition: No
Conversion: No

Home data report

4509 Jack Dr, Bussell, Cookeville, Putnam County, Tennessee,
United States, 38506

21 Floor 2 - Hall



Dimensions: 7'9" x 15'5"
Area: 92 sq. ft
Counted as living area: Yes

Heated: Yes
Finished: Yes
Enclosed: Yes
Contiguous: Yes
Permitted: Yes
Wet space: No
Addition: No
Conversion: No

22 Floor 2 - Sitting Room



Dimensions: 20'0" x 14'3"
Area: 271 sq. ft
Counted as living area: Yes

Heated: Yes
Finished: Yes
Enclosed: Yes
Contiguous: Yes
Permitted: Yes
Wet space: No
Addition: No
Conversion: No

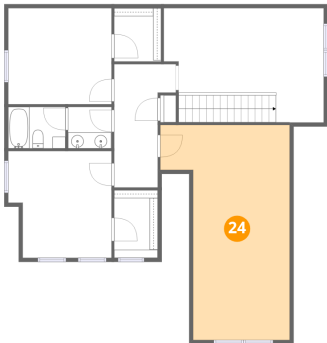
23 Floor 2 - Bath



Dimensions: 5'5" x 5'2"
Area: 28 sq. ft
Counted as living area: Yes

Heated: Yes
Finished: Yes
Enclosed: Yes
Contiguous: Yes
Permitted: Yes
Wet space: Yes
Addition: No
Conversion: No

24 Floor 2 - Family Room



Dimensions: 16'2" x 26'10"
Area: 347 sq. ft
Counted as living area: Yes

Heated: Yes
Finished: Yes
Enclosed: Yes
Contiguous: Yes
Permitted: Yes
Wet space: No
Addition: No
Conversion: No

25 Floor 2 - W.I.C.



Dimensions: 5'10" x 6'8"
Area: 39 sq. ft
Counted as living area: Yes

Heated: Yes
Finished: Yes
Enclosed: Yes
Contiguous: Yes
Permitted: Yes
Wet space: No
Addition: No
Conversion: No

26 Floor 2 - Bedroom



Dimensions: 12'11" x 13'4"
Area: 160 sq. ft
Counted as living area: Yes

Heated: Yes
Finished: Yes
Enclosed: Yes
Contiguous: Yes
Permitted: Yes
Wet space: No
Addition: No
Conversion: No

4509 Jack Dr, Bussell, Cookeville, Putnam County, Tennessee,
United States, 38506

27 Floor 2 - W.I.C.



Dimensions: 5'5" x 8'5"
Area: 46 sq. ft
Counted as living area: Yes

Heated: Yes
Finished: Yes
Enclosed: Yes
Contiguous: Yes
Permitted: Yes
Wet space: No
Addition: No
Conversion: No