

Home data report

5832 Lakemont Drive, Roanoke, Virginia 24018, United States

 **2**
Half baths

 **1**
Garages

Home data report

5832 Lakemont Drive, Roanoke, Virginia 24018, United States



Room dimensions

Floor 1

Total:2792sqft

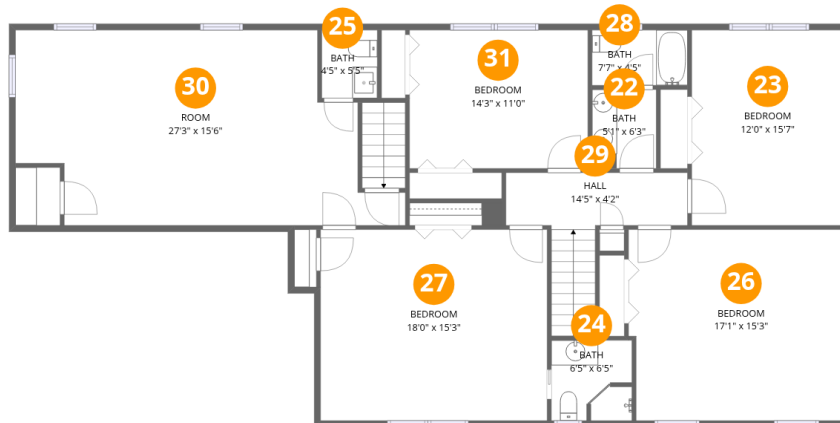
Excluded: 1383sqft

#		Dimensions	sqft	Counted as living area
1	Foyer	9'4" x 15'7"	145 sq. ft	Yes
2	Kitchen	19'9" x 15'11"	314 sq. ft	Yes
3	Sun Room	18'11" x 17'9"	335 sq. ft	Yes
4	Breakfast Area	9'11" x 10'6"	105 sq. ft	Yes
5	Hall	7'8" x 3'8"	28 sq. ft	Yes
6	W.I.C.	6'8" x 10'0"	67 sq. ft	Yes
7	Family Room	20'2" x 22'7"	455 sq. ft	Yes
8	Living Room	20'7" x 17'3"	354 sq. ft	Yes
9	Pantry	9'7" x 3'1"	29 sq. ft	Yes
10	Hall	3'5" x 6'11"	24 sq. ft	Yes
11	Bath	7'4" x 3'2"	23 sq. ft	Yes

Home data report

5832 Lakemont Drive, Roanoke, Virginia 24018, United States

#		Dimensions	sqft	Counted as living area
12	Office	12'3" x 15'3"	187 sq. ft	Yes
13	Patio	9'4" x 23'3"	218 sq. ft	No
14	Hall	10'6" x 5'2"	54 sq. ft	Yes
15	Garage	23'10" x 22'0"	523 sq. ft	No
16	W.I.C.	5'2" x 6'11"	36 sq. ft	Yes
17	Primary Bedroom	19'5" x 15'3"	295 sq. ft	Yes
18	Bath	16'0" x 8'4"	133 sq. ft	Yes
19	Patio	29'10" x 25'6"	761 sq. ft	No
20	Laundry	8'4" x 10'6"	88 sq. ft	Yes
21	Dining Area	20'3" x 10'6"	213 sq. ft	Yes



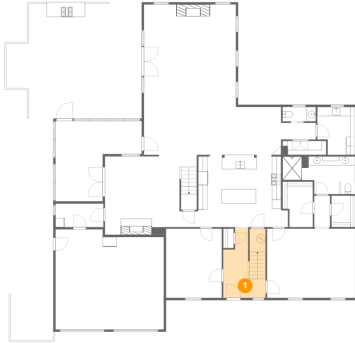
Room dimensions

Floor 2

Total:1684sqft Excluded: 0sqft

#		Dimensions	sqft	Counted as living area
22	Bath	5'1" x 6'3"	32 sq. ft	Yes
23	Bedroom	12'0" x 15'7"	187 sq. ft	Yes
24	Bath	6'5" x 6'5"	41 sq. ft	Yes
25	Bath	4'5" x 5'5"	24 sq. ft	Yes
26	Bedroom	17'1" x 15'3"	260 sq. ft	Yes
27	Bedroom	18'0" x 15'3"	275 sq. ft	Yes
28	Bath	7'7" x 4'5"	34 sq. ft	Yes
29	Hall	14'5" x 4'2"	60 sq. ft	Yes
30	Room	27'3" x 15'6"	424 sq. ft	Yes
31	Bedroom	14'3" x 11'0"	157 sq. ft	Yes

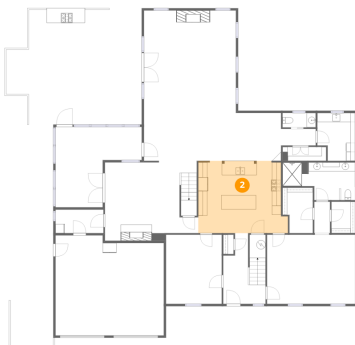
1 Floor 1 - Foyer



Dimensions: 9'4" x 15'7"
Area: 145 sq. ft
Counted as living area: Yes

Heated: Yes
Finished: Yes
Enclosed: Yes
Contiguous: Yes
Permitted: Yes
Wet space: No
Addition: No
Conversion: No

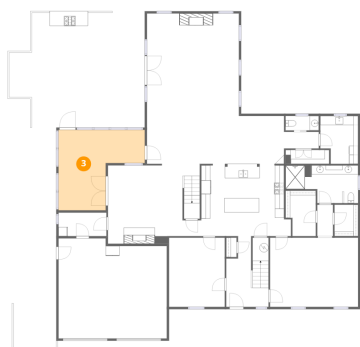
2 Floor 1 - Kitchen



Dimensions: 19'9" x 15'11"
Area: 314 sq. ft
Counted as living area: Yes

Heated: Yes
Finished: Yes
Enclosed: Yes
Contiguous: Yes
Permitted: Yes
Wet space: No
Addition: No
Conversion: No

3 Floor 1 - Sun Room



Dimensions: 18'11" x 17'9"
Area: 335 sq. ft
Counted as living area: Yes

Heated: Yes
Finished: Yes
Enclosed: Yes
Contiguous: Yes
Permitted: Yes
Wet space: No
Addition: No
Conversion: No

4 Floor 1 - Breakfast Area



Dimensions: 9'11" x 10'6"
Area: 105 sq. ft
Counted as living area: Yes

Heated: Yes
Finished: Yes
Enclosed: Yes
Contiguous: Yes
Permitted: Yes
Wet space: No
Addition: No
Conversion: No

5 Floor 1 - Hall



Dimensions: 7'8" x 3'8"
Area: 28 sq. ft
Counted as living area: Yes

Heated: Yes
Finished: Yes
Enclosed: Yes
Contiguous: Yes
Permitted: Yes
Wet space: No
Addition: No
Conversion: No

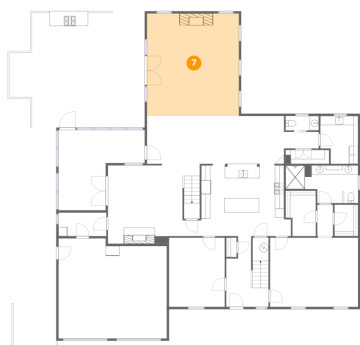
6 Floor 1 - W.I.C.



Dimensions: 6'8" x 10'0"
Area: 67 sq. ft
Counted as living area: Yes

Heated: Yes
Finished: Yes
Enclosed: Yes
Contiguous: Yes
Permitted: Yes
Wet space: No
Addition: No
Conversion: No

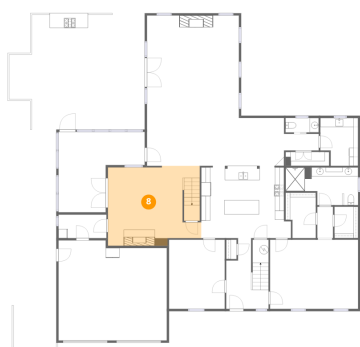
7 Floor 1 - Family Room



Dimensions: 20'2" x 22'7"
Area: 455 sq. ft
Counted as living area: Yes

Heated: Yes
Finished: Yes
Enclosed: Yes
Contiguous: Yes
Permitted: Yes
Wet space: No
Addition: No
Conversion: No

8 Floor 1 - Living Room



Dimensions: 20'7" x 17'3"
Area: 354 sq. ft
Counted as living area: Yes

Heated: Yes
Finished: Yes
Enclosed: Yes
Contiguous: Yes
Permitted: Yes
Wet space: No
Addition: No
Conversion: No

9 Floor 1 - Pantry



Dimensions: 9'7" x 3'1"
Area: 29 sq. ft
Counted as living area: Yes

Heated: Yes
Finished: Yes
Enclosed: Yes
Contiguous: Yes
Permitted: Yes
Wet space: No
Addition: No
Conversion: No

10 Floor 1 - Hall



Dimensions: 3'5" x 6'11"
Area: 24 sq. ft
Counted as living area: Yes

Heated: Yes
Finished: Yes
Enclosed: Yes
Contiguous: Yes
Permitted: Yes
Wet space: No
Addition: No
Conversion: No

11 Floor 1 - Bath



Dimensions: 7'4" x 3'2"
Area: 23 sq. ft
Counted as living area: Yes

Heated: Yes
Finished: Yes
Enclosed: Yes
Contiguous: Yes
Permitted: Yes
Wet space: Yes
Addition: No
Conversion: No

12 Floor 1 - Office



Dimensions: 12'3" x 15'3"
Area: 187 sq. ft
Counted as living area: Yes

Heated: Yes
Finished: Yes
Enclosed: Yes
Contiguous: Yes
Permitted: Yes
Wet space: No
Addition: No
Conversion: No

13 Floor 1 - Patio



Dimensions: 9'4" x 23'3"
Area: 218 sq. ft
Counted as living area: No

Heated: No
Finished: No
Enclosed: No
Contiguous: Yes
Permitted: Yes
Wet space: No
Addition: No
Conversion: No

14 Floor 1 - Hall



Dimensions: 10'6" x 5'2"
Area: 54 sq. ft
Counted as living area: Yes

Heated: Yes
Finished: Yes
Enclosed: Yes
Contiguous: Yes
Permitted: Yes
Wet space: No
Addition: No
Conversion: No

15 Floor 1 - Garage



Dimensions: 23'10" x 22'0"

Area: 523 sq. ft

Counted as living area: No

Heated: No

Finished: No

Enclosed: Yes

Contiguous: Yes

Permitted: Yes

Wet space: No

Addition: No

Conversion: No

16 Floor 1 - W.I.C.



Dimensions: 5'2" x 6'11"

Area: 36 sq. ft

Counted as living area: Yes

Heated: Yes

Finished: Yes

Enclosed: Yes

Contiguous: Yes

Permitted: Yes

Wet space: No

Addition: No

Conversion: No

17 Floor 1 - Primary Bedroom



Dimensions: 19'5" x 15'3"

Area: 295 sq. ft

Counted as living area: Yes

Heated: Yes

Finished: Yes

Enclosed: Yes

Contiguous: Yes

Permitted: Yes

Wet space: No

Addition: No

Conversion: No

18 Floor 1 - Bath



Dimensions: 16'0" x 8'4"
Area: 133 sq. ft
Counted as living area: Yes

Heated: Yes
Finished: Yes
Enclosed: Yes
Contiguous: Yes
Permitted: Yes
Wet space: Yes
Addition: No
Conversion: No

19 Floor 1 - Patio



Dimensions: 29'10" x 25'6"
Area: 761 sq. ft
Counted as living area: No

Heated: No
Finished: No
Enclosed: No
Contiguous: Yes
Permitted: Yes
Wet space: No
Addition: No
Conversion: No

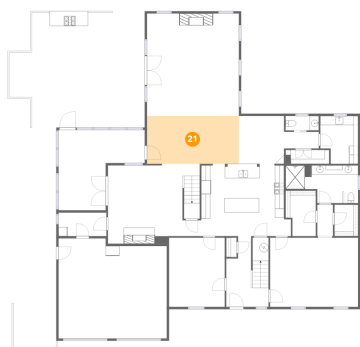
20 Floor 1 - Laundry



Dimensions: 8'4" x 10'6"
Area: 88 sq. ft
Counted as living area: Yes

Heated: Yes
Finished: Yes
Enclosed: Yes
Contiguous: Yes
Permitted: Yes
Wet space: No
Addition: No
Conversion: No

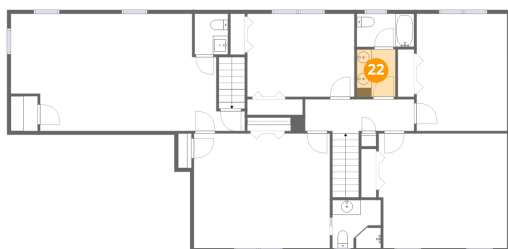
21 Floor 1 - Dining Area



Dimensions: 20'3" x 10'6"
Area: 213 sq. ft
Counted as living area: Yes

Heated: Yes
Finished: Yes
Enclosed: Yes
Contiguous: Yes
Permitted: Yes
Wet space: No
Addition: No
Conversion: No

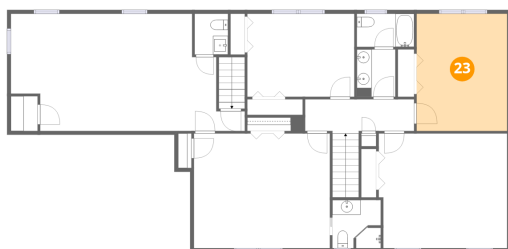
22 Floor 2 - Bath



Dimensions: 5'1" x 6'3"
Area: 32 sq. ft
Counted as living area: Yes

Heated: Yes
Finished: Yes
Enclosed: Yes
Contiguous: Yes
Permitted: Yes
Wet space: Yes
Addition: No
Conversion: No

23 Floor 2 - Bedroom



Dimensions: 12'0" x 15'7"
Area: 187 sq. ft
Counted as living area: Yes

Heated: Yes
Finished: Yes
Enclosed: Yes
Contiguous: Yes
Permitted: Yes
Wet space: No
Addition: No
Conversion: No

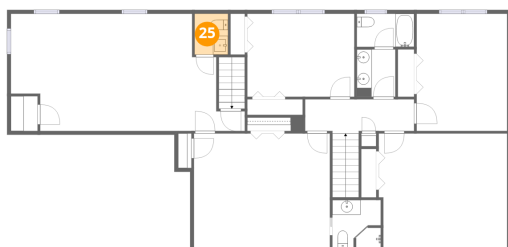
24 Floor 2 - Bath



Dimensions: 6'5" x 6'5"
Area: 41 sq. ft
Counted as living area: Yes

Heated: Yes
Finished: Yes
Enclosed: Yes
Contiguous: Yes
Permitted: Yes
Wet space: Yes
Addition: No
Conversion: No

25 Floor 2 - Bath



Dimensions: 4'5" x 5'5"
Area: 24 sq. ft
Counted as living area: Yes

Heated: Yes
Finished: Yes
Enclosed: Yes
Contiguous: Yes
Permitted: Yes
Wet space: Yes
Addition: No
Conversion: No

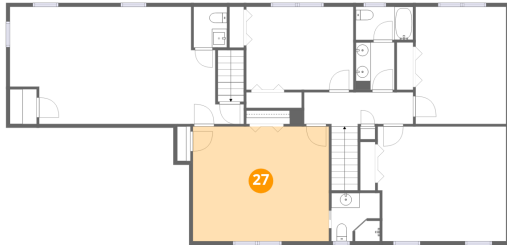
26 Floor 2 - Bedroom



Dimensions: 17'1" x 15'3"
Area: 260 sq. ft
Counted as living area: Yes

Heated: Yes
Finished: Yes
Enclosed: Yes
Contiguous: Yes
Permitted: Yes
Wet space: No
Addition: No
Conversion: No

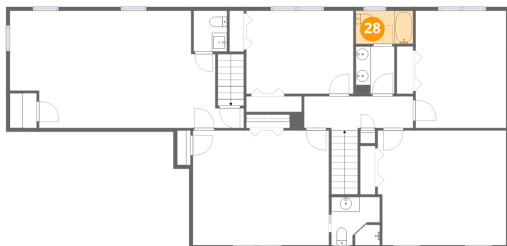
27 Floor 2 - Bedroom



Dimensions: 18'0" x 15'3"
Area: 275 sq. ft
Counted as living area: Yes

Heated: Yes
Finished: Yes
Enclosed: Yes
Contiguous: Yes
Permitted: Yes
Wet space: No
Addition: No
Conversion: No

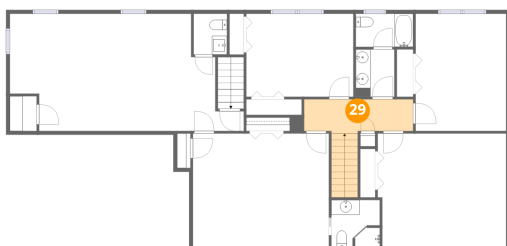
28 Floor 2 - Bath



Dimensions: 7'7" x 4'5"
Area: 34 sq. ft
Counted as living area: Yes

Heated: Yes
Finished: Yes
Enclosed: Yes
Contiguous: Yes
Permitted: Yes
Wet space: Yes
Addition: No
Conversion: No

29 Floor 2 - Hall



Dimensions: 14'5" x 4'2"
Area: 60 sq. ft
Counted as living area: Yes

Heated: Yes
Finished: Yes
Enclosed: Yes
Contiguous: Yes
Permitted: Yes
Wet space: No
Addition: No
Conversion: No

30 Floor 2 - Room



Dimensions: 27'3" x 15'6"
Area: 424 sq. ft
Counted as living area: Yes

Heated: Yes
Finished: Yes
Enclosed: Yes
Contiguous: Yes
Permitted: Yes
Wet space: No
Addition: No
Conversion: No

31 Floor 2 - Bedroom



Dimensions: 14'3" x 11'0"
Area: 157 sq. ft
Counted as living area: Yes

Heated: Yes
Finished: Yes
Enclosed: Yes
Contiguous: Yes
Permitted: Yes
Wet space: No
Addition: No
Conversion: No