

**Total Area: 3132 sq. ft**

Basement: 1337 sq. ft, 1st Floor: 1795 sq. ft

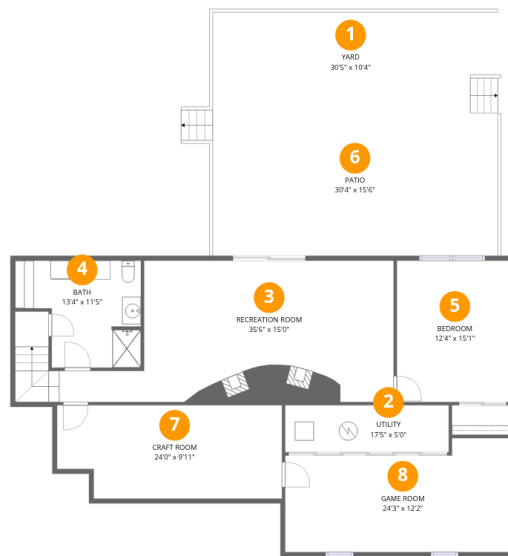
Excluded: Patio 483 sq. ft, Utility 87 sq. ft, Garage 455 sq. ft, Deck 173 sq. ft, Porch 128 sq. ft, Walls: 227 sq. ft

## Property summary



# Home data report

## 3063 Bluffwood Pl, St. Joseph, MI, US



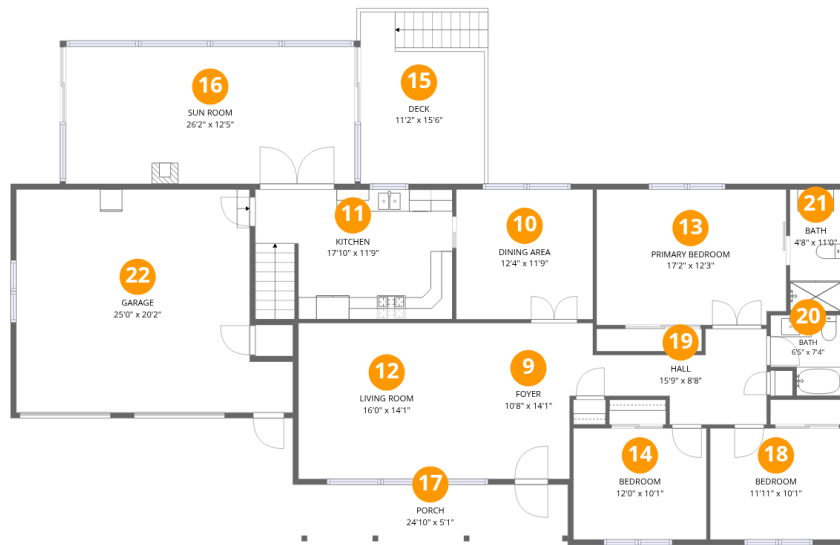
### Room dimensions

Floor 1 Below grade

Total:1337sqft

Excluded: 570sqft

#		Dimensions	sqft	Counted as living area
1	Yard	30'5" x 10'4"	315 sq. ft	No
2	Utility	17'5" x 5'0"	87 sq. ft	No
3	Recreation Room	35'6" x 15'0"	469 sq. ft	Yes
4	Bath	13'4" x 11'5"	127 sq. ft	Yes
5	Bedroom	12'4" x 15'1"	186 sq. ft	Yes
6	Patio	30'4" x 15'6"	483 sq. ft	No
7	Craft Room	24'0" x 9'11"	226 sq. ft	Yes
8	Game Room	24'3" x 12'2"	262 sq. ft	Yes



## Room dimensions

Floor 2

Total: 1795 sqft

Excluded: 756 sqft

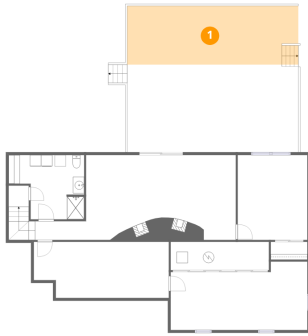
#		Dimensions	sqft	Counted as living area
9	Foyer	10'8" x 14'1"	135 sq. ft	Yes
10	Dining Area	12'4" x 11'9"	145 sq. ft	Yes
11	Kitchen	17'10" x 11'9"	207 sq. ft	Yes
12	Living Room	16'0" x 14'1"	225 sq. ft	Yes
13	Primary Bedroom	17'2" x 12'3"	208 sq. ft	Yes
14	Bedroom	12'0" x 10'1"	121 sq. ft	Yes
15	Deck	11'2" x 15'6"	173 sq. ft	No
16	Sun Room	26'2" x 12'5"	325 sq. ft	Yes
17	Porch	24'10" x 5'1"	128 sq. ft	No
18	Bedroom	11'11" x 10'1"	120 sq. ft	Yes
19	Hall	15'9" x 8'8"	94 sq. ft	Yes

Home data report

**3063 Bluffwood Pl, St. Joseph, MI, US**

#		Dimensions	sqft	Counted as living area
20	Bath	6'5" x 7'4"	41 sq. ft	Yes
21	Bath	4'8" x 11'0"	52 sq. ft	Yes
22	Garage	25'0" x 20'2"	444 sq. ft	No

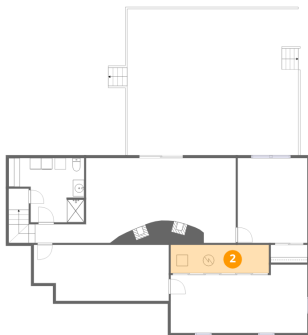
## 1 Floor 1 - Yard



Dimensions: 30'5" x 10'4"  
Area: 315 sq. ft  
Counted as living area: No

Heated: No  
Finished: No  
Enclosed: No  
Contiguous: Yes  
Permitted: No  
Wet space: No  
Addition: No  
Conversion: No

## 2 Floor 1 - Utility



Dimensions: 17'5" x 5'0"  
Area: 87 sq. ft  
Counted as living area: No

Heated: Yes  
Finished: No  
Enclosed: Yes  
Contiguous: Yes  
Permitted: Yes  
Wet space: No  
Addition: No  
Conversion: No

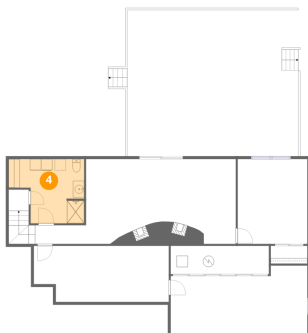
### 3 Floor 1 - Recreation Room



Dimensions: 35'6" x 15'0"  
Area: 469 sq. ft  
Counted as living area: Yes

Heated: Yes  
Finished: Yes  
Enclosed: Yes  
Contiguous: Yes  
Permitted: Yes  
Wet space: No  
Addition: No  
Conversion: No

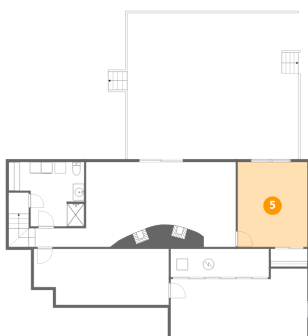
### 4 Floor 1 - Bath



Dimensions: 13'4" x 11'5"  
Area: 127 sq. ft  
Counted as living area: Yes

Heated: Yes  
Finished: Yes  
Enclosed: Yes  
Contiguous: Yes  
Permitted: Yes  
Wet space: Yes  
Addition: No  
Conversion: No

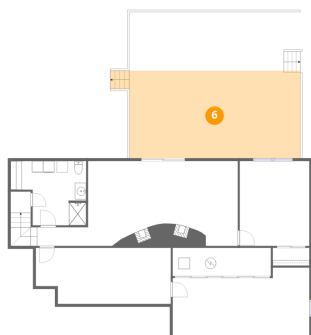
### 5 Floor 1 - Bedroom



Dimensions: 12'4" x 15'1"  
Area: 186 sq. ft  
Counted as living area: Yes

Heated: Yes  
Finished: Yes  
Enclosed: Yes  
Contiguous: Yes  
Permitted: Yes  
Wet space: No  
Addition: No  
Conversion: No

## 6 Floor 1 - Patio



Dimensions: 30'4" x 15'6"  
Area: 483 sq. ft  
Counted as living area: No

Heated: No  
Finished: No  
Enclosed: No  
Contiguous: Yes  
Permitted: Yes  
Wet space: No  
Addition: No  
Conversion: No

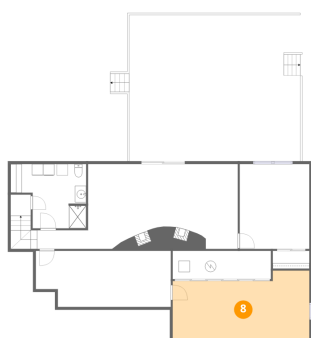
## 7 Floor 1 - Craft Room



Dimensions: 24'0" x 9'11"  
Area: 226 sq. ft  
Counted as living area: Yes

Heated: Yes  
Finished: Yes  
Enclosed: Yes  
Contiguous: Yes  
Permitted: Yes  
Wet space: No  
Addition: No  
Conversion: No

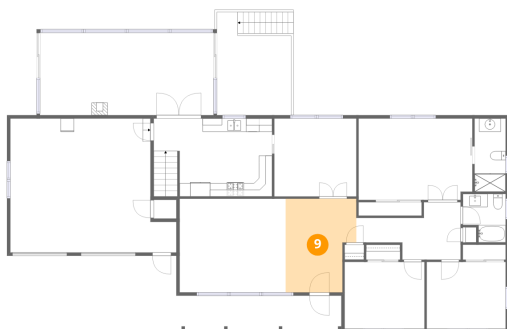
## 8 Floor 1 - Game Room



Dimensions: 24'3" x 12'2"  
Area: 262 sq. ft  
Counted as living area: Yes

Heated: Yes  
Finished: Yes  
Enclosed: Yes  
Contiguous: Yes  
Permitted: Yes  
Wet space: No  
Addition: No  
Conversion: No

### 9 Floor 2 - Foyer



Dimensions: 10'8" x 14'1"  
Area: 135 sq. ft  
Counted as living area: Yes

Heated: Yes  
Finished: Yes  
Enclosed: Yes  
Contiguous: Yes  
Permitted: Yes  
Wet space: No  
Addition: No  
Conversion: No

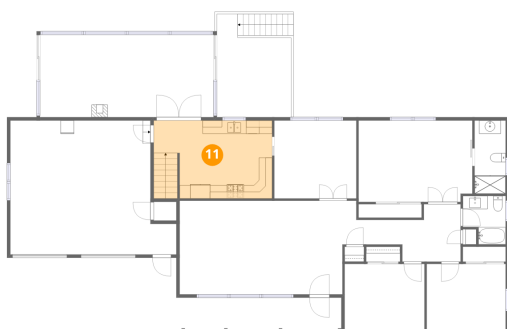
### 10 Floor 2 - Dining Area



Dimensions: 12'4" x 11'9"  
Area: 145 sq. ft  
Counted as living area: Yes

Heated: Yes  
Finished: Yes  
Enclosed: Yes  
Contiguous: Yes  
Permitted: Yes  
Wet space: No  
Addition: No  
Conversion: No

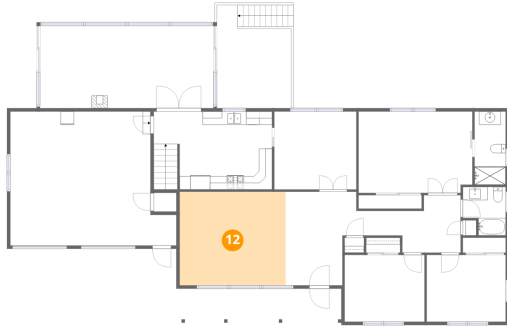
### 11 Floor 2 - Kitchen



Dimensions: 17'10" x 11'9"  
Area: 207 sq. ft  
Counted as living area: Yes

Heated: Yes  
Finished: Yes  
Enclosed: Yes  
Contiguous: Yes  
Permitted: Yes  
Wet space: No  
Addition: No  
Conversion: No

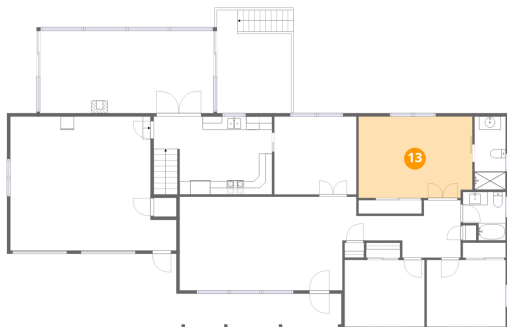
## 12 Floor 2 - Living Room



Dimensions: 16'0" x 14'1"  
Area: 225 sq. ft  
Counted as living area: Yes

Heated: Yes  
Finished: Yes  
Enclosed: Yes  
Contiguous: Yes  
Permitted: Yes  
Wet space: No  
Addition: No  
Conversion: No

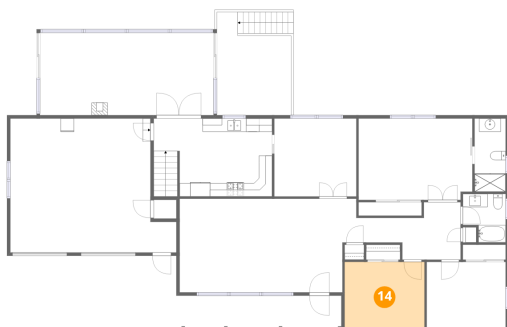
## 13 Floor 2 - Primary Bedroom



Dimensions: 17'2" x 12'3"  
Area: 208 sq. ft  
Counted as living area: Yes

Heated: Yes  
Finished: Yes  
Enclosed: Yes  
Contiguous: Yes  
Permitted: Yes  
Wet space: No  
Addition: No  
Conversion: No

## 14 Floor 2 - Bedroom



Dimensions: 12'0" x 10'1"  
Area: 121 sq. ft  
Counted as living area: Yes

Heated: Yes  
Finished: Yes  
Enclosed: Yes  
Contiguous: Yes  
Permitted: Yes  
Wet space: No  
Addition: No  
Conversion: No

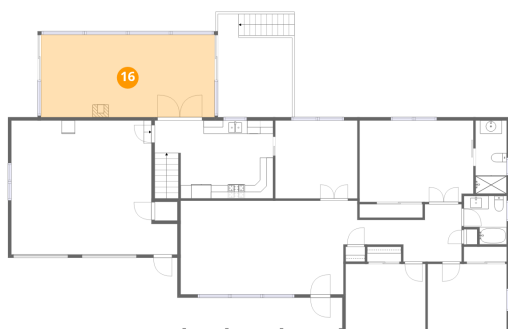
### 15 Floor 2 - Deck



Dimensions: 11'2" x 15'6"  
Area: 173 sq. ft  
Counted as living area: No

Heated: No  
Finished: No  
Enclosed: No  
Contiguous: Yes  
Permitted: Yes  
Wet space: No  
Addition: No  
Conversion: No

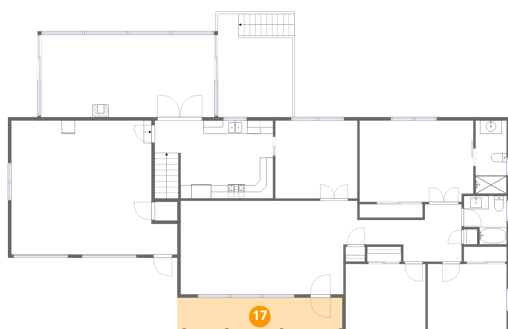
### 16 Floor 2 - Sun Room



Dimensions: 26'2" x 12'5"  
Area: 325 sq. ft  
Counted as living area: Yes

Heated: Yes  
Finished: Yes  
Enclosed: Yes  
Contiguous: Yes  
Permitted: Yes  
Wet space: No  
Addition: No  
Conversion: No

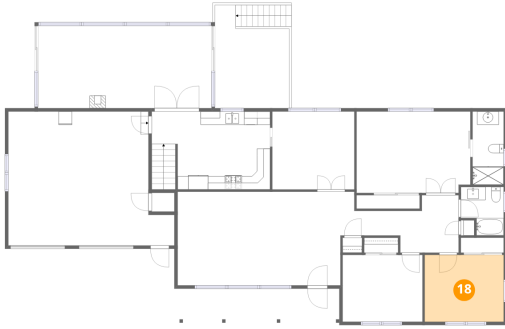
### 17 Floor 2 - Porch



Dimensions: 24'10" x 5'1"  
Area: 128 sq. ft  
Counted as living area: No

Heated: No  
Finished: No  
Enclosed: No  
Contiguous: Yes  
Permitted: Yes  
Wet space: No  
Addition: No  
Conversion: No

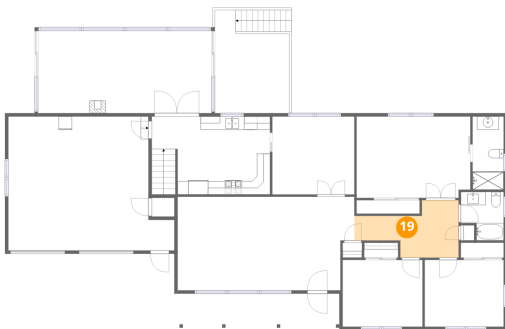
### 18 Floor 2 - Bedroom



Dimensions: 11'11" x 10'1"  
Area: 120 sq. ft  
Counted as living area: Yes

Heated: Yes  
Finished: Yes  
Enclosed: Yes  
Contiguous: Yes  
Permitted: Yes  
Wet space: No  
Addition: No  
Conversion: No

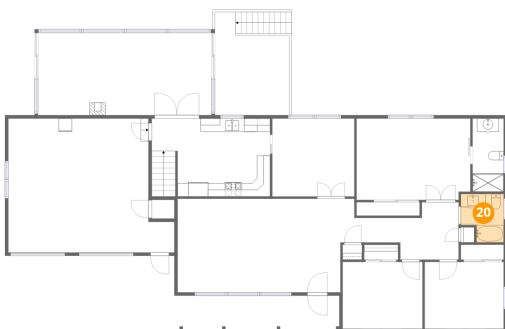
### 19 Floor 2 - Hall



Dimensions: 15'9" x 8'8"  
Area: 94 sq. ft  
Counted as living area: Yes

Heated: Yes  
Finished: Yes  
Enclosed: Yes  
Contiguous: Yes  
Permitted: Yes  
Wet space: No  
Addition: No  
Conversion: No

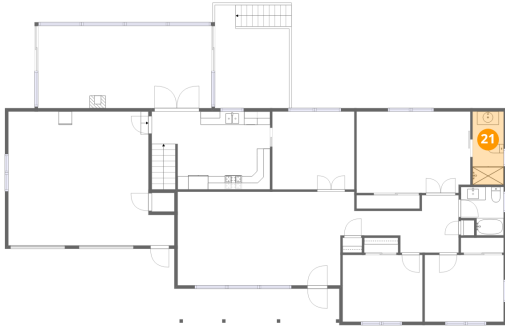
### 20 Floor 2 - Bath



Dimensions: 6'5" x 7'4"  
Area: 41 sq. ft  
Counted as living area: Yes

Heated: Yes  
Finished: Yes  
Enclosed: Yes  
Contiguous: Yes  
Permitted: Yes  
Wet space: Yes  
Addition: No  
Conversion: No

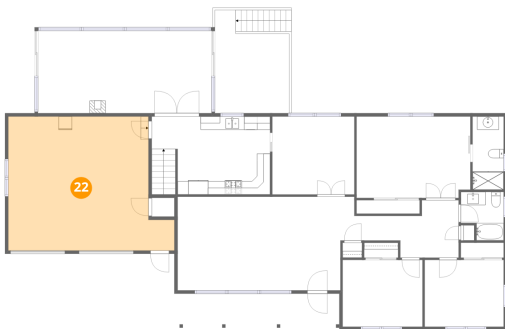
## 21 Floor 2 - Bath



Dimensions: 4'8" x 11'0"  
Area: 52 sq. ft  
Counted as living area: Yes

Heated: Yes  
Finished: Yes  
Enclosed: Yes  
Contiguous: Yes  
Permitted: Yes  
Wet space: Yes  
Addition: No  
Conversion: No

## 22 Floor 2 - Garage



Dimensions: 25'0" x 20'2"  
Area: 444 sq. ft  
Counted as living area: No

Heated: No  
Finished: No  
Enclosed: Yes  
Contiguous: Yes  
Permitted: Yes  
Wet space: No  
Addition: No  
Conversion: No