

# Home data report

## 1407 Maple St, McKeesport, PA, US



### Total Area: 1685 sq. ft

Basement: 0 sq. ft, 1st Floor: 664 sq. ft, 2nd Floor: 642 sq. ft, 3rd Floor: 379 sq. ft

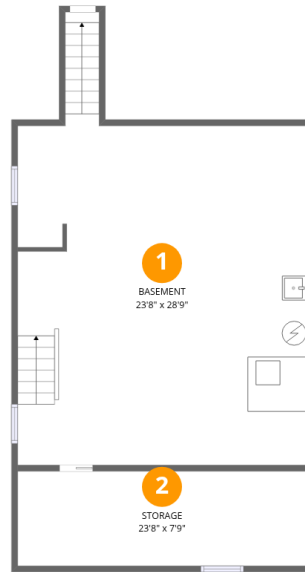
Excluded: Storage 184 sq. ft, Basement 684 sq. ft, Porch 171 sq. ft, Covered patio 185 sq. ft, Walls: 233 sq. ft

### Property summary

 **4** Floors

 **4** Bedrooms

 **2** Bathrooms



## Room dimensions

Floor 1 Below grade

Total: 0sqft

Excluded: 868sqft

#		Dimensions	sqft	Counted as living area
1	Basement	23'8" x 28'9"	682 sq. ft	No
2	Storage	23'8" x 7'9"	184 sq. ft	No

# Home data report

## 1407 Maple St, McKeesport, PA, US



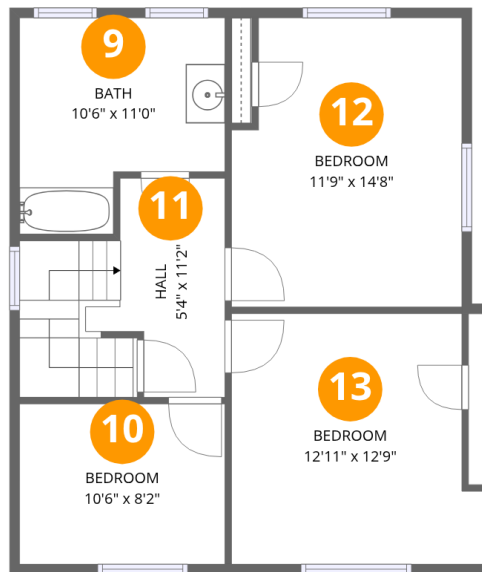
### Room dimensions

Floor 2

Total:664sqft

Excluded: 356sqft

#		Dimensions	sqft	Counted as living area
3	Porch	22'1" x 7'9"	171 sq. ft	No
4	Foyer	9'3" x 13'1"	121 sq. ft	Yes
5	Covered Patio	24'8" x 7'5"	184 sq. ft	No
6	Living Room	15'6" x 14'9"	228 sq. ft	Yes
7	Dining Room	14'1" x 12'9"	180 sq. ft	Yes
8	Kitchen	9'3" x 14'9"	136 sq. ft	Yes



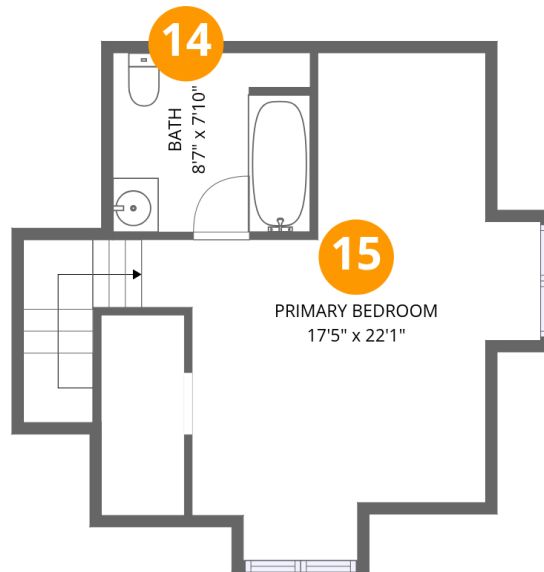
## Room dimensions

Floor 3

Total:642sqft

Excluded: 0sqft

#		Dimensions	sqft	Counted as living area
9	Bath	10'6" x 11'0"	115 sq. ft	Yes
10	Bedroom	10'6" x 8'2"	85 sq. ft	Yes
11	Hall	5'4" x 11'2"	60 sq. ft	Yes
12	Bedroom	11'9" x 14'8"	172 sq. ft	Yes
13	Bedroom	12'11" x 12'9"	164 sq. ft	Yes



## Room dimensions

Floor 4

Total:379sqft Excluded: 0sqft

#		Dimensions	sqft	Counted as living area
14	Bath	8'7" x 7'10"	67 sq. ft	Yes
15	Primary Bedroom	17'5" x 22'1"	384 sq. ft	Yes

## 1 Floor 1 - Basement

---



Dimensions: 23'8" x 28'9"  
Area: 682 sq. ft  
Counted as living area: No

Heated: Yes  
Finished: No  
Enclosed: Yes  
Contiguous: Yes  
Permitted: Yes  
Wet space: No  
Addition: No  
Conversion: No

## 2 Floor 1 - Storage

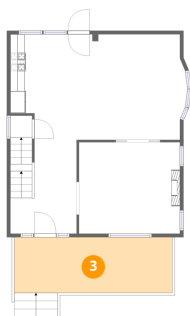
---



Dimensions: 23'8" x 7'9"  
Area: 184 sq. ft  
Counted as living area: No

Heated: No  
Finished: No  
Enclosed: No  
Contiguous: Yes  
Permitted: Yes  
Wet space: No  
Addition: No  
Conversion: No

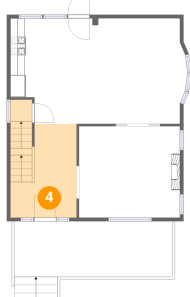
### 3 Floor 2 - Porch



Dimensions: 22'1" x 7'9"  
Area: 171 sq. ft  
Counted as living area: No

Heated: No  
Finished: No  
Enclosed: No  
Contiguous: Yes  
Permitted: Yes  
Wet space: No  
Addition: No  
Conversion: No

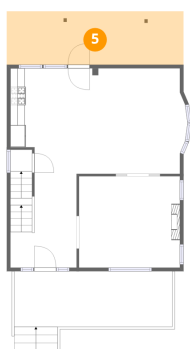
### 4 Floor 2 - Foyer



Dimensions: 9'3" x 13'1"  
Area: 121 sq. ft  
Counted as living area: Yes

Heated: Yes  
Finished: Yes  
Enclosed: Yes  
Contiguous: Yes  
Permitted: Yes  
Wet space: No  
Addition: No  
Conversion: No

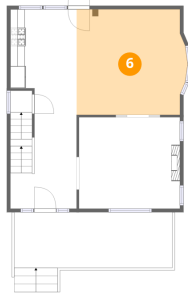
### 5 Floor 2 - Covered Patio



Dimensions: 24'8" x 7'5"  
Area: 184 sq. ft  
Counted as living area: No

Heated: No  
Finished: No  
Enclosed: No  
Contiguous: Yes  
Permitted: Yes  
Wet space: No  
Addition: No  
Conversion: No

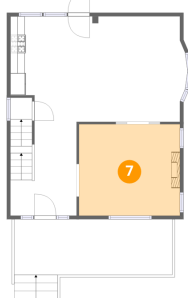
## 6 Floor 2 - Living Room



Dimensions: 15'6" x 14'9"  
Area: 228 sq. ft  
Counted as living area: Yes

Heated: Yes  
Finished: Yes  
Enclosed: Yes  
Contiguous: Yes  
Permitted: Yes  
Wet space: No  
Addition: No  
Conversion: No

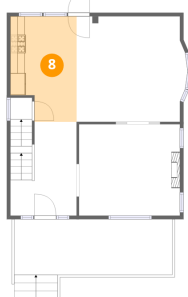
## 7 Floor 2 - Dining Room



Dimensions: 14'1" x 12'9"  
Area: 180 sq. ft  
Counted as living area: Yes

Heated: Yes  
Finished: Yes  
Enclosed: Yes  
Contiguous: Yes  
Permitted: Yes  
Wet space: No  
Addition: No  
Conversion: No

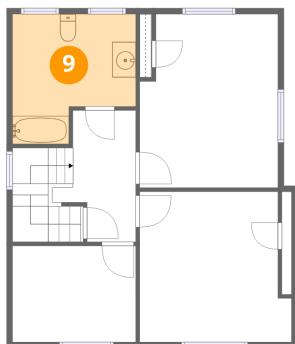
## 8 Floor 2 - Kitchen



Dimensions: 9'3" x 14'9"  
Area: 136 sq. ft  
Counted as living area: Yes

Heated: Yes  
Finished: Yes  
Enclosed: Yes  
Contiguous: Yes  
Permitted: Yes  
Wet space: No  
Addition: No  
Conversion: No

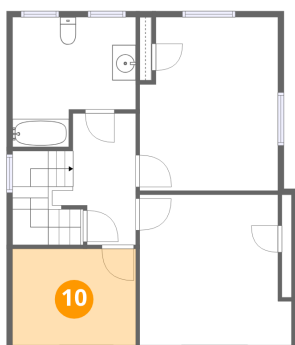
### 9 Floor 3 - Bath



Dimensions: 10'6" x 11'0"  
Area: 115 sq. ft  
Counted as living area: Yes

Heated: Yes  
Finished: Yes  
Enclosed: Yes  
Contiguous: Yes  
Permitted: Yes  
Wet space: Yes  
Addition: No  
Conversion: No

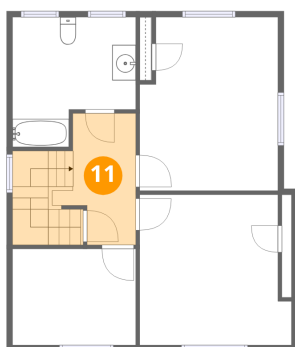
### 10 Floor 3 - Bedroom



Dimensions: 10'6" x 8'2"  
Area: 85 sq. ft  
Counted as living area: Yes

Heated: Yes  
Finished: Yes  
Enclosed: Yes  
Contiguous: Yes  
Permitted: Yes  
Wet space: No  
Addition: No  
Conversion: No

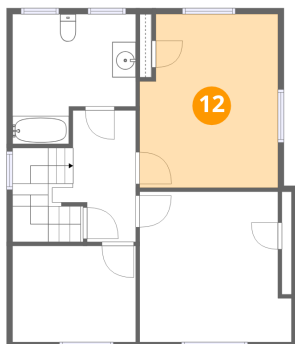
### 11 Floor 3 - Hall



Dimensions: 5'4" x 11'2"  
Area: 60 sq. ft  
Counted as living area: Yes

Heated: Yes  
Finished: Yes  
Enclosed: Yes  
Contiguous: Yes  
Permitted: Yes  
Wet space: No  
Addition: No  
Conversion: No

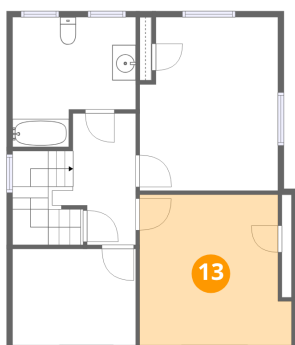
### 12 Floor 3 - Bedroom



Dimensions: 11'9" x 14'8"  
Area: 172 sq. ft  
Counted as living area: Yes

Heated: Yes  
Finished: Yes  
Enclosed: Yes  
Contiguous: Yes  
Permitted: Yes  
Wet space: No  
Addition: No  
Conversion: No

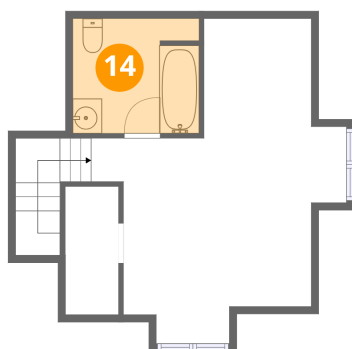
### 13 Floor 3 - Bedroom



Dimensions: 12'11" x 12'9"  
Area: 164 sq. ft  
Counted as living area: Yes

Heated: Yes  
Finished: Yes  
Enclosed: Yes  
Contiguous: Yes  
Permitted: Yes  
Wet space: No  
Addition: No  
Conversion: No

### 14 Floor 4 - Bath

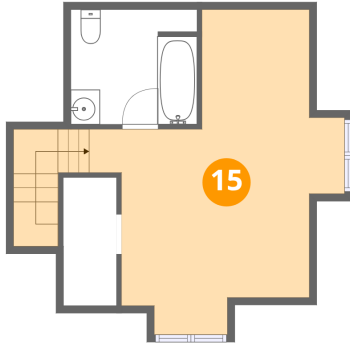


Dimensions: 8'7" x 7'10"  
Area: 67 sq. ft  
Counted as living area: Yes

Heated: Yes  
Finished: Yes  
Enclosed: Yes  
Contiguous: Yes  
Permitted: Yes  
Wet space: Yes  
Addition: No  
Conversion: No

**15** Floor 4 - Primary Bedroom

---



Dimensions: 17'5" x 22'1"  
Area: 384 sq. ft  
Counted as living area: Yes

Heated: Yes  
Finished: Yes  
Enclosed: Yes  
Contiguous: Yes  
Permitted: Yes  
Wet space: No  
Addition: No  
Conversion: No