

Home data report

38 Smith Street, St. Albans, Franklin County, Vermont, United States, 05478



Total Area: 1766 sq. ft

1st Floor: 876 sq. ft, 2nd Floor: 665 sq. ft, 3rd Floor: 225 sq. ft

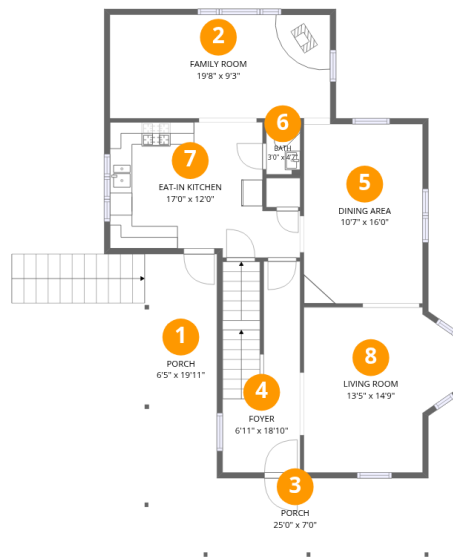
Excluded: Porch 294 sq. ft, Attic 192 sq. ft, Walls: 181 sq. ft

Property summary



Home data report

38 Smith Street, St. Albans, Franklin County, Vermont, United States, 05478



Room dimensions

Floor 1

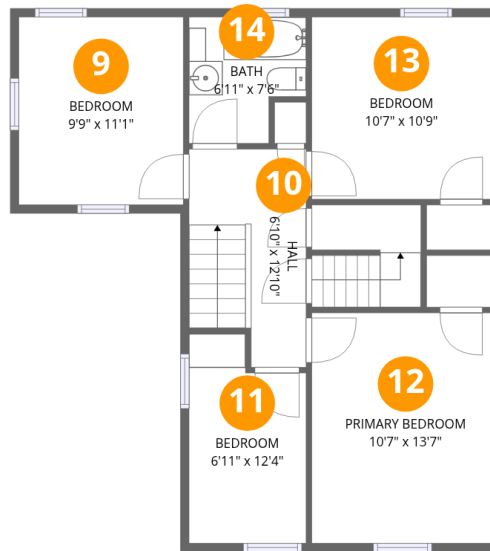
Total:876sqft

Excluded: 294sqft

#		Dimensions	sqft	Counted as living area
1	Porch	6'5" x 19'11"	129 sq. ft	No
2	Family Room	19'8" x 9'3"	182 sq. ft	Yes
3	Porch	25'0" x 7'0"	165 sq. ft	No
4	Foyer	6'11" x 18'10"	127 sq. ft	Yes
5	Dining Area	10'7" x 16'0"	171 sq. ft	Yes
6	Bath	3'0" x 4'7"	14 sq. ft	Yes
7	Eat-in Kitchen	17'0" x 12'0"	170 sq. ft	Yes
8	Living Room	13'5" x 14'9"	175 sq. ft	Yes

Home data report

38 Smith Street, St. Albans, Franklin County, Vermont, United States, 05478



Room dimensions

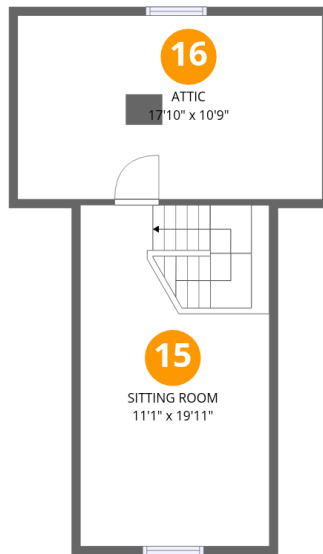
Floor 2

Total:665sqft Excluded: 0sqft

#		Dimensions	sqft	Counted as living area
9	Bedroom	9'9" x 11'1"	108 sq. ft	Yes
10	Hall	6'10" x 12'10"	81 sq. ft	Yes
11	Bedroom	6'11" x 12'4"	77 sq. ft	Yes
12	Primary Bedroom	10'7" x 13'7"	144 sq. ft	Yes
13	Bedroom	10'7" x 10'9"	114 sq. ft	Yes
14	Bath	6'11" x 7'6"	45 sq. ft	Yes

Home data report

38 Smith Street, St. Albans, Franklin County, Vermont, United States, 05478



Room dimensions

Floor 3

Total:225sqft

Excluded: 192sqft

#		Dimensions	sqft	Counted as living area
15	Sitting Room	11'1" x 19'11"	221 sq. ft	Yes
16	Attic	17'10" x 10'9"	192 sq. ft	No

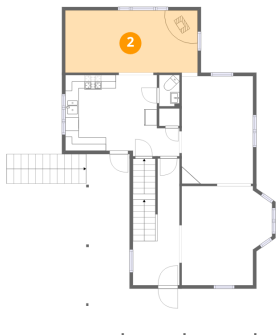
1 Floor 1 - Porch



Dimensions: 6'5" x 19'11"
Area: 129 sq. ft
Counted as living area: No

Heated: No
Finished: No
Enclosed: No
Contiguous: Yes
Permitted: Yes
Wet space: No
Addition: No
Conversion: No

2 Floor 1 - Family Room



Dimensions: 19'8" x 9'3"
Area: 182 sq. ft
Counted as living area: Yes

Heated: Yes
Finished: Yes
Enclosed: Yes
Contiguous: Yes
Permitted: Yes
Wet space: No
Addition: No
Conversion: No

3 Floor 1 - Porch



Dimensions: 25'0" x 7'0"
Area: 165 sq. ft
Counted as living area: No

Heated: No
Finished: No
Enclosed: No
Contiguous: Yes
Permitted: Yes
Wet space: No
Addition: No
Conversion: No

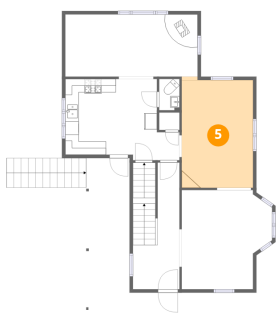
4 Floor 1 - Foyer



Dimensions: 6'11" x 18'10"
Area: 127 sq. ft
Counted as living area: Yes

Heated: Yes
Finished: Yes
Enclosed: Yes
Contiguous: Yes
Permitted: Yes
Wet space: No
Addition: No
Conversion: No

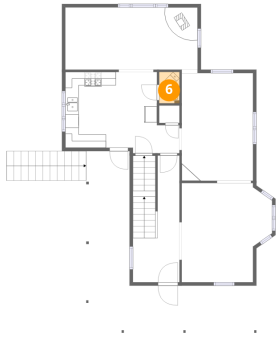
5 Floor 1 - Dining Area



Dimensions: 10'7" x 16'0"
Area: 171 sq. ft
Counted as living area: Yes

Heated: Yes
Finished: Yes
Enclosed: Yes
Contiguous: Yes
Permitted: Yes
Wet space: No
Addition: No
Conversion: No

6 Floor 1 - Bath



Dimensions: 3'0" x 4'7"
Area: 14 sq. ft
Counted as living area: Yes

Heated: Yes
Finished: Yes
Enclosed: Yes
Contiguous: Yes
Permitted: Yes
Wet space: Yes
Addition: No
Conversion: No

7 Floor 1 - Eat-in Kitchen



Dimensions: 17'0" x 12'0"
Area: 170 sq. ft
Counted as living area: Yes

Heated: Yes
Finished: Yes
Enclosed: Yes
Contiguous: Yes
Permitted: Yes
Wet space: No
Addition: No
Conversion: No

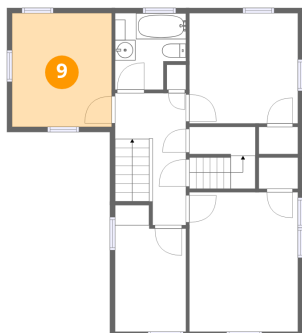
8 Floor 1 - Living Room



Dimensions: 13'5" x 14'9"
Area: 175 sq. ft
Counted as living area: Yes

Heated: Yes
Finished: Yes
Enclosed: Yes
Contiguous: Yes
Permitted: Yes
Wet space: No
Addition: No
Conversion: No

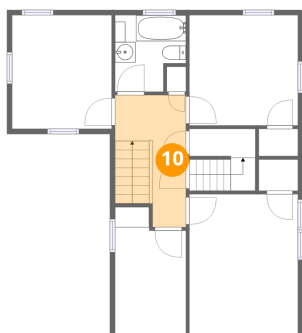
9 Floor 2 - Bedroom



Dimensions: 9'9" x 11'1"
Area: 108 sq. ft
Counted as living area: Yes

Heated: Yes
Finished: Yes
Enclosed: Yes
Contiguous: Yes
Permitted: Yes
Wet space: No
Addition: No
Conversion: No

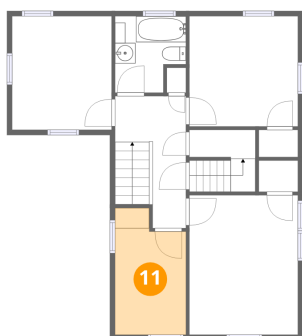
10 Floor 2 - Hall



Dimensions: 6'10" x 12'10"
Area: 81 sq. ft
Counted as living area: Yes

Heated: Yes
Finished: Yes
Enclosed: Yes
Contiguous: Yes
Permitted: Yes
Wet space: No
Addition: No
Conversion: No

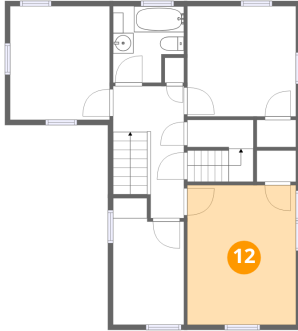
11 Floor 2 - Bedroom



Dimensions: 6'11" x 12'4"
Area: 77 sq. ft
Counted as living area: Yes

Heated: Yes
Finished: Yes
Enclosed: Yes
Contiguous: Yes
Permitted: Yes
Wet space: No
Addition: No
Conversion: No

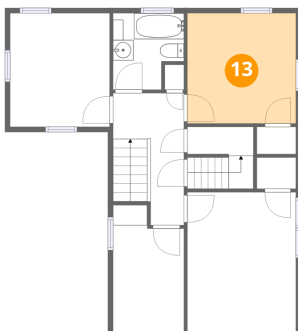
12 Floor 2 - Primary Bedroom



Dimensions: 10'7" x 13'7"
Area: 144 sq. ft
Counted as living area: Yes

Heated: Yes
Finished: Yes
Enclosed: Yes
Contiguous: Yes
Permitted: Yes
Wet space: No
Addition: No
Conversion: No

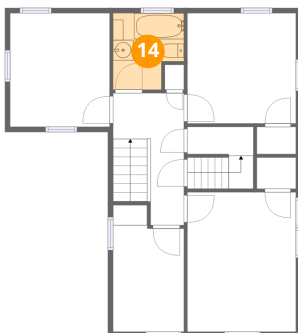
13 Floor 2 - Bedroom



Dimensions: 10'7" x 10'9"
Area: 114 sq. ft
Counted as living area: Yes

Heated: Yes
Finished: Yes
Enclosed: Yes
Contiguous: Yes
Permitted: Yes
Wet space: No
Addition: No
Conversion: No

14 Floor 2 - Bath

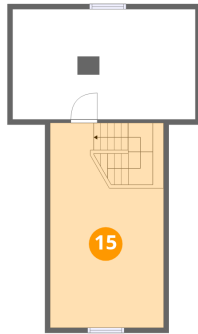


Dimensions: 6'11" x 7'6"
Area: 45 sq. ft
Counted as living area: Yes

Heated: Yes
Finished: Yes
Enclosed: Yes
Contiguous: Yes
Permitted: Yes
Wet space: Yes
Addition: No
Conversion: No

38 Smith Street, St. Albans, Franklin County, Vermont, United States, 05478

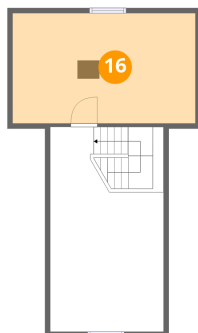
15 Floor 3 - Sitting Room



Dimensions: 11'1" x 19'11"
Area: 221 sq. ft
Counted as living area: No

Heated: Yes
Finished: Yes
Enclosed: Yes
Contiguous: No
Permitted: Yes
Wet space: No
Addition: No
Conversion: No

16 Floor 3 - Attic



Dimensions: 17'10" x 10'9"
Area: 192 sq. ft
Counted as living area: No

Heated: No
Finished: No
Enclosed: Yes
Contiguous: Yes
Permitted: Yes
Wet space: No
Addition: No
Conversion: No