

Home report

326 Lower Clubhouse Drive, Shannondale, Harpers Ferry,
Jefferson County, West Virginia, United States, 25425



Total Area: 5528 sq. ft

Floor 1: 1794 sq. ft, Floor 2: 1817 sq. ft, Floor 3: 1917 sq. ft

Excluded: Utility 223 sq. ft, Patio 209 sq. ft, Porch 555 sq. ft, Balcony 109 sq. ft, Walls: 0 sq. ft

Property summary

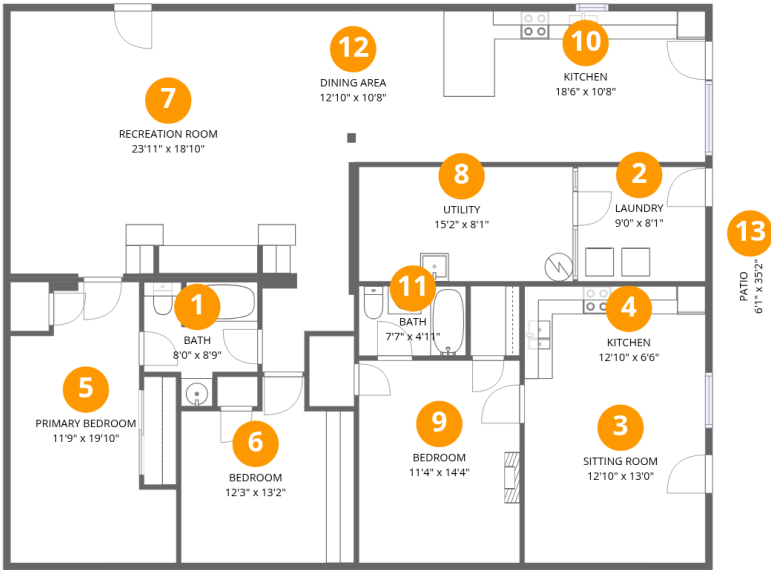
 **3** Floors

 **11** Bedrooms

 **6** Bathrooms

Home report

326 Lower Clubhouse Drive, Shannondale, Harpers Ferry,
Jefferson County, West Virginia, United States, 25425



Room dimensions

Floor 1 Total:1794sqft Excluded: 332sqft

#		Max Dimensions	sqft	Included
1	Bath	8'0" x 8'9"	55 sq. ft	Yes
2	Laundry	9'0" x 8'1"	73 sq. ft	Yes
3	Sitting Room	12'10" x 13'0"	167 sq. ft	Yes
4	Kitchen	12'10" x 6'6"	84 sq. ft	Yes
5	Primary Bedroom	11'9" x 19'10"	183 sq. ft	Yes
6	Bedroom	12'3" x 13'2"	139 sq. ft	Yes
7	Recreation Room	23'11" x 18'10"	420 sq. ft	Yes
8	Utility	15'2" x 8'1"	123 sq. ft	No
9	Bedroom	11'4" x 14'4"	163 sq. ft	Yes
10	Kitchen	18'6" x 10'8"	197 sq. ft	Yes
11	Bath	7'7" x 4'11"	37 sq. ft	Yes

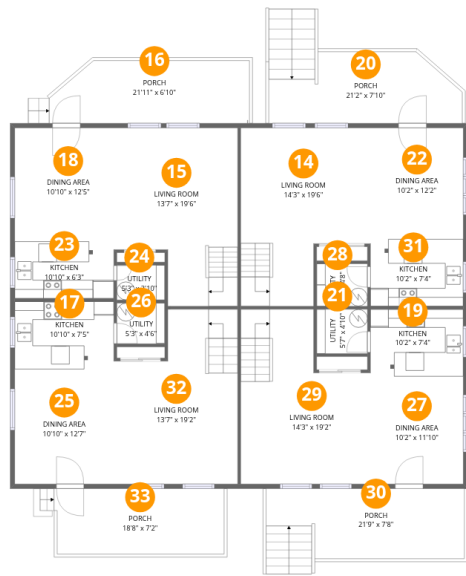
Home report

326 Lower Clubhouse Drive, Shannondale, Harpers Ferry,
Jefferson County, West Virginia, United States, 25425

#		Max Dimensions	sqft	Included
12	Dining Area	12'10" x 10'8"	137 sq. ft	Yes
13	Patio	6'1" x 35'2"	209 sq. ft	No

Home report

326 Lower Clubhouse Drive, Shannondale, Harpers Ferry,
Jefferson County, West Virginia, United States, 25425



Room dimensions

Floor 2 Total:1817sqft Excluded: 655sqft

#		Max Dimensions	sqft	Included
14	Living Room	14'3" x 19'6"	235 sq. ft	Yes
15	Living Room	13'7" x 19'6"	228 sq. ft	Yes
16	Porch	21'11" x 6'10"	141 sq. ft	No
17	Kitchen	10'10" x 7'5"	80 sq. ft	Yes
18	Dining Area	10'10" x 12'5"	135 sq. ft	Yes
19	Kitchen	10'2" x 7'4"	75 sq. ft	Yes
20	Porch	21'2" x 7'10"	138 sq. ft	No
21	Utility	5'7" x 4'10"	27 sq. ft	No
22	Dining Area	10'2" x 12'2"	124 sq. ft	Yes
23	Kitchen	10'10" x 6'3"	68 sq. ft	Yes
24	Utility	5'3" x 3'10"	20 sq. ft	No

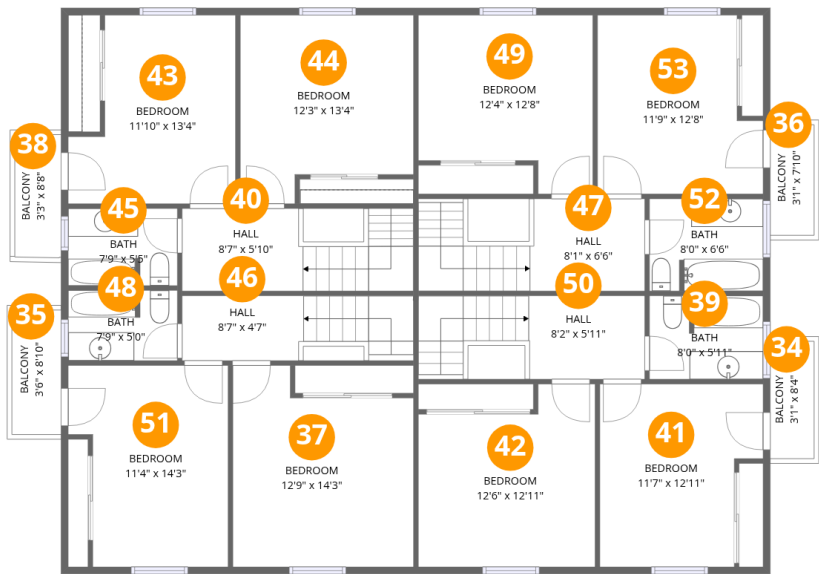
Home report

**326 Lower Clubhouse Drive, Shannondale, Harpers Ferry,
Jefferson County, West Virginia, United States, 25425**

#		Max Dimensions	sqft	Included
25	Dining Area	10'10" x 12'7"	137 sq. ft	Yes
26	Utility	5'3" x 4'6"	23 sq. ft	No
27	Dining Area	10'2" x 11'10"	120 sq. ft	Yes
28	Utility	5'7" x 4'8"	26 sq. ft	No
29	Living Room	14'3" x 19'2"	229 sq. ft	Yes
30	Porch	21'9" x 7'8"	148 sq. ft	No
31	Kitchen	10'2" x 7'4"	75 sq. ft	Yes
32	Living Room	13'7" x 19'2"	226 sq. ft	Yes
33	Porch	18'8" x 7'2"	132 sq. ft	No

Home report

326 Lower Clubhouse Drive, Shannondale, Harpers Ferry,
Jefferson County, West Virginia, United States, 25425



Room dimensions

Floor 3 Total:1917sqft Excluded: 109sqft

#		Max Dimensions	sqft	Included
34	Balcony	3'1" x 8'4"	26 sq. ft	No
35	Balcony	3'6" x 8'10"	31 sq. ft	No
36	Balcony	3'1" x 7'10"	24 sq. ft	No
37	Bedroom	12'9" x 14'3"	162 sq. ft	Yes
38	Balcony	3'3" x 8'8"	28 sq. ft	No
39	Bath	8'0" x 5'11"	47 sq. ft	Yes
40	Hall	8'7" x 5'10"	95 sq. ft	Yes
41	Bedroom	11'7" x 12'11"	134 sq. ft	Yes
42	Bedroom	12'6" x 12'11"	144 sq. ft	Yes
43	Bedroom	11'10" x 13'4"	136 sq. ft	Yes
44	Bedroom	12'3" x 13'4"	146 sq. ft	Yes

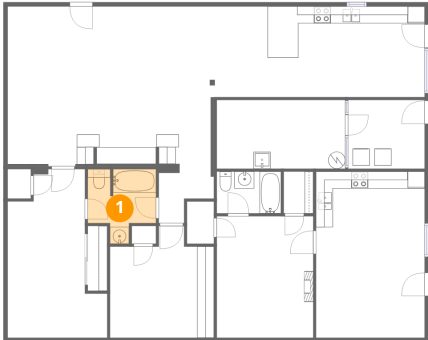
Home report

**326 Lower Clubhouse Drive, Shannondale, Harpers Ferry,
Jefferson County, West Virginia, United States, 25425**

#		Max Dimensions	sqft	Included
45	Bath	7'9" x 5'5"	41 sq. ft	Yes
46	Hall	8'7" x 4'7"	75 sq. ft	Yes
47	Hall	8'1" x 6'6"	104 sq. ft	Yes
48	Bath	7'9" x 5'0"	38 sq. ft	Yes
49	Bedroom	12'4" x 12'8"	136 sq. ft	Yes
50	Hall	8'2" x 5'11"	94 sq. ft	Yes
51	Bedroom	11'4" x 14'3"	145 sq. ft	Yes
52	Bath	8'0" x 6'6"	52 sq. ft	Yes
53	Bedroom	11'9" x 12'8"	134 sq. ft	Yes

326 Lower Clubhouse Drive, Shannondale, Harpers Ferry,
Jefferson County, West Virginia, United States, 25425

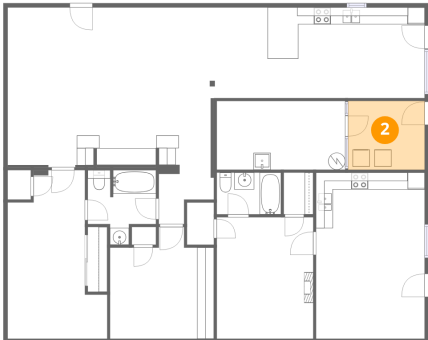
1 Floor 1 - Bath



Max Dimensions: 8'0" x 8'9"
Calculated Area: 55 sq. ft
Included: Yes

Heated: Yes
Finished: Yes
Enclosed: Yes
Contiguous: Yes
Permitted: Yes
Wet space: Yes
Addition: No
Conversion: No

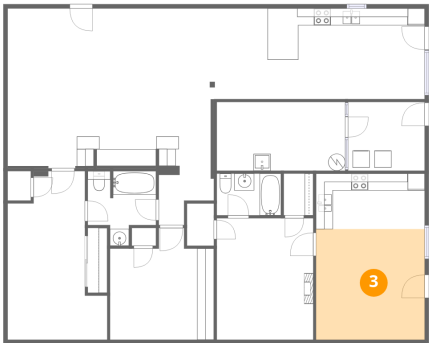
2 Floor 1 - Laundry



Max Dimensions: 9'0" x 8'1"
Calculated Area: 73 sq. ft
Included: No

Heated: Yes
Finished: Yes
Enclosed: Yes
Contiguous: No
Permitted: Yes
Wet space: No
Addition: No
Conversion: No

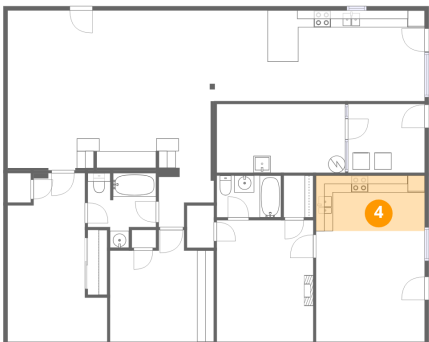
3 Floor 1 - Sitting Room



Max Dimensions: 12'10" x 13'0"
Calculated Area: 167 sq. ft
Included: Yes

Heated: Yes
Finished: Yes
Enclosed: Yes
Contiguous: Yes
Permitted: Yes
Wet space: No
Addition: No
Conversion: No

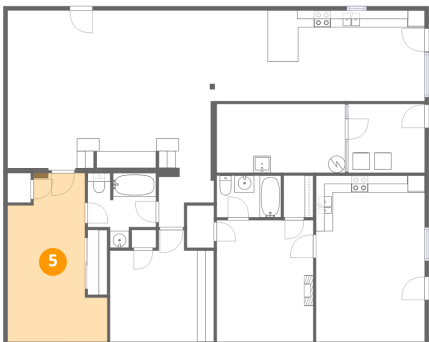
4 Floor 1 - Kitchen



Max Dimensions: 12'10" x 6'6"
Calculated Area: 84 sq. ft
Included: Yes

Heated: Yes
Finished: Yes
Enclosed: Yes
Contiguous: Yes
Permitted: Yes
Wet space: No
Addition: No
Conversion: No

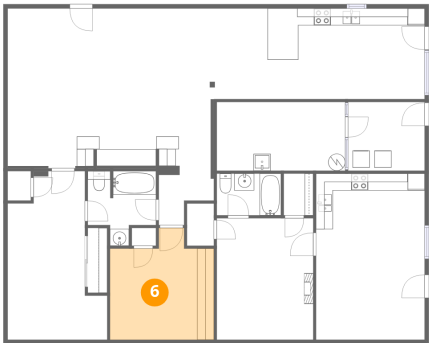
5 Floor 1 - Primary Bedroom



Max Dimensions: 11'9" x 19'10"
Calculated Area: 183 sq. ft
Included: Yes

Heated: Yes
Finished: Yes
Enclosed: Yes
Contiguous: Yes
Permitted: Yes
Wet space: No
Addition: No
Conversion: No

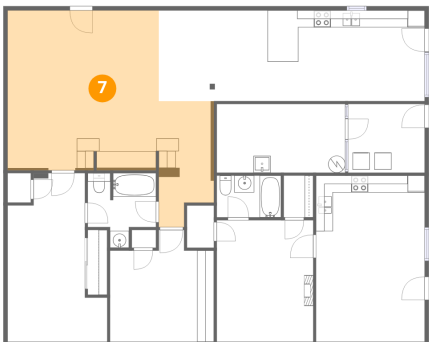
6 Floor 1 - Bedroom



Max Dimensions: 12'3" x 13'2"
Calculated Area: 139 sq. ft
Included: Yes

Heated: Yes
Finished: Yes
Enclosed: Yes
Contiguous: Yes
Permitted: Yes
Wet space: No
Addition: No
Conversion: No

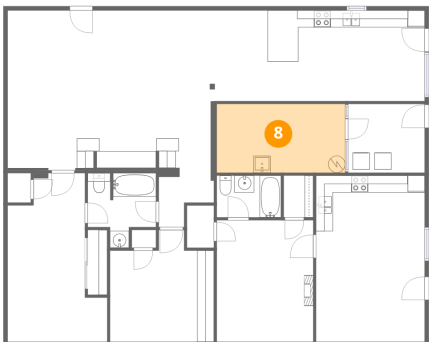
7 Floor 1 - Recreation Room



Max Dimensions: 23'11" x 18'10"
Calculated Area: 420 sq. ft
Included: Yes

Heated: Yes
Finished: Yes
Enclosed: Yes
Contiguous: Yes
Permitted: Yes
Wet space: No
Addition: No
Conversion: No

8 Floor 1 - Utility



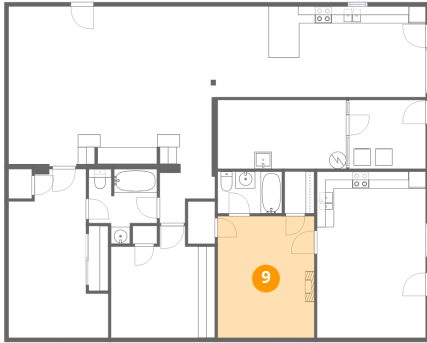
Max Dimensions: 15'2" x 8'1"
Calculated Area: 123 sq. ft
Included: No

Heated: Yes
Finished: No
Enclosed: Yes
Contiguous: Yes
Permitted: Yes
Wet space: No
Addition: No
Conversion: No

Home report

326 Lower Clubhouse Drive, Shannondale, Harpers Ferry,
Jefferson County, West Virginia, United States, 25425

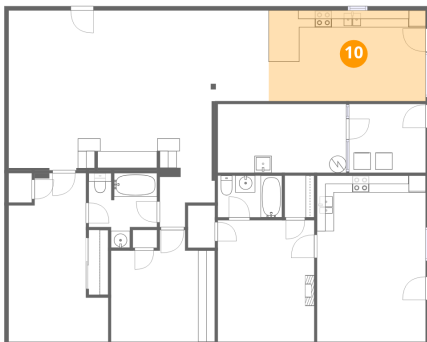
9 Floor 1 - Bedroom



Max Dimensions: 11'4" x 14'4"
Calculated Area: 163 sq. ft
Included: Yes

Heated: Yes
Finished: Yes
Enclosed: Yes
Contiguous: Yes
Permitted: Yes
Wet space: No
Addition: No
Conversion: No

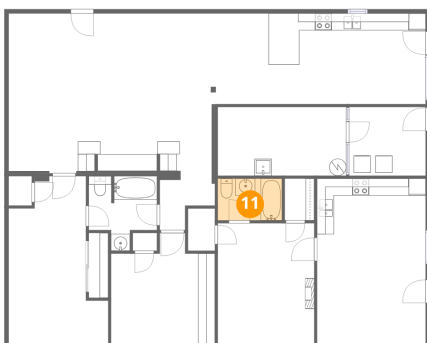
10 Floor 1 - Kitchen



Max Dimensions: 18'6" x 10'8"
Calculated Area: 197 sq. ft
Included: Yes

Heated: Yes
Finished: Yes
Enclosed: Yes
Contiguous: Yes
Permitted: Yes
Wet space: No
Addition: No
Conversion: No

11 Floor 1 - Bath



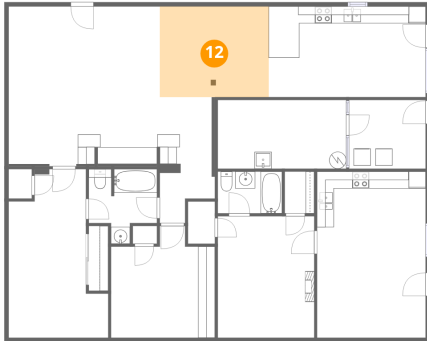
Max Dimensions: 7'7" x 4'11"
Calculated Area: 37 sq. ft
Included: Yes

Heated: Yes
Finished: Yes
Enclosed: Yes
Contiguous: Yes
Permitted: Yes
Wet space: Yes
Addition: No
Conversion: No

Home report

326 Lower Clubhouse Drive, Shannondale, Harpers Ferry,
Jefferson County, West Virginia, United States, 25425

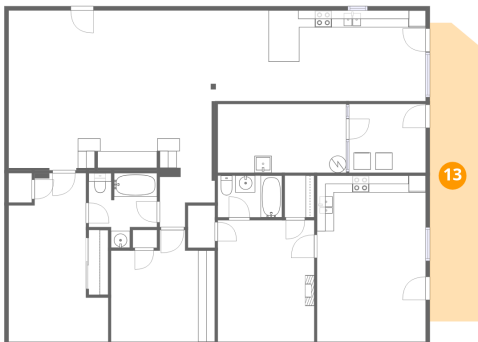
12 Floor 1 - Dining Area



Max Dimensions: 12'10" x 10'8"
Calculated Area: 137 sq. ft
Included: Yes

Heated: Yes
Finished: Yes
Enclosed: Yes
Contiguous: Yes
Permitted: Yes
Wet space: No
Addition: No
Conversion: No

13 Floor 1 - Patio



Max Dimensions: 6'1" x 35'2"
Calculated Area: 209 sq. ft
Included: No

Heated: No
Finished: No
Enclosed: No
Contiguous: Yes
Permitted: Yes
Wet space: No
Addition: No
Conversion: No

14 Floor 2 - Living Room

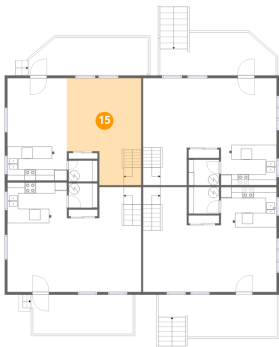


Max Dimensions: 14'3" x 19'6"
Calculated Area: 235 sq. ft
Included: Yes

Heated: Yes
Finished: Yes
Enclosed: Yes
Contiguous: Yes
Permitted: Yes
Wet space: No
Addition: No
Conversion: No

326 Lower Clubhouse Drive, Shannondale, Harpers Ferry,
Jefferson County, West Virginia, United States, 25425

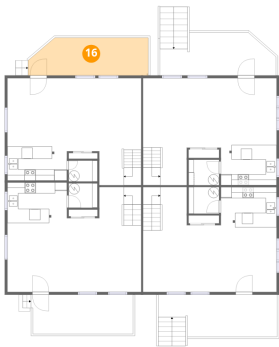
15 Floor 2 - Living Room



Max Dimensions: 13'7" x 19'6"
Calculated Area: 228 sq. ft
Included: Yes

Heated: Yes
Finished: Yes
Enclosed: Yes
Contiguous: Yes
Permitted: Yes
Wet space: No
Addition: No
Conversion: No

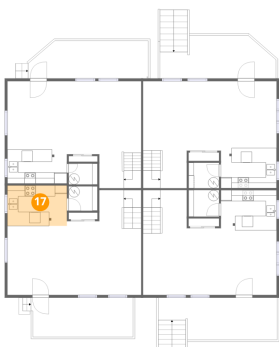
16 Floor 2 - Porch



Max Dimensions: 21'11" x 6'10"
Calculated Area: 141 sq. ft
Included: No

Heated: No
Finished: No
Enclosed: No
Contiguous: Yes
Permitted: Yes
Wet space: No
Addition: No
Conversion: No

17 Floor 2 - Kitchen



Max Dimensions: 10'10" x 7'5"
Calculated Area: 80 sq. ft
Included: Yes

Heated: Yes
Finished: Yes
Enclosed: Yes
Contiguous: Yes
Permitted: Yes
Wet space: No
Addition: No
Conversion: No

326 Lower Clubhouse Drive, Shannondale, Harpers Ferry,
Jefferson County, West Virginia, United States, 25425

18 Floor 2 - Dining Area



Max Dimensions: 10'10" x 12'5"
Calculated Area: 135 sq. ft
Included: Yes

Heated: Yes
Finished: Yes
Enclosed: Yes
Contiguous: Yes
Permitted: Yes
Wet space: No
Addition: No
Conversion: No

19 Floor 2 - Kitchen



Max Dimensions: 10'2" x 7'4"
Calculated Area: 75 sq. ft
Included: Yes

Heated: Yes
Finished: Yes
Enclosed: Yes
Contiguous: Yes
Permitted: Yes
Wet space: No
Addition: No
Conversion: No

20 Floor 2 - Porch



Max Dimensions: 21'2" x 7'10"
Calculated Area: 138 sq. ft
Included: No

Heated: No
Finished: No
Enclosed: No
Contiguous: Yes
Permitted: Yes
Wet space: No
Addition: No
Conversion: No

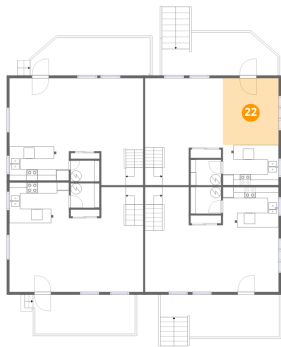
21 Floor 2 - Utility



Max Dimensions: 5'7" x 4'10"
Calculated Area: 27 sq. ft
Included: No

Heated: Yes
Finished: No
Enclosed: Yes
Contiguous: Yes
Permitted: Yes
Wet space: No
Addition: No
Conversion: No

22 Floor 2 - Dining Area



Max Dimensions: 10'2" x 12'2"
Calculated Area: 124 sq. ft
Included: Yes

Heated: Yes
Finished: Yes
Enclosed: Yes
Contiguous: Yes
Permitted: Yes
Wet space: No
Addition: No
Conversion: No

23 Floor 2 - Kitchen



Max Dimensions: 10'10" x 6'3"
Calculated Area: 68 sq. ft
Included: Yes

Heated: Yes
Finished: Yes
Enclosed: Yes
Contiguous: Yes
Permitted: Yes
Wet space: No
Addition: No
Conversion: No

326 Lower Clubhouse Drive, Shannondale, Harpers Ferry,
Jefferson County, West Virginia, United States, 25425

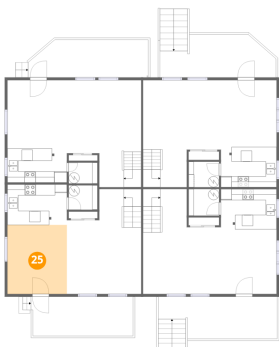
24 Floor 2 - Utility



Max Dimensions: 5'3" x 3'10"
Calculated Area: 20 sq. ft
Included: No

Heated: Yes
Finished: No
Enclosed: Yes
Contiguous: Yes
Permitted: Yes
Wet space: No
Addition: No
Conversion: No

25 Floor 2 - Dining Area



Max Dimensions: 10'10" x 12'7"
Calculated Area: 137 sq. ft
Included: Yes

Heated: Yes
Finished: Yes
Enclosed: Yes
Contiguous: Yes
Permitted: Yes
Wet space: No
Addition: No
Conversion: No

26 Floor 2 - Utility



Max Dimensions: 5'3" x 4'6"
Calculated Area: 23 sq. ft
Included: No

Heated: Yes
Finished: No
Enclosed: Yes
Contiguous: Yes
Permitted: Yes
Wet space: No
Addition: No
Conversion: No

326 Lower Clubhouse Drive, Shannondale, Harpers Ferry,
Jefferson County, West Virginia, United States, 25425

27 Floor 2 - Dining Area



Max Dimensions: 10'2" x 11'10"
Calculated Area: 120 sq. ft
Included: Yes

Heated: Yes
Finished: Yes
Enclosed: Yes
Contiguous: Yes
Permitted: Yes
Wet space: No
Addition: No
Conversion: No

28 Floor 2 - Utility



Max Dimensions: 5'7" x 4'8"
Calculated Area: 26 sq. ft
Included: No

Heated: Yes
Finished: No
Enclosed: Yes
Contiguous: Yes
Permitted: Yes
Wet space: No
Addition: No
Conversion: No

29 Floor 2 - Living Room



Max Dimensions: 14'3" x 19'2"
Calculated Area: 229 sq. ft
Included: Yes

Heated: Yes
Finished: Yes
Enclosed: Yes
Contiguous: Yes
Permitted: Yes
Wet space: No
Addition: No
Conversion: No

326 Lower Clubhouse Drive, Shannondale, Harpers Ferry,
Jefferson County, West Virginia, United States, 25425

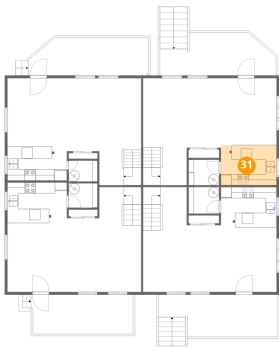
30 Floor 2 - Porch



Max Dimensions: 21'9" x 7'8"
Calculated Area: 148 sq. ft
Included: No

Heated: No
Finished: No
Enclosed: No
Contiguous: Yes
Permitted: Yes
Wet space: No
Addition: No
Conversion: No

31 Floor 2 - Kitchen



Max Dimensions: 10'2" x 7'4"
Calculated Area: 75 sq. ft
Included: Yes

Heated: Yes
Finished: Yes
Enclosed: Yes
Contiguous: Yes
Permitted: Yes
Wet space: No
Addition: No
Conversion: No

32 Floor 2 - Living Room



Max Dimensions: 13'7" x 19'2"
Calculated Area: 226 sq. ft
Included: Yes

Heated: Yes
Finished: Yes
Enclosed: Yes
Contiguous: Yes
Permitted: Yes
Wet space: No
Addition: No
Conversion: No

326 Lower Clubhouse Drive, Shannondale, Harpers Ferry,
Jefferson County, West Virginia, United States, 25425

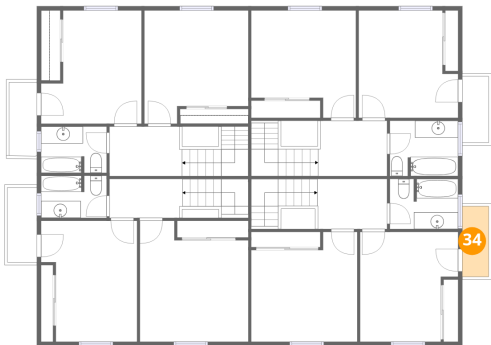
33 Floor 2 - Porch



Max Dimensions: 18'8" x 7'2"
Calculated Area: 132 sq. ft
Included: No

Heated: No
Finished: No
Enclosed: No
Contiguous: Yes
Permitted: Yes
Wet space: No
Addition: No
Conversion: No

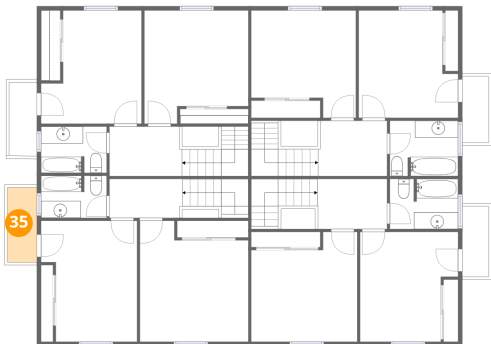
34 Floor 3 - Balcony



Max Dimensions: 3'1" x 8'4"
Calculated Area: 26 sq. ft
Included: No

Heated: No
Finished: No
Enclosed: No
Contiguous: Yes
Permitted: Yes
Wet space: No
Addition: No
Conversion: No

35 Floor 3 - Balcony

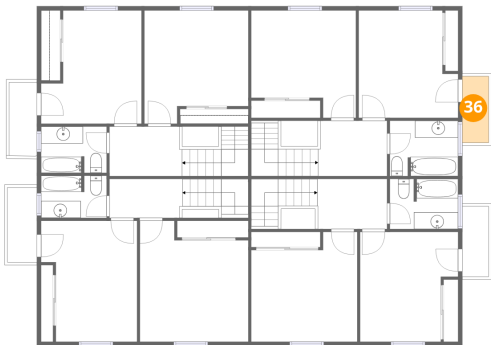


Max Dimensions: 3'6" x 8'10"
Calculated Area: 31 sq. ft
Included: No

Heated: No
Finished: No
Enclosed: No
Contiguous: Yes
Permitted: Yes
Wet space: No
Addition: No
Conversion: No

326 Lower Clubhouse Drive, Shannondale, Harpers Ferry,
Jefferson County, West Virginia, United States, 25425

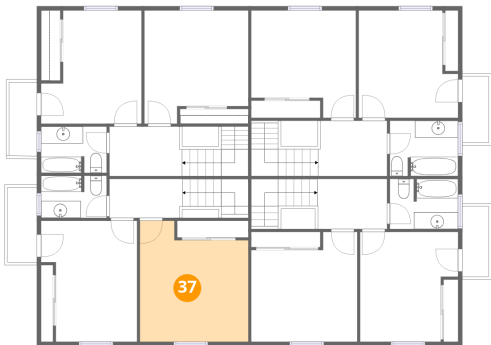
36 Floor 3 - Balcony



Max Dimensions: 3'1" x 7'10"
Calculated Area: 24 sq. ft
Included: No

Heated: No
Finished: No
Enclosed: No
Contiguous: Yes
Permitted: Yes
Wet space: No
Addition: No
Conversion: No

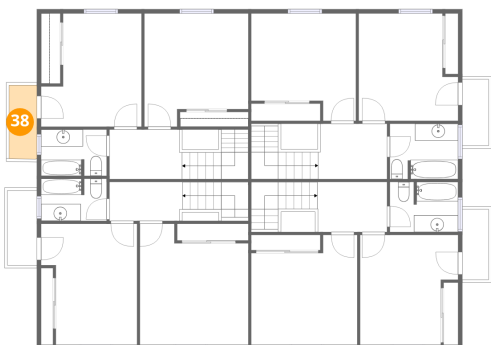
37 Floor 3 - Bedroom



Max Dimensions: 12'9" x 14'3"
Calculated Area: 162 sq. ft
Included: Yes

Heated: Yes
Finished: Yes
Enclosed: Yes
Contiguous: Yes
Permitted: Yes
Wet space: No
Addition: No
Conversion: No

38 Floor 3 - Balcony

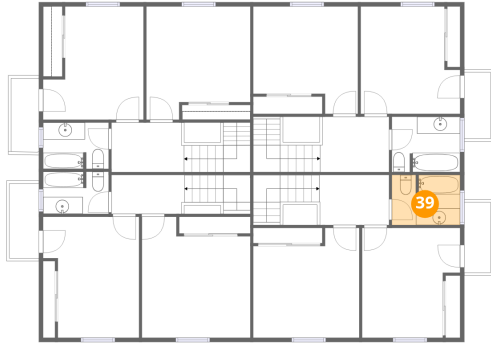


Max Dimensions: 3'3" x 8'8"
Calculated Area: 28 sq. ft
Included: No

Heated: No
Finished: No
Enclosed: No
Contiguous: Yes
Permitted: Yes
Wet space: No
Addition: No
Conversion: No

326 Lower Clubhouse Drive, Shannondale, Harpers Ferry,
Jefferson County, West Virginia, United States, 25425

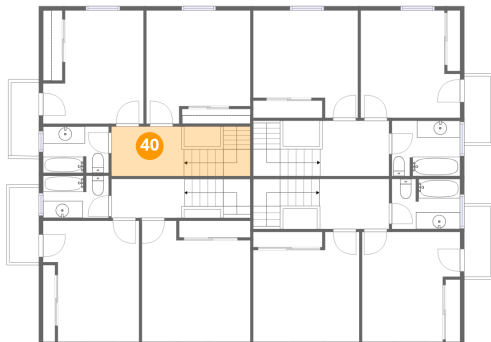
39 Floor 3 - Bath



Max Dimensions: 8'0" x 5'11"
Calculated Area: 47 sq. ft
Included: Yes

Heated: Yes
Finished: Yes
Enclosed: Yes
Contiguous: Yes
Permitted: Yes
Wet space: Yes
Addition: No
Conversion: No

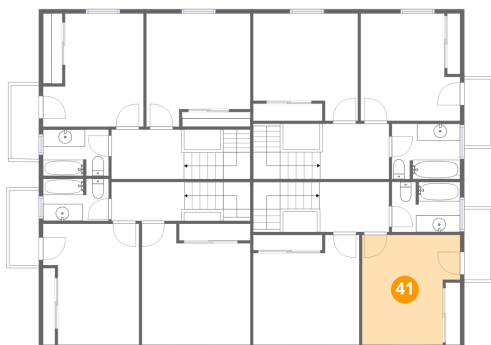
40 Floor 3 - Hall



Max Dimensions: 8'7" x 5'10"
Calculated Area: 95 sq. ft
Included: Yes

Heated: Yes
Finished: Yes
Enclosed: Yes
Contiguous: Yes
Permitted: Yes
Wet space: No
Addition: No
Conversion: No

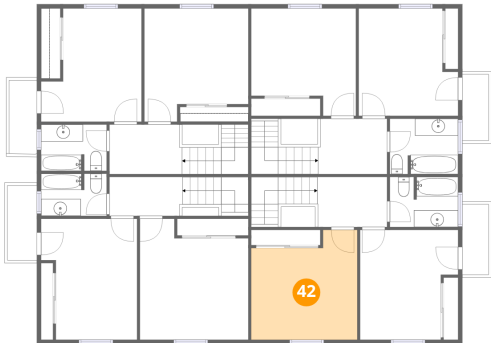
41 Floor 3 - Bedroom



Max Dimensions: 11'7" x 12'11"
Calculated Area: 134 sq. ft
Included: Yes

Heated: Yes
Finished: Yes
Enclosed: Yes
Contiguous: Yes
Permitted: Yes
Wet space: No
Addition: No
Conversion: No

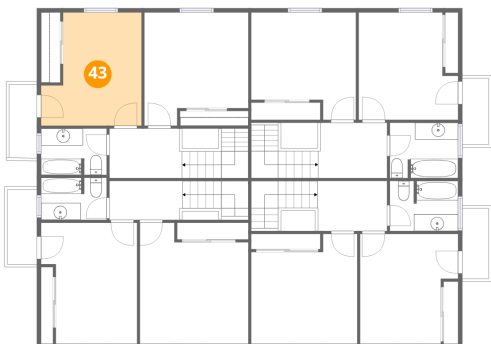
42 Floor 3 - Bedroom



Max Dimensions: 12'6" x 12'11"
Calculated Area: 144 sq. ft
Included: Yes

Heated: Yes
Finished: Yes
Enclosed: Yes
Contiguous: Yes
Permitted: Yes
Wet space: No
Addition: No
Conversion: No

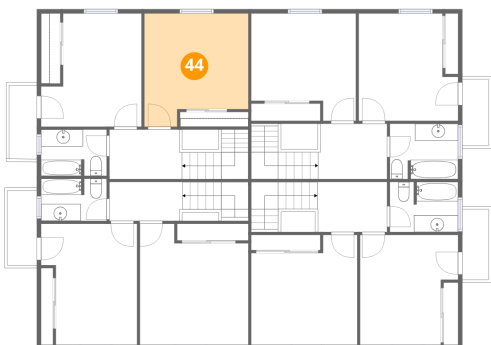
43 Floor 3 - Bedroom



Max Dimensions: 11'10" x 13'4"
Calculated Area: 136 sq. ft
Included: Yes

Heated: Yes
Finished: Yes
Enclosed: Yes
Contiguous: Yes
Permitted: Yes
Wet space: No
Addition: No
Conversion: No

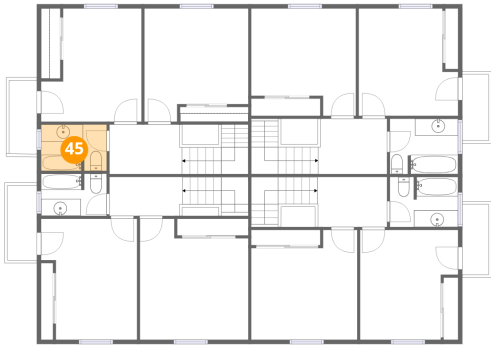
44 Floor 3 - Bedroom



Max Dimensions: 12'3" x 13'4"
Calculated Area: 146 sq. ft
Included: Yes

Heated: Yes
Finished: Yes
Enclosed: Yes
Contiguous: Yes
Permitted: Yes
Wet space: No
Addition: No
Conversion: No

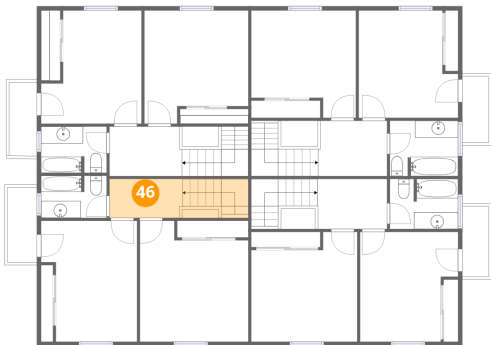
45 Floor 3 - Bath



Max Dimensions: 7'9" x 5'5"
Calculated Area: 41 sq. ft
Included: Yes

Heated: Yes
Finished: Yes
Enclosed: Yes
Contiguous: Yes
Permitted: Yes
Wet space: Yes
Addition: No
Conversion: No

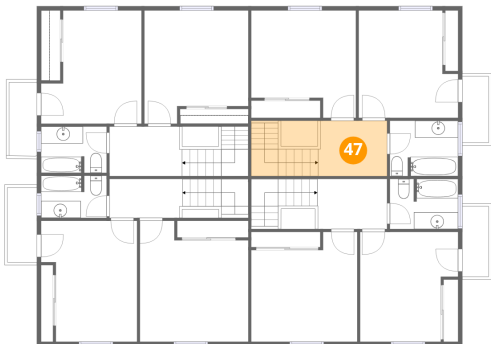
46 Floor 3 - Hall



Max Dimensions: 8'7" x 4'7"
Calculated Area: 75 sq. ft
Included: Yes

Heated: Yes
Finished: Yes
Enclosed: Yes
Contiguous: Yes
Permitted: Yes
Wet space: No
Addition: No
Conversion: No

47 Floor 3 - Hall



Max Dimensions: 8'1" x 6'6"
Calculated Area: 104 sq. ft
Included: Yes

Heated: Yes
Finished: Yes
Enclosed: Yes
Contiguous: Yes
Permitted: Yes
Wet space: No
Addition: No
Conversion: No

326 Lower Clubhouse Drive, Shannondale, Harpers Ferry,
Jefferson County, West Virginia, United States, 25425

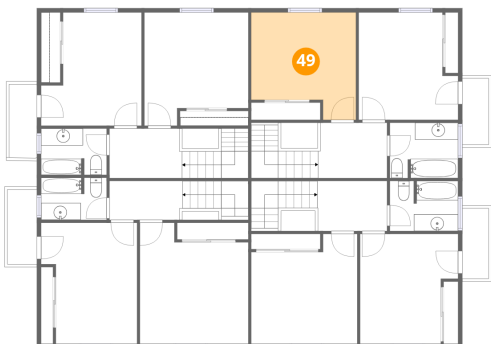
48 Floor 3 - Bath



Max Dimensions: 7'9" x 5'0"
Calculated Area: 38 sq. ft
Included: Yes

Heated: Yes
Finished: Yes
Enclosed: Yes
Contiguous: Yes
Permitted: Yes
Wet space: Yes
Addition: No
Conversion: No

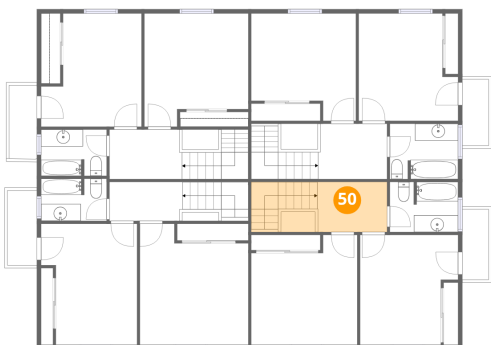
49 Floor 3 - Bedroom



Max Dimensions: 12'4" x 12'8"
Calculated Area: 136 sq. ft
Included: Yes

Heated: Yes
Finished: Yes
Enclosed: Yes
Contiguous: Yes
Permitted: Yes
Wet space: No
Addition: No
Conversion: No

50 Floor 3 - Hall

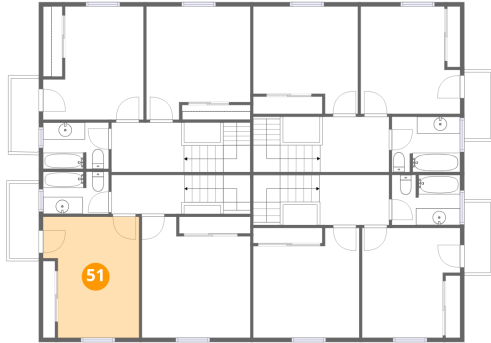


Max Dimensions: 8'2" x 5'11"
Calculated Area: 94 sq. ft
Included: Yes

Heated: Yes
Finished: Yes
Enclosed: Yes
Contiguous: Yes
Permitted: Yes
Wet space: No
Addition: No
Conversion: No

326 Lower Clubhouse Drive, Shannondale, Harpers Ferry,
Jefferson County, West Virginia, United States, 25425

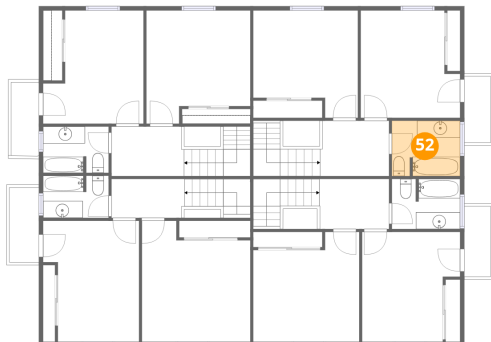
51 Floor 3 - Bedroom



Max Dimensions: 11'4" x 14'3"
Calculated Area: 145 sq. ft
Included: Yes

Heated: Yes
Finished: Yes
Enclosed: Yes
Contiguous: Yes
Permitted: Yes
Wet space: No
Addition: No
Conversion: No

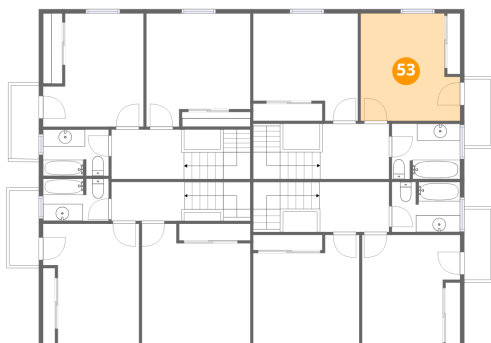
52 Floor 3 - Bath



Max Dimensions: 8'0" x 6'6"
Calculated Area: 52 sq. ft
Included: Yes

Heated: Yes
Finished: Yes
Enclosed: Yes
Contiguous: Yes
Permitted: Yes
Wet space: Yes
Addition: No
Conversion: No

53 Floor 3 - Bedroom



Max Dimensions: 11'9" x 12'8"
Calculated Area: 134 sq. ft
Included: Yes

Heated: Yes
Finished: Yes
Enclosed: Yes
Contiguous: Yes
Permitted: Yes
Wet space: No
Addition: No
Conversion: No