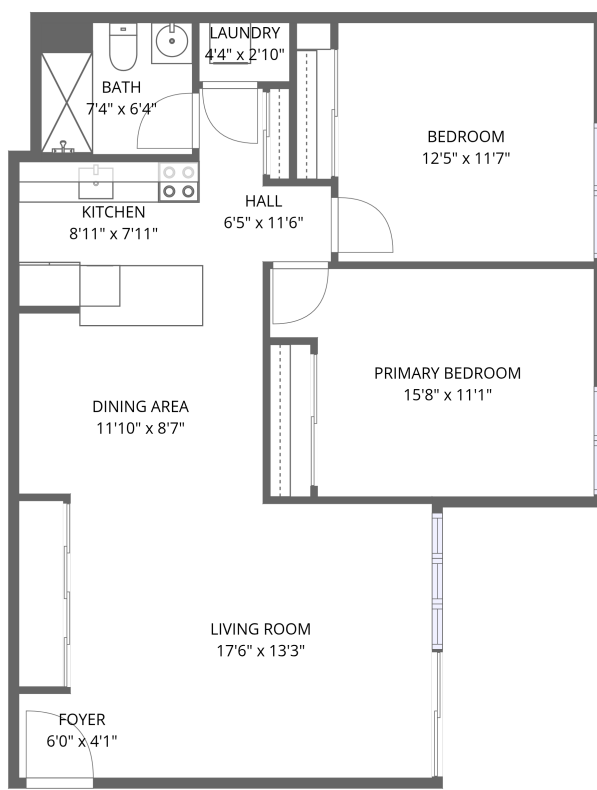


Home data report

400 Narragansett Parkway, Warwick, Kent County, Rhode Island, United States, 02888, SC-7



1st floor

Total Area: 905 sq. ft

1st Floor: 905 sq. ft

Excluded: Walls: 0 sq. ft

Property summary

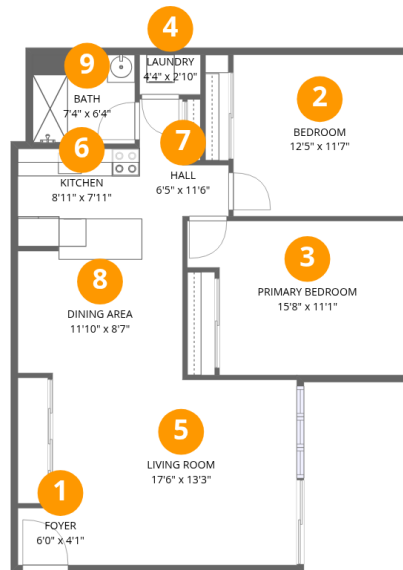
 **1** Floors

 **2** Bedrooms

 **1** Bathrooms

Home data report

400 Narragansett Parkway, Warwick, Kent County, Rhode Island, United States, 02888, SC-7



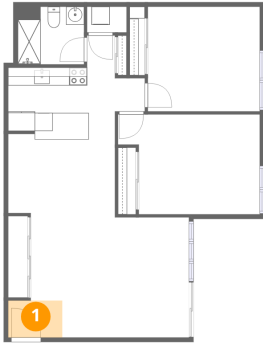
Room dimensions

Floor 1

Total:905sqft Excluded: 0sqft

#		Dimensions	sqft	Counted as living area
1	Foyer	6'0" x 4'1"	24 sq. ft	Yes
2	Bedroom	12'5" x 11'7"	143 sq. ft	Yes
3	Primary Bedroom	15'8" x 11'1"	156 sq. ft	Yes
4	Laundry	4'4" x 2'10"	12 sq. ft	Yes
5	Living Room	17'6" x 13'3"	218 sq. ft	Yes
6	Kitchen	8'11" x 7'11"	67 sq. ft	Yes
7	Hall	6'5" x 11'6"	47 sq. ft	Yes
8	Dining Area	11'10" x 8'7"	103 sq. ft	Yes
9	Bath	7'4" x 6'4"	47 sq. ft	Yes

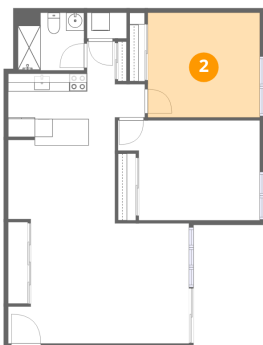
1 Floor 1 - Foyer



Dimensions: 6'0" x 4'1"
Area: 24 sq. ft
Counted as living area: Yes

Heated: Yes
Finished: Yes
Enclosed: Yes
Contiguous: Yes
Permitted: Yes
Wet space: No
Addition: No
Conversion: No

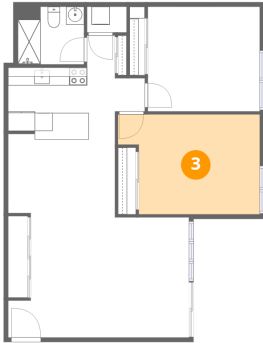
2 Floor 1 - Bedroom



Dimensions: 12'5" x 11'7"
Area: 143 sq. ft
Counted as living area: Yes

Heated: Yes
Finished: Yes
Enclosed: Yes
Contiguous: Yes
Permitted: Yes
Wet space: No
Addition: No
Conversion: No

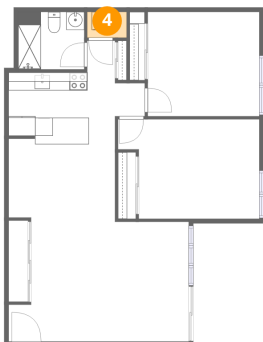
3 Floor 1 - Primary Bedroom



Dimensions: 15'8" x 11'1"
Area: 156 sq. ft
Counted as living area: Yes

Heated: Yes
Finished: Yes
Enclosed: Yes
Contiguous: Yes
Permitted: Yes
Wet space: No
Addition: No
Conversion: No

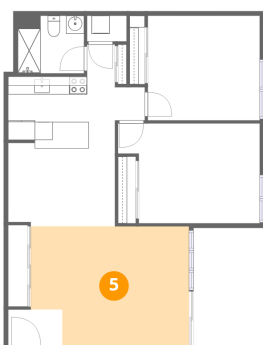
4 Floor 1 - Laundry



Dimensions: 4'4" x 2'10"
Area: 12 sq. ft
Counted as living area: Yes

Heated: Yes
Finished: Yes
Enclosed: Yes
Contiguous: Yes
Permitted: Yes
Wet space: No
Addition: No
Conversion: No

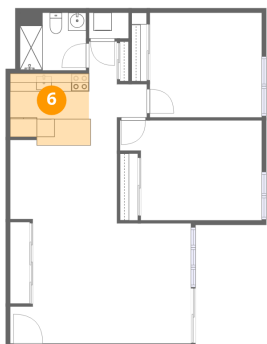
5 Floor 1 - Living Room



Dimensions: 17'6" x 13'3"
Area: 218 sq. ft
Counted as living area: Yes

Heated: Yes
Finished: Yes
Enclosed: Yes
Contiguous: Yes
Permitted: Yes
Wet space: No
Addition: No
Conversion: No

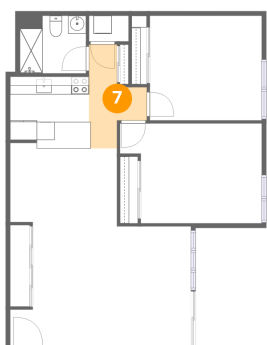
6 Floor 1 - Kitchen



Dimensions: 8'11" x 7'11"
Area: 67 sq. ft
Counted as living area: Yes

Heated: Yes
Finished: Yes
Enclosed: Yes
Contiguous: Yes
Permitted: Yes
Wet space: No
Addition: No
Conversion: No

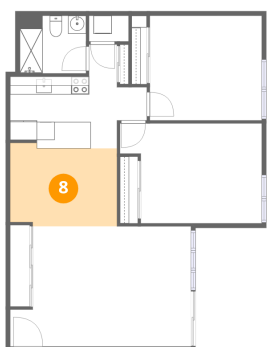
7 Floor 1 - Hall



Dimensions: 6'5" x 11'6"
Area: 47 sq. ft
Counted as living area: Yes

Heated: Yes
Finished: Yes
Enclosed: Yes
Contiguous: Yes
Permitted: Yes
Wet space: No
Addition: No
Conversion: No

8 Floor 1 - Dining Area

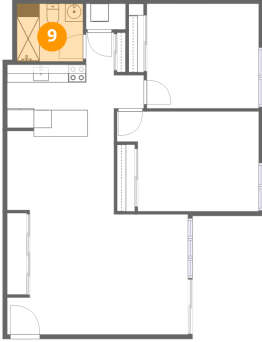


Dimensions: 11'10" x 8'7"
Area: 103 sq. ft
Counted as living area: Yes

Heated: Yes
Finished: Yes
Enclosed: Yes
Contiguous: Yes
Permitted: Yes
Wet space: No
Addition: No
Conversion: No

400 Narragansett Parkway, Warwick, Kent County, Rhode Island,
United States, 02888, SC-7

9 Floor 1 - Bath



Dimensions: 7'4" x 6'4"
Area: 47 sq. ft
Counted as living area: Yes

Heated: Yes
Finished: Yes
Enclosed: Yes
Contiguous: Yes
Permitted: Yes
Wet space: Yes
Addition: No
Conversion: No