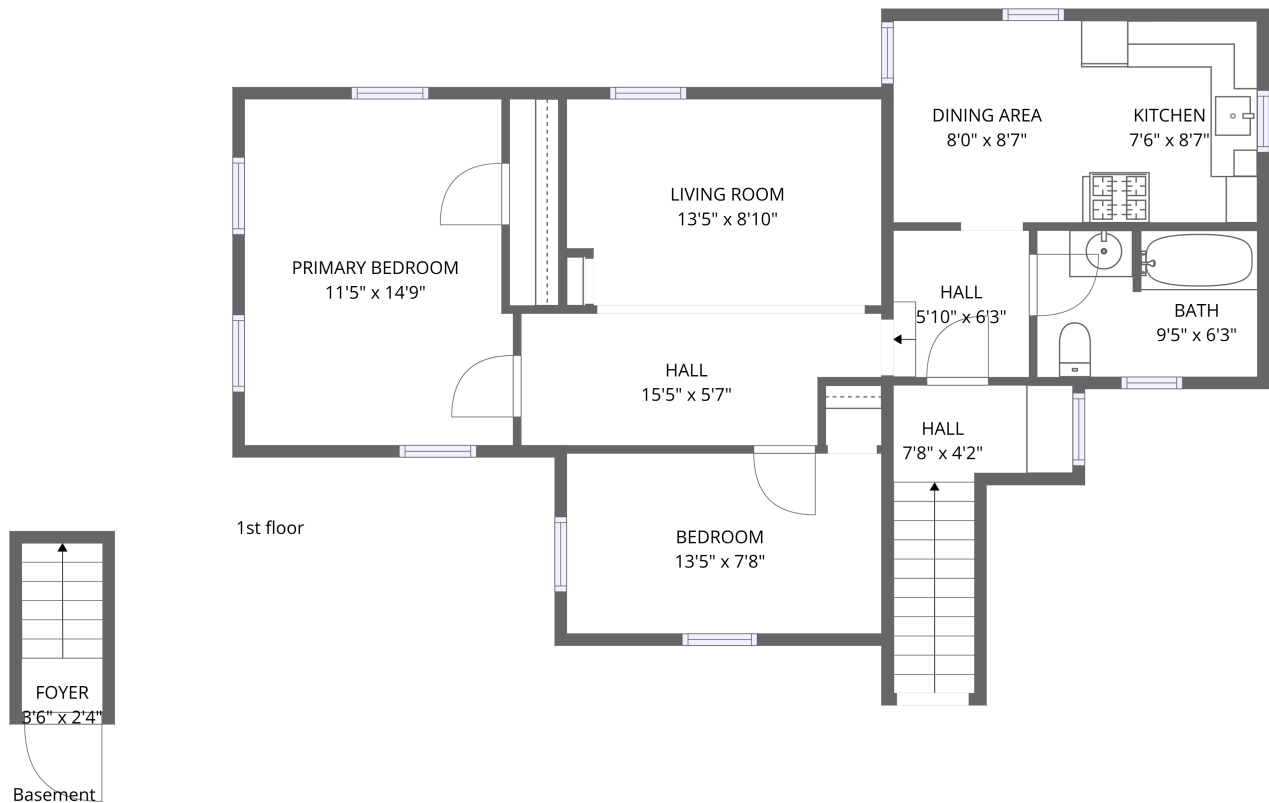


Home data report

531 Vienna Street, Palmyra, Wayne County, New York, United States, 14522, unit 2



Total Area: 847 sq. ft

Basement: 25 sq. ft, 1st Floor: 822 sq. ft

Excluded: Walls: 0 sq. ft

Property summary



Home data report

531 Vienna Street, Palmyra, Wayne County, New York, United States, 14522, unit 2



Room dimensions

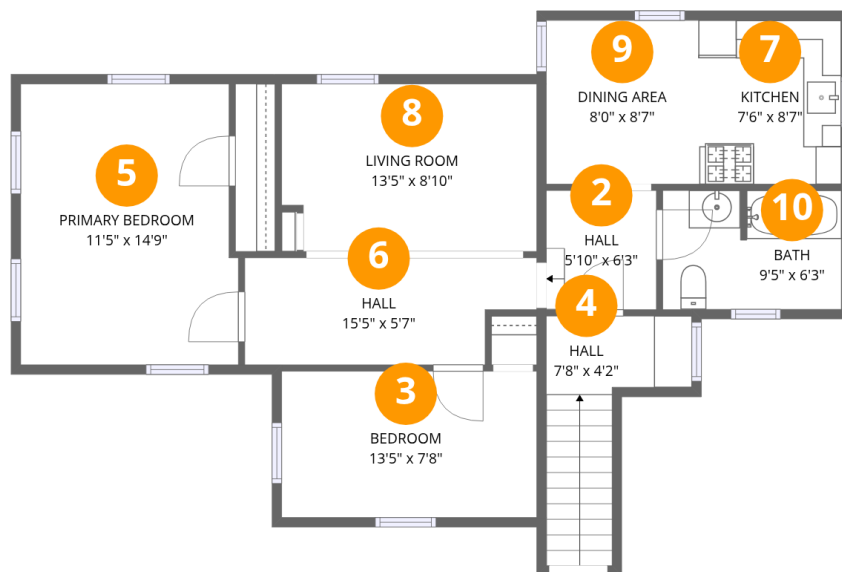
Floor 1 Below grade

Total:25sqft

Excluded: 0sqft

| # | | Dimensions | sqft | Counted as living area |
|---|-------|-------------|-----------|------------------------|
| 1 | Foyer | 3'6" x 2'4" | 25 sq. ft | Yes |

531 Vienna Street, Palmyra, Wayne County, New York, United States, 14522, unit 2



Room dimensions

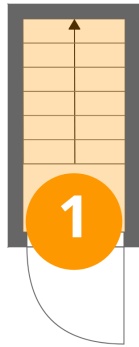
Floor 2

Total:822sqft Excluded: 0sqft

| # | | Dimensions | sqft | Counted as living area |
|----|-----------------|---------------|------------|------------------------|
| 2 | Hall | 5'10" x 6'3" | 36 sq. ft | Yes |
| 3 | Bedroom | 13'5" x 7'8" | 104 sq. ft | Yes |
| 4 | Hall | 7'8" x 4'2" | 61 sq. ft | Yes |
| 5 | Primary Bedroom | 11'5" x 14'9" | 165 sq. ft | Yes |
| 6 | Hall | 15'5" x 5'7" | 79 sq. ft | Yes |
| 7 | Kitchen | 7'6" x 8'7" | 65 sq. ft | Yes |
| 8 | Living Room | 13'5" x 8'10" | 116 sq. ft | Yes |
| 9 | Dining Area | 8'0" x 8'7" | 69 sq. ft | Yes |
| 10 | Bath | 9'5" x 6'3" | 58 sq. ft | Yes |

531 Vienna Street, Palmyra, Wayne County, New York, United States, 14522, unit 2

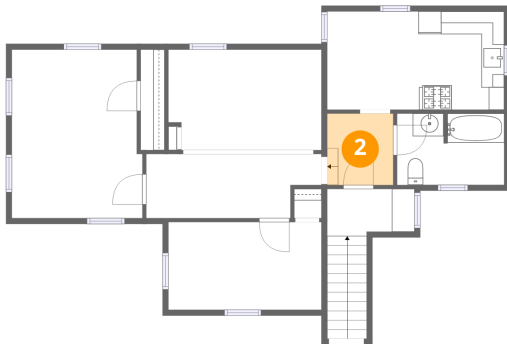
1 Floor 1 - Foyer



Dimensions: 3'6" x 2'4"
Area: 25 sq. ft
Counted as living area: Yes

Heated: Yes
Finished: Yes
Enclosed: Yes
Contiguous: Yes
Permitted: Yes
Wet space: No
Addition: No
Conversion: No

2 Floor 2 - Hall

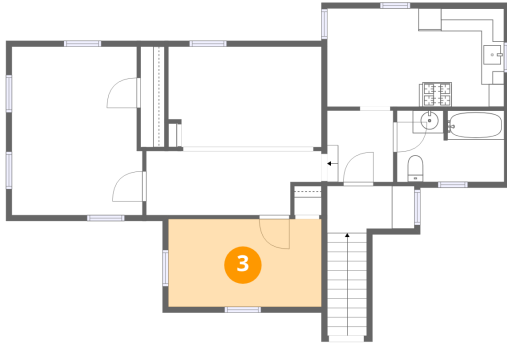


Dimensions: 5'10" x 6'3"
Area: 36 sq. ft
Counted as living area: Yes

Heated: Yes
Finished: Yes
Enclosed: Yes
Contiguous: Yes
Permitted: Yes
Wet space: No
Addition: No
Conversion: No

531 Vienna Street, Palmyra, Wayne County, New York, United States, 14522, unit 2

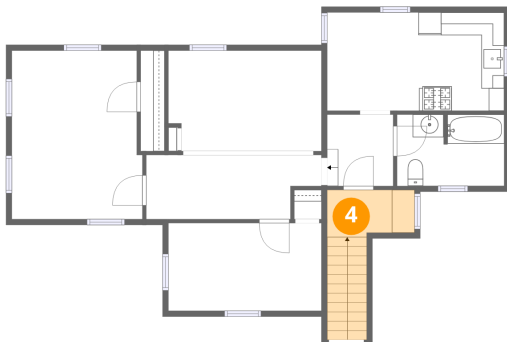
3 Floor 2 - Bedroom



Dimensions: 13'5" x 7'8"
Area: 104 sq. ft
Counted as living area: Yes

Heated: Yes
Finished: Yes
Enclosed: Yes
Contiguous: Yes
Permitted: Yes
Wet space: No
Addition: No
Conversion: No

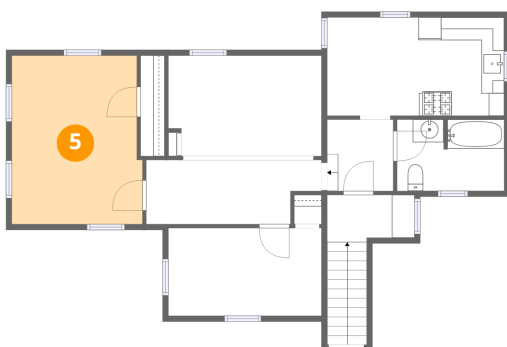
4 Floor 2 - Hall



Dimensions: 7'8" x 4'2"
Area: 61 sq. ft
Counted as living area: Yes

Heated: Yes
Finished: Yes
Enclosed: Yes
Contiguous: Yes
Permitted: Yes
Wet space: No
Addition: No
Conversion: No

5 Floor 2 - Primary Bedroom

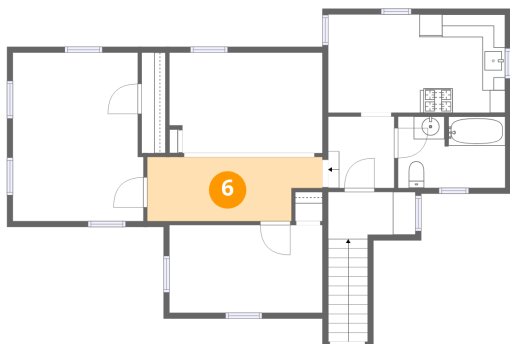


Dimensions: 11'5" x 14'9"
Area: 165 sq. ft
Counted as living area: Yes

Heated: Yes
Finished: Yes
Enclosed: Yes
Contiguous: Yes
Permitted: Yes
Wet space: No
Addition: No
Conversion: No

531 Vienna Street, Palmyra, Wayne County, New York, United States, 14522, unit 2

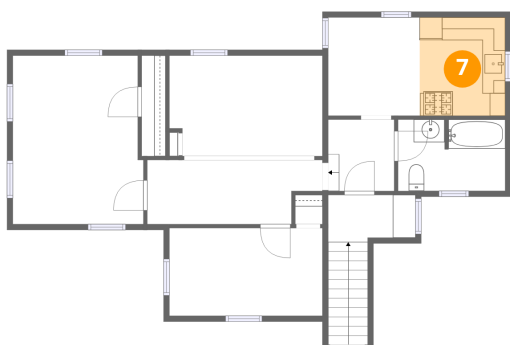
6 Floor 2 - Hall



Dimensions: 15'5" x 5'7"
Area: 79 sq. ft
Counted as living area: Yes

Heated: Yes
Finished: Yes
Enclosed: Yes
Contiguous: Yes
Permitted: Yes
Wet space: No
Addition: No
Conversion: No

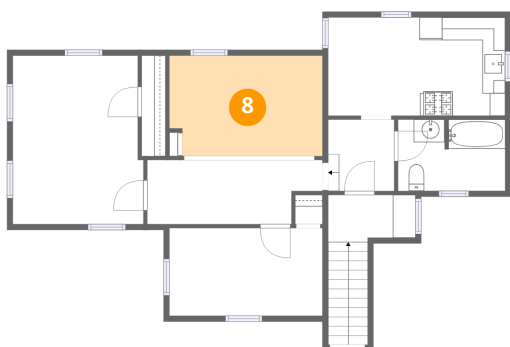
7 Floor 2 - Kitchen



Dimensions: 7'6" x 8'7"
Area: 65 sq. ft
Counted as living area: Yes

Heated: Yes
Finished: Yes
Enclosed: Yes
Contiguous: Yes
Permitted: Yes
Wet space: No
Addition: No
Conversion: No

8 Floor 2 - Living Room

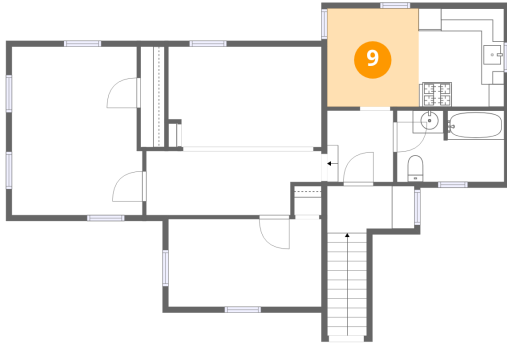


Dimensions: 13'5" x 8'10"
Area: 116 sq. ft
Counted as living area: Yes

Heated: Yes
Finished: Yes
Enclosed: Yes
Contiguous: Yes
Permitted: Yes
Wet space: No
Addition: No
Conversion: No

531 Vienna Street, Palmyra, Wayne County, New York, United States, 14522, unit 2

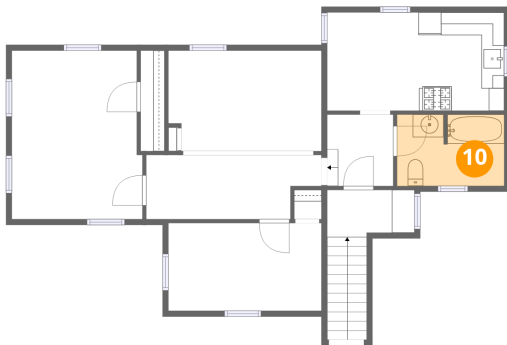
9 Floor 2 - Dining Area



Dimensions: 8'0" x 8'7"
Area: 69 sq. ft
Counted as living area: Yes

Heated: Yes
Finished: Yes
Enclosed: Yes
Contiguous: Yes
Permitted: Yes
Wet space: No
Addition: No
Conversion: No

10 Floor 2 - Bath



Dimensions: 9'5" x 6'3"
Area: 58 sq. ft
Counted as living area: Yes

Heated: Yes
Finished: Yes
Enclosed: Yes
Contiguous: Yes
Permitted: Yes
Wet space: Yes
Addition: No
Conversion: No