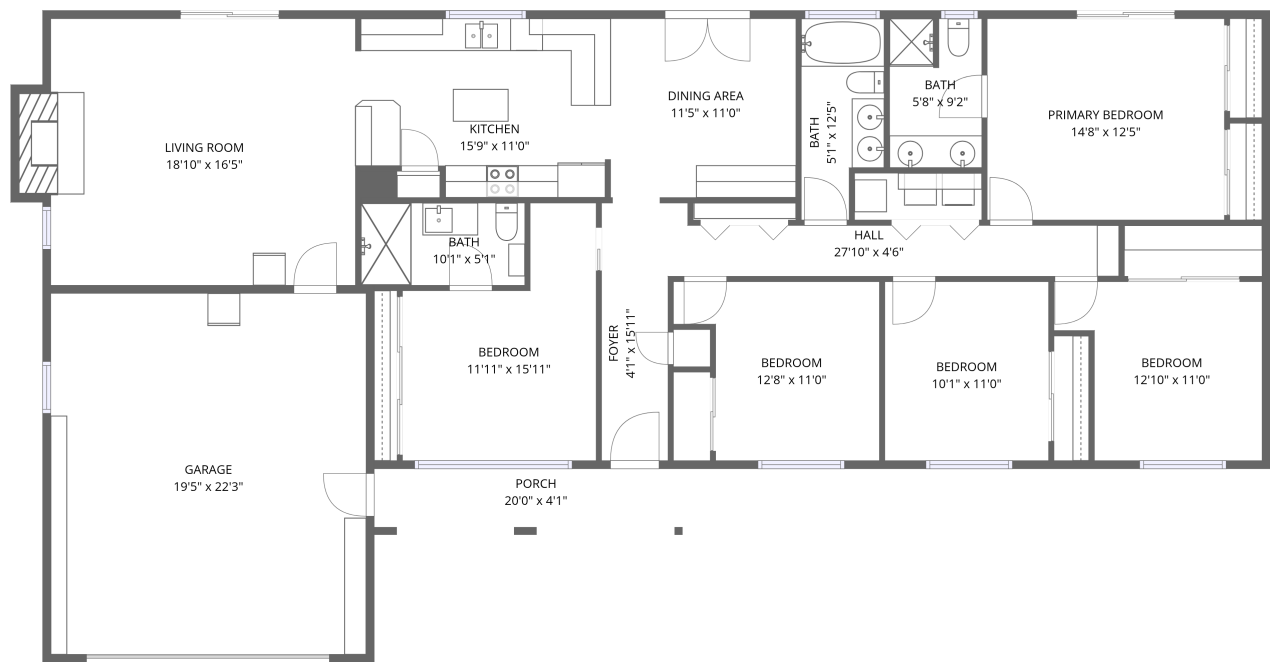


Home data report

1855 Nancy Ave,Central Point,OR,US



1st floor


Total Area: 1824 sq. ft

1st Floor: 1824 sq. ft

Excluded: Garage 433 sq. ft, Porch 82 sq. ft, Fireplace 14 sq. ft, Walls: 127 sq. ft

Property summary

 **1** Floors

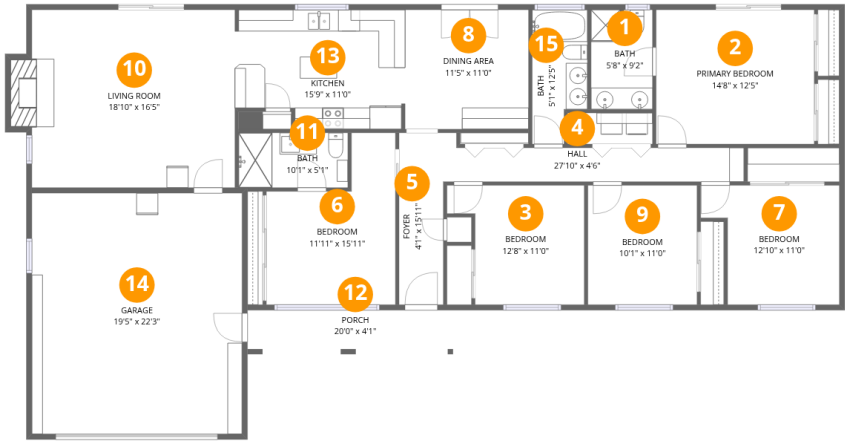
 **5** Bedrooms

 **3** Bathrooms

 **1** Garages

Home data report

1855 Nancy Ave,Central Point,OR,US



Room dimensions

Floor 1 Total:1824sqft Excluded: 529sqft

#		Dimensions	sqft	Counted as living area
1	Bath	5'8" x 9'2"	52 sq. ft	Yes
2	Primary Bedroom	14'8" x 12'5"	182 sq. ft	Yes
3	Bedroom	12'8" x 11'0"	140 sq. ft	Yes
4	Hall	27'10" x 4'6"	126 sq. ft	Yes
5	Foyer	4'1" x 15'11"	65 sq. ft	Yes
6	Bedroom	11'11" x 15'11"	190 sq. ft	Yes
7	Bedroom	12'10" x 11'0"	142 sq. ft	Yes
8	Dining Area	11'5" x 11'0"	126 sq. ft	Yes
9	Bedroom	10'1" x 11'0"	111 sq. ft	Yes
10	Living Room	18'10" x 16'5"	309 sq. ft	Yes
11	Bath	10'1" x 5'1"	51 sq. ft	Yes

Home data report

1855 Nancy Ave, Central Point, OR, US

#		Dimensions	sqft	Counted as living area
12	Porch	20'0" x 4'1"	82 sq. ft	No
13	Kitchen	15'9" x 11'0"	174 sq. ft	Yes
14	Garage	19'5" x 22'3"	433 sq. ft	No
15	Bath	5'1" x 12'5"	64 sq. ft	Yes

1 Floor 1 - Bath



Dimensions: 5'8" x 9'2"
Area: 52 sq. ft
Counted as living area: Yes

Heated: Yes
Finished: Yes
Enclosed: Yes
Contiguous: Yes
Permitted: Yes
Wet space: Yes
Addition: No
Conversion: No

2 Floor 1 - Primary Bedroom



Dimensions: 14'8" x 12'5"
Area: 182 sq. ft
Counted as living area: Yes

Heated: Yes
Finished: Yes
Enclosed: Yes
Contiguous: Yes
Permitted: Yes
Wet space: No
Addition: No
Conversion: No

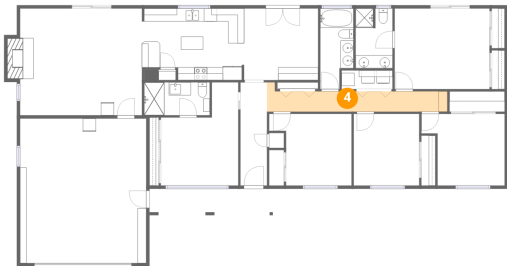
3 Floor 1 - Bedroom



Dimensions: 12'8" x 11'0"
Area: 140 sq. ft
Counted as living area: Yes

Heated: Yes
Finished: Yes
Enclosed: Yes
Contiguous: Yes
Permitted: Yes
Wet space: No
Addition: No
Conversion: No

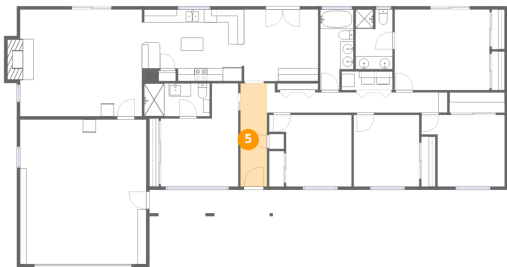
4 Floor 1 - Hall



Dimensions: 27'10" x 4'6"
Area: 126 sq. ft
Counted as living area: Yes

Heated: Yes
Finished: Yes
Enclosed: Yes
Contiguous: Yes
Permitted: Yes
Wet space: No
Addition: No
Conversion: No

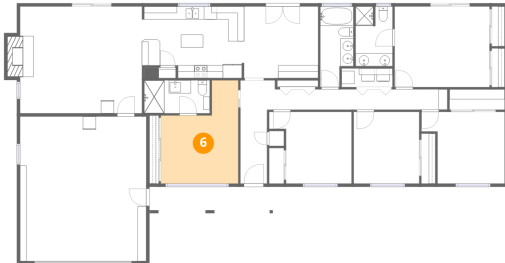
5 Floor 1 - Foyer



Dimensions: 4'1" x 15'11"
Area: 65 sq. ft
Counted as living area: Yes

Heated: Yes
Finished: Yes
Enclosed: Yes
Contiguous: Yes
Permitted: Yes
Wet space: No
Addition: No
Conversion: No

6 Floor 1 - Bedroom



Dimensions: 11'11" x 15'11"
Area: 190 sq. ft
Counted as living area: Yes

Heated: Yes
Finished: Yes
Enclosed: Yes
Contiguous: Yes
Permitted: Yes
Wet space: No
Addition: No
Conversion: No

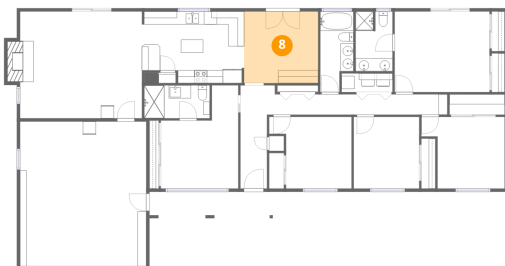
7 Floor 1 - Bedroom



Dimensions: 12'10" x 11'0"
Area: 142 sq. ft
Counted as living area: Yes

Heated: Yes
Finished: Yes
Enclosed: Yes
Contiguous: Yes
Permitted: Yes
Wet space: No
Addition: No
Conversion: No

8 Floor 1 - Dining Area



Dimensions: 11'5" x 11'0"
Area: 126 sq. ft
Counted as living area: Yes

Heated: Yes
Finished: Yes
Enclosed: Yes
Contiguous: Yes
Permitted: Yes
Wet space: No
Addition: No
Conversion: No

9 Floor 1 - Bedroom



Dimensions: 10'1" x 11'0"
Area: 111 sq. ft
Counted as living area: Yes

Heated: Yes
Finished: Yes
Enclosed: Yes
Contiguous: Yes
Permitted: Yes
Wet space: No
Addition: No
Conversion: No

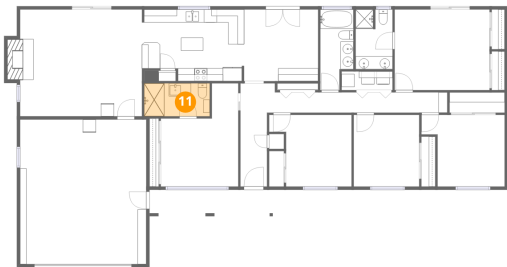
10 Floor 1 - Living Room



Dimensions: 18'10" x 16'5"
Area: 309 sq. ft
Counted as living area: Yes

Heated: Yes
Finished: Yes
Enclosed: Yes
Contiguous: Yes
Permitted: Yes
Wet space: No
Addition: No
Conversion: No

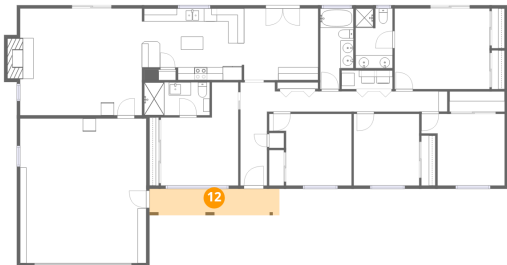
11 Floor 1 - Bath



Dimensions: 10'1" x 5'1"
Area: 51 sq. ft
Counted as living area: Yes

Heated: Yes
Finished: Yes
Enclosed: Yes
Contiguous: Yes
Permitted: Yes
Wet space: Yes
Addition: No
Conversion: No

12 Floor 1 - Porch



Dimensions: 20'0" x 4'1"
Area: 82 sq. ft
Counted as living area: No

Heated: No
Finished: No
Enclosed: No
Contiguous: Yes
Permitted: Yes
Wet space: No
Addition: No
Conversion: No

13 Floor 1 - Kitchen



Dimensions: 15'9" x 11'0"
Area: 174 sq. ft
Counted as living area: Yes

Heated: Yes
Finished: Yes
Enclosed: Yes
Contiguous: Yes
Permitted: Yes
Wet space: No
Addition: No
Conversion: No

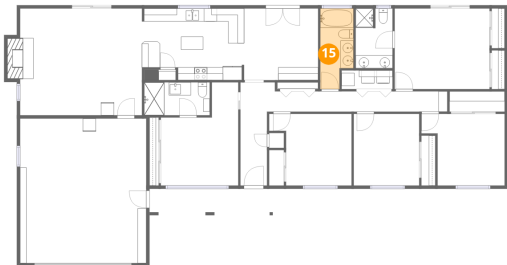
14 Floor 1 - Garage



Dimensions: 19'5" x 22'3"
Area: 433 sq. ft
Counted as living area: No

Heated: No
Finished: No
Enclosed: Yes
Contiguous: Yes
Permitted: Yes
Wet space: No
Addition: No
Conversion: No

15 Floor 1 - Bath



Dimensions: 5'1" x 12'5"
Area: 64 sq. ft
Counted as living area: Yes

Heated: Yes
Finished: Yes
Enclosed: Yes
Contiguous: Yes
Permitted: Yes
Wet space: Yes
Addition: No
Conversion: No