

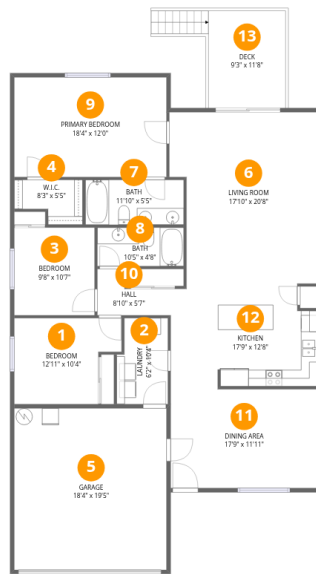
Total Area: 1539 sq. ft

1st Floor: 1539 sq. ft

Excluded: Garage 356 sq. ft, Deck 109 sq. ft, Walls: 112 sq. ft

Property summary





Room dimensions

Floor 1

Total: 1539 sqft

Excluded: 465 sqft

#		Dimensions	sqft	Counted as living area
1	Bedroom	12'11" x 10'4"	134 sq. ft	Yes
2	Laundry	6'2" x 10'4"	64 sq. ft	Yes
3	Bedroom	9'8" x 10'7"	102 sq. ft	Yes
4	W.I.C.	8'3" x 5'5"	45 sq. ft	Yes
5	Garage	18'4" x 19'5"	356 sq. ft	No
6	Living Room	17'10" x 20'8"	368 sq. ft	Yes
7	Bath	11'10" x 5'5"	64 sq. ft	Yes
8	Bath	10'5" x 4'8"	48 sq. ft	Yes
9	Primary Bedroom	18'4" x 12'0"	220 sq. ft	Yes
10	Hall	8'10" x 5'7"	49 sq. ft	Yes
11	Dining Area	17'9" x 11'11"	211 sq. ft	Yes

Home data report

635 NW Pine St, Clatskanie, OR, US

#		Dimensions	sqft	Counted as living area
12	Kitchen	17'9" x 12'8"	225 sq. ft	Yes
13	Deck	9'3" x 11'8"	109 sq. ft	No

1 Floor 1 - Bedroom



Dimensions: 12'11" x 10'4"
Area: 134 sq. ft
Counted as living area: Yes

Heated: Yes
Finished: Yes
Enclosed: Yes
Contiguous: Yes
Permitted: Yes
Wet space: No
Addition: No
Conversion: No

2 Floor 1 - Laundry



Dimensions: 6'2" x 10'4"
Area: 64 sq. ft
Counted as living area: Yes

Heated: Yes
Finished: Yes
Enclosed: Yes
Contiguous: Yes
Permitted: Yes
Wet space: No
Addition: No
Conversion: No

3 Floor 1 - Bedroom



Dimensions: 9'8" x 10'7"
Area: 102 sq. ft
Counted as living area: Yes

Heated: Yes
Finished: Yes
Enclosed: Yes
Contiguous: Yes
Permitted: Yes
Wet space: No
Addition: No
Conversion: No

4 Floor 1 - W.I.C.



Dimensions: 8'3" x 5'5"
Area: 45 sq. ft
Counted as living area: Yes

Heated: Yes
Finished: Yes
Enclosed: Yes
Contiguous: Yes
Permitted: Yes
Wet space: No
Addition: No
Conversion: No

5 Floor 1 - Garage



Dimensions: 18'4" x 19'5"
Area: 356 sq. ft
Counted as living area: No

Heated: No
Finished: No
Enclosed: Yes
Contiguous: Yes
Permitted: Yes
Wet space: No
Addition: No
Conversion: No

6 Floor 1 - Living Room



Dimensions: 17'10" x 20'8"
Area: 368 sq. ft
Counted as living area: Yes

Heated: Yes
Finished: Yes
Enclosed: Yes
Contiguous: Yes
Permitted: Yes
Wet space: No
Addition: No
Conversion: No

7 Floor 1 - Bath



Dimensions: 11'10" x 5'5"
Area: 64 sq. ft
Counted as living area: Yes

Heated: Yes
Finished: Yes
Enclosed: Yes
Contiguous: Yes
Permitted: Yes
Wet space: Yes
Addition: No
Conversion: No

8 Floor 1 - Bath



Dimensions: 10'5" x 4'8"
Area: 48 sq. ft
Counted as living area: Yes

Heated: Yes
Finished: Yes
Enclosed: Yes
Contiguous: Yes
Permitted: Yes
Wet space: Yes
Addition: No
Conversion: No

9 Floor 1 - Primary Bedroom



Dimensions: 18'4" x 12'0"
Area: 220 sq. ft
Counted as living area: Yes

Heated: Yes
Finished: Yes
Enclosed: Yes
Contiguous: Yes
Permitted: Yes
Wet space: No
Addition: No
Conversion: No

10 Floor 1 - Hall



Dimensions: 8'10" x 5'7"
Area: 49 sq. ft
Counted as living area: Yes

Heated: Yes
Finished: Yes
Enclosed: Yes
Contiguous: Yes
Permitted: Yes
Wet space: No
Addition: No
Conversion: No

11 Floor 1 - Dining Area



Dimensions: 17'9" x 11'11"
Area: 211 sq. ft
Counted as living area: Yes

Heated: Yes
Finished: Yes
Enclosed: Yes
Contiguous: Yes
Permitted: Yes
Wet space: No
Addition: No
Conversion: No

12 Floor 1 - Kitchen



Dimensions: 17'9" x 12'8"
Area: 225 sq. ft
Counted as living area: Yes

Heated: Yes
Finished: Yes
Enclosed: Yes
Contiguous: Yes
Permitted: Yes
Wet space: No
Addition: No
Conversion: No

13 Floor 1 - Deck



Dimensions: 9'3" x 11'8"
Area: 109 sq. ft
Counted as living area: No

Heated: No
Finished: No
Enclosed: No
Contiguous: Yes
Permitted: Yes
Wet space: No
Addition: No
Conversion: No