



Total Area: 3102 sq. ft

Basement: 1412 sq. ft, 1st Floor: 1690 sq. ft

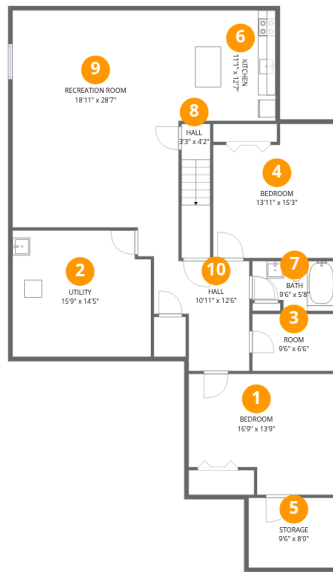
Excluded: Storage 75 sq. ft, Utility 221 sq. ft, Garage 268 sq. ft, Deck 90 sq. ft, Fireplace 6 sq. ft, Walls: 216 sq. ft

Property summary



Home data report

279 Sceptre Way, Stittsville, Ontario, Canada, K2V 0C6



Room dimensions

Floor 1 Below grade

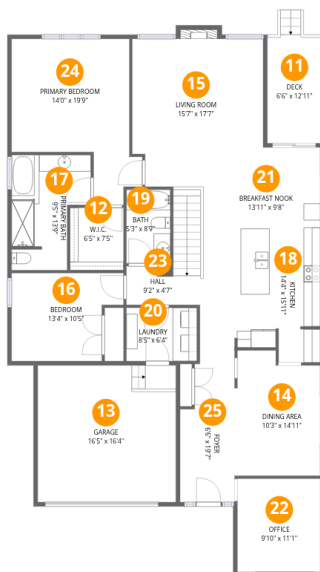
Total:1412sqft

Excluded: 296sqft

#		Dimensions	sqft	Counted as living area
1	Bedroom	16'9" x 13'9"	230 sq. ft	Yes
2	Utility	15'9" x 14'5"	227 sq. ft	No
3	Room	9'6" x 6'6"	61 sq. ft	Yes
4	Bedroom	13'11" x 15'3"	213 sq. ft	Yes
5	Storage	9'6" x 8'0"	75 sq. ft	No
6	Kitchen	11'1" x 12'7"	139 sq. ft	Yes
7	Bath	9'6" x 5'8"	54 sq. ft	Yes
8	Hall	3'3" x 4'2"	14 sq. ft	Yes
9	Recreation Room	18'11" x 28'7"	540 sq. ft	Yes
10	Hall	10'11" x 12'6"	136 sq. ft	Yes

Home data report

279 Sceptre Way, Stittsville, Ontario, Canada, K2V 0C6



Room dimensions

Floor 2

Total:1690sqft Excluded: 364sqft

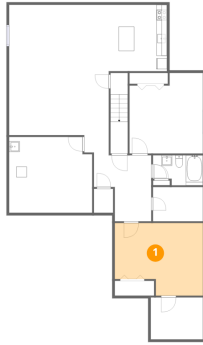
#		Dimensions	sqft	Counted as living area
11	Deck	6'6" x 12'11"	84 sq. ft	No
12	W.I.C.	6'5" x 7'5"	48 sq. ft	Yes
13	Garage	16'5" x 16'4"	268 sq. ft	No
14	Dining Area	10'3" x 14'11"	152 sq. ft	Yes
15	Living Room	15'7" x 17'7"	274 sq. ft	Yes
16	Bedroom	13'4" x 10'5"	139 sq. ft	Yes
17	Primary Bath	9'5" x 13'9"	130 sq. ft	Yes
18	Kitchen	14'4" x 15'11"	228 sq. ft	Yes
19	Bath	5'3" x 8'9"	46 sq. ft	Yes
20	Laundry	8'5" x 6'4"	54 sq. ft	Yes
21	Breakfast Nook	13'11" x 9'8"	135 sq. ft	Yes

Home data report

279 Sceptre Way, Stittsville, Ontario, Canada, K2V 0C6

#		Dimensions	sqft	Counted as living area
22	Office	9'10" x 11'1"	109 sq. ft	Yes
23	Hall	9'2" x 4'7"	42 sq. ft	Yes
24	Primary Bedroom	14'0" x 19'9"	278 sq. ft	Yes
25	Foyer	6'6" x 19'7"	127 sq. ft	Yes

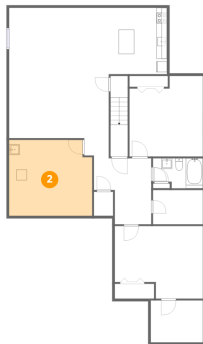
1 Floor 1 - Bedroom



Dimensions: 16'9" x 13'9"
Area: 230 sq. ft
Counted as living area: Yes

Heated: Yes
Finished: Yes
Enclosed: Yes
Contiguous: Yes
Permitted: Yes
Wet space: No
Addition: No
Conversion: No

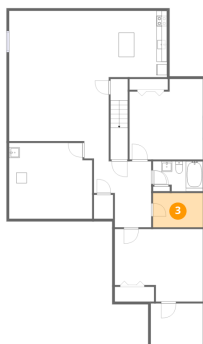
2 Floor 1 - Utility



Dimensions: 15'9" x 14'5"
Area: 227 sq. ft
Counted as living area: No

Heated: Yes
Finished: No
Enclosed: Yes
Contiguous: Yes
Permitted: Yes
Wet space: No
Addition: No
Conversion: No

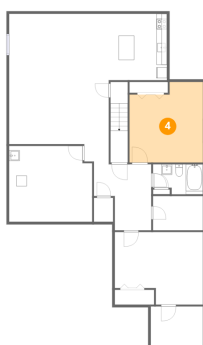
3 Floor 1 - Room



Dimensions: 9'6" x 6'6"
Area: 61 sq. ft
Counted as living area: Yes

Heated: Yes
Finished: Yes
Enclosed: Yes
Contiguous: Yes
Permitted: Yes
Wet space: No
Addition: No
Conversion: No

4 Floor 1 - Bedroom



Dimensions: 13'11" x 15'3"
Area: 213 sq. ft
Counted as living area: Yes

Heated: Yes
Finished: Yes
Enclosed: Yes
Contiguous: Yes
Permitted: Yes
Wet space: No
Addition: No
Conversion: No

5 Floor 1 - Storage



Dimensions: 9'6" x 8'0"
Area: 75 sq. ft
Counted as living area: No

Heated: No
Finished: No
Enclosed: No
Contiguous: Yes
Permitted: Yes
Wet space: No
Addition: No
Conversion: No

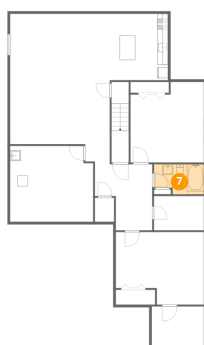
6 Floor 1 - Kitchen



Dimensions: 11'1" x 12'7"
Area: 139 sq. ft
Counted as living area: Yes

Heated: Yes
Finished: Yes
Enclosed: Yes
Contiguous: Yes
Permitted: Yes
Wet space: No
Addition: No
Conversion: No

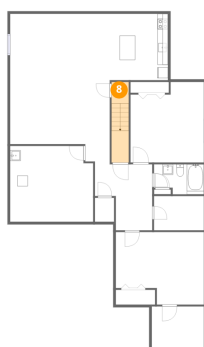
7 Floor 1 - Bath



Dimensions: 9'6" x 5'8"
Area: 54 sq. ft
Counted as living area: Yes

Heated: Yes
Finished: Yes
Enclosed: Yes
Contiguous: Yes
Permitted: Yes
Wet space: Yes
Addition: No
Conversion: No

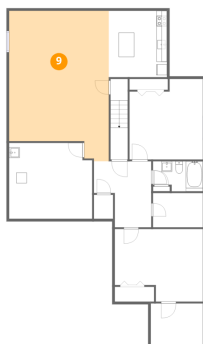
8 Floor 1 - Hall



Dimensions: 3'3" x 4'2"
Area: 14 sq. ft
Counted as living area: Yes

Heated: Yes
Finished: Yes
Enclosed: Yes
Contiguous: Yes
Permitted: Yes
Wet space: No
Addition: No
Conversion: No

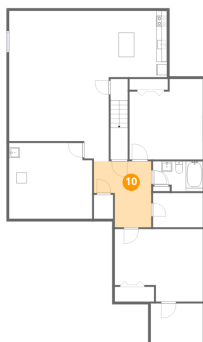
9 Floor 1 - Recreation Room



Dimensions: 18'11" x 28'7"
Area: 540 sq. ft
Counted as living area: Yes

Heated: Yes
Finished: Yes
Enclosed: Yes
Contiguous: Yes
Permitted: Yes
Wet space: No
Addition: No
Conversion: No

10 Floor 1 - Hall



Dimensions: 10'11" x 12'6"
Area: 136 sq. ft
Counted as living area: Yes

Heated: Yes
Finished: Yes
Enclosed: Yes
Contiguous: Yes
Permitted: Yes
Wet space: No
Addition: No
Conversion: No

11 Floor 2 - Deck



Dimensions: 6'6" x 12'11"
Area: 84 sq. ft
Counted as living area: No

Heated: No
Finished: No
Enclosed: No
Contiguous: Yes
Permitted: Yes
Wet space: No
Addition: No
Conversion: No

12 Floor 2 - W.I.C.



Dimensions: 6'5" x 7'5"
Area: 48 sq. ft
Counted as living area: Yes

Heated: Yes
Finished: Yes
Enclosed: Yes
Contiguous: Yes
Permitted: Yes
Wet space: No
Addition: No
Conversion: No

13 Floor 2 - Garage



Dimensions: 16'5" x 16'4"
Area: 268 sq. ft
Counted as living area: No

Heated: No
Finished: No
Enclosed: Yes
Contiguous: Yes
Permitted: Yes
Wet space: No
Addition: No
Conversion: No

14 Floor 2 - Dining Area



Dimensions: 10'3" x 14'11"
Area: 152 sq. ft
Counted as living area: Yes

Heated: Yes
Finished: Yes
Enclosed: Yes
Contiguous: Yes
Permitted: Yes
Wet space: No
Addition: No
Conversion: No

15 Floor 2 - Living Room



Dimensions: 15'7" x 17'7"
Area: 274 sq. ft
Counted as living area: Yes

Heated: Yes
Finished: Yes
Enclosed: Yes
Contiguous: Yes
Permitted: Yes
Wet space: No
Addition: No
Conversion: No

16 Floor 2 - Bedroom



Dimensions: 13'4" x 10'5"
Area: 139 sq. ft
Counted as living area: Yes

Heated: Yes
Finished: Yes
Enclosed: Yes
Contiguous: Yes
Permitted: Yes
Wet space: No
Addition: No
Conversion: No

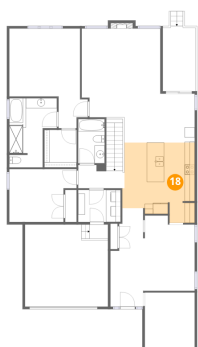
17 Floor 2 - Primary Bath



Dimensions: 9'5" x 13'9"
Area: 130 sq. ft
Counted as living area: Yes

Heated: Yes
Finished: Yes
Enclosed: Yes
Contiguous: Yes
Permitted: Yes
Wet space: Yes
Addition: No
Conversion: No

18 Floor 2 - Kitchen



Dimensions: 14'4" x 15'11"
Area: 228 sq. ft
Counted as living area: Yes

Heated: Yes
Finished: Yes
Enclosed: Yes
Contiguous: Yes
Permitted: Yes
Wet space: No
Addition: No
Conversion: No

19 Floor 2 - Bath



Dimensions: 5'3" x 8'9"
Area: 46 sq. ft
Counted as living area: Yes

Heated: Yes
Finished: Yes
Enclosed: Yes
Contiguous: Yes
Permitted: Yes
Wet space: Yes
Addition: No
Conversion: No

20 Floor 2 - Laundry



Dimensions: 8'5" x 6'4"
Area: 54 sq. ft
Counted as living area: Yes

Heated: Yes
Finished: Yes
Enclosed: Yes
Contiguous: Yes
Permitted: Yes
Wet space: No
Addition: No
Conversion: No

21 Floor 2 - Breakfast Nook



Dimensions: 13'11" x 9'8"
Area: 135 sq. ft
Counted as living area: Yes

Heated: Yes
Finished: Yes
Enclosed: Yes
Contiguous: Yes
Permitted: Yes
Wet space: No
Addition: No
Conversion: No

22 Floor 2 - Office



Dimensions: 9'10" x 11'1"
Area: 109 sq. ft
Counted as living area: Yes

Heated: Yes
Finished: Yes
Enclosed: Yes
Contiguous: Yes
Permitted: Yes
Wet space: No
Addition: No
Conversion: No

23 Floor 2 - Hall



Dimensions: 9'2" x 4'7"
Area: 42 sq. ft
Counted as living area: Yes

Heated: Yes
Finished: Yes
Enclosed: Yes
Contiguous: Yes
Permitted: Yes
Wet space: No
Addition: No
Conversion: No

24 Floor 2 - Primary Bedroom



Dimensions: 14'0" x 19'9"
Area: 278 sq. ft
Counted as living area: Yes

Heated: Yes
Finished: Yes
Enclosed: Yes
Contiguous: Yes
Permitted: Yes
Wet space: No
Addition: No
Conversion: No

25 Floor 2 - Foyer



Dimensions: 6'6" x 19'7"
Area: 127 sq. ft
Counted as living area: Yes

Heated: Yes
Finished: Yes
Enclosed: Yes
Contiguous: Yes
Permitted: Yes
Wet space: No
Addition: No
Conversion: No