

Home data report

8920 Bennett Ave, Evanston, IL, US



Total Area: 1581 sq. ft

Basement: 342 sq. ft, 1st Floor: 739 sq. ft, 2nd Floor: 500 sq. ft

Excluded: Utility 157 sq. ft, Walls: 137 sq. ft

Property summary

 **3** Floors

 **3** Bedrooms

 **1** Bathrooms

 **1** Half baths



Room dimensions

Floor 1 Below grade

Total:342sqft

Excluded: 157sqft

#		Dimensions	sqft	Counted as living area
1	Utility	16'7" x 18'6"	157 sq. ft	No
2	Recreation Room	16'7" x 25'4"	332 sq. ft	Yes

Home data report

8920 Bennett Ave, Evanston, IL, US

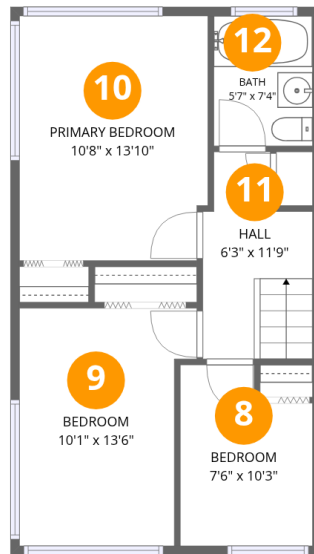


Room dimensions

Floor 2

Total: 739sqft Excluded: 0sqft

#		Dimensions	sqft	Counted as living area
3	Room	12'1" x 19'6"	222 sq. ft	Yes
4	Kitchen	11'3" x 13'4"	120 sq. ft	Yes
5	Dining Area	5'4" x 10'9"	58 sq. ft	Yes
6	Living Room	16'8" x 19'5"	312 sq. ft	Yes
7	Bath	3'0" x 4'8"	14 sq. ft	Yes



Room dimensions

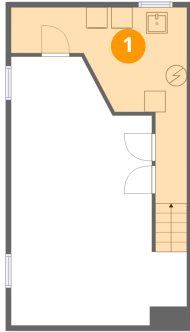
Floor 3

Total:500sqft

Excluded: 0sqft

#		Dimensions	sqft	Counted as living area
8	Bedroom	7'6" x 10'3"	70 sq. ft	Yes
9	Bedroom	10'1" x 13'6"	122 sq. ft	Yes
10	Primary Bedroom	10'8" x 13'10"	146 sq. ft	Yes
11	Hall	6'3" x 11'9"	63 sq. ft	Yes
12	Bath	5'7" x 7'4"	41 sq. ft	Yes

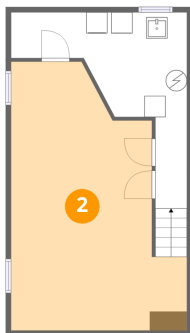
1 Floor 1 - Utility



Dimensions: 16'7" x 18'6"
Area: 157 sq. ft
Counted as living area: No

Heated: Yes
Finished: No
Enclosed: Yes
Contiguous: Yes
Permitted: Yes
Wet space: No
Addition: No
Conversion: No

2 Floor 1 - Recreation Room



Dimensions: 16'7" x 25'4"
Area: 332 sq. ft
Counted as living area: No

Heated: Yes
Finished: Yes
Enclosed: Yes
Contiguous: No
Permitted: Yes
Wet space: No
Addition: No
Conversion: No

3 Floor 2 - Room



Dimensions: 12'1" x 19'6"
Area: 222 sq. ft
Counted as living area: Yes

Heated: Yes
Finished: Yes
Enclosed: Yes
Contiguous: Yes
Permitted: Yes
Wet space: No
Addition: No
Conversion: No

4 Floor 2 - Kitchen



Dimensions: 11'3" x 13'4"
Area: 120 sq. ft
Counted as living area: Yes

Heated: Yes
Finished: Yes
Enclosed: Yes
Contiguous: Yes
Permitted: Yes
Wet space: No
Addition: No
Conversion: No

5 Floor 2 - Dining Area



Dimensions: 5'4" x 10'9"
Area: 58 sq. ft
Counted as living area: Yes

Heated: Yes
Finished: Yes
Enclosed: Yes
Contiguous: Yes
Permitted: Yes
Wet space: No
Addition: No
Conversion: No

6 Floor 2 - Living Room



Dimensions: 16'8" x 19'5"
Area: 312 sq. ft
Counted as living area: Yes

Heated: Yes
Finished: Yes
Enclosed: Yes
Contiguous: Yes
Permitted: Yes
Wet space: No
Addition: No
Conversion: No

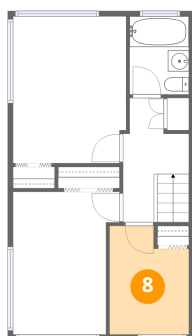
7 Floor 2 - Bath



Dimensions: 3'0" x 4'8"
Area: 14 sq. ft
Counted as living area: Yes

Heated: Yes
Finished: Yes
Enclosed: Yes
Contiguous: Yes
Permitted: Yes
Wet space: Yes
Addition: No
Conversion: No

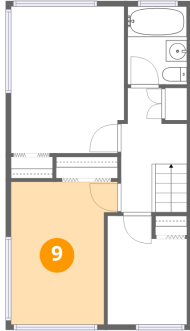
8 Floor 3 - Bedroom



Dimensions: 7'6" x 10'3"
Area: 70 sq. ft
Counted as living area: Yes

Heated: Yes
Finished: Yes
Enclosed: Yes
Contiguous: Yes
Permitted: Yes
Wet space: No
Addition: No
Conversion: No

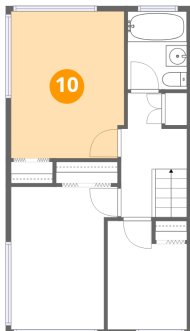
9 Floor 3 - Bedroom



Dimensions: 10'1" x 13'6"
Area: 122 sq. ft
Counted as living area: Yes

Heated: Yes
Finished: Yes
Enclosed: Yes
Contiguous: Yes
Permitted: Yes
Wet space: No
Addition: No
Conversion: No

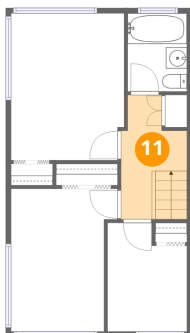
10 Floor 3 - Primary Bedroom



Dimensions: 10'8" x 13'10"
Area: 146 sq. ft
Counted as living area: Yes

Heated: Yes
Finished: Yes
Enclosed: Yes
Contiguous: Yes
Permitted: Yes
Wet space: No
Addition: No
Conversion: No

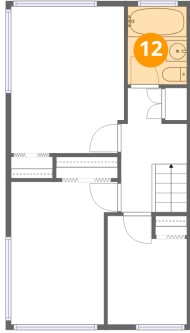
11 Floor 3 - Hall



Dimensions: 6'3" x 11'9"
Area: 63 sq. ft
Counted as living area: Yes

Heated: Yes
Finished: Yes
Enclosed: Yes
Contiguous: Yes
Permitted: Yes
Wet space: No
Addition: No
Conversion: No

12 Floor 3 - Bath



Dimensions: 5'7" x 7'4"
Area: 41 sq. ft
Counted as living area: Yes

Heated: Yes
Finished: Yes
Enclosed: Yes
Contiguous: Yes
Permitted: Yes
Wet space: Yes
Addition: No
Conversion: No