

14 Provincetown Court, Provincetown, Greensboro, Guilford County, North Carolina, United States, 27408

Gross Living Area: 7621 sq. ft

Level 1

Space	Area (sq. ft)	Calculation <small>Coordinate Polygon Area Algorithm using inches</small>
1st floor (Living area)	2265	$ \begin{aligned} & -((200 + 200) * (74.8 - 506.3) + (200 + 636.3) * (506.3 - 506.3) + (636.3 + 636.3) * (506.3 - 796.2) \\ & + (636.3 + 690.1) * (796.2 - 796.2) + (690.1 + 690.1) * (796.2 - 876.2) + (690.1 + 668.6) * (876.2 - \\ & 876.2) + (668.6 + 668.6) * (876.2 - 947.7) + (668.6 + 554.7) * (947.7 - 947.7) + (554.7 + 554.7) * \\ & (947.7 - 874.5) + (554.7 + 487.1) * (874.5 - 874.5) + (487.1 + 487.1) * (874.5 - 919.7) + (487.1 + \\ & 316.2) * (919.7 - 919.7) + (316.2 + 316.2) * (919.7 - 933.6) + (316.2 + 177.9) * (933.6 - 933.6) + \\ & (177.9 + 177.9) * (933.6 - 919.7) + (177.9 + 27.9) * (919.7 - 919.7) + (27.9 + 27.9) * (919.7 - \\ & 416.5) + (27.9 + 92.2) * (416.5 - 416.5) + (92.2 + 92.2) * (416.5 - 447.5) + (92.2 + 148) * (447.5 - \\ & 447.5) + (148 + 148) * (447.5 - 360.4) + (148 + 109.1) * (360.4 - 360.4) + (109.1 + 109.1) * \\ & (360.4 - 373.6) + (109.1 + 27.9) * (373.6 - 373.6) + (27.9 + 27.9) * (373.6 - 74.8) + (27.9 + 200) * \\ & (74.8 - 74.8)) * 0.5 * 0.00694 \end{aligned} $
STORAGE (Non-living area)	78	$ \begin{aligned} & -((316.2 + 316.2) * (933.6 - 1015) + (316.2 + 177.9) * (1015 - 1015) + (177.9 + 177.9) * (1015 - \\ & 933.6) + (177.9 + 316.2) * (933.6 - 933.6)) * 0.5 * 0.00694 \end{aligned} $
UTILITY (Non-living area)	122	$ \begin{aligned} & -((796.1 + 796.1) * (796.2 - 947.7) + (796.1 + 668.6) * (947.7 - 947.7) + (668.6 + 668.6) * (947.7 - \\ & 876.2) + (668.6 + 690.1) * (876.2 - 876.2) + (690.1 + 690.1) * (876.2 - 796.2) + (690.1 + 796.1) * \\ & (796.2 - 796.2)) * 0.5 * 0.00694 \end{aligned} $
UTILITY (Non-living area)	51	$ \begin{aligned} & -((148 + 148) * (360.4 - 447.5) + (148 + 92.2) * (447.5 - 447.5) + (92.2 + 92.2) * (447.5 - 416.5) + \\ & (92.2 + 27.9) * (416.5 - 416.5) + (27.9 + 27.9) * (416.5 - 373.6) + (27.9 + 109.1) * (373.6 - 373.6) \\ & + (109.1 + 109.1) * (373.6 - 360.4) + (109.1 + 148) * (360.4 - 360.4)) * 0.5 * 0.00694 \end{aligned} $

14 Provincetown Court, Provincetown, Greensboro, Guilford County, North Carolina, United States, 27408

Gross Living Area: 7621 sq. ft

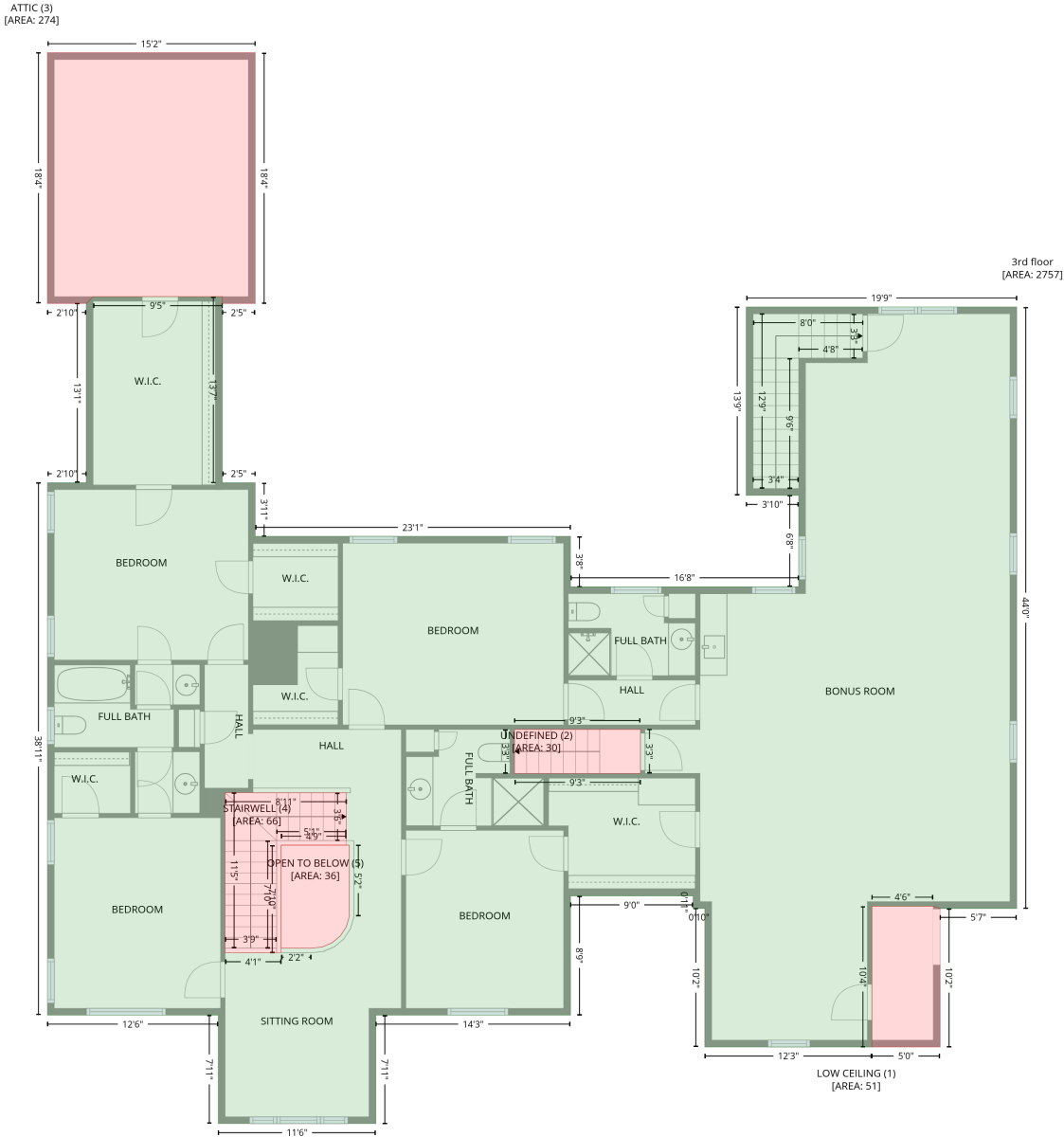
Level 2

Space	Area (sq. ft)	Calculation <small>Coordinate Polygon Area Algorithm using inches</small>
2nd floor (Living area)	2599	$-\left((210.3 + 210.3) * (74.8 - 499.4) + (210.3 + 513.1) * (499.4 - 499.4) + (513.1 + 513.1) * (499.4 - 491.2) + (513.1 + 536.3) * (491.2 - 459.1) + (536.3 + 594) * (459.1 - 459.1) + (594 + 617.8) * (459.1 - 492.2) + (617.8 + 617.8) * (492.2 - 499.4) + (617.8 + 641.3) * (499.4 - 499.4) + (641.3 + 641.3) * (499.4 - 457) + (641.3 + 693.4) * (457 - 457) + (693.4 + 693.4) * (457 - 556.8) + (693.4 + 647.3) * (556.8 - 556.8) + (647.3 + 647.3) * (556.8 - 782.6) + (647.3 + 796.1) * (782.6 - 782.6) + (796.1 + 796.1) * (782.6 - 947.7) + (796.1 + 542.5) * (947.7 - 947.7) + (542.5 + 542.5) * (947.7 - 885.9) + (542.5 + 487.1) * (885.9 - 885.9) + (487.1 + 487.1) * (885.9 - 919.7) + (487.1 + 316.2) * (919.7 - 919.7) + (316.2 + 316.2) * (919.7 - 938.2) + (316.2 + 177.9) * (938.2 - 938.2) + (177.9 + 177.9) * (938.2 - 919.7) + (177.9 + 27.9) * (919.7 - 919.7) + (27.9 + 27.9) * (919.7 - 74.8) + (27.9 + 210.3) * (74.8 - 74.8)\right) * 0.5 * 0.00694$
GARAGE (Non-living area)	808	$-\left((923.7 + 923.7) * (381.9 - 885.9) + (923.7 + 796.1) * (885.9 - 885.9) + (796.1 + 796.1) * (885.9 - 782.6) + (796.1 + 647.3) * (782.6 - 782.6) + (647.3 + 647.3) * (782.6 - 556.8) + (647.3 + 693.4) * (556.8 - 556.8) + (693.4 + 693.4) * (556.8 - 457) + (693.4 + 687.4) * (457 - 457) + (687.4 + 687.4) * (457 - 381.9) + (687.4 + 923.7) * (381.9 - 381.9)\right) * 0.5 * 0.00694$
SCREENED PORCH (Non-living area)	528	$-\left((641.3 + 641.3) * (316.9 - 322.9) + (641.3 + 647.3) * (322.9 - 322.9) + (647.3 + 647.3) * (322.9 - 457) + (647.3 + 641.3) * (457 - 457) + (641.3 + 641.3) * (457 - 499.4) + (641.3 + 617.8) * (499.4 - 499.4) + (617.8 + 617.8) * (499.4 - 492.2) + (617.8 + 605.9) * (492.2 - 475.6) + (605.9 + 594) * (475.6 - 459.1) + (594 + 536.3) * (459.1 - 459.1) + (536.3 + 524.8) * (459.1 - 475.2) + (524.8 + 513.1) * (475.2 - 491.2) + (513.1 + 513.1) * (491.2 - 499.4) + (513.1 + 210.3) * (499.4 - 499.4) + (210.3 + 210.3) * (499.4 - 316.9) + (210.3 + 641.3) * (316.9 - 316.9)\right) * 0.5 * 0.00694$
UTILITY (Non-living area)	183	$-\left((923.7 + 923.7) * (298 - 381.9) + (923.7 + 687.4) * (381.9 - 381.9) + (687.4 + 687.4) * (381.9 - 457) + (687.4 + 647.3) * (457 - 457) + (647.3 + 647.3) * (457 - 322.9) + (647.3 + 641.3) * (322.9 - 322.9) + (641.3 + 641.3) * (322.9 - 298) + (641.3 + 923.7) * (298 - 298)\right) * 0.5 * 0.00694$

14 Provincetown Court, Provincetown, Greensboro, Guilford County, North Carolina, United States, 27408

Gross Living Area: 7621 sq. ft

Level 3



14 Provincetown Court, Provincetown, Greensboro, Guilford County, North Carolina, United States, 27408

Gross Living Area: 7621 sq. ft

Level 3

Space	Area (sq. ft)	Calculation <small>Coordinate Polygon Area Algorithm using inches</small>
3rd floor (Living area)	2757	$-\left((181.4 + 181.4) * (288.9 - 452.3) + (181.4 + 210.3) * (452.3 - 452.3) + (210.3 + 210.3) * (452.3 - 499.4) + (210.3 + 487) * (499.4 - 499.4) + (487 + 487) * (499.4 - 543.7) + (487 + 687.4) * (543.7 - 543.7) + (687.4 + 687.4) * (543.7 - 463.4) + (687.4 + 641.3) * (463.4 - 463.4) + (641.3 + 641.3) * (463.4 - 298) + (641.3 + 878.8) * (298 - 298) + (878.8 + 878.8) * (298 - 826) + (878.8 + 811.5) * (826 - 826) + (811.5 + 805.5) * (826 - 824) + (805.5 + 751.6) * (824 - 824) + (751.6 + 751.6) * (824 - 947.7) + (751.6 + 605) * (947.7 - 947.7) + (605 + 605) * (947.7 - 826) + (605 + 594.7) * (826 - 826) + (594.7 + 594.7) * (826 - 815) + (594.7 + 487.1) * (815 - 815) + (487.1 + 487.1) * (815 - 919.7) + (487.1 + 316.2) * (919.7 - 919.7) + (316.2 + 316.2) * (919.7 - 1015) + (316.2 + 177.9) * (1015 - 1015) + (177.9 + 177.9) * (1015 - 919.7) + (177.9 + 27.9) * (919.7 - 919.7) + (27.9 + 27.9) * (919.7 - 452.3) + (27.9 + 62) * (452.3 - 452.3) + (62 + 62) * (452.3 - 294.9) + (62 + 68) * (294.9 - 288.9) + (68 + 181.4) * (288.9 - 288.9) * 0.5 * 0.00694 + -((290.5 + 183.9) * (724.4 - 724.4) + (183.9 + 183.9) * (724.4 - 864.9) + (183.9 + 233.1) * (864.9 - 864.9) + (233.1 + 233.1) * (864.9 - 860.9) + (233.1 + 259.4) * (860.9 - 860.9) + (259.4 + 268.9) * (860.9 - 860) + (268.9 + 277.7) * (860 - 856.3) + (277.7 + 285.1) * (856.3 - 850.1) + (285.1 + 290.3) * (850.1 - 842.1) + (290.3 + 292.9) * (842.1 - 832.9) + (292.9 + 292.9) * (832.9 - 770.5) + (292.9 + 290.5) * (770.5 - 770.5) + (290.5 + 290.5) * (770.5 - 724.4)) * 0.5 * 0.00694 + -((548.5 + 437.9) * (668.9 - 668.9) + (437.9 + 437.9) * (668.9 - 707.4) + (437.9 + 548.5) * (707.4 - 707.4) + (548.5 + 548.5) * (707.4 - 668.9)) * 0.5 * 0.00694$
LOW CEILING (Non-living area)	51	$-\left((805.5 + 811.5) * (824 - 826) + (811.5 + 811.5) * (826 - 947.7) + (811.5 + 751.6) * (947.7 - 947.7) + (751.6 + 751.6) * (947.7 - 824) + (751.6 + 805.5) * (824 - 824)) * 0.5 * 0.00694$
UNDEFINED (Non-living area)	30	$-\left((548.5 + 548.5) * (668.9 - 707.4) + (548.5 + 437.9) * (707.4 - 707.4) + (437.9 + 437.9) * (707.4 - 668.9) + (437.9 + 548.5) * (668.9 - 668.9)) * 0.5 * 0.00694$
ATTIC (Non-living area)	274	$-\left((210.3 + 210.3) * (74.8 - 294.9) + (210.3 + 181.4) * (294.9 - 294.9) + (181.4 + 181.4) * (294.9 - 288.9) + (181.4 + 68) * (288.9 - 288.9) + (68 + 62) * (288.9 - 294.9) + (62 + 27.9) * (294.9 - 294.9) + (27.9 + 27.9) * (294.9 - 74.8) + (27.9 + 210.3) * (74.8 - 74.8)) * 0.5 * 0.00694$
STAIRWELL (Non-living area)	66	$-\left((290.5 + 290.5) * (724.4 - 770.5) + (290.5 + 233.1) * (770.5 - 770.5) + (233.1 + 233.1) * (770.5 - 864.9) + (233.1 + 183.9) * (864.9 - 864.9) + (183.9 + 183.9) * (864.9 - 724.4) + (183.9 + 290.5) * (724.4 - 724.4)) * 0.5 * 0.00694$
OPEN TO BELOW (Non-living area)	36	$-\left((292.9 + 292.9) * (770.5 - 832.9) + (292.9 + 290.3) * (832.9 - 842.1) + (290.3 + 285.1) * (842.1 - 850.1) + (285.1 + 277.7) * (850.1 - 856.3) + (277.7 + 268.9) * (856.3 - 860) + (268.9 + 259.4) * (860 - 860.9) + (259.4 + 233.1) * (860.9 - 860.9) + (233.1 + 233.1) * (860.9 - 770.5) + (233.1 + 292.9) * (770.5 - 770.5)) * 0.5 * 0.00694$

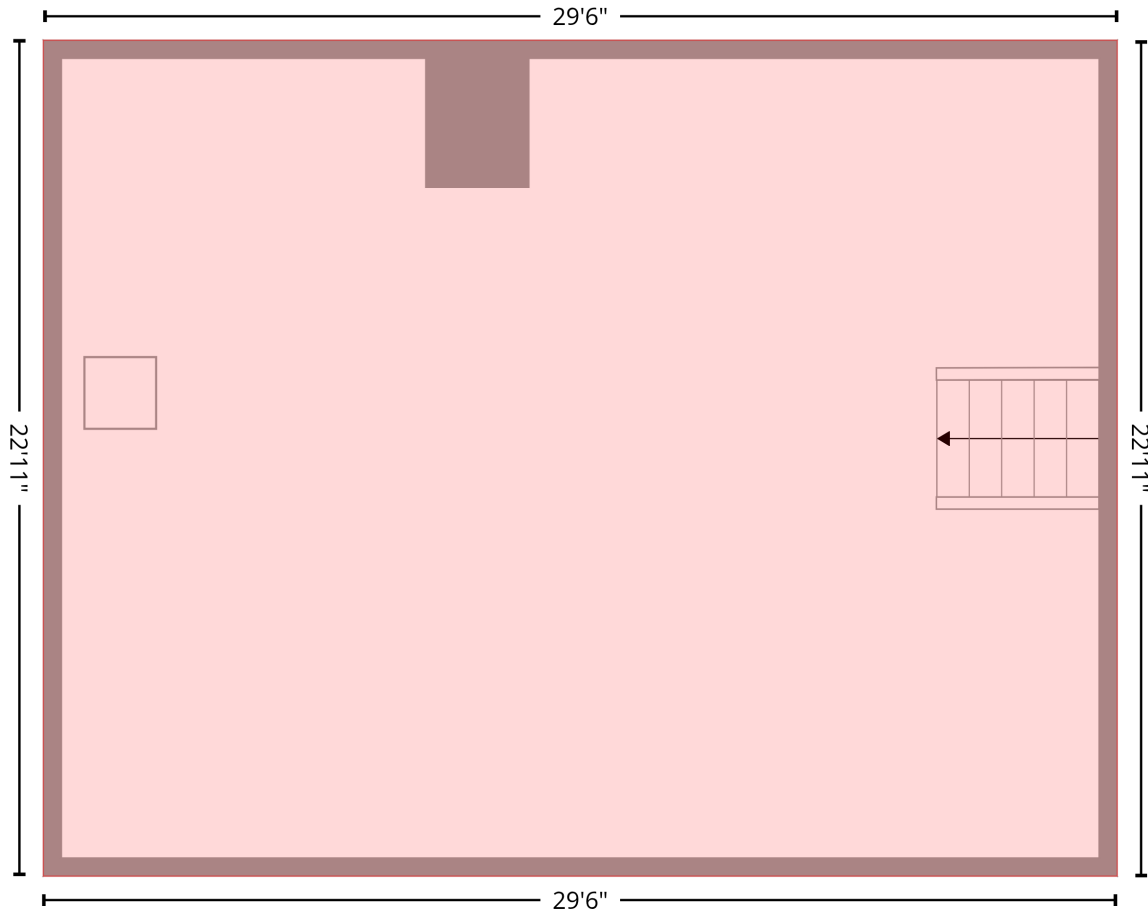
14 Provincetown Court, Provincetown, Greensboro, Guilford County, North Carolina, United States, 27408

Gross Living Area: 7621 sq. ft

Level 4

4th floor
[AREA: 0]

ATTIC (1)
[AREA: 677]



Space	Area (sq. ft)	Calculation <small>Coordinate Polygon Area Algorithm using inches</small>
ATTIC (Non-living area)	677	$-((443.5 + 443.5) * (557 - 832.3) + (443.5 + 89.7) * (832.3 - 832.3) + (89.7 + 89.7) * (832.3 - 557) + (89.7 + 443.5) * (557 - 557)) * 0.5 * 0.00694$