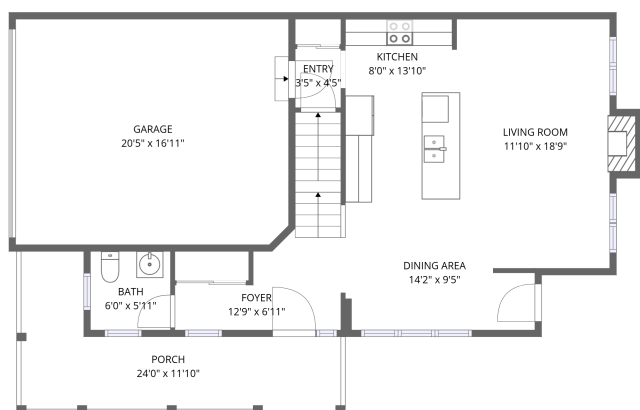
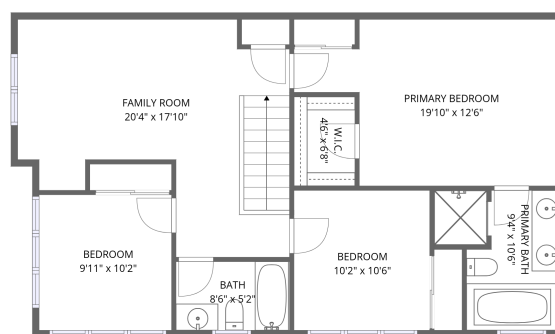


Home data report

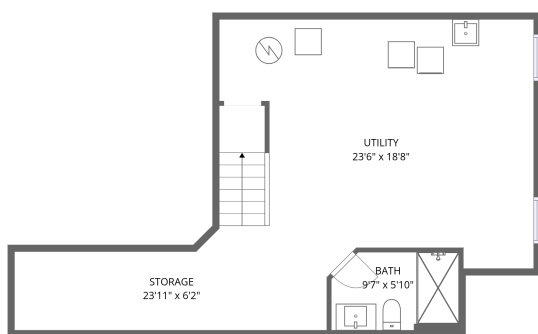
213 Soldats-Riendeau Street, Stonebridge, Nepean, Ontario, Canada, K2J 5Z4



1st floor



2nd floor



Basement

Total Area: 1602 sq. ft

Basement: 59 sq. ft, 1st Floor: 618 sq. ft, 2nd Floor: 925 sq. ft

Excluded: Storage 143 sq. ft, Utility 413 sq. ft, Garage 345 sq. ft, Porch 160 sq. ft, Fireplace 10 sq. ft, Walls: 210 sq. ft

Property summary



Home data report

**213 Soldats-Riendeau Street, Stonebridge, Nepean, Ontario,
Canada, K2J 5Z4**



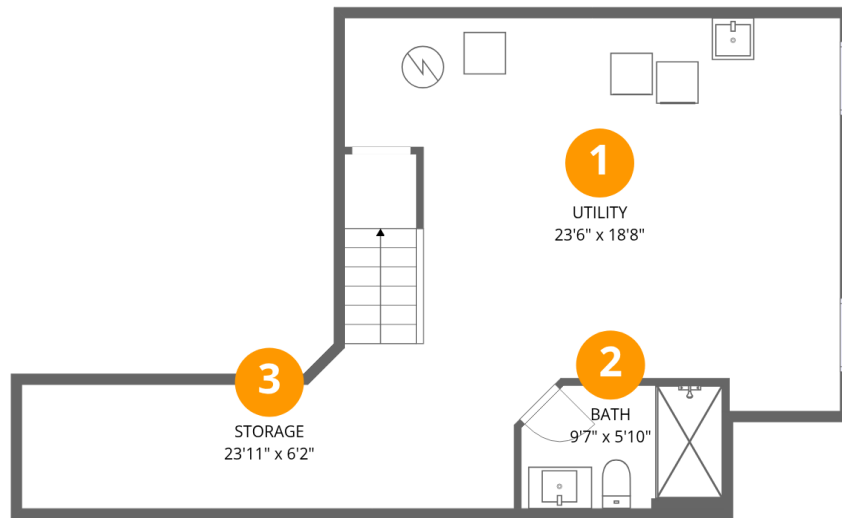
1
Half baths



1
Garages

Home data report

213 Soldats-Riendeau Street, Stonebridge, Nepean, Ontario, Canada, K2J 5Z4



Room dimensions

Floor 1 Below grade

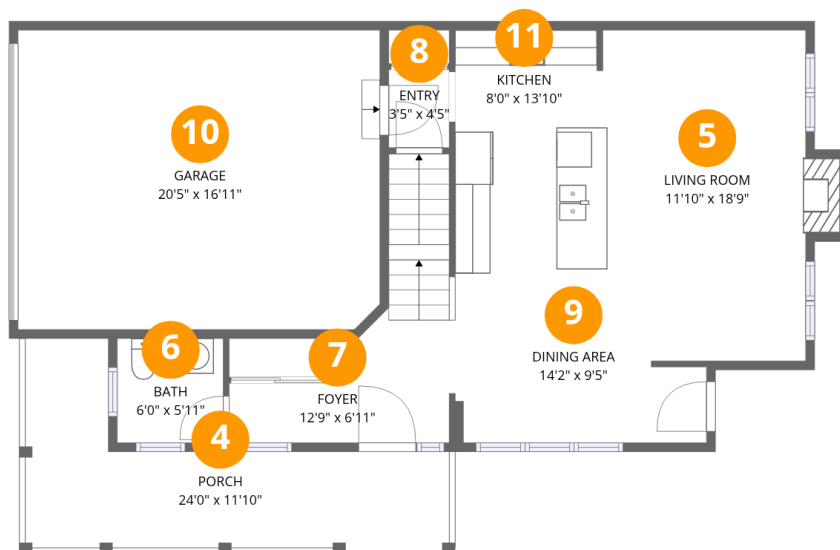
Total:59sqft

Excluded: 556sqft

#		Dimensions	sqft	Counted as living area
1	Utility	23'6" x 18'8"	411 sq. ft	No
2	Bath	9'7" x 5'10"	54 sq. ft	Yes
3	Storage	23'11" x 6'2"	143 sq. ft	No

Home data report

213 Soldats-Riendeau Street, Stonebridge, Nepean, Ontario, Canada, K2J 5Z4



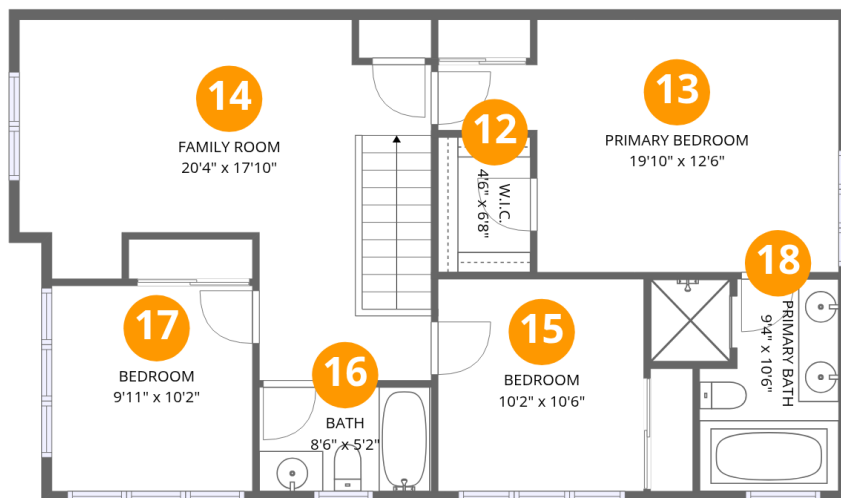
Room dimensions

Floor 2

Total:618sqft Excluded: 515sqft

#		Dimensions	sqft	Counted as living area
4	Porch	24'0" x 11'10"	160 sq. ft	No
5	Living Room	11'10" x 18'9"	213 sq. ft	Yes
6	Bath	6'0" x 5'11"	35 sq. ft	Yes
7	Foyer	12'9" x 6'11"	98 sq. ft	Yes
8	Entry	3'5" x 4'5"	15 sq. ft	Yes
9	Dining Area	14'2" x 9'5"	118 sq. ft	Yes
10	Garage	20'5" x 16'11"	345 sq. ft	No
11	Kitchen	8'0" x 13'10"	112 sq. ft	Yes

213 Soldats-Riendeau Street, Stonebridge, Nepean, Ontario, Canada, K2J 5Z4



Room dimensions

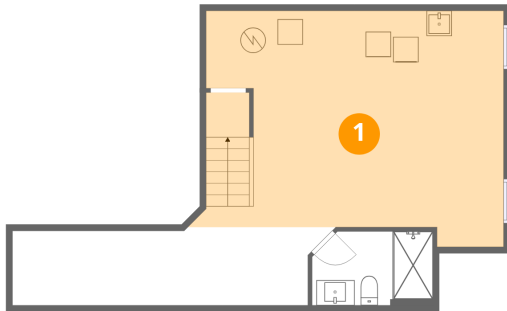
Floor 3

Total:925sqft Excluded: 0sqft

#		Dimensions	sqft	Counted as living area
12	W.I.C.	4'6" x 6'8"	31 sq. ft	Yes
13	Primary Bedroom	19'10" x 12'6"	202 sq. ft	Yes
14	Family Room	20'4" x 17'10"	276 sq. ft	Yes
15	Bedroom	10'2" x 10'6"	107 sq. ft	Yes
16	Bath	8'6" x 5'2"	44 sq. ft	Yes
17	Bedroom	9'11" x 10'2"	101 sq. ft	Yes
18	Primary Bath	9'4" x 10'6"	81 sq. ft	Yes

213 Soldats-Riendeau Street, Stonebridge, Nepean, Ontario,
Canada, K2J 5Z4

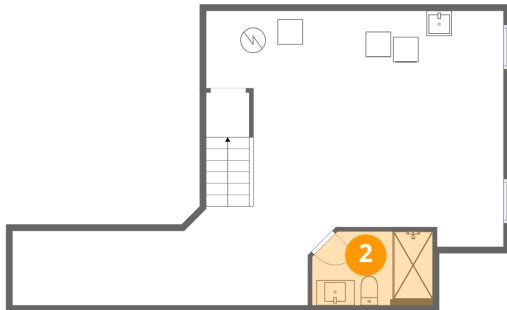
1 Floor 1 - Utility



Dimensions: 23'6" x 18'8"
Area: 411 sq. ft
Counted as living area: No

Heated: Yes
Finished: No
Enclosed: Yes
Contiguous: Yes
Permitted: Yes
Wet space: No
Addition: No
Conversion: No

2 Floor 1 - Bath

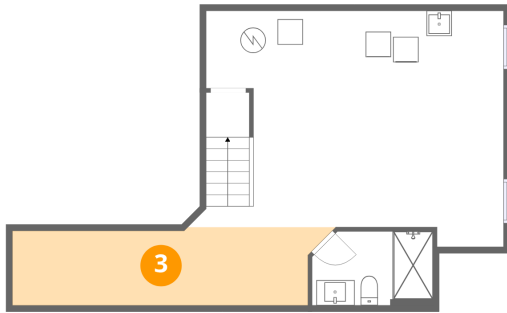


Dimensions: 9'7" x 5'10"
Area: 54 sq. ft
Counted as living area: No

Heated: Yes
Finished: Yes
Enclosed: Yes
Contiguous: No
Permitted: Yes
Wet space: Yes
Addition: No
Conversion: No

213 Soldats-Riendeau Street, Stonebridge, Nepean, Ontario, Canada, K2J 5Z4

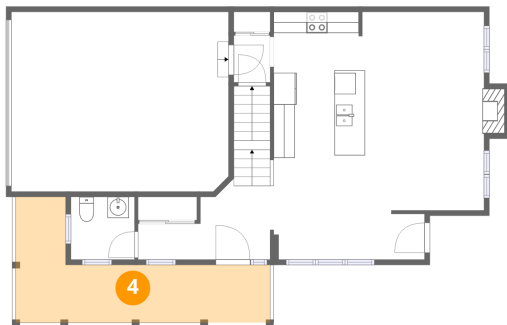
3 Floor 1 - Storage



Dimensions: 23'11" x 6'2"
Area: 143 sq. ft
Counted as living area: No

Heated: No
Finished: No
Enclosed: No
Contiguous: Yes
Permitted: Yes
Wet space: No
Addition: No
Conversion: No

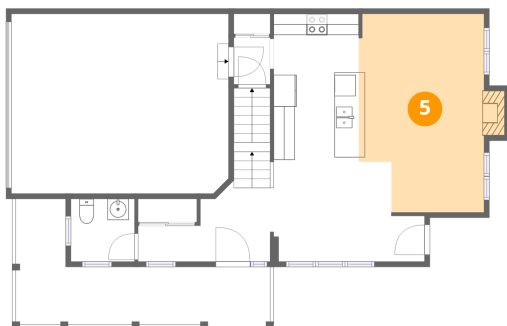
4 Floor 2 - Porch



Dimensions: 24'0" x 11'10"
Area: 160 sq. ft
Counted as living area: No

Heated: No
Finished: No
Enclosed: No
Contiguous: Yes
Permitted: Yes
Wet space: No
Addition: No
Conversion: No

5 Floor 2 - Living Room



Dimensions: 11'10" x 18'9"
Area: 213 sq. ft
Counted as living area: Yes

Heated: Yes
Finished: Yes
Enclosed: Yes
Contiguous: Yes
Permitted: Yes
Wet space: No
Addition: No
Conversion: No

6 Floor 2 - Bath



Dimensions: 6'0" x 5'11"
Area: 35 sq. ft
Counted as living area: Yes

Heated: Yes
Finished: Yes
Enclosed: Yes
Contiguous: Yes
Permitted: Yes
Wet space: Yes
Addition: No
Conversion: No

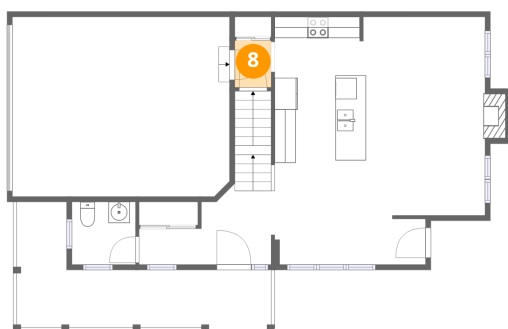
7 Floor 2 - Foyer



Dimensions: 12'9" x 6'11"
Area: 98 sq. ft
Counted as living area: Yes

Heated: Yes
Finished: Yes
Enclosed: Yes
Contiguous: Yes
Permitted: Yes
Wet space: No
Addition: No
Conversion: No

8 Floor 2 - Entry



Dimensions: 3'5" x 4'5"
Area: 15 sq. ft
Counted as living area: Yes

Heated: Yes
Finished: Yes
Enclosed: Yes
Contiguous: Yes
Permitted: Yes
Wet space: No
Addition: No
Conversion: No

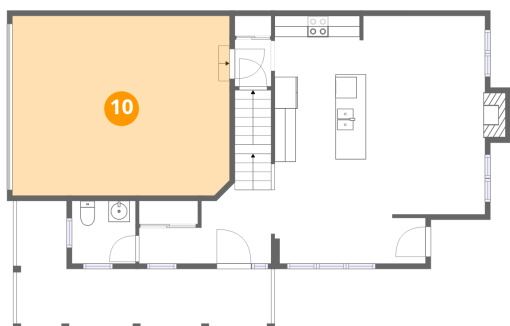
9 Floor 2 - Dining Area



Dimensions: 14'2" x 9'5"
Area: 118 sq. ft
Counted as living area: Yes

Heated: Yes
Finished: Yes
Enclosed: Yes
Contiguous: Yes
Permitted: Yes
Wet space: No
Addition: No
Conversion: No

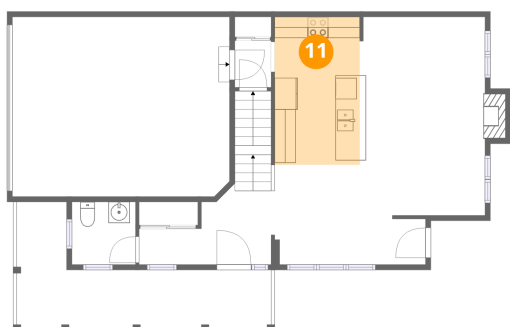
10 Floor 2 - Garage



Dimensions: 20'5" x 16'11"
Area: 345 sq. ft
Counted as living area: No

Heated: No
Finished: No
Enclosed: Yes
Contiguous: Yes
Permitted: Yes
Wet space: No
Addition: No
Conversion: No

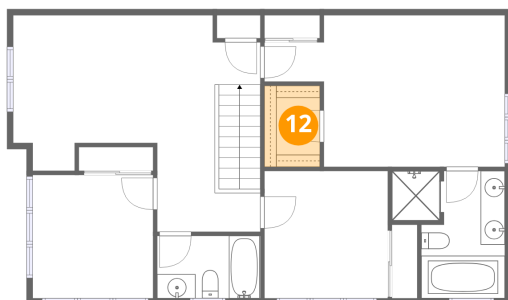
11 Floor 2 - Kitchen



Dimensions: 8'0" x 13'10"
Area: 112 sq. ft
Counted as living area: Yes

Heated: Yes
Finished: Yes
Enclosed: Yes
Contiguous: Yes
Permitted: Yes
Wet space: No
Addition: No
Conversion: No

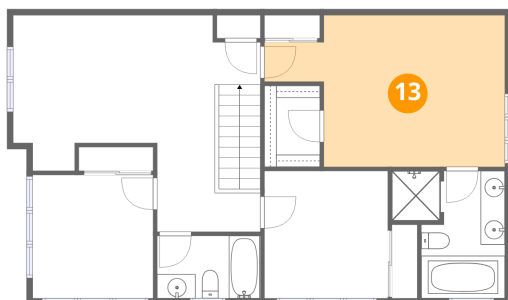
12 Floor 3 - W.I.C.



Dimensions: 4'6" x 6'8"
Area: 31 sq. ft
Counted as living area: Yes

Heated: Yes
Finished: Yes
Enclosed: Yes
Contiguous: Yes
Permitted: Yes
Wet space: No
Addition: No
Conversion: No

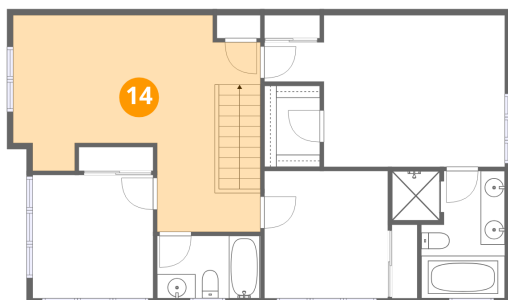
13 Floor 3 - Primary Bedroom



Dimensions: 19'10" x 12'6"
Area: 202 sq. ft
Counted as living area: Yes

Heated: Yes
Finished: Yes
Enclosed: Yes
Contiguous: Yes
Permitted: Yes
Wet space: No
Addition: No
Conversion: No

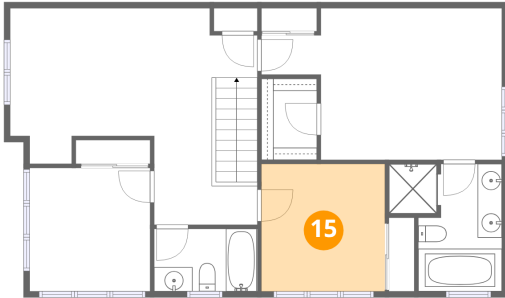
14 Floor 3 - Family Room



Dimensions: 20'4" x 17'10"
Area: 276 sq. ft
Counted as living area: Yes

Heated: Yes
Finished: Yes
Enclosed: Yes
Contiguous: Yes
Permitted: Yes
Wet space: No
Addition: No
Conversion: No

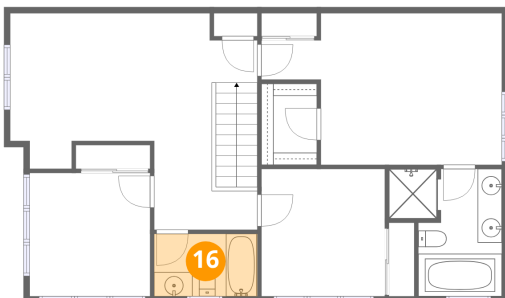
15 Floor 3 - Bedroom



Dimensions: 10'2" x 10'6"
Area: 107 sq. ft
Counted as living area: Yes

Heated: Yes
Finished: Yes
Enclosed: Yes
Contiguous: Yes
Permitted: Yes
Wet space: No
Addition: No
Conversion: No

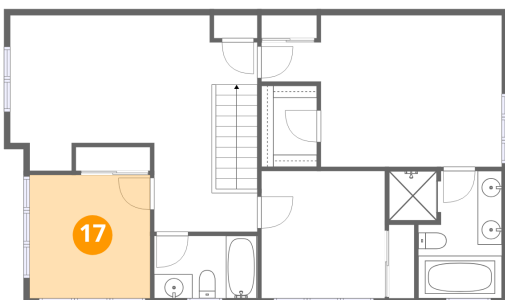
16 Floor 3 - Bath



Dimensions: 8'6" x 5'2"
Area: 44 sq. ft
Counted as living area: Yes

Heated: Yes
Finished: Yes
Enclosed: Yes
Contiguous: Yes
Permitted: Yes
Wet space: Yes
Addition: No
Conversion: No

17 Floor 3 - Bedroom

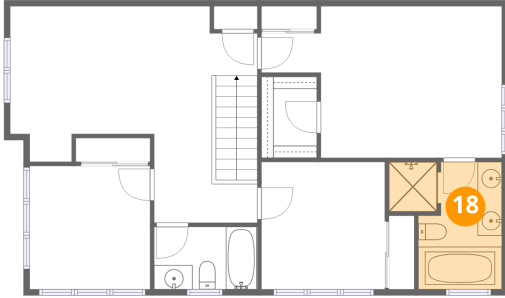


Dimensions: 9'11" x 10'2"
Area: 101 sq. ft
Counted as living area: Yes

Heated: Yes
Finished: Yes
Enclosed: Yes
Contiguous: Yes
Permitted: Yes
Wet space: No
Addition: No
Conversion: No

213 Soldats-Riendeau Street, Stonebridge, Nepean, Ontario,
Canada, K2J 5Z4

18 Floor 3 - Primary Bath



Dimensions: 9'4" x 10'6"
Area: 81 sq. ft
Counted as living area: Yes

Heated: Yes
Finished: Yes
Enclosed: Yes
Contiguous: Yes
Permitted: Yes
Wet space: Yes
Addition: No
Conversion: No