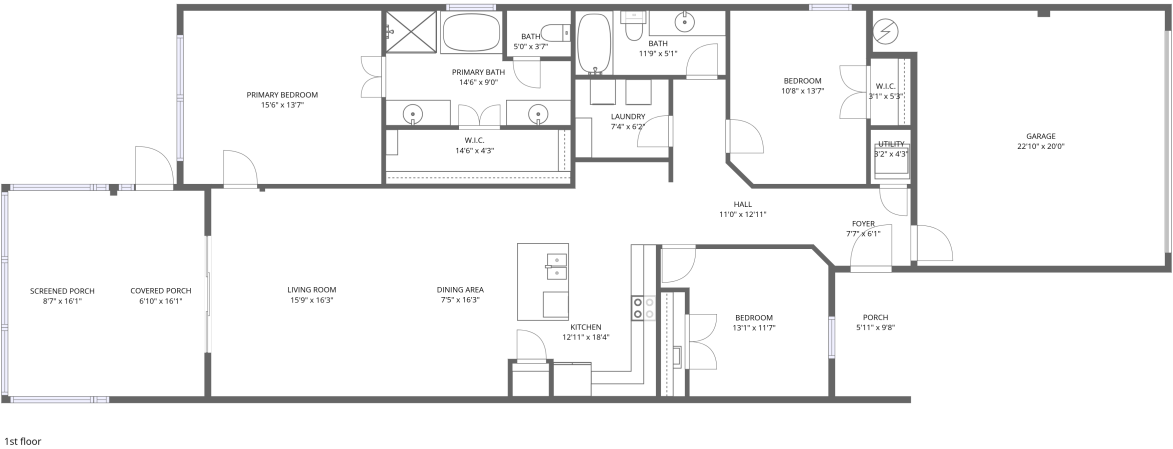


Home data report

2150 Parrot Fish Drive, Sand Bay, Holiday, Pasco County,
Florida, United States, 34691



Total Area: 1602 sq. ft

1st Floor: 1602 sq. ft

Excluded: Porch 58 sq. ft, Screened porch 138 sq. ft, Covered porch 110 sq. ft, Garage 398 sq. ft, Walls: 146 sq. ft

Property summary

 **1** Floors

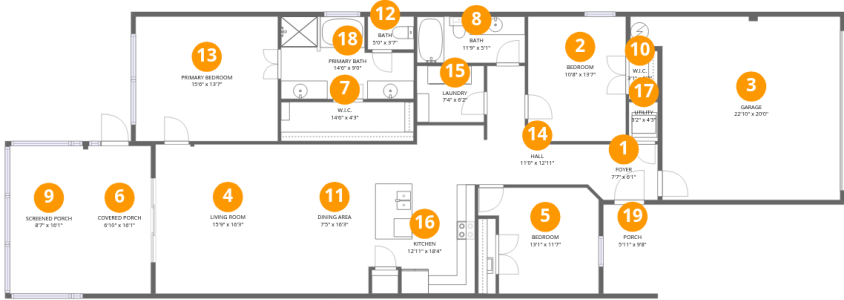
 **3** Bedrooms

 **2** Bathrooms

 **1** Garages

Home data report

2150 Parrot Fish Drive, Sand Bay, Holiday, Pasco County,
Florida, United States, 34691



Room dimensions

Floor 1 Total:1602sqft Excluded: 704sqft

| # | | Dimensions | sqft | Counted as living area |
|----|----------------|----------------|------------|------------------------|
| 1 | Foyer | 7'7" x 6'1" | 45 sq. ft | Yes |
| 2 | Bedroom | 10'8" x 13'7" | 143 sq. ft | Yes |
| 3 | Garage | 22'10" x 20'0" | 398 sq. ft | No |
| 4 | Living Room | 15'9" x 16'3" | 257 sq. ft | Yes |
| 5 | Bedroom | 13'1" x 11'7" | 132 sq. ft | Yes |
| 6 | Covered Porch | 6'10" x 16'1" | 110 sq. ft | No |
| 7 | W.I.C. | 14'6" x 4'3" | 62 sq. ft | Yes |
| 8 | Bath | 11'9" x 5'1" | 59 sq. ft | Yes |
| 9 | Screened Porch | 8'7" x 16'1" | 138 sq. ft | No |
| 10 | W.I.C. | 3'1" x 5'3" | 16 sq. ft | Yes |
| 11 | Dining Area | 7'5" x 16'3" | 121 sq. ft | Yes |

Home data report

**2150 Parrot Fish Drive, Sand Bay, Holiday, Pasco County,
Florida, United States, 34691**

| # | | Dimensions | sqft | Counted as living area |
|----|-----------------|----------------|------------|------------------------|
| 12 | Bath | 5'0" x 3'7" | 18 sq. ft | Yes |
| 13 | Primary Bedroom | 15'6" x 13'7" | 210 sq. ft | Yes |
| 14 | Hall | 11'0" x 12'11" | 86 sq. ft | Yes |
| 15 | Laundry | 7'4" x 6'2" | 45 sq. ft | Yes |
| 16 | Kitchen | 12'11" x 18'4" | 199 sq. ft | Yes |
| 17 | Utility | 3'2" x 4'3" | 13 sq. ft | Yes |
| 18 | Primary Bath | 14'6" x 9'0" | 109 sq. ft | Yes |
| 19 | Porch | 5'11" x 9'8" | 58 sq. ft | No |

1 Floor 1 - Foyer



Dimensions: 7'7" x 6'1"
Area: 45 sq. ft
Counted as living area: Yes

Heated: Yes
Finished: Yes
Enclosed: Yes
Contiguous: Yes
Permitted: Yes
Wet space: No
Addition: No
Conversion: No

2 Floor 1 - Bedroom



Dimensions: 10'8" x 13'7"
Area: 143 sq. ft
Counted as living area: Yes

Heated: Yes
Finished: Yes
Enclosed: Yes
Contiguous: Yes
Permitted: Yes
Wet space: No
Addition: No
Conversion: No

Home data report

2150 Parrot Fish Drive, Sand Bay, Holiday, Pasco County,
Florida, United States, 34691

3 Floor 1 - Garage



Dimensions: 22'10" x 20'0"
Area: 398 sq. ft
Counted as living area: No

Heated: No
Finished: No
Enclosed: Yes
Contiguous: Yes
Permitted: Yes
Wet space: No
Addition: No
Conversion: No

4 Floor 1 - Living Room



Dimensions: 15'9" x 16'3"
Area: 257 sq. ft
Counted as living area: Yes

Heated: Yes
Finished: Yes
Enclosed: Yes
Contiguous: Yes
Permitted: Yes
Wet space: No
Addition: No
Conversion: No

5 Floor 1 - Bedroom



Dimensions: 13'1" x 11'7"
Area: 132 sq. ft
Counted as living area: Yes

Heated: Yes
Finished: Yes
Enclosed: Yes
Contiguous: Yes
Permitted: Yes
Wet space: No
Addition: No
Conversion: No

Home data report

2150 Parrot Fish Drive, Sand Bay, Holiday, Pasco County,
Florida, United States, 34691

6 Floor 1 - Covered Porch



Dimensions: 6'10" x 16'1"
Area: 110 sq. ft
Counted as living area: No

Heated: No
Finished: No
Enclosed: No
Contiguous: Yes
Permitted: Yes
Wet space: No
Addition: No
Conversion: No

7 Floor 1 - W.I.C.



Dimensions: 14'6" x 4'3"
Area: 62 sq. ft
Counted as living area: Yes

Heated: Yes
Finished: Yes
Enclosed: Yes
Contiguous: Yes
Permitted: Yes
Wet space: No
Addition: No
Conversion: No

8 Floor 1 - Bath



Dimensions: 11'9" x 5'1"
Area: 59 sq. ft
Counted as living area: Yes

Heated: Yes
Finished: Yes
Enclosed: Yes
Contiguous: Yes
Permitted: Yes
Wet space: Yes
Addition: No
Conversion: No

9 Floor 1 - Screened Porch



Dimensions: 8'7" x 16'1"
Area: 138 sq. ft
Counted as living area: No

Heated: No
Finished: No
Enclosed: No
Contiguous: Yes
Permitted: Yes
Wet space: No
Addition: No
Conversion: No

10 Floor 1 - W.I.C.



Dimensions: 3'1" x 5'3"
Area: 16 sq. ft
Counted as living area: Yes

Heated: Yes
Finished: Yes
Enclosed: Yes
Contiguous: Yes
Permitted: Yes
Wet space: No
Addition: No
Conversion: No

11 Floor 1 - Dining Area



Dimensions: 7'5" x 16'3"
Area: 121 sq. ft
Counted as living area: Yes

Heated: Yes
Finished: Yes
Enclosed: Yes
Contiguous: Yes
Permitted: Yes
Wet space: No
Addition: No
Conversion: No

12 Floor 1 - Bath



Dimensions: 5'0" x 3'7"
Area: 18 sq. ft
Counted as living area: Yes

Heated: Yes
Finished: Yes
Enclosed: Yes
Contiguous: Yes
Permitted: Yes
Wet space: Yes
Addition: No
Conversion: No

13 Floor 1 - Primary Bedroom



Dimensions: 15'6" x 13'7"
Area: 210 sq. ft
Counted as living area: Yes

Heated: Yes
Finished: Yes
Enclosed: Yes
Contiguous: Yes
Permitted: Yes
Wet space: No
Addition: No
Conversion: No

14 Floor 1 - Hall



Dimensions: 11'0" x 12'11"
Area: 86 sq. ft
Counted as living area: Yes

Heated: Yes
Finished: Yes
Enclosed: Yes
Contiguous: Yes
Permitted: Yes
Wet space: No
Addition: No
Conversion: No

Home data report

2150 Parrot Fish Drive, Sand Bay, Holiday, Pasco County,
Florida, United States, 34691

15 Floor 1 - Laundry



Dimensions: 7'4" x 6'2"
Area: 45 sq. ft
Counted as living area: Yes

Heated: Yes
Finished: Yes
Enclosed: Yes
Contiguous: Yes
Permitted: Yes
Wet space: No
Addition: No
Conversion: No

16 Floor 1 - Kitchen



Dimensions: 12'11" x 18'4"
Area: 199 sq. ft
Counted as living area: Yes

Heated: Yes
Finished: Yes
Enclosed: Yes
Contiguous: Yes
Permitted: Yes
Wet space: No
Addition: No
Conversion: No

17 Floor 1 - Utility



Dimensions: 3'2" x 4'3"
Area: 13 sq. ft
Counted as living area: Yes

Heated: Yes
Finished: Yes
Enclosed: Yes
Contiguous: Yes
Permitted: Yes
Wet space: No
Addition: No
Conversion: No

18 Floor 1 - Primary Bath



Dimensions: 14'6" x 9'0"
Area: 109 sq. ft
Counted as living area: Yes

Heated: Yes
Finished: Yes
Enclosed: Yes
Contiguous: Yes
Permitted: Yes
Wet space: Yes
Addition: No
Conversion: No

19 Floor 1 - Porch



Dimensions: 5'11" x 9'8"
Area: 58 sq. ft
Counted as living area: No

Heated: No
Finished: No
Enclosed: No
Contiguous: Yes
Permitted: Yes
Wet space: No
Addition: No
Conversion: No