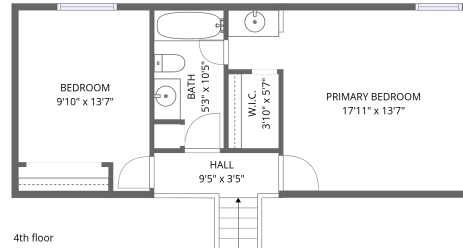
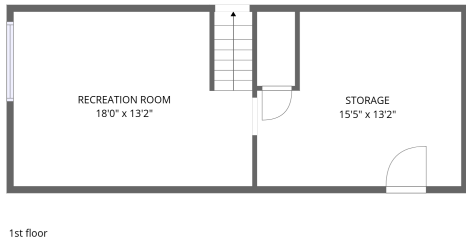
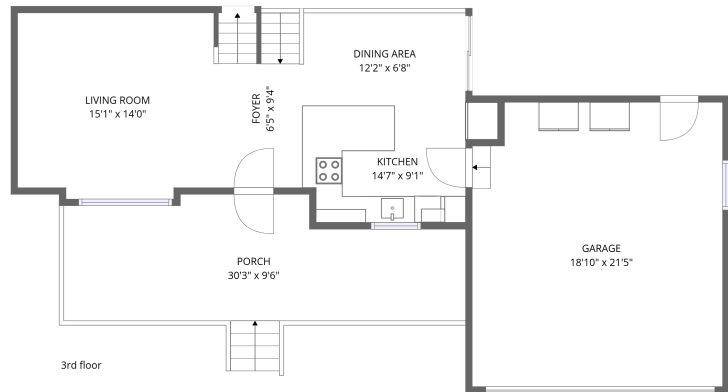
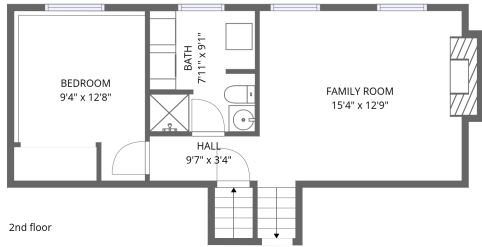


Home data report

2524 Plainview Rd, Cheyenne, CO, US

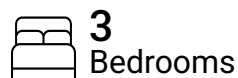


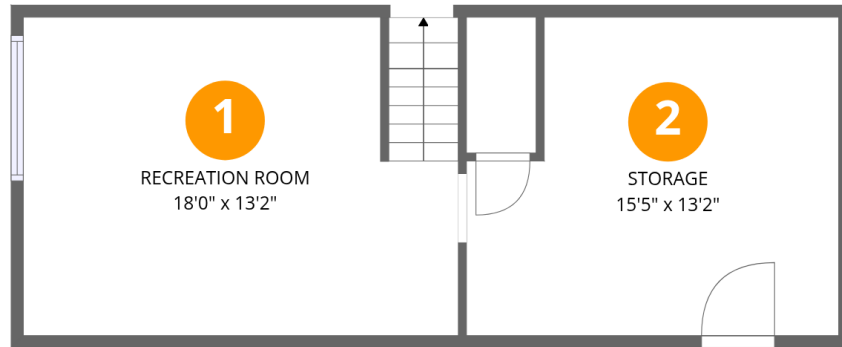
Total Area: 1683 sq. ft

1st Floor: 260 sq. ft, 2nd Floor: 465 sq. ft, 3rd Floor: 486 sq. ft, 4th Floor: 472 sq. ft

Excluded: Storage 183 sq. ft, Garage 395 sq. ft, Porch 263 sq. ft, Walls: 223 sq. ft

Property summary





Room dimensions

Floor 1

Total:260sqft

Excluded: 183sqft

#		Dimensions	sqft	Counted as living area
1	Recreation Room	18'0" x 13'2"	236 sq. ft	Yes
2	Storage	15'5" x 13'2"	202 sq. ft	No

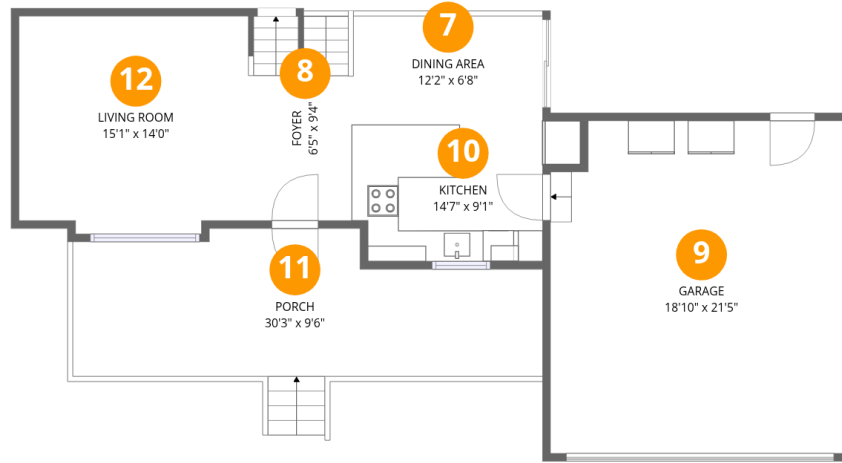


Room dimensions

Floor 2

Total:465sqft Excluded: 0sqft

#		Dimensions	sqft	Counted as living area
3	Hall	9'7" x 3'4"	32 sq. ft	Yes
4	Family Room	15'4" x 12'9"	195 sq. ft	Yes
5	Bedroom	9'4" x 12'8"	118 sq. ft	Yes
6	Bath	7'11" x 9'1"	72 sq. ft	Yes



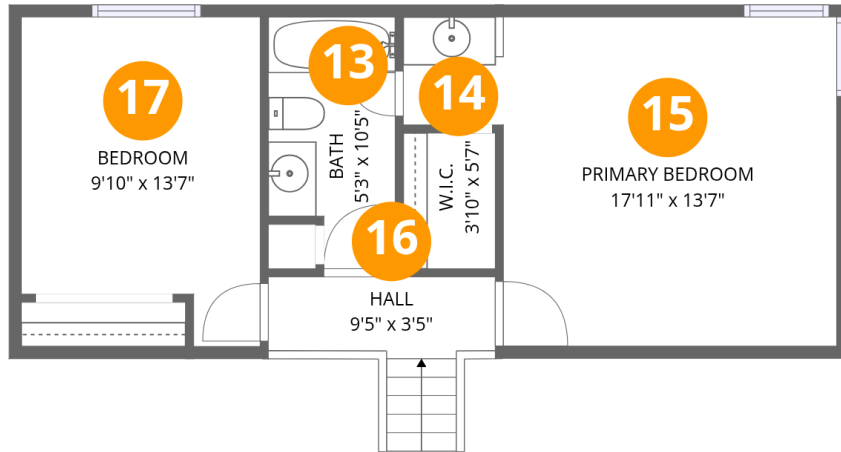
Room dimensions

Floor 3

Total: 486 sqft

Excluded: 658 sqft

#		Dimensions	sqft	Counted as living area
7	Dining Area	12'2" x 6'8"	81 sq. ft	Yes
8	Foyer	6'5" x 9'4"	60 sq. ft	Yes
9	Garage	18'10" x 21'5"	402 sq. ft	No
10	Kitchen	14'7" x 9'1"	132 sq. ft	Yes
11	Porch	30'3" x 9'6"	287 sq. ft	No
12	Living Room	15'1" x 14'0"	211 sq. ft	Yes



Room dimensions

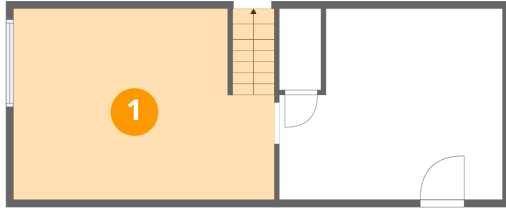
Floor 4

Total:472sqft

Excluded: 0sqft

#		Dimensions	sqft	Counted as living area
13	Bath	5'3" x 10'5"	55 sq. ft	Yes
14	W.I.C.	3'10" x 5'7"	21 sq. ft	Yes
15	Primary Bedroom	17'11" x 13'7"	243 sq. ft	Yes
16	Hall	9'5" x 3'5"	32 sq. ft	Yes
17	Bedroom	9'10" x 13'7"	134 sq. ft	Yes

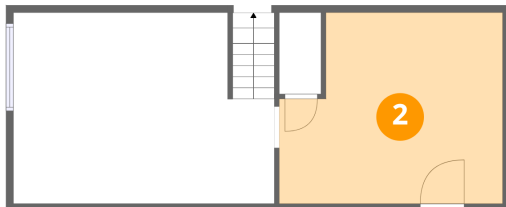
1 Floor 1 - Recreation Room



Dimensions: 18'0" x 13'2"
Area: 236 sq. ft
Counted as living area: Yes

Heated: Yes
Finished: Yes
Enclosed: Yes
Contiguous: Yes
Permitted: Yes
Wet space: No
Addition: No
Conversion: No

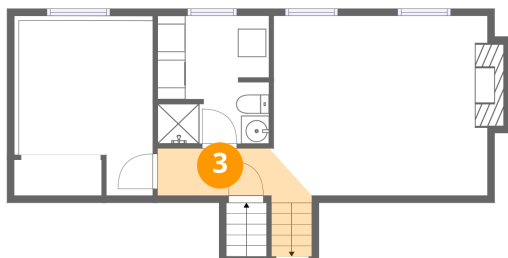
2 Floor 1 - Storage



Dimensions: 15'5" x 13'2"
Area: 202 sq. ft
Counted as living area: No

Heated: No
Finished: Yes
Enclosed: No
Contiguous: Yes
Permitted: Yes
Wet space: No
Addition: No
Conversion: No

3 Floor 2 - Hall



Dimensions: 9'7" x 3'4"
Area: 32 sq. ft
Counted as living area: Yes

Heated: Yes
Finished: Yes
Enclosed: Yes
Contiguous: Yes
Permitted: Yes
Wet space: No
Addition: No
Conversion: No

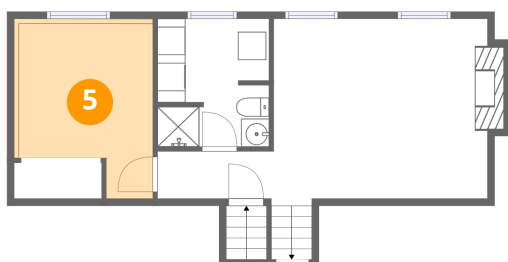
4 Floor 2 - Family Room



Dimensions: 15'4" x 12'9"
Area: 195 sq. ft
Counted as living area: Yes

Heated: Yes
Finished: Yes
Enclosed: Yes
Contiguous: Yes
Permitted: Yes
Wet space: No
Addition: No
Conversion: No

5 Floor 2 - Bedroom



Dimensions: 9'4" x 12'8"
Area: 118 sq. ft
Counted as living area: Yes

Heated: Yes
Finished: Yes
Enclosed: Yes
Contiguous: Yes
Permitted: Yes
Wet space: No
Addition: No
Conversion: No

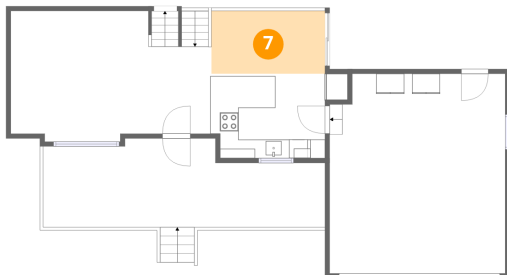
6 Floor 2 - Bath



Dimensions: 7'11" x 9'1"
Area: 72 sq. ft
Counted as living area: Yes

Heated: Yes
Finished: Yes
Enclosed: Yes
Contiguous: Yes
Permitted: Yes
Wet space: Yes
Addition: No
Conversion: No

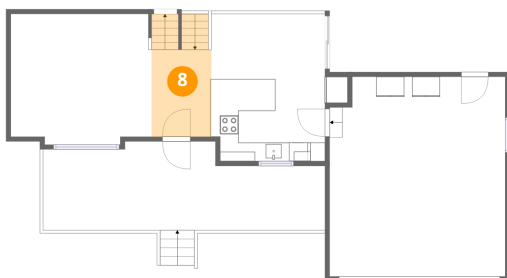
7 Floor 3 - Dining Area



Dimensions: 12'2" x 6'8"
Area: 81 sq. ft
Counted as living area: Yes

Heated: Yes
Finished: Yes
Enclosed: Yes
Contiguous: Yes
Permitted: Yes
Wet space: No
Addition: No
Conversion: No

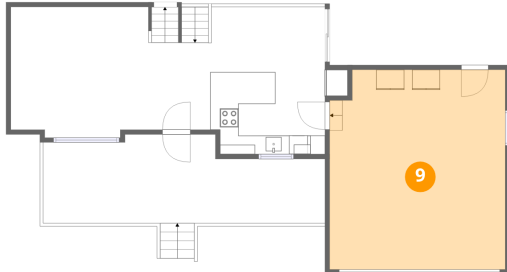
8 Floor 3 - Foyer



Dimensions: 6'5" x 9'4"
Area: 60 sq. ft
Counted as living area: Yes

Heated: Yes
Finished: Yes
Enclosed: Yes
Contiguous: Yes
Permitted: Yes
Wet space: No
Addition: No
Conversion: No

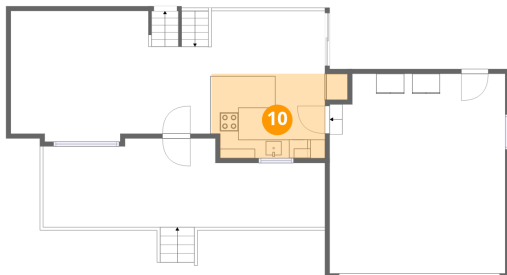
9 Floor 3 - Garage



Dimensions: 18'10" x 21'5"
Area: 402 sq. ft
Counted as living area: No

Heated: No
Finished: No
Enclosed: Yes
Contiguous: Yes
Permitted: Yes
Wet space: No
Addition: No
Conversion: No

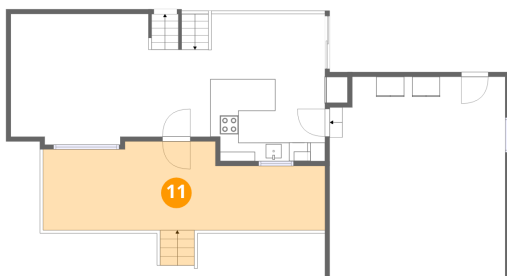
10 Floor 3 - Kitchen



Dimensions: 14'7" x 9'1"
Area: 132 sq. ft
Counted as living area: Yes

Heated: Yes
Finished: Yes
Enclosed: Yes
Contiguous: Yes
Permitted: Yes
Wet space: No
Addition: No
Conversion: No

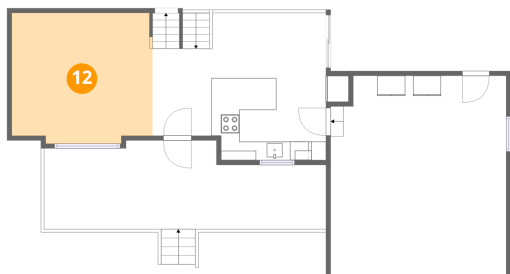
11 Floor 3 - Porch



Dimensions: 30'3" x 9'6"
Area: 287 sq. ft
Counted as living area: No

Heated: No
Finished: No
Enclosed: No
Contiguous: Yes
Permitted: Yes
Wet space: No
Addition: No
Conversion: No

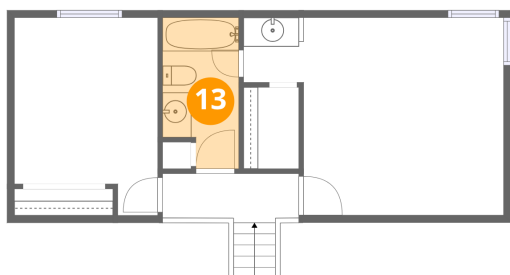
12 Floor 3 - Living Room



Dimensions: 15'1" x 14'0"
Area: 211 sq. ft
Counted as living area: Yes

Heated: Yes
Finished: Yes
Enclosed: Yes
Contiguous: Yes
Permitted: Yes
Wet space: No
Addition: No
Conversion: No

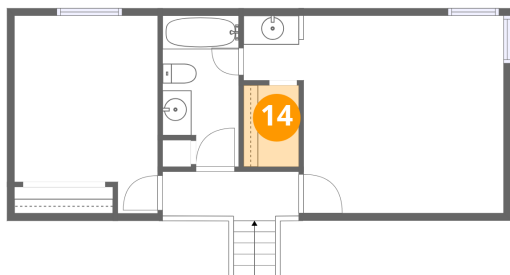
13 Floor 4 - Bath



Dimensions: 5'3" x 10'5"
Area: 55 sq. ft
Counted as living area: Yes

Heated: Yes
Finished: Yes
Enclosed: Yes
Contiguous: Yes
Permitted: Yes
Wet space: Yes
Addition: No
Conversion: No

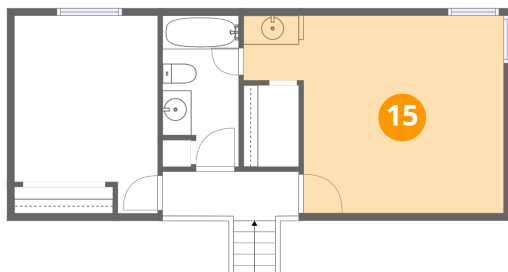
14 Floor 4 - W.I.C.



Dimensions: 3'10" x 5'7"
Area: 21 sq. ft
Counted as living area: Yes

Heated: Yes
Finished: Yes
Enclosed: Yes
Contiguous: Yes
Permitted: Yes
Wet space: No
Addition: No
Conversion: No

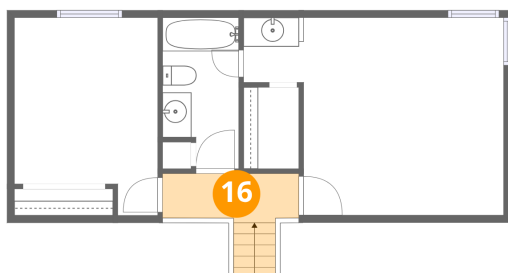
15 Floor 4 - Primary Bedroom



Dimensions: 17'11" x 13'7"
Area: 243 sq. ft
Counted as living area: Yes

Heated: Yes
Finished: Yes
Enclosed: Yes
Contiguous: Yes
Permitted: Yes
Wet space: No
Addition: No
Conversion: No

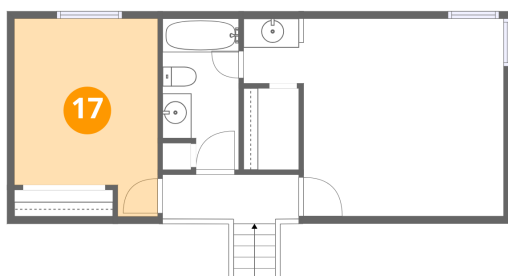
16 Floor 4 - Hall



Dimensions: 9'5" x 3'5"
Area: 32 sq. ft
Counted as living area: Yes

Heated: Yes
Finished: Yes
Enclosed: Yes
Contiguous: Yes
Permitted: Yes
Wet space: No
Addition: No
Conversion: No

17 Floor 4 - Bedroom



Dimensions: 9'10" x 13'7"
Area: 134 sq. ft
Counted as living area: Yes

Heated: Yes
Finished: Yes
Enclosed: Yes
Contiguous: Yes
Permitted: Yes
Wet space: No
Addition: No
Conversion: No