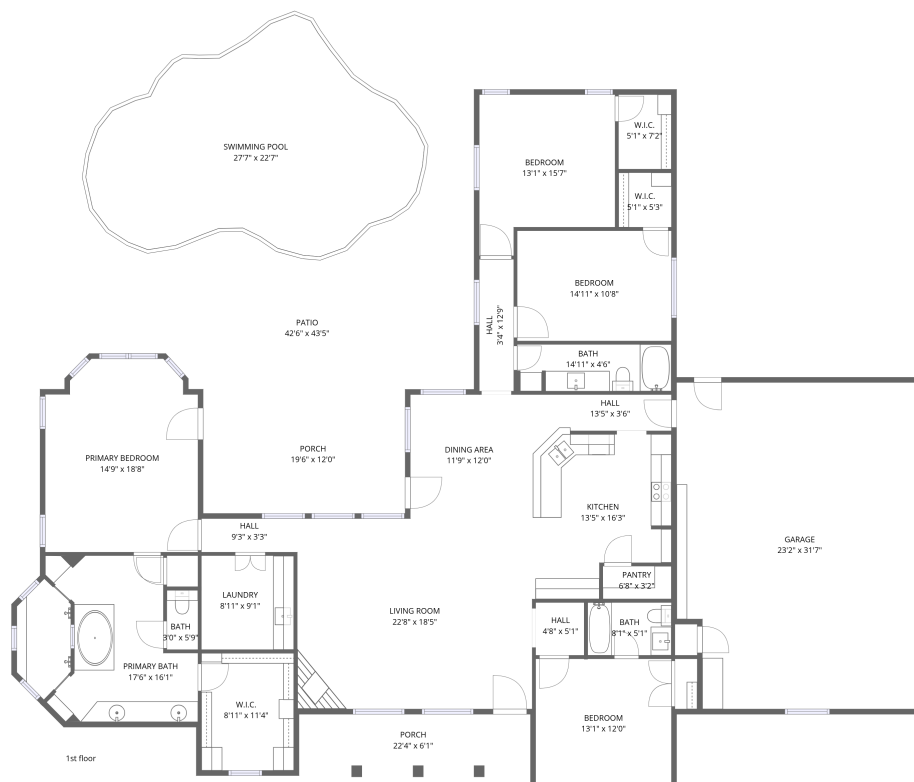


Home data report

7240 Edgerton Drive, Midlothian, Ellis County, Texas, United States, 76065



Total Area: 2365 sq. ft

1st Floor: 2365 sq. ft

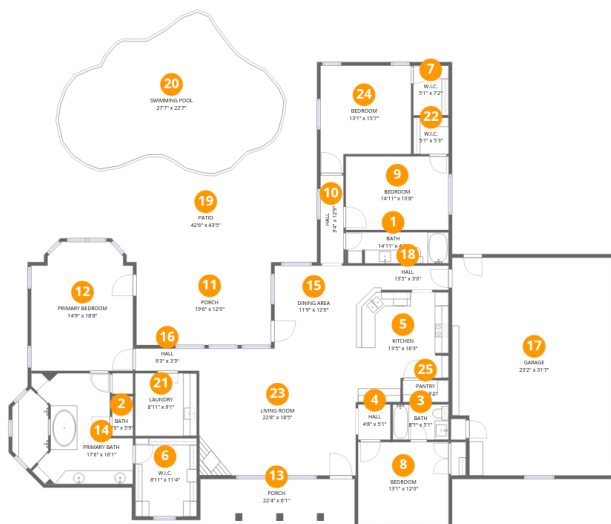
Excluded: Porch 370 sq. ft, Patio 1024 sq. ft, Garage 717 sq. ft, Walls: 189 sq. ft

Property summary



Home data report

7240 Edgerton Drive, Midlothian, Ellis County, Texas, United States, 76065



Room dimensions

Floor 1

Total:2365sqft

Excluded: 2111sqft

#		Dimensions	sqft	Counted as living area
1	Bath	14'11" x 4'6"	67 sq. ft	Yes
2	Bath	3'0" x 5'9"	17 sq. ft	Yes
3	Bath	8'1" x 5'1"	41 sq. ft	Yes
4	Hall	4'8" x 5'1"	24 sq. ft	Yes
5	Kitchen	13'5" x 16'3"	219 sq. ft	Yes
6	W.I.C.	8'11" x 11'4"	101 sq. ft	Yes
7	W.I.C.	5'1" x 7'2"	37 sq. ft	Yes
8	Bedroom	13'1" x 12'0"	156 sq. ft	Yes
9	Bedroom	14'11" x 10'8"	159 sq. ft	Yes
10	Hall	3'4" x 12'9"	42 sq. ft	Yes
11	Porch	19'6" x 12'0"	234 sq. ft	No

Home data report

7240 Edgerton Drive, Midlothian, Ellis County, Texas, United States, 76065

#		Dimensions	sqft	Counted as living area
12	Primary Bedroom	14'9" x 18'8"	276 sq. ft	Yes
13	Porch	22'4" x 6'1"	136 sq. ft	No
14	Primary Bath	17'6" x 16'1"	281 sq. ft	Yes
15	Dining Area	11'9" x 12'0"	141 sq. ft	Yes
16	Hall	9'3" x 3'3"	30 sq. ft	Yes
17	Garage	23'2" x 31'7"	731 sq. ft	No
18	Hall	13'5" x 3'6"	47 sq. ft	Yes
19	Patio	42'6" x 43'5"	1844 sq. ft	No
20	Swimming Pool	27'7" x 22'7"	624 sq. ft	No
21	Laundry	8'11" x 9'1"	81 sq. ft	Yes
22	W.I.C.	5'1" x 5'3"	27 sq. ft	Yes
23	Living Room	22'8" x 18'5"	417 sq. ft	Yes
24	Bedroom	13'1" x 15'7"	204 sq. ft	Yes
25	Pantry	6'8" x 3'2"	21 sq. ft	Yes

1 Floor 1 - Bath



Dimensions: 14'11" x 4'6"
Area: 67 sq. ft
Counted as living area: Yes

Heated: Yes
Finished: Yes
Enclosed: Yes
Contiguous: Yes
Permitted: Yes
Wet space: Yes
Addition: No
Conversion: No

2 Floor 1 - Bath



Dimensions: 3'0" x 5'9"
Area: 17 sq. ft
Counted as living area: Yes

Heated: Yes
Finished: Yes
Enclosed: Yes
Contiguous: Yes
Permitted: Yes
Wet space: Yes
Addition: No
Conversion: No

3 Floor 1 - Bath



Dimensions: 8'1" x 5'1"
Area: 41 sq. ft
Counted as living area: Yes

Heated: Yes
Finished: Yes
Enclosed: Yes
Contiguous: Yes
Permitted: Yes
Wet space: Yes
Addition: No
Conversion: No

4 Floor 1 - Hall



Dimensions: 4'8" x 5'1"
Area: 24 sq. ft
Counted as living area: Yes

Heated: Yes
Finished: Yes
Enclosed: Yes
Contiguous: Yes
Permitted: Yes
Wet space: No
Addition: No
Conversion: No

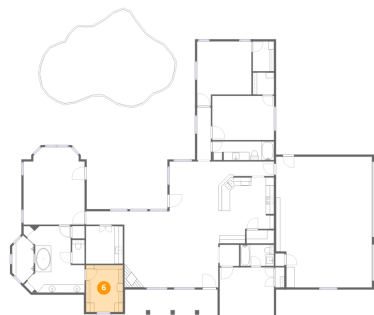
5 Floor 1 - Kitchen



Dimensions: 13'5" x 16'3"
Area: 219 sq. ft
Counted as living area: Yes

Heated: Yes
Finished: Yes
Enclosed: Yes
Contiguous: Yes
Permitted: Yes
Wet space: No
Addition: No
Conversion: No

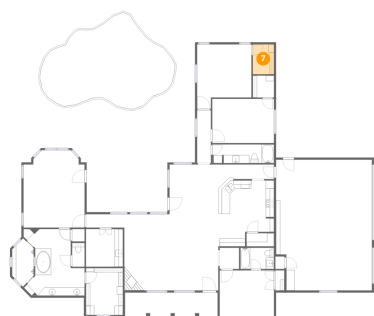
6 Floor 1 - W.I.C.



Dimensions: 8'11" x 11'4"
Area: 101 sq. ft
Counted as living area: Yes

Heated: Yes
Finished: Yes
Enclosed: Yes
Contiguous: Yes
Permitted: Yes
Wet space: No
Addition: No
Conversion: No

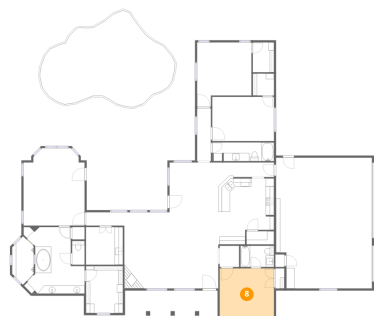
7 Floor 1 - W.I.C.



Dimensions: 5'1" x 7'2"
Area: 37 sq. ft
Counted as living area: Yes

Heated: Yes
Finished: Yes
Enclosed: Yes
Contiguous: Yes
Permitted: Yes
Wet space: No
Addition: No
Conversion: No

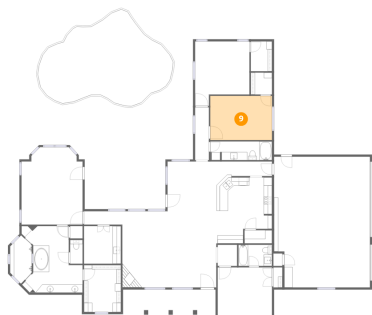
8 Floor 1 - Bedroom



Dimensions: 13'1" x 12'0"
Area: 156 sq. ft
Counted as living area: Yes

Heated: Yes
Finished: Yes
Enclosed: Yes
Contiguous: Yes
Permitted: Yes
Wet space: No
Addition: No
Conversion: No

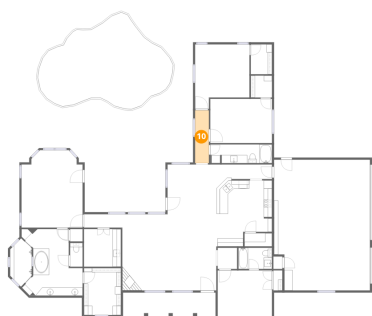
9 Floor 1 - Bedroom



Dimensions: 14'11" x 10'8"
Area: 159 sq. ft
Counted as living area: Yes

Heated: Yes
Finished: Yes
Enclosed: Yes
Contiguous: Yes
Permitted: Yes
Wet space: No
Addition: No
Conversion: No

10 Floor 1 - Hall



Dimensions: 3'4" x 12'9"
Area: 42 sq. ft
Counted as living area: Yes

Heated: Yes
Finished: Yes
Enclosed: Yes
Contiguous: Yes
Permitted: Yes
Wet space: No
Addition: No
Conversion: No

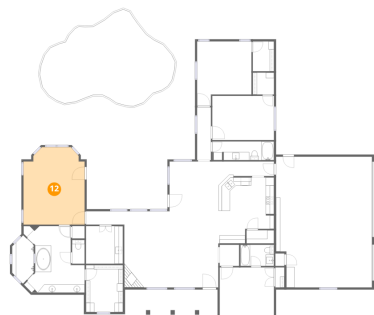
11 Floor 1 - Porch



Dimensions: 19'6" x 12'0"
Area: 234 sq. ft
Counted as living area: No

Heated: No
Finished: No
Enclosed: No
Contiguous: Yes
Permitted: Yes
Wet space: No
Addition: No
Conversion: No

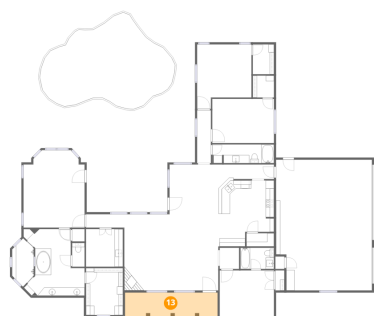
12 Floor 1 - Primary Bedroom



Dimensions: 14'9" x 18'8"
Area: 276 sq. ft
Counted as living area: Yes

Heated: Yes
Finished: Yes
Enclosed: Yes
Contiguous: Yes
Permitted: Yes
Wet space: No
Addition: No
Conversion: No

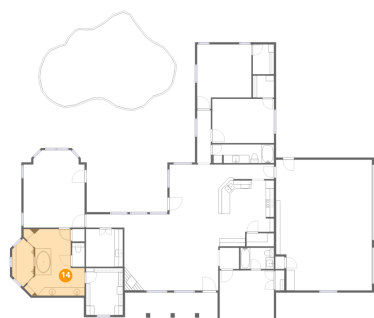
13 Floor 1 - Porch



Dimensions: 22'4" x 6'1"
Area: 136 sq. ft
Counted as living area: No

Heated: No
Finished: No
Enclosed: No
Contiguous: Yes
Permitted: Yes
Wet space: No
Addition: No
Conversion: No

14 Floor 1 - Primary Bath



Dimensions: 17'6" x 16'1"
Area: 281 sq. ft
Counted as living area: Yes

Heated: Yes
Finished: Yes
Enclosed: Yes
Contiguous: Yes
Permitted: Yes
Wet space: Yes
Addition: No
Conversion: No

15 Floor 1 - Dining Area



Dimensions: 11'9" x 12'0"
Area: 141 sq. ft
Counted as living area: Yes

Heated: Yes
Finished: Yes
Enclosed: Yes
Contiguous: Yes
Permitted: Yes
Wet space: No
Addition: No
Conversion: No

16 Floor 1 - Hall



Dimensions: 9'3" x 3'3"
Area: 30 sq. ft
Counted as living area: Yes

Heated: Yes
Finished: Yes
Enclosed: Yes
Contiguous: Yes
Permitted: Yes
Wet space: No
Addition: No
Conversion: No

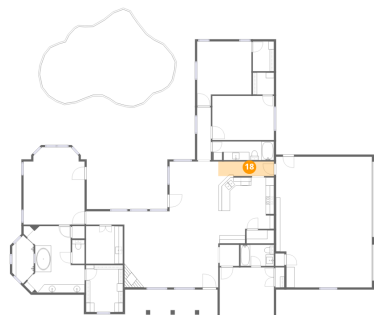
17 Floor 1 - Garage



Dimensions: 23'2" x 31'7"
Area: 731 sq. ft
Counted as living area: No

Heated: No
Finished: No
Enclosed: Yes
Contiguous: Yes
Permitted: Yes
Wet space: No
Addition: No
Conversion: No

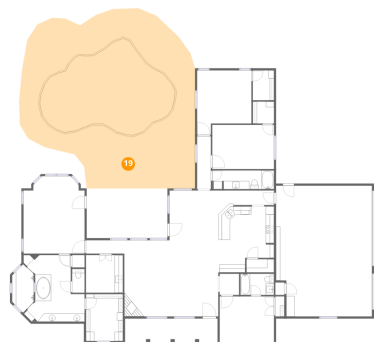
18 Floor 1 - Hall



Dimensions: 13'5" x 3'6"
Area: 47 sq. ft
Counted as living area: Yes

Heated: Yes
Finished: Yes
Enclosed: Yes
Contiguous: Yes
Permitted: Yes
Wet space: No
Addition: No
Conversion: No

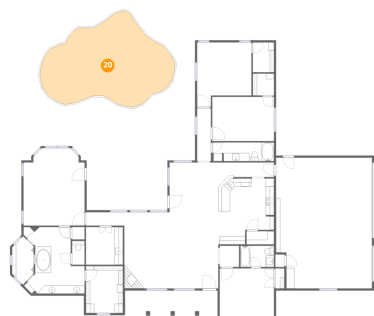
19 Floor 1 - Patio



Dimensions: 42'6" x 43'5"
Area: 1844 sq. ft
Counted as living area: No

Heated: No
Finished: No
Enclosed: No
Contiguous: Yes
Permitted: Yes
Wet space: No
Addition: No
Conversion: No

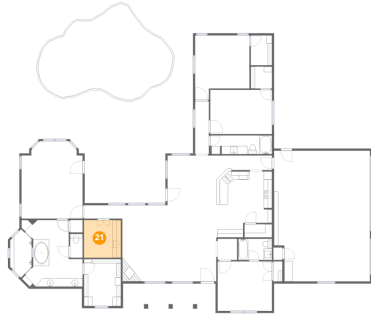
20 Floor 1 - Swimming Pool



Dimensions: 27'7" x 22'7"
Area: 624 sq. ft
Counted as living area: No

Heated: No
Finished: No
Enclosed: No
Contiguous: Yes
Permitted: No
Wet space: No
Addition: No
Conversion: No

21 Floor 1 - Laundry



Dimensions: 8'11" x 9'1"
Area: 81 sq. ft
Counted as living area: Yes

Heated: Yes
Finished: Yes
Enclosed: Yes
Contiguous: Yes
Permitted: Yes
Wet space: No
Addition: No
Conversion: No

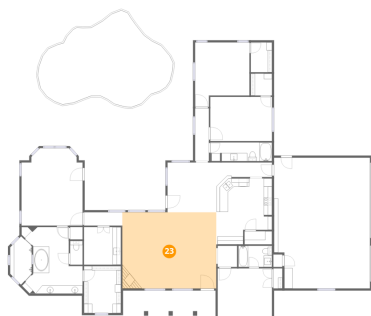
22 Floor 1 - W.I.C.



Dimensions: 5'1" x 5'3"
Area: 27 sq. ft
Counted as living area: Yes

Heated: Yes
Finished: Yes
Enclosed: Yes
Contiguous: Yes
Permitted: Yes
Wet space: No
Addition: No
Conversion: No

23 Floor 1 - Living Room



Dimensions: 22'8" x 18'5"
Area: 417 sq. ft
Counted as living area: Yes

Heated: Yes
Finished: Yes
Enclosed: Yes
Contiguous: Yes
Permitted: Yes
Wet space: No
Addition: No
Conversion: No

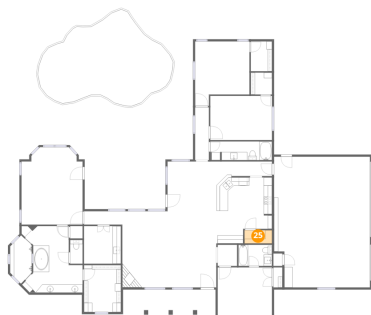
24 Floor 1 - Bedroom



Dimensions: 13'1" x 15'7"
Area: 204 sq. ft
Counted as living area: Yes

Heated: Yes
Finished: Yes
Enclosed: Yes
Contiguous: Yes
Permitted: Yes
Wet space: No
Addition: No
Conversion: No

25 Floor 1 - Pantry



Dimensions: 6'8" x 3'2"
Area: 21 sq. ft
Counted as living area: Yes

Heated: Yes
Finished: Yes
Enclosed: Yes
Contiguous: Yes
Permitted: Yes
Wet space: No
Addition: No
Conversion: No