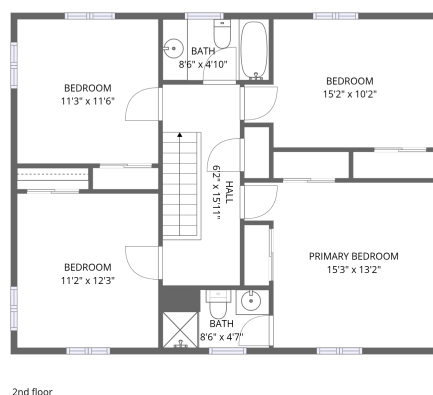


# Home data report

## 2620 N Richard Dr, Shelbyville, IN, US

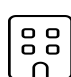


**Total Area: 2102 sq. ft**

1st Floor: 1234 sq. ft, 2nd Floor: 868 sq. ft

Excluded: Garage 508 sq. ft, Porch 170 sq. ft, Deck 1217 sq. ft, Embedded window 26 sq. ft, Fireplace 14 sq. ft, Walls: 172 sq. ft

### Property summary


 **2** Floors

 **5** Bedrooms

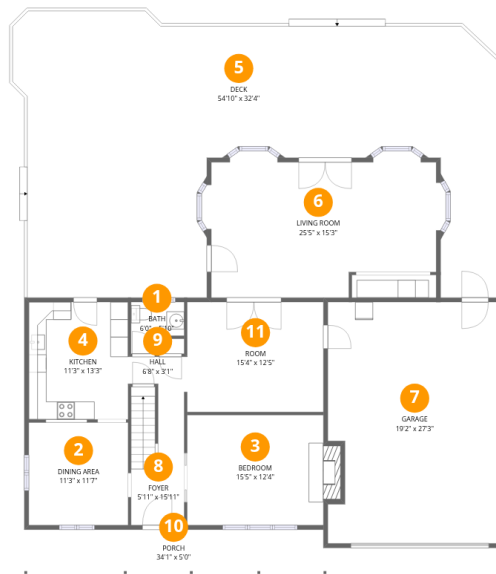
 **2** Bathrooms

Home data report

## 2620 N Richard Dr, Shelbyville, IN, US

 **1**  
Half baths

 **1**  
Garages



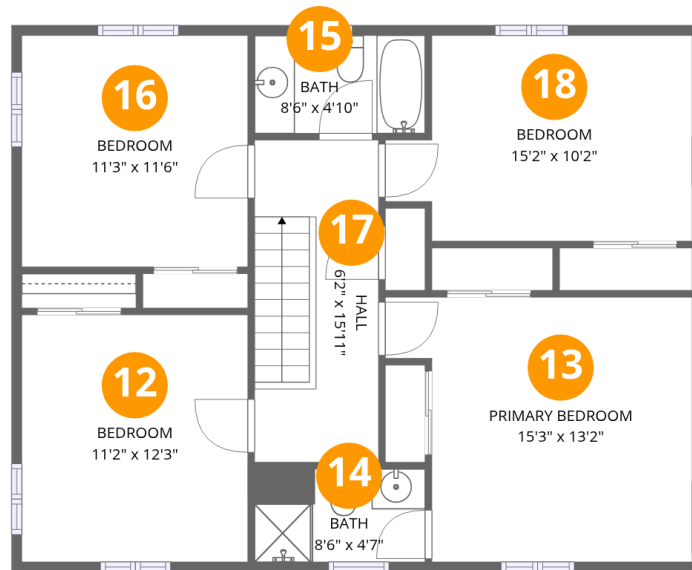
## Room dimensions

Floor 1

Total: 1234sqft

Excluded: 1935sqft

#		Dimensions	sqft	Counted as living area
1	Bath	6'0" x 5'10"	28 sq. ft	Yes
2	Dining Area	11'3" x 11'7"	132 sq. ft	Yes
3	Bedroom	15'5" x 12'4"	203 sq. ft	Yes
4	Kitchen	11'3" x 13'3"	148 sq. ft	Yes
5	Deck	54'10" x 32'4"	1243 sq. ft	No
6	Living Room	25'5" x 15'3"	359 sq. ft	Yes
7	Garage	19'2" x 27'3"	508 sq. ft	No
8	Foyer	5'11" x 15'11"	93 sq. ft	Yes
9	Hall	6'8" x 3'1"	20 sq. ft	Yes
10	Porch	34'1" x 5'0"	170 sq. ft	No
11	Room	15'4" x 12'5"	191 sq. ft	Yes



## Room dimensions

Floor 2

Total: 868 sqft

Excluded: 0 sqft

#		Dimensions	sqft	Counted as living area
12	Bedroom	11'2" x 12'3"	137 sq. ft	Yes
13	Primary Bedroom	15'3" x 13'2"	177 sq. ft	Yes
14	Bath	8'6" x 4'7"	34 sq. ft	Yes
15	Bath	8'6" x 4'10"	41 sq. ft	Yes
16	Bedroom	11'3" x 11'6"	129 sq. ft	Yes
17	Hall	6'2" x 15'11"	98 sq. ft	Yes
18	Bedroom	15'2" x 10'2"	139 sq. ft	Yes

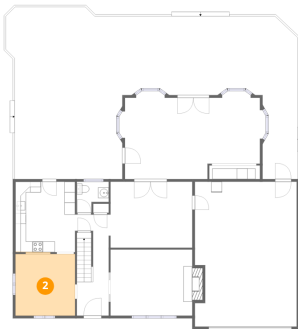
## 1 Floor 1 - Bath



Dimensions: 6'0" x 5'10"  
Area: 28 sq. ft  
Counted as living area: Yes

Heated: Yes  
Finished: Yes  
Enclosed: Yes  
Contiguous: Yes  
Permitted: Yes  
Wet space: Yes  
Addition: No  
Conversion: No

## 2 Floor 1 - Dining Area



Dimensions: 11'3" x 11'7"  
Area: 132 sq. ft  
Counted as living area: Yes

Heated: Yes  
Finished: Yes  
Enclosed: Yes  
Contiguous: Yes  
Permitted: Yes  
Wet space: No  
Addition: No  
Conversion: No

### 3 Floor 1 - Bedroom



Dimensions: 15'5" x 12'4"  
Area: 203 sq. ft  
Counted as living area: Yes

Heated: Yes  
Finished: Yes  
Enclosed: Yes  
Contiguous: Yes  
Permitted: Yes  
Wet space: No  
Addition: No  
Conversion: No

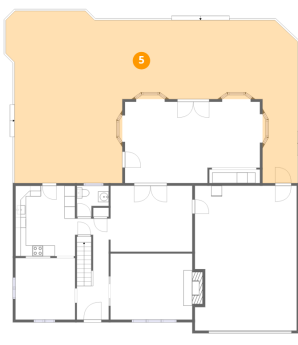
### 4 Floor 1 - Kitchen



Dimensions: 11'3" x 13'3"  
Area: 148 sq. ft  
Counted as living area: Yes

Heated: Yes  
Finished: Yes  
Enclosed: Yes  
Contiguous: Yes  
Permitted: Yes  
Wet space: No  
Addition: No  
Conversion: No

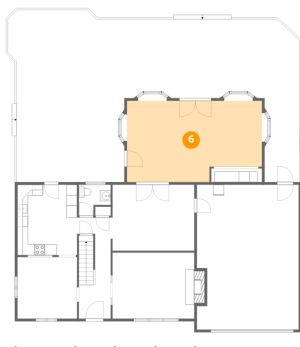
### 5 Floor 1 - Deck



Dimensions: 54'10" x 32'4"  
Area: 1243 sq. ft  
Counted as living area: No

Heated: No  
Finished: No  
Enclosed: No  
Contiguous: Yes  
Permitted: Yes  
Wet space: No  
Addition: No  
Conversion: No

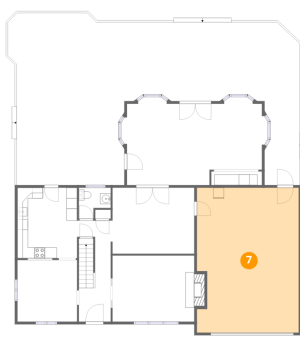
### 6 Floor 1 - Living Room



Dimensions: 25'5" x 15'3"  
Area: 359 sq. ft  
Counted as living area: Yes

Heated: Yes  
Finished: Yes  
Enclosed: Yes  
Contiguous: Yes  
Permitted: Yes  
Wet space: No  
Addition: No  
Conversion: No

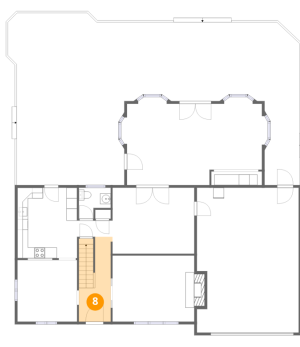
### 7 Floor 1 - Garage



Dimensions: 19'2" x 27'3"  
Area: 508 sq. ft  
Counted as living area: No

Heated: No  
Finished: No  
Enclosed: Yes  
Contiguous: Yes  
Permitted: Yes  
Wet space: No  
Addition: No  
Conversion: No

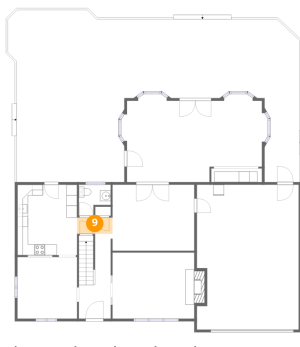
### 8 Floor 1 - Foyer



Dimensions: 5'11" x 15'11"  
Area: 93 sq. ft  
Counted as living area: Yes

Heated: Yes  
Finished: Yes  
Enclosed: Yes  
Contiguous: Yes  
Permitted: Yes  
Wet space: No  
Addition: No  
Conversion: No

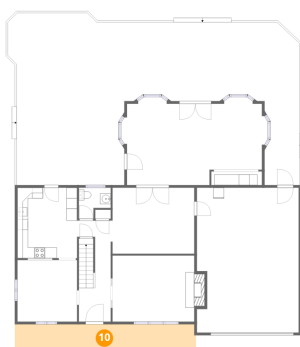
### 9 Floor 1 - Hall



Dimensions: 6'8" x 3'1"  
Area: 20 sq. ft  
Counted as living area: Yes

Heated: Yes  
Finished: Yes  
Enclosed: Yes  
Contiguous: Yes  
Permitted: Yes  
Wet space: No  
Addition: No  
Conversion: No

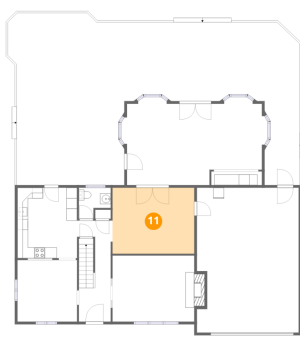
### 10 Floor 1 - Porch



Dimensions: 34'1" x 5'0"  
Area: 170 sq. ft  
Counted as living area: No

Heated: No  
Finished: No  
Enclosed: No  
Contiguous: Yes  
Permitted: Yes  
Wet space: No  
Addition: No  
Conversion: No

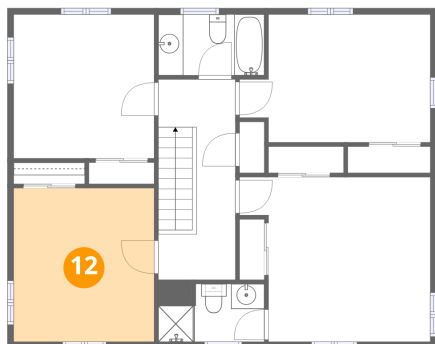
### 11 Floor 1 - Room



Dimensions: 15'4" x 12'5"  
Area: 191 sq. ft  
Counted as living area: Yes

Heated: Yes  
Finished: Yes  
Enclosed: Yes  
Contiguous: Yes  
Permitted: Yes  
Wet space: No  
Addition: No  
Conversion: No

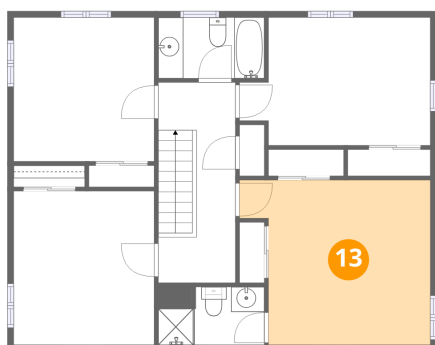
## 12 Floor 2 - Bedroom



Dimensions: 11'2" x 12'3"  
Area: 137 sq. ft  
Counted as living area: Yes

Heated: Yes  
Finished: Yes  
Enclosed: Yes  
Contiguous: Yes  
Permitted: Yes  
Wet space: No  
Addition: No  
Conversion: No

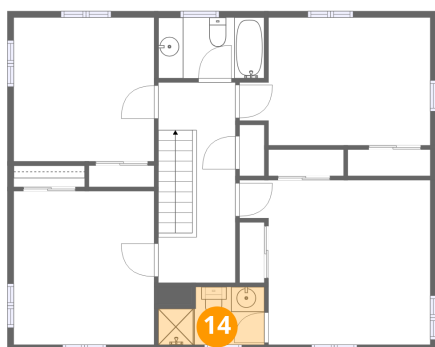
## 13 Floor 2 - Primary Bedroom



Dimensions: 15'3" x 13'2"  
Area: 177 sq. ft  
Counted as living area: Yes

Heated: Yes  
Finished: Yes  
Enclosed: Yes  
Contiguous: Yes  
Permitted: Yes  
Wet space: No  
Addition: No  
Conversion: No

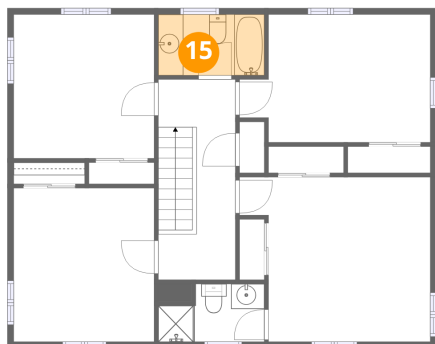
## 14 Floor 2 - Bath



Dimensions: 8'6" x 4'7"  
Area: 34 sq. ft  
Counted as living area: Yes

Heated: Yes  
Finished: Yes  
Enclosed: Yes  
Contiguous: Yes  
Permitted: Yes  
Wet space: Yes  
Addition: No  
Conversion: No

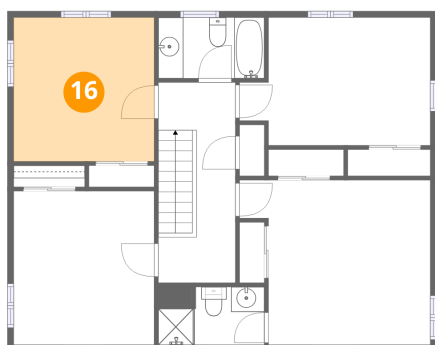
**15** Floor 2 - Bath



Dimensions: 8'6" x 4'10"  
Area: 41 sq. ft  
Counted as living area: Yes

Heated: Yes  
Finished: Yes  
Enclosed: Yes  
Contiguous: Yes  
Permitted: Yes  
Wet space: Yes  
Addition: No  
Conversion: No

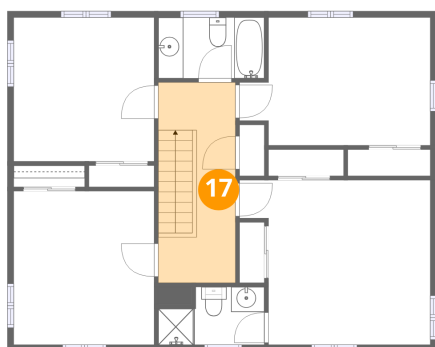
**16** Floor 2 - Bedroom



Dimensions: 11'3" x 11'6"  
Area: 129 sq. ft  
Counted as living area: Yes

Heated: Yes  
Finished: Yes  
Enclosed: Yes  
Contiguous: Yes  
Permitted: Yes  
Wet space: No  
Addition: No  
Conversion: No

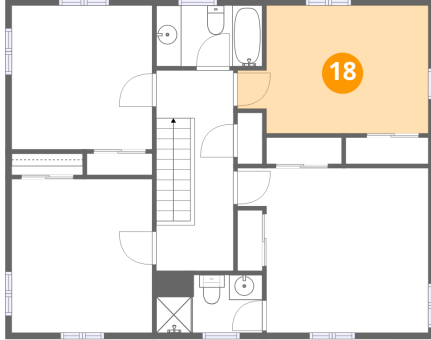
**17** Floor 2 - Hall



Dimensions: 6'2" x 15'11"  
Area: 98 sq. ft  
Counted as living area: Yes

Heated: Yes  
Finished: Yes  
Enclosed: Yes  
Contiguous: Yes  
Permitted: Yes  
Wet space: No  
Addition: No  
Conversion: No

**18** Floor 2 - Bedroom



Dimensions: 15'2" x 10'2"  
Area: 139 sq. ft  
Counted as living area: Yes

Heated: Yes  
Finished: Yes  
Enclosed: Yes  
Contiguous: Yes  
Permitted: Yes  
Wet space: No  
Addition: No  
Conversion: No