

Home report

9701 Stemwell Court, Rockwood, North Chesterfield,  
Chesterfield County, Virginia, United States, 23236




Total Area: 2751 sq. ft

Floor 1: 1966 sq. ft, Floor 2: 785 sq. ft

Excluded: Garage 450 sq. ft, Utility 34 sq. ft, Screened porch 65 sq. ft, Deck 519 sq. ft, Fireplace 13 sq. ft, Open to below 363 sq. ft, Walls: 227 sq. ft

Property summary

 2 Floors

 4 Bedrooms

 2 Bathrooms

Home report

**9701 Stemwell Court, Rockwood, North Chesterfield,  
Chesterfield County, Virginia, United States, 23236**



**1**  
Half baths



**1**  
Garages

Home report

9701 Stemwell Court, Rockwood, North Chesterfield,  
Chesterfield County, Virginia, United States, 23236



Room dimensions

Floor 1 Total:1966sqft Excluded: 1081sqft

#		Max Dimensions	sqft	Included
1	Primary Bedroom	17'3" x 19'1"	281 sq. ft	Yes
2	Breakfast Nook	8'0" x 8'10"	64 sq. ft	Yes
3	Hall	3'6" x 6'9"	24 sq. ft	Yes
4	Deck	26'5" x 24'6"	519 sq. ft	No
5	Utility	6'4" x 6'5"	34 sq. ft	No
6	WC	4'10" x 5'1"	25 sq. ft	Yes
7	Kitchen	17'4" x 11'4"	175 sq. ft	Yes
8	Foyer	9'10" x 15'0"	122 sq. ft	Yes
9	Sitting Room	14'2" x 10'2"	137 sq. ft	Yes
10	Primary Bath	9'1" x 12'2"	103 sq. ft	Yes
11	Screened Porch	8'7" x 9'0"	65 sq. ft	No

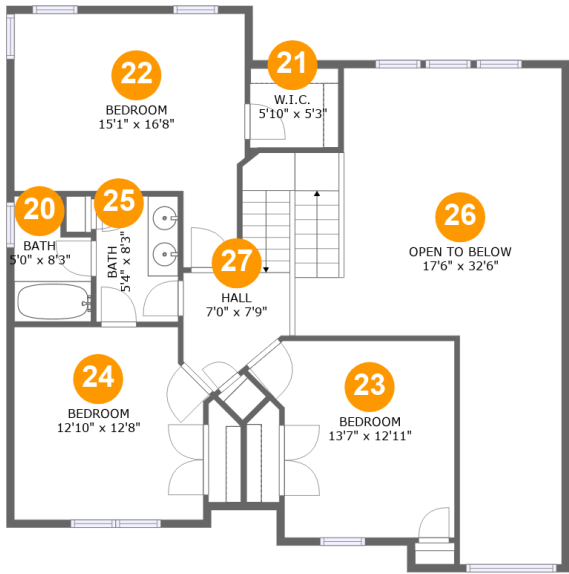
## Home report

**9701 Stemwell Court, Rockwood, North Chesterfield,  
Chesterfield County, Virginia, United States, 23236**

#		Max Dimensions	sqft	Included
12	Dining Area	11'5" x 13'3"	151 sq. ft	Yes
13	Garage	21'3" x 21'8"	449 sq. ft	No
14	W.I.C.	7'1" x 5'6"	36 sq. ft	Yes
15	W.I.C.	5'8" x 6'9"	34 sq. ft	Yes
16	Family Room	15'1" x 21'1"	303 sq. ft	Yes
17	Bath	5'8" x 5'1"	29 sq. ft	Yes
18	Living Room	23'11" x 17'6"	346 sq. ft	Yes
19	Laundry	6'10" x 6'5"	44 sq. ft	Yes

Home report

9701 Stemwell Court, Rockwood, North Chesterfield,  
Chesterfield County, Virginia, United States, 23236



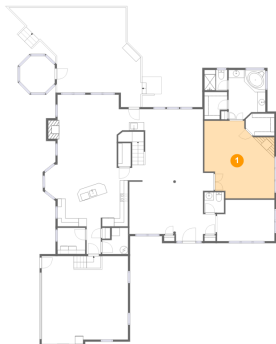
Room dimensions

Floor 2 Total:785sqft    Excluded: 363sqft

#		Max Dimensions	sqft	Included
20	Bath	5'0" x 8'3"	36 sq. ft	Yes
21	W.I.C.	5'10" x 5'3"	30 sq. ft	Yes
22	Bedroom	15'1" x 16'8"	192 sq. ft	Yes
23	Bedroom	13'7" x 12'11"	149 sq. ft	Yes
24	Bedroom	12'10" x 12'8"	151 sq. ft	Yes
25	Bath	5'4" x 8'3"	44 sq. ft	Yes
26	Open To Below	17'6" x 32'6"	363 sq. ft	No
27	Hall	7'0" x 7'9"	97 sq. ft	Yes

9701 Stemwell Court, Rockwood, North Chesterfield,  
Chesterfield County, Virginia, United States, 23236

1 Floor 1 - Primary Bedroom



Max Dimensions: 17'3" x 19'1"  
Calculated Area: 281 sq. ft  
Included: Yes

Heated: Yes  
Finished: Yes  
Enclosed: Yes  
Contiguous: Yes  
Permitted: Yes  
Wet space: No  
Addition: No  
Conversion: No

2 Floor 1 - Breakfast Nook



Max Dimensions: 8'0" x 8'10"  
Calculated Area: 64 sq. ft  
Included: Yes

Heated: Yes  
Finished: Yes  
Enclosed: Yes  
Contiguous: Yes  
Permitted: Yes  
Wet space: No  
Addition: No  
Conversion: No

9701 Stemwell Court, Rockwood, North Chesterfield,  
Chesterfield County, Virginia, United States, 23236

3 Floor 1 - Hall



Max Dimensions: 3'6" x 6'9"  
Calculated Area: 24 sq. ft  
Included: Yes

Heated: Yes  
Finished: Yes  
Enclosed: Yes  
Contiguous: Yes  
Permitted: Yes  
Wet space: No  
Addition: No  
Conversion: No

4 Floor 1 - Deck



Max Dimensions: 26'5" x 24'6"  
Calculated Area: 519 sq. ft  
Included: No

Heated: No  
Finished: Yes  
Enclosed: No  
Contiguous: Yes  
Permitted: Yes  
Wet space: No  
Addition: No  
Conversion: No

5 Floor 1 - Utility



Max Dimensions: 6'4" x 6'5"  
Calculated Area: 34 sq. ft  
Included: No

Heated: Yes  
Finished: No  
Enclosed: Yes  
Contiguous: Yes  
Permitted: Yes  
Wet space: No  
Addition: No  
Conversion: No

9701 Stemwell Court, Rockwood, North Chesterfield,  
Chesterfield County, Virginia, United States, 23236

6 Floor 1 - WC



Max Dimensions: 4'10" x 5'1"  
Calculated Area: 25 sq. ft  
Included: Yes

Heated: Yes  
Finished: Yes  
Enclosed: Yes  
Contiguous: Yes  
Permitted: Yes  
Wet space: Yes  
Addition: No  
Conversion: No

7 Floor 1 - Kitchen



Max Dimensions: 17'4" x 11'4"  
Calculated Area: 175 sq. ft  
Included: Yes

Heated: Yes  
Finished: Yes  
Enclosed: Yes  
Contiguous: Yes  
Permitted: Yes  
Wet space: No  
Addition: No  
Conversion: No

8 Floor 1 - Foyer



Max Dimensions: 9'10" x 15'0"  
Calculated Area: 122 sq. ft  
Included: Yes

Heated: Yes  
Finished: Yes  
Enclosed: Yes  
Contiguous: Yes  
Permitted: Yes  
Wet space: No  
Addition: No  
Conversion: No



9701 Stemwell Court, Rockwood, North Chesterfield,  
Chesterfield County, Virginia, United States, 23236

9 Floor 1 - Sitting Room



Max Dimensions: 14'2" x 10'2"  
Calculated Area: 137 sq. ft  
Included: Yes

Heated: Yes  
Finished: Yes  
Enclosed: Yes  
Contiguous: Yes  
Permitted: Yes  
Wet space: No  
Addition: No  
Conversion: No

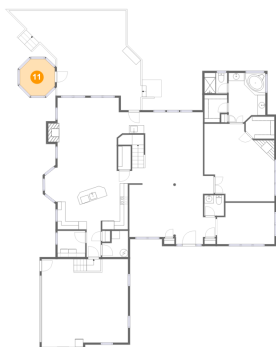
10 Floor 1 - Primary Bath



Max Dimensions: 9'1" x 12'2"  
Calculated Area: 103 sq. ft  
Included: Yes

Heated: Yes  
Finished: Yes  
Enclosed: Yes  
Contiguous: Yes  
Permitted: Yes  
Wet space: Yes  
Addition: No  
Conversion: No

11 Floor 1 - Screened Porch



Max Dimensions: 8'7" x 9'0"  
Calculated Area: 65 sq. ft  
Included: No

Heated: No  
Finished: Yes  
Enclosed: No  
Contiguous: Yes  
Permitted: Yes  
Wet space: No  
Addition: No  
Conversion: No

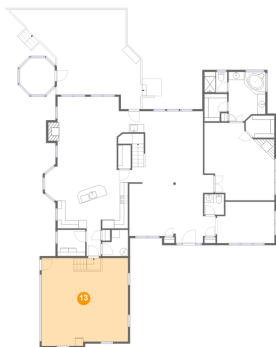
12 Floor 1 - Dining Area



Max Dimensions: 11'5" x 13'3"  
Calculated Area: 151 sq. ft  
Included: Yes

Heated: Yes  
Finished: Yes  
Enclosed: Yes  
Contiguous: Yes  
Permitted: Yes  
Wet space: No  
Addition: No  
Conversion: No

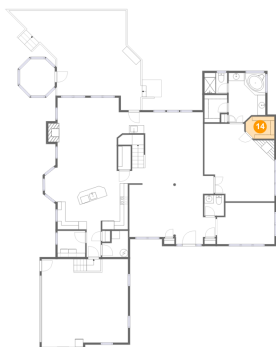
13 Floor 1 - Garage



Max Dimensions: 21'3" x 21'8"  
Calculated Area: 449 sq. ft  
Included: No

Heated: No  
Finished: No  
Enclosed: Yes  
Contiguous: Yes  
Permitted: Yes  
Wet space: No  
Addition: No  
Conversion: No

14 Floor 1 - W.I.C.



Max Dimensions: 7'1" x 5'6"  
Calculated Area: 36 sq. ft  
Included: Yes

Heated: Yes  
Finished: Yes  
Enclosed: Yes  
Contiguous: Yes  
Permitted: Yes  
Wet space: No  
Addition: No  
Conversion: No

9701 Stemwell Court, Rockwood, North Chesterfield,  
Chesterfield County, Virginia, United States, 23236

### 15 Floor 1 - W.I.C.

---

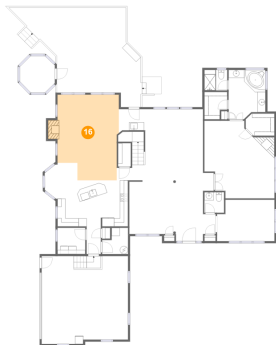


Max Dimensions: 5'8" x 6'9"  
Calculated Area: 34 sq. ft  
Included: Yes

Heated: Yes  
Finished: Yes  
Enclosed: Yes  
Contiguous: Yes  
Permitted: Yes  
Wet space: No  
Addition: No  
Conversion: No

### 16 Floor 1 - Family Room

---

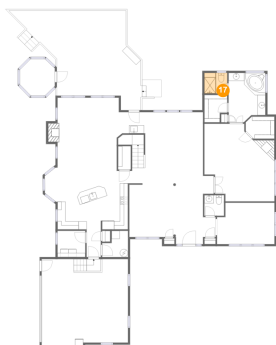


Max Dimensions: 15'1" x 21'1"  
Calculated Area: 303 sq. ft  
Included: Yes

Heated: Yes  
Finished: Yes  
Enclosed: Yes  
Contiguous: Yes  
Permitted: Yes  
Wet space: No  
Addition: No  
Conversion: No

### 17 Floor 1 - Bath

---



Max Dimensions: 5'8" x 5'1"  
Calculated Area: 29 sq. ft  
Included: Yes

Heated: Yes  
Finished: Yes  
Enclosed: Yes  
Contiguous: Yes  
Permitted: Yes  
Wet space: Yes  
Addition: No  
Conversion: No

9701 Stemwell Court, Rockwood, North Chesterfield,  
Chesterfield County, Virginia, United States, 23236

18 Floor 1 - Living Room



Max Dimensions: 23'11" x 17'6"  
Calculated Area: 346 sq. ft  
Included: Yes

Heated: Yes  
Finished: Yes  
Enclosed: Yes  
Contiguous: Yes  
Permitted: Yes  
Wet space: No  
Addition: No  
Conversion: No

19 Floor 1 - Laundry



Max Dimensions: 6'10" x 6'5"  
Calculated Area: 44 sq. ft  
Included: Yes

Heated: Yes  
Finished: Yes  
Enclosed: Yes  
Contiguous: Yes  
Permitted: Yes  
Wet space: No  
Addition: No  
Conversion: No

20 Floor 2 - Bath



Max Dimensions: 5'0" x 8'3"  
Calculated Area: 36 sq. ft  
Included: Yes

Heated: Yes  
Finished: Yes  
Enclosed: Yes  
Contiguous: Yes  
Permitted: Yes  
Wet space: Yes  
Addition: No  
Conversion: No

9701 Stemwell Court, Rockwood, North Chesterfield,  
Chesterfield County, Virginia, United States, 23236

21 Floor 2 - W.I.C.



Max Dimensions: 5'10" x 5'3"  
Calculated Area: 30 sq. ft  
Included: Yes

Heated: Yes  
Finished: Yes  
Enclosed: Yes  
Contiguous: Yes  
Permitted: Yes  
Wet space: No  
Addition: No  
Conversion: No

22 Floor 2 - Bedroom



Max Dimensions: 15'1" x 16'8"  
Calculated Area: 192 sq. ft  
Included: Yes

Heated: Yes  
Finished: Yes  
Enclosed: Yes  
Contiguous: Yes  
Permitted: Yes  
Wet space: No  
Addition: No  
Conversion: No

23 Floor 2 - Bedroom



Max Dimensions: 13'7" x 12'11"  
Calculated Area: 149 sq. ft  
Included: Yes

Heated: Yes  
Finished: Yes  
Enclosed: Yes  
Contiguous: Yes  
Permitted: Yes  
Wet space: No  
Addition: No  
Conversion: No

9701 Stemwell Court, Rockwood, North Chesterfield,  
Chesterfield County, Virginia, United States, 23236

24 Floor 2 - Bedroom



Max Dimensions: 12'10" x 12'8"  
Calculated Area: 151 sq. ft  
Included: Yes

Heated: Yes  
Finished: Yes  
Enclosed: Yes  
Contiguous: Yes  
Permitted: Yes  
Wet space: No  
Addition: No  
Conversion: No

25 Floor 2 - Bath



Max Dimensions: 5'4" x 8'3"  
Calculated Area: 44 sq. ft  
Included: Yes

Heated: Yes  
Finished: Yes  
Enclosed: Yes  
Contiguous: Yes  
Permitted: Yes  
Wet space: Yes  
Addition: No  
Conversion: No

26 Floor 2 - Open To Below



Max Dimensions: 17'6" x 32'6"  
Calculated Area: 363 sq. ft  
Included: No

Heated: No  
Finished: No  
Enclosed: No  
Contiguous: Yes  
Permitted: No  
Wet space: No  
Addition: No  
Conversion: No

9701 Stemwell Court, Rockwood, North Chesterfield,  
Chesterfield County, Virginia, United States, 23236

27 Floor 2 - Hall



Max Dimensions: 7'0" x 7'9"  
Calculated Area: 97 sq. ft  
Included: Yes

Heated: Yes  
Finished: Yes  
Enclosed: Yes  
Contiguous: Yes  
Permitted: Yes  
Wet space: No  
Addition: No  
Conversion: No