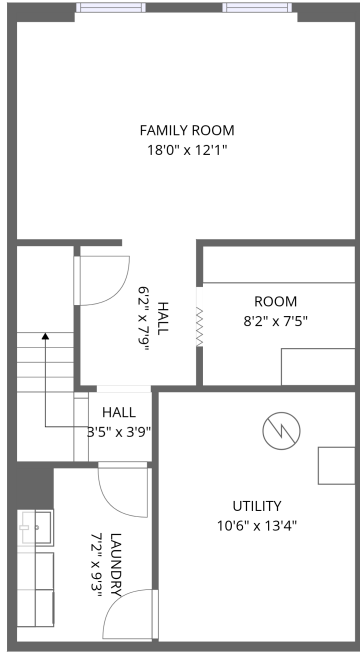
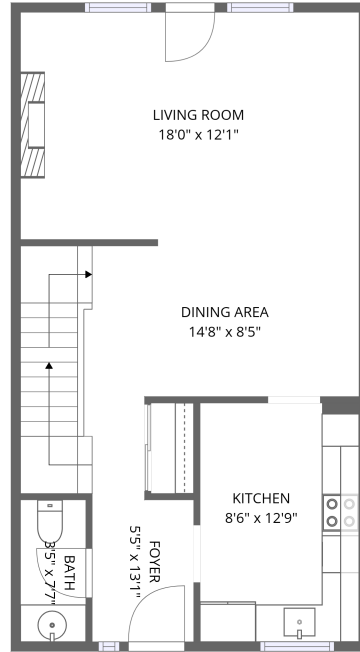


## Home data report

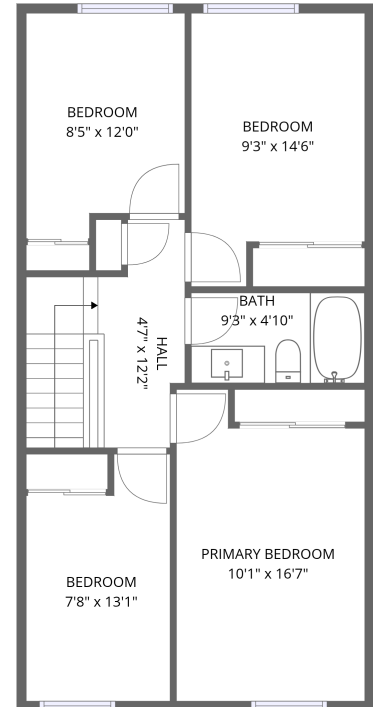
2049 Stonehenge Crescent, Pineview, Gloucester, Ontario,  
Canada, K1B 4N7



Basement



1st floor



2nd floor

**Total Area: 1734 sq. ft**

Basement: 466 sq. ft, 1st Floor: 606 sq. ft, 2nd Floor: 662 sq. ft

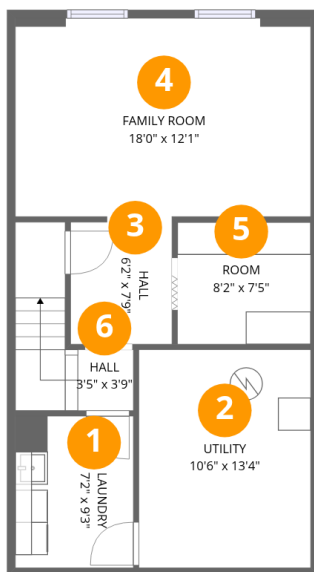
Excluded: Utility 140 sq. ft, Walls: 0 sq. ft

## Property summary



## Home data report

2049 Stonehenge Crescent, Pineview, Gloucester, Ontario, Canada, K1B 4N7



## Room dimensions

Floor 1 Below grade

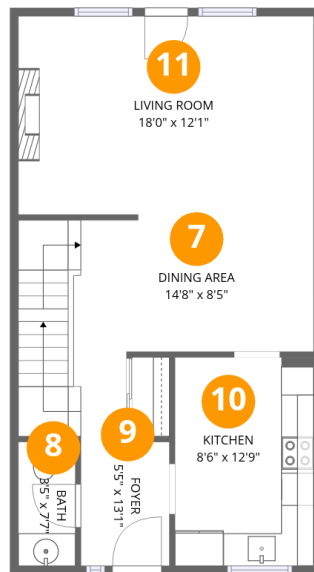
Total:466sqft

Excluded: 140sqft

#		Dimensions	sqft	Counted as living area
1	Laundry	7'2" x 9'3"	67 sq. ft	Yes
2	Utility	10'6" x 13'4"	140 sq. ft	No
3	Hall	6'2" x 7'9"	48 sq. ft	Yes
4	Family Room	18'0" x 12'1"	217 sq. ft	Yes
5	Room	8'2" x 7'5"	61 sq. ft	Yes
6	Hall	3'5" x 3'9"	13 sq. ft	Yes

## Home data report

2049 Stonehenge Crescent, Pineview, Gloucester, Ontario, Canada, K1B 4N7



## Room dimensions

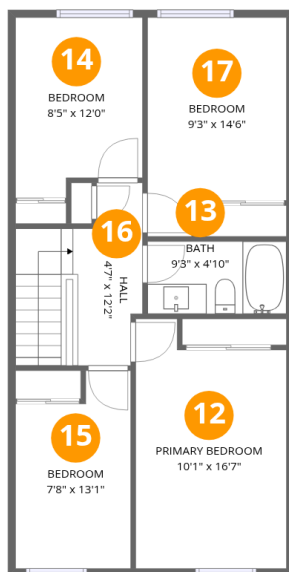
Floor 2

Total:606sqft

Excluded: 0sqft

#		Dimensions	sqft	Counted as living area
7	Dining Area	14'8" x 8'5"	123 sq. ft	Yes
8	Bath	3'5" x 7'7"	26 sq. ft	Yes
9	Foyer	5'5" x 13'1"	71 sq. ft	Yes
10	Kitchen	8'6" x 12'9"	108 sq. ft	Yes
11	Living Room	18'0" x 12'1"	217 sq. ft	Yes

2049 Stonehenge Crescent, Pineview, Gloucester, Ontario, Canada, K1B 4N7



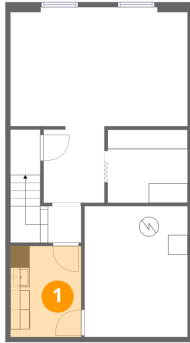
### Room dimensions

Floor 3

Total:662sqft Excluded: 0sqft

#		Dimensions	sqft	Counted as living area
12	Primary Bedroom	10'1" x 16'7"	167 sq. ft	Yes
13	Bath	9'3" x 4'10"	45 sq. ft	Yes
14	Bedroom	8'5" x 12'0"	101 sq. ft	Yes
15	Bedroom	7'8" x 13'1"	100 sq. ft	Yes
16	Hall	4'7" x 12'2"	56 sq. ft	Yes
17	Bedroom	9'3" x 14'6"	134 sq. ft	Yes

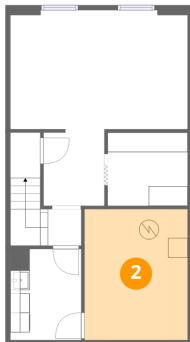
## 1 Floor 1 - Laundry



Dimensions: 7'2" x 9'3"  
Area: 67 sq. ft  
Counted as living area: Yes

Heated: Yes  
Finished: Yes  
Enclosed: Yes  
Contiguous: Yes  
Permitted: Yes  
Wet space: No  
Addition: No  
Conversion: No

## 2 Floor 1 - Utility



Dimensions: 10'6" x 13'4"  
Area: 140 sq. ft  
Counted as living area: No

Heated: Yes  
Finished: No  
Enclosed: Yes  
Contiguous: Yes  
Permitted: Yes  
Wet space: No  
Addition: No  
Conversion: No

2049 Stonehenge Crescent, Pineview, Gloucester, Ontario,  
Canada, K1B 4N7

**3** Floor 1 - Hall

---

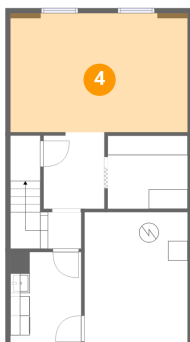


Dimensions: 6'2" x 7'9"  
Area: 48 sq. ft  
Counted as living area: Yes

Heated: Yes  
Finished: Yes  
Enclosed: Yes  
Contiguous: Yes  
Permitted: Yes  
Wet space: No  
Addition: No  
Conversion: No

**4** Floor 1 - Family Room

---

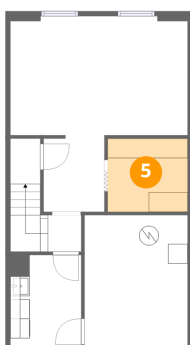


Dimensions: 18'0" x 12'1"  
Area: 217 sq. ft  
Counted as living area: Yes

Heated: Yes  
Finished: Yes  
Enclosed: Yes  
Contiguous: Yes  
Permitted: Yes  
Wet space: No  
Addition: No  
Conversion: No

**5** Floor 1 - Room

---



Dimensions: 8'2" x 7'5"  
Area: 61 sq. ft  
Counted as living area: Yes

Heated: Yes  
Finished: Yes  
Enclosed: Yes  
Contiguous: Yes  
Permitted: Yes  
Wet space: No  
Addition: No  
Conversion: No

2049 Stonehenge Crescent, Pineview, Gloucester, Ontario,  
Canada, K1B 4N7

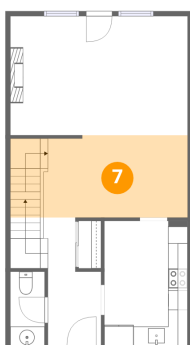
**6** Floor 1 - Hall



Dimensions: 3'5" x 3'9"  
Area: 13 sq. ft  
Counted as living area: Yes

Heated: Yes  
Finished: Yes  
Enclosed: Yes  
Contiguous: Yes  
Permitted: Yes  
Wet space: No  
Addition: No  
Conversion: No

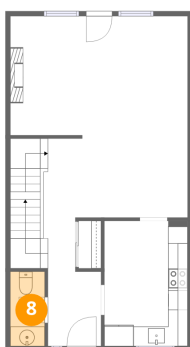
**7** Floor 2 - Dining Area



Dimensions: 14'8" x 8'5"  
Area: 123 sq. ft  
Counted as living area: Yes

Heated: Yes  
Finished: Yes  
Enclosed: Yes  
Contiguous: Yes  
Permitted: Yes  
Wet space: No  
Addition: No  
Conversion: No

**8** Floor 2 - Bath

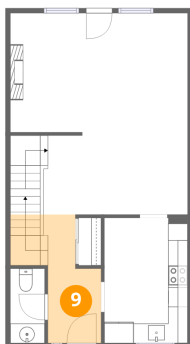


Dimensions: 3'5" x 7'7"  
Area: 26 sq. ft  
Counted as living area: Yes

Heated: Yes  
Finished: Yes  
Enclosed: Yes  
Contiguous: Yes  
Permitted: Yes  
Wet space: Yes  
Addition: No  
Conversion: No

2049 Stonehenge Crescent, Pineview, Gloucester, Ontario,  
Canada, K1B 4N7

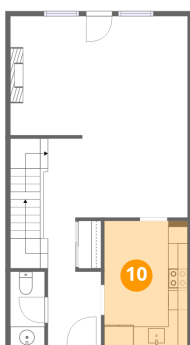
**9** Floor 2 - Foyer



Dimensions: 5'5" x 13'1"  
Area: 71 sq. ft  
Counted as living area: Yes

Heated: Yes  
Finished: Yes  
Enclosed: Yes  
Contiguous: Yes  
Permitted: Yes  
Wet space: No  
Addition: No  
Conversion: No

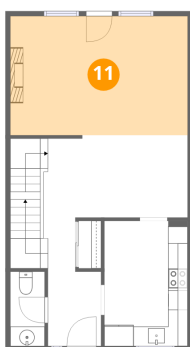
**10** Floor 2 - Kitchen



Dimensions: 8'6" x 12'9"  
Area: 108 sq. ft  
Counted as living area: Yes

Heated: Yes  
Finished: Yes  
Enclosed: Yes  
Contiguous: Yes  
Permitted: Yes  
Wet space: No  
Addition: No  
Conversion: No

**11** Floor 2 - Living Room



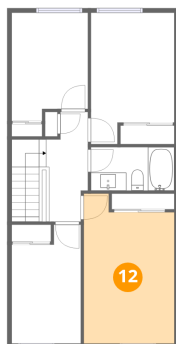
Dimensions: 18'0" x 12'1"  
Area: 217 sq. ft  
Counted as living area: Yes

Heated: Yes  
Finished: Yes  
Enclosed: Yes  
Contiguous: Yes  
Permitted: Yes  
Wet space: No  
Addition: No  
Conversion: No

2049 Stonehenge Crescent, Pineview, Gloucester, Ontario,  
Canada, K1B 4N7

**12** Floor 3 - Primary Bedroom

---

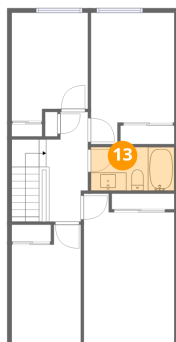


Dimensions: 10'1" x 16'7"  
Area: 167 sq. ft  
Counted as living area: Yes

Heated: Yes  
Finished: Yes  
Enclosed: Yes  
Contiguous: Yes  
Permitted: Yes  
Wet space: No  
Addition: No  
Conversion: No

**13** Floor 3 - Bath

---

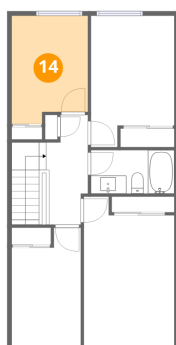


Dimensions: 9'3" x 4'10"  
Area: 45 sq. ft  
Counted as living area: Yes

Heated: Yes  
Finished: Yes  
Enclosed: Yes  
Contiguous: Yes  
Permitted: Yes  
Wet space: Yes  
Addition: No  
Conversion: No

**14** Floor 3 - Bedroom

---



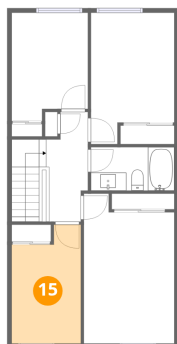
Dimensions: 8'5" x 12'0"  
Area: 101 sq. ft  
Counted as living area: Yes

Heated: Yes  
Finished: Yes  
Enclosed: Yes  
Contiguous: Yes  
Permitted: Yes  
Wet space: No  
Addition: No  
Conversion: No

2049 Stonehenge Crescent, Pineview, Gloucester, Ontario,  
Canada, K1B 4N7

**15** Floor 3 - Bedroom

---

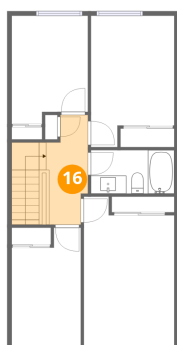


Dimensions: 7'8" x 13'1"  
Area: 100 sq. ft  
Counted as living area: Yes

Heated: Yes  
Finished: Yes  
Enclosed: Yes  
Contiguous: Yes  
Permitted: Yes  
Wet space: No  
Addition: No  
Conversion: No

**16** Floor 3 - Hall

---

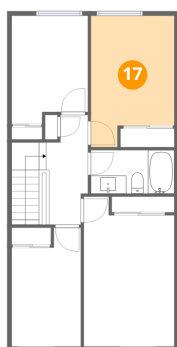


Dimensions: 4'7" x 12'2"  
Area: 56 sq. ft  
Counted as living area: Yes

Heated: Yes  
Finished: Yes  
Enclosed: Yes  
Contiguous: Yes  
Permitted: Yes  
Wet space: No  
Addition: No  
Conversion: No

**17** Floor 3 - Bedroom

---



Dimensions: 9'3" x 14'6"  
Area: 134 sq. ft  
Counted as living area: Yes

Heated: Yes  
Finished: Yes  
Enclosed: Yes  
Contiguous: Yes  
Permitted: Yes  
Wet space: No  
Addition: No  
Conversion: No