

Home data report

5610 Cortland Road, Roanoke, Roanoke County, Virginia, United States, 24019



**Total Area: 1544 sq. ft**

1st Floor: 1544 sq. ft

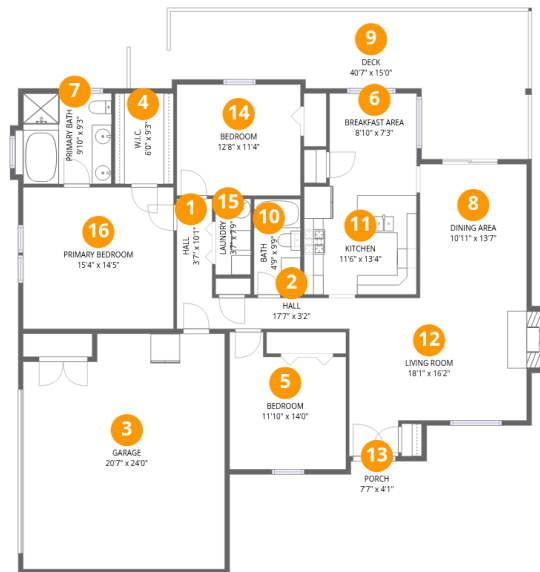
Excluded: Garage 472 sq. ft, Undefined 17 sq. ft, Porch 29 sq. ft, Deck 370 sq. ft, Fireplace 13 sq. ft, Walls: 119 sq. ft

## Property summary



## Home data report

5610 Cortland Road, Roanoke, Roanoke County, Virginia, United States, 24019



## Room dimensions

Floor 1

Total:1544sqft Excluded: 901sqft

#		Dimensions	sqft	Counted as living area
1	Hall	3'7" x 10'1"	36 sq. ft	Yes
2	Hall	17'7" x 3'2"	55 sq. ft	Yes
3	Garage	20'7" x 24'0"	494 sq. ft	No
4	W.I.C.	6'0" x 9'3"	55 sq. ft	Yes
5	Bedroom	11'10" x 14'0"	166 sq. ft	Yes
6	Breakfast Area	8'10" x 7'3"	64 sq. ft	Yes
7	Primary Bath	9'10" x 9'3"	91 sq. ft	Yes
8	Dining Area	10'11" x 13'7"	148 sq. ft	Yes
9	Deck	40'7" x 15'0"	609 sq. ft	No
10	Bath	4'9" x 9'9"	46 sq. ft	Yes
11	Kitchen	11'6" x 13'4"	153 sq. ft	Yes

Home data report

**5610 Cortland Road, Roanoke, Roanoke County, Virginia, United States, 24019**

#		Dimensions	sqft	Counted as living area
12	Living Room	18'1" x 16'2"	292 sq. ft	Yes
13	Porch	7'7" x 4'1"	31 sq. ft	No
14	Bedroom	12'8" x 11'4"	143 sq. ft	Yes
15	Laundry	3'7" x 7'9"	28 sq. ft	Yes
16	Primary Bedroom	15'4" x 14'5"	221 sq. ft	Yes

### 1 Floor 1 - Hall

---

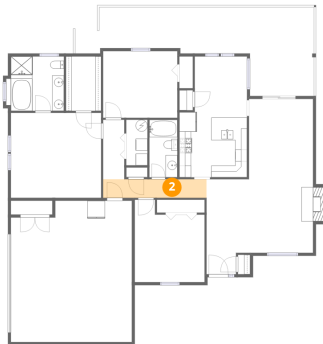


Dimensions: 3'7" x 10'1"  
Area: 36 sq. ft  
Counted as living area: Yes

Heated: Yes  
Finished: Yes  
Enclosed: Yes  
Contiguous: Yes  
Permitted: Yes  
Wet space: No  
Addition: No  
Conversion: No

### 2 Floor 1 - Hall

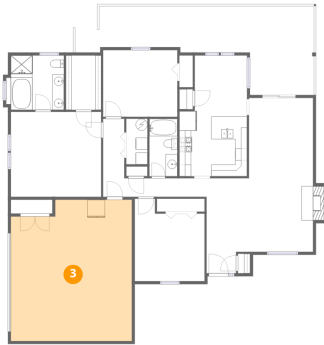
---



Dimensions: 17'7" x 3'2"  
Area: 55 sq. ft  
Counted as living area: Yes

Heated: Yes  
Finished: Yes  
Enclosed: Yes  
Contiguous: Yes  
Permitted: Yes  
Wet space: No  
Addition: No  
Conversion: No

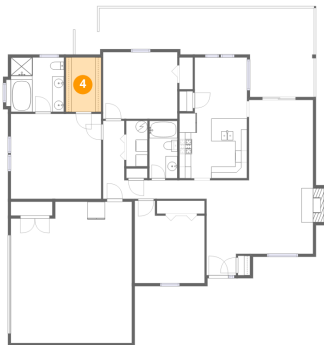
### 3 Floor 1 - Garage



Dimensions: 20'7" x 24'0"  
Area: 494 sq. ft  
Counted as living area: No

Heated: No  
Finished: No  
Enclosed: Yes  
Contiguous: Yes  
Permitted: Yes  
Wet space: No  
Addition: No  
Conversion: No

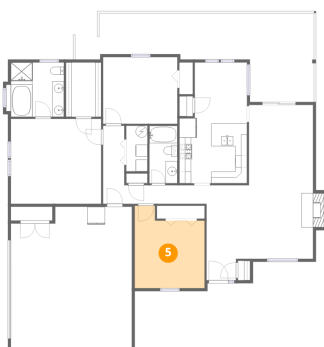
### 4 Floor 1 - W.I.C.



Dimensions: 6'0" x 9'3"  
Area: 55 sq. ft  
Counted as living area: Yes

Heated: Yes  
Finished: Yes  
Enclosed: Yes  
Contiguous: Yes  
Permitted: Yes  
Wet space: No  
Addition: No  
Conversion: No

### 5 Floor 1 - Bedroom



Dimensions: 11'10" x 14'0"  
Area: 166 sq. ft  
Counted as living area: Yes

Heated: Yes  
Finished: Yes  
Enclosed: Yes  
Contiguous: Yes  
Permitted: Yes  
Wet space: No  
Addition: No  
Conversion: No

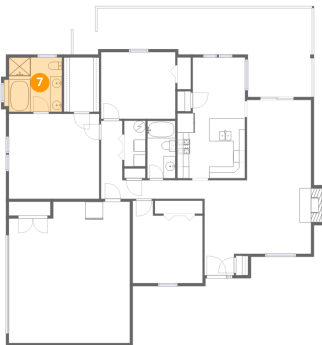
## 6 Floor 1 - Breakfast Area



Dimensions: 8'10" x 7'3"  
Area: 64 sq. ft  
Counted as living area: Yes

Heated: Yes  
Finished: Yes  
Enclosed: Yes  
Contiguous: Yes  
Permitted: Yes  
Wet space: No  
Addition: No  
Conversion: No

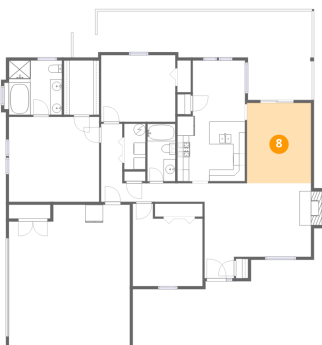
## 7 Floor 1 - Primary Bath



Dimensions: 9'10" x 9'3"  
Area: 91 sq. ft  
Counted as living area: Yes

Heated: Yes  
Finished: Yes  
Enclosed: Yes  
Contiguous: Yes  
Permitted: Yes  
Wet space: Yes  
Addition: No  
Conversion: No

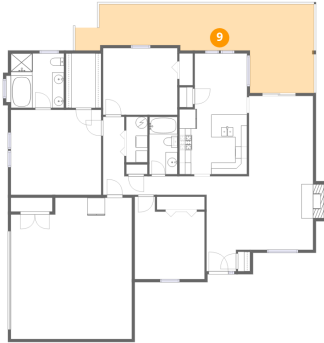
## 8 Floor 1 - Dining Area



Dimensions: 10'11" x 13'7"  
Area: 148 sq. ft  
Counted as living area: Yes

Heated: Yes  
Finished: Yes  
Enclosed: Yes  
Contiguous: Yes  
Permitted: Yes  
Wet space: No  
Addition: No  
Conversion: No

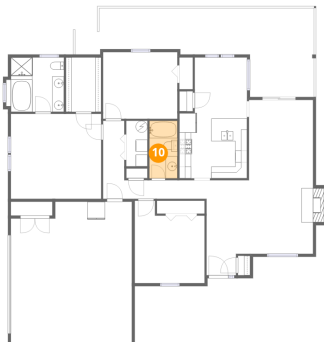
### 9 Floor 1 - Deck



Dimensions: 40'7" x 15'0"  
Area: 609 sq. ft  
Counted as living area: No

Heated: No  
Finished: No  
Enclosed: No  
Contiguous: Yes  
Permitted: Yes  
Wet space: No  
Addition: No  
Conversion: No

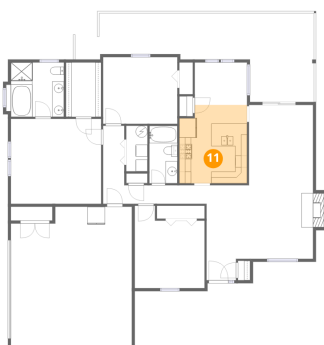
### 10 Floor 1 - Bath



Dimensions: 4'9" x 9'9"  
Area: 46 sq. ft  
Counted as living area: Yes

Heated: Yes  
Finished: Yes  
Enclosed: Yes  
Contiguous: Yes  
Permitted: Yes  
Wet space: Yes  
Addition: No  
Conversion: No

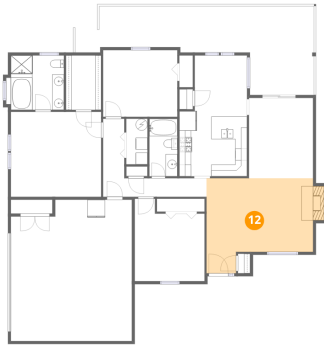
### 11 Floor 1 - Kitchen



Dimensions: 11'6" x 13'4"  
Area: 153 sq. ft  
Counted as living area: Yes

Heated: Yes  
Finished: Yes  
Enclosed: Yes  
Contiguous: Yes  
Permitted: Yes  
Wet space: No  
Addition: No  
Conversion: No

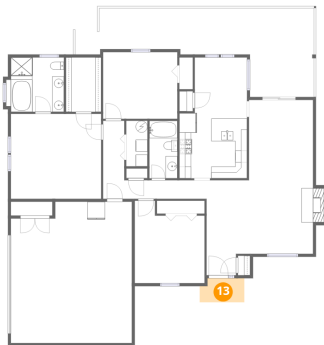
## 12 Floor 1 - Living Room



Dimensions: 18'1" x 16'2"  
Area: 292 sq. ft  
Counted as living area: Yes

Heated: Yes  
Finished: Yes  
Enclosed: Yes  
Contiguous: Yes  
Permitted: Yes  
Wet space: No  
Addition: No  
Conversion: No

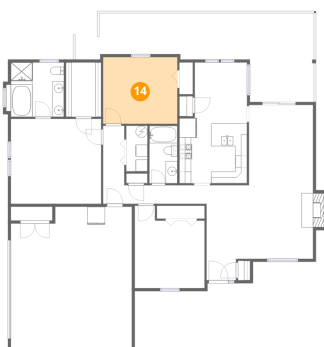
## 13 Floor 1 - Porch



Dimensions: 7'7" x 4'1"  
Area: 31 sq. ft  
Counted as living area: No

Heated: No  
Finished: No  
Enclosed: No  
Contiguous: Yes  
Permitted: Yes  
Wet space: No  
Addition: No  
Conversion: No

## 14 Floor 1 - Bedroom



Dimensions: 12'8" x 11'4"  
Area: 143 sq. ft  
Counted as living area: Yes

Heated: Yes  
Finished: Yes  
Enclosed: Yes  
Contiguous: Yes  
Permitted: Yes  
Wet space: No  
Addition: No  
Conversion: No

**15** Floor 1 - Laundry

---

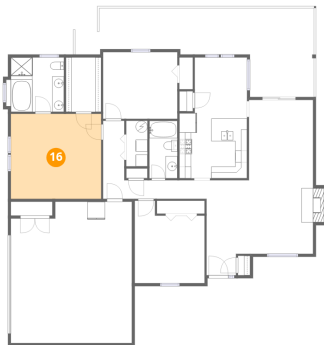


Dimensions: 3'7" x 7'9"  
Area: 28 sq. ft  
Counted as living area: Yes

Heated: Yes  
Finished: Yes  
Enclosed: Yes  
Contiguous: Yes  
Permitted: Yes  
Wet space: No  
Addition: No  
Conversion: No

**16** Floor 1 - Primary Bedroom

---



Dimensions: 15'4" x 14'5"  
Area: 221 sq. ft  
Counted as living area: Yes

Heated: Yes  
Finished: Yes  
Enclosed: Yes  
Contiguous: Yes  
Permitted: Yes  
Wet space: No  
Addition: No  
Conversion: No