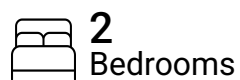


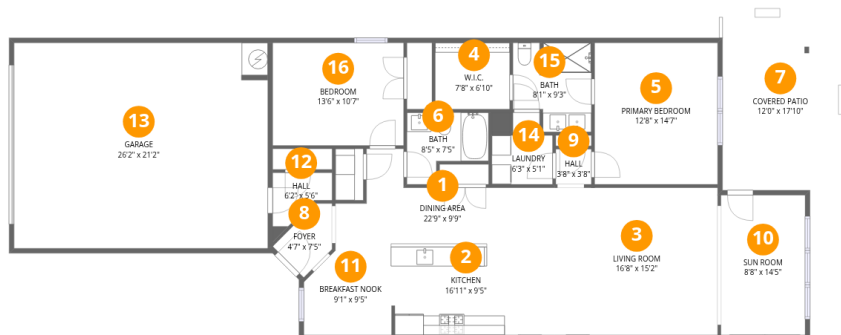
**Total Area: 1488 sq. ft**

1st Floor: 1488 sq. ft

Excluded: Garage 553 sq. ft, Covered patio 219 sq. ft, Walls: 124 sq. ft

## Property summary





## Room dimensions

Floor 1

Total: 1488sqft Excluded: 772sqft

#		Dimensions	sqft	Counted as living area
1	Dining Area	22'9" x 9'9"	223 sq. ft	Yes
2	Kitchen	16'11" x 9'5"	159 sq. ft	Yes
3	Living Room	16'8" x 15'2"	253 sq. ft	Yes
4	W.I.C.	7'8" x 6'10"	53 sq. ft	Yes
5	Primary Bedroom	12'8" x 14'7"	185 sq. ft	Yes
6	Bath	8'5" x 7'5"	62 sq. ft	Yes
7	Covered Patio	12'0" x 17'10"	213 sq. ft	No
8	Foyer	4'7" x 7'5"	34 sq. ft	Yes
9	Hall	3'8" x 3'8"	13 sq. ft	Yes
10	Sun Room	8'8" x 14'5"	125 sq. ft	Yes
11	Breakfast Nook	9'1" x 9'5"	85 sq. ft	Yes

Home data report

**532 Hereford Ln,Georgetown,TX,US**

#		Dimensions	sqft	Counted as living area
12	Hall	6'2" x 5'6"	34 sq. ft	Yes
13	Garage	26'2" x 21'2"	554 sq. ft	No
14	Laundry	6'3" x 5'1"	32 sq. ft	Yes
15	Bath	8'1" x 9'3"	75 sq. ft	Yes
16	Bedroom	13'6" x 10'7"	143 sq. ft	Yes

## 1 Floor 1 - Dining Area



Dimensions: 22'9" x 9'9"  
Area: 223 sq. ft  
Counted as living area: Yes

Heated: Yes  
Finished: Yes  
Enclosed: Yes  
Contiguous: Yes  
Permitted: Yes  
Wet space: No  
Addition: No  
Conversion: No

## 2 Floor 1 - Kitchen



Dimensions: 16'11" x 9'5"  
Area: 159 sq. ft  
Counted as living area: Yes

Heated: Yes  
Finished: Yes  
Enclosed: Yes  
Contiguous: Yes  
Permitted: Yes  
Wet space: No  
Addition: No  
Conversion: No

### 3 Floor 1 - Living Room



Dimensions: 16'8" x 15'2"  
Area: 253 sq. ft  
Counted as living area: Yes

Heated: Yes  
Finished: Yes  
Enclosed: Yes  
Contiguous: Yes  
Permitted: Yes  
Wet space: No  
Addition: No  
Conversion: No

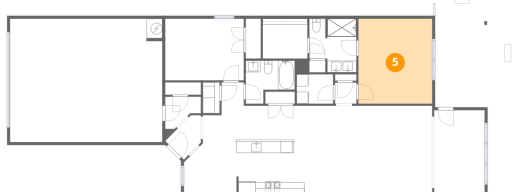
### 4 Floor 1 - W.I.C.



Dimensions: 7'8" x 6'10"  
Area: 53 sq. ft  
Counted as living area: Yes

Heated: Yes  
Finished: Yes  
Enclosed: Yes  
Contiguous: Yes  
Permitted: Yes  
Wet space: No  
Addition: No  
Conversion: No

### 5 Floor 1 - Primary Bedroom



Dimensions: 12'8" x 14'7"  
Area: 185 sq. ft  
Counted as living area: Yes

Heated: Yes  
Finished: Yes  
Enclosed: Yes  
Contiguous: Yes  
Permitted: Yes  
Wet space: No  
Addition: No  
Conversion: No

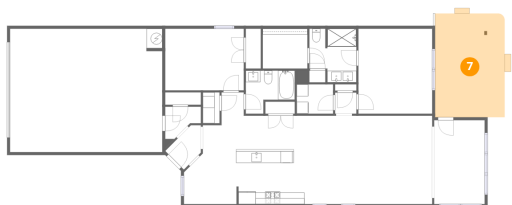
### 6 Floor 1 - Bath



Dimensions: 8'5" x 7'5"  
Area: 62 sq. ft  
Counted as living area: Yes

Heated: Yes  
Finished: Yes  
Enclosed: Yes  
Contiguous: Yes  
Permitted: Yes  
Wet space: Yes  
Addition: No  
Conversion: No

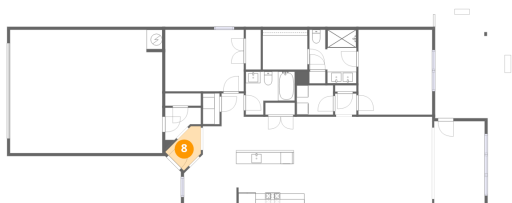
### 7 Floor 1 - Covered Patio



Dimensions: 12'0" x 17'10"  
Area: 213 sq. ft  
Counted as living area: No

Heated: No  
Finished: No  
Enclosed: No  
Contiguous: Yes  
Permitted: Yes  
Wet space: No  
Addition: No  
Conversion: No

### 8 Floor 1 - Foyer



Dimensions: 4'7" x 7'5"  
Area: 34 sq. ft  
Counted as living area: Yes

Heated: Yes  
Finished: Yes  
Enclosed: Yes  
Contiguous: Yes  
Permitted: Yes  
Wet space: No  
Addition: No  
Conversion: No

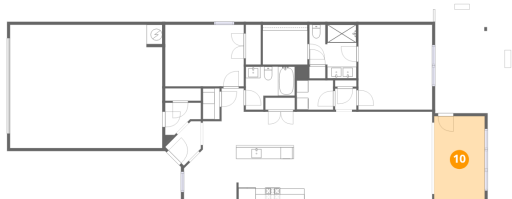
### 9 Floor 1 - Hall



Dimensions: 3'8" x 3'8"  
Area: 13 sq. ft  
Counted as living area: Yes

Heated: Yes  
Finished: Yes  
Enclosed: Yes  
Contiguous: Yes  
Permitted: Yes  
Wet space: No  
Addition: No  
Conversion: No

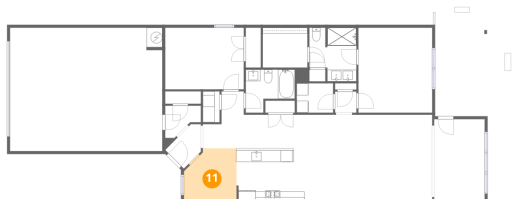
### 10 Floor 1 - Sun Room



Dimensions: 8'8" x 14'5"  
Area: 125 sq. ft  
Counted as living area: Yes

Heated: Yes  
Finished: Yes  
Enclosed: Yes  
Contiguous: Yes  
Permitted: Yes  
Wet space: No  
Addition: No  
Conversion: No

### 11 Floor 1 - Breakfast Nook



Dimensions: 9'1" x 9'5"  
Area: 85 sq. ft  
Counted as living area: Yes

Heated: Yes  
Finished: Yes  
Enclosed: Yes  
Contiguous: Yes  
Permitted: Yes  
Wet space: No  
Addition: No  
Conversion: No

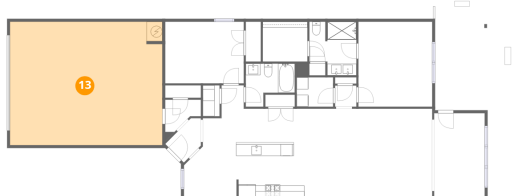
## 12 Floor 1 - Hall



Dimensions: 6'2" x 5'6"  
Area: 34 sq. ft  
Counted as living area: Yes

Heated: Yes  
Finished: Yes  
Enclosed: Yes  
Contiguous: Yes  
Permitted: Yes  
Wet space: No  
Addition: No  
Conversion: No

## 13 Floor 1 - Garage



Dimensions: 26'2" x 21'2"  
Area: 554 sq. ft  
Counted as living area: No

Heated: No  
Finished: No  
Enclosed: Yes  
Contiguous: Yes  
Permitted: Yes  
Wet space: No  
Addition: No  
Conversion: No

## 14 Floor 1 - Laundry

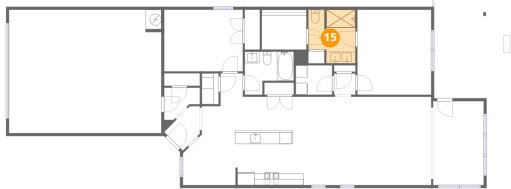


Dimensions: 6'3" x 5'1"  
Area: 32 sq. ft  
Counted as living area: Yes

Heated: Yes  
Finished: Yes  
Enclosed: Yes  
Contiguous: Yes  
Permitted: Yes  
Wet space: No  
Addition: No  
Conversion: No

**15** Floor 1 - Bath

---



Dimensions: 8'1" x 9'3"  
Area: 75 sq. ft  
Counted as living area: Yes

Heated: Yes  
Finished: Yes  
Enclosed: Yes  
Contiguous: Yes  
Permitted: Yes  
Wet space: Yes  
Addition: No  
Conversion: No

**16** Floor 1 - Bedroom

---



Dimensions: 13'6" x 10'7"  
Area: 143 sq. ft  
Counted as living area: Yes

Heated: Yes  
Finished: Yes  
Enclosed: Yes  
Contiguous: Yes  
Permitted: Yes  
Wet space: No  
Addition: No  
Conversion: No